



WINTER 2025

Liphook

COMMUNITY MAGAZINE

Inside This Edition:

Community Spirit Award

Carnival Pictures

Scouts Post

Voles in the Wey

A. Tubbs

All the volunteers who help put this magazine together each year wish all our readers a Happy Christmas and a Peaceful New Year.

Our Christmas

Let autumn leaves and chestnuts fall,
And touch of frost clad ancient roof,
When Halloween has fast approached,
Then we'll prepare for spook, and spoo.

But then, so soon, at Armistice,
When all around in silence stand,
We will remember those we've lost,
Defending freedom for our land.

So, when the final bugle fades,
Thoughts turn to other worldly things,
Of cards and presents, cakes and puds,
And all that Christmas, yearly, brings.

And, in the chill and still of night
The Bramshott bells will start to ring,
With family and friends, we'll come
To hear the Herald Angels sing.

So, on this crisp and chilly morn,
As congregation kneel to pray
For peace, in conflicts round the world,
We'll celebrate our Christmas Day.

Angela Glass

The Magazine is always keen to receive articles about local events, local places, items of historical interest, club news, stories or poems. Please email Fay Boyett: fay.lcm@outlook.com

A few guidelines:

- Please include in your article some pictures or photos.
- Please ask for permission from everyone shown in your photos if they are prominent in the picture.
- Please get permission from parents/guardians to include children in photos.
- Only include the first name of any child in a photo or body of your article.
- Please tell the Editor where you obtained your photos, e.g. you took them, the subject of the photo gave them to you or they were taken by a local newspaper etc.
- Please tell the Editor where you obtained any maps e.g. local library, local council, taken from an OS map.

GENERAL DATA PROTECTION REGULATION 2018

The Liphook Community Magazine has taken note of the regulations and can confirm that the information we hold has been fully assessed. We are aware of our obligations to comply and confirm that individuals' data will not be shared outside the Liphook Community Magazine's Committee. A full copy of our Privacy Policy is available on request.

Whilst every effort has been taken to ensure the information supplied for inclusion in the magazine is accurate, responsibility cannot be accepted for any omissions or inaccurate information.

The views expressed in this magazine are those of the contributors and not necessarily those of the Magazine.

Copies of this magazine can be viewed on the Liphook website as well as being delivered to your door by hand in the usual way.

www.liphook.uk/magazine

The Liphook Community Magazine

Exists to help maintain, encourage and initiate aspects of community life in which individuality, creativeness and mutual fellowship can flourish.

It is produced and distributed by volunteers, free, to every household in the Parish of Bramshott and Liphook. It is financed by advertising and donations from individuals and organisations.

The circulation is 4,500 copies per issue

Contents

BLACS Framed Art Award by Andy Tubbs	OFC
Our Christmas	IFC
Margaret Wilson Community Spirit Award / Village Laundry	1
Liphook Arts & Crafts Society (BLACS) Exhibition	2
Haslemere Camera Club	3
Mustangs at the Deers Hut / Millennium Centre	5
Girl Guides / Liphook Day Centre / Scouts Christmas Post	6
Scouts / Heritage Centre	7
Joy in Beauty / Highfield & Brookham Schools	9
National Trust / Liphook u3a	10/11
Countryside Companions / Autumn Edition Quiz Answers	13
Christmas Services / The Churches of Liphook / Church Café	14/15
Music and Beer Festival / Voluntary Care	17
Liphook in Bloom	19
Liphook Infant and Junior Schools	20/21
Church & Village Life / Love to Sing / Liphook Village Christmas Market	23
Liphook Carnival	24/25
Horticultural Society Autumn Show	27
Acupuncture South Downs / Magazine Writer Opportunity	29
The Stable Boxing Club / Recreation Ground Visit	31
The Car Network / Mast Year 2025	32/33
Update from East Hants District Council	33
Planet Dance / Churcher's Colleges	35
Voles in the River Wey / Green Oak Carpentry	37
Update from Bramshott and Liphook Parish Council / South Downs Park	38
Stay Warm / Future Energy Landscapes Workshop	39
Clubs and Organisations	40/IBC
Horticultural Society Chestnut Cup winner	IBC
Milky Way by Haslemere Camera Club	IBC

Next Copy Date: Friday 23rd January 2026

Advertisement Rates (Colour)

Cost *each* per 3-monthly issue - four or more insertions*

Eighth page - £40 Quarter page - £80 Half page - £160

** If less than four insertions are booked, the above charges increase by £5 per eighth-page to cover higher set-up costs.*

Advertisements Enquiries

Treasurer - John Anthistle

Tel.: 723676 or Email: mag@liphook.myzen.co.uk

Magazine Committee

CHAIRMAN - Roger Miller - Email: liphookmagazine@gmail.com

EDITOR - Fay Boyett - Email: fay.lcm@outlook.com

SECRETARY - Jackie Kelsey - Email: liphookmagazine@gmail.com

TREASURER - John Anthistle - Tel.: 723676

DISTRIBUTION - Sue Knight - Tel.: 723502

EDITORIAL - Paul Robinson

WRITERS - Paul Robinson, Gabrielle Pike, Simon Catford
Jenny Woodsford, Natalie Cocker and our two Junior Writers.

ALL PHOTOGRAPHS AND PICTURES WITHIN THE MAGAZINE BELONG TO THE AUTHOR UNLESS OTHERWISE STATED.

Outside Front Cover: BLACKS Exhibition Visitors Award for Framed Art went to Andy Tubbs for his painting 'A cold day in Lincoln'.

Margaret Wilson Community Spirit Award 2025

By Jackie Kelsey.

This is the third year that we have run this award, and it is funded by a legacy received from Margaret Wilson our past President and Editor. This award is awarded annually to the person or group of people that have in the past year contributed to village life and helped an individual or group of people.

In June, the award was advertised in the Magazine, Liphook Talkback and Liphook Community Board. The winners receive a shield and a certificate. The shield will be displayed in the Liphook in Bloom cabinet in the foyer of the Millennium Centre.

Simon Catford chaired a panel meeting with three new panel members to consider this year's nominations. Simon is now stepping down from this role and the Magazine committee would like to take this opportunity to thank Simon for his excellent work.

We are delighted to announce that this year's award goes to Bryan Jackson:



Award being presented to Bryan by Chairman Roger Miller.

For more than forty years, Bryan Jackson has been involved with the Scouting movement in Liphook. During this time, he has assisted huge numbers of young people from the age of six to eighteen to realise their full potential through a range of adventurous activities, all under the espouses of the Scouting movement. He has run endless troop meetings at the Scout hut and led expeditions in the UK and

abroad which have included two international Jamborees in America and South Korea. A keen kayaker, he has helped train Beavers, Cub Scouts, Explorers and their leaders in the safe and enjoyable pursuit of this sport and continues to train on Shillinglee Lakes.

For well over a decade Bryan has also acted as Group Scout Leader with all the attendant responsibilities this entails, requiring as it does close liaison between the local Scouts and the Headquarters at Gilwell to ensure a safe, effective and well-run organisation. He is also a keen supporter of the MAD theatre company and has assisted greatly in staging the Liphook Gangshow.

The opportunities for young people to extend themselves and find new life skills, learn and become confident and able communicators cannot be underestimated and countless parents over the years have thanked him for all his support. The demands on his time and energy over the years have been considerable and he has discharged his duties with enthusiasm and drive.

The time is now however for him to hand over to a replacement so that he can enjoy some rest and focus on other things. The panel believes that Bryan is fully deserving of this award and marks the end of his extensive service to the community.

The Community Magazine Chairman, Roger Miller, presented Bryan with the Margaret Wilson Community Spirit Award 2025 and congratulated him on receiving this award. Bryan was delighted to receive the award and thanked everyone that had nominated him. He added that he would not be retiring completely and would continue to be involved in the Scout Group.



Bryan with his shield.

Community Laundry at Risk of Closure

Unless a new team of volunteers can be found the Community Support Laundry of Liphook will have to close.

The current team of eight volunteers have an average age of almost 80 years old. They cannot continue indefinitely and are earnestly seeking new volunteers to take over the running of this small but successful charity. Unless a new Team is found it will close at the end of the current financial year (5th April 2026).

It is with great reluctance that this decision has been made. This has been a much-valued service as the following messages of thanks from clients and their families show:

- Thank you for dealing with my mother's laundry. I don't know how we could manage without you, with me being so far away.
- You made such a difference in supporting our dad and enabling him to remain at home as long as he did.
- Thank you for dealing with my washing after my operation. I don't know what I'd have done without you.
- It's lovely to have my washing so neatly washed and ironed. Thank you so much.

There is a paid laundry operator who does most of the actual washing, drying and ironing two mornings a week. Washing is

brought to the laundry room and then collected by clients or their carers. Volunteers collect and deliver laundry from and to clients if this is required. This takes an hour or so twice a week. A volunteer oversees the Laundry one morning a week for an hour.

The Laundry room is in the small building behind the Day Centre and is part of the Peak Centre complex in Midhurst Road, Liphook. It has been running in its current form since 2011, though it has been in existence since the 1980's. The aim is to provide a laundry service at modest cost to the over 65's and to those with a disability or illness, whether permanent or temporary, who live in the locality. There are currently about 40 clients on the books with approximately 20 to 24 using the laundry on a fairly regular basis. About 20 people use the collection and delivery service.

If you feel you might be able to help, or would like more information, please get in touch.

Contact via email: info@liphookcommunitylaundry.co.uk
or telephone Helen Brown on: 01428 722875

Charity number: 1159540

Arts & Crafts Exhibition

By Carol Barden. Photos by Liphook & Bramshott Arts & Crafts Society.

The Liphook and Bramshott Arts & Craft Society (BLACS) held their Annual Exhibition at the Millenium Centre in October. Despite the rain, over 650 people were able to see the work of 39 Local Artists displaying 226 pieces of Art and Crafts. Once again, Bohunt School also provided an inspiring display of photographic work by their Year 11 students.

In addition to this, there were Greetings Cards, Crafts and Affordable Art (under £20) for Sale. Most visitors appeared to finish their visit with a trip to the Tea Room where there was a delicious array of home-made cakes to be enjoyed with the teas and coffees.

Members from the group gave visitors the opportunity to ask questions whilst they demonstrated on an eclectic range of techniques including Pastel Landscapes, painting with an iPad, Hydrangeas in Watercolour, Icon Painting and an Owl in Acrylic & Watercolour Pencils.

AWARDS WENT TO:

Committee Choice Award for Framed Art to
Sally Northwood for her painting "Bridgetta".

Committee Choice Award for Craft to
Catherine Staggs-Macey for her Ceramic "Skyline Vase".

Paul Bywood Award for Landscape Art in Oil went to
Wendy Richards for her painting "Langstone Reflection".

Louise Garwood Memorial Award for Floral Art went to
Jan Bebbington for her painting "Six Tulips".

Eli-Chem Award for Innovation went to
Julia Whittaker for her painting "Carolina Drake".

Andy Tubbs Award for Best Collection of Work Award went to
Diane Marshall for her 4 Bud Vases made with Porcelain Clay.

Visitors Vote Award for Framed Art went to
Andy Tubbs for his painting "A Cold Day in Lincoln".

Visitors Vote Award for Craft went to
John Winchester for "Looking for Lunch".

As of the 1st of January, there will be two big changes to the group. After a vote by the members earlier in the year it was decided to rebrand the group as "3 Counties Arts & Crafts" to reflect their geographic location. It will aim to offer greater support to the Arts & Crafts Community in the growing area of Bordon as well as Liphook and the surrounding areas.

Second is the launch of their new website where it will be possible for members and the public to see more of what the group has to offer.

This will include a full programme of Monthly Demonstrations held between 7.30 – 9.30pm on the 2nd Thursday of the month. All demonstrations are held in The Canada Room at the Liphook Millennium Centre, 2-10 Ontario Way, Liphook, GU30 7LD. Demonstrations are free to Members and £5 to Non-Members.

They start the year with a demo by a former Sky Arts "Portrait Artist of the Year" and "Landscape Artist of the Year" entrant, Stewart Beckett, who will be demonstrating a "Portrait in Oils" on 8th January 2026. Stewart will follow this up with an opportunity to practise the tips and tricks learnt with a workshop on Saturday 17th January 2026.

Popular local artist, Louise Turpin, will be demonstrating how to make more of your sketchbook, using mixed media techniques, on 12th February 2026 with a workshop on 21st February 2026.

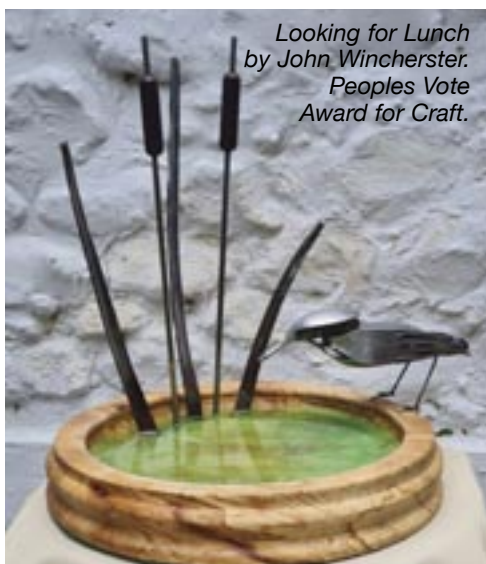
Monthly workshops are held at the Liss Triangle Centre, Mill Road, GU33 7DX on Saturday mornings. Set-up from 9.30am for 10.00am start until 4.00pm. With a few exceptions the workshops are £40 to Members and £50 for non-Members, which is amazing value.

For full details of all the 2026 demos and workshops and to book a (limited) place at a workshop please visit:

<https://www.liphookartsandcrafts.org.uk>

For the foreseeable future anyone using the old www address will automatically be re-routed to the new site.

If you would like to become a member, please check out the website. Annual Membership for 2026 remains at £30. There is also a new "Juniors" rate for Age 16 - 25 inc. of £15. Anyone joining now will have membership to the 31st December 2026.



*Looking for Lunch
by John Winchester.
Peoples Vote
Award for Craft.*



John. Demo in Pastels.

HASLEMERE CAMERA CLUB

Summer Outings 2025

By Clinton Blackman, Chairman H.C.C. Photos by Club Members.

We do not have regular club meetings over the summer months but instead take the opportunity to visit some of the many nearby locations that offer the possibility of exciting photographs. This year we went to Kingley Vale National Nature Reserve, to the Queen Elizabeth Olympic Park and to Selsey Bill, the southernmost part of our region in order to photograph the Milky Way.

Kingley Vale is part of the South Downs close to West Stoke in Sussex and it is a great place to visit if you have never been there. It was created in 1952, one of the first in Britain and it combines stunning landscape with a nationally important yew woodland and a variety of archaeological remains dating from the Bronze Age up to World War II. Some of the ancient yew trees were alive in the time of Henry VIII and are now over 500 years old. Their gnarled and convoluted branches offer endless photographic possibilities, especially to those with a vivid imagination, but they are so large that it is very difficult to photograph any single tree in its entirety. Even a special purpose "fisheye" lens with a 180 degree field of view only captures part of the scene.



Yew Tree at Kingley Vale.

The chalk grasslands in this reserve are home to a wide range of specialist plants including several species of orchids and there is also a large dew pond where dragonflies can be found.



Dragonfly at Kingley Vale.

In contrast, the Queen Elizabeth Olympic Park in the east end of London is less than 20 years old, having been constructed for the 2012 London Olympics. It contains a variety of different sporting venues including the London Arena, the Copper Box and the London Aquatics centre designed by world famous architect Zaha Hadid. V&A East has recently opened nearby and there are landscaped walks on the banks of the River Lee, which passes through the park. Altogether lots of things to see, including some stunning modern architecture.



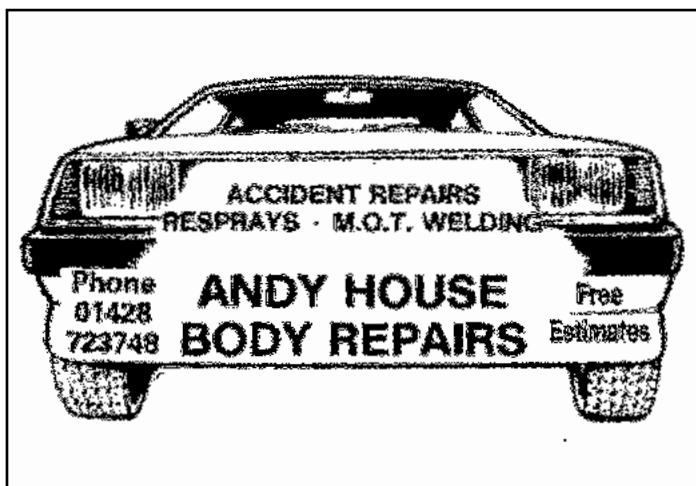
Olympic Park Architecture.



Our final outing of the summer was even further away - the Milky Way itself. The sensitivity of modern digital cameras and the sophistication of (freely available) image processing software means that it is much easier to take such pictures than readers might expect. However, it is necessary to get as far away from artificial lights as possible and to be sure that you have an uninterrupted view of the night sky - so we went to Selsey Bill in late July. At this time the Milky way is more or less due south at midnight and its brightest part (towards the galactic centre) is visible above the horizon in British latitudes. See the Back Cover.

We always welcome new members, irrespective of their age and experience. For more information about the club, please see our website: www.haslemerecameraclub.com.

Finally, don't forget that while we are formally the Haslemere Camera Club our membership is now spread more or less evenly between Haslemere, Liphook and from neighbouring villages up to ten miles away, so where you live is not a barrier to joining in.



A&D SWIMMING POOLS LTD

SWIMMING POOL DESIGN, INSTALLATION & MAINTENANCE



We are indoor and outdoor swimming pool builders and swimming pool maintenance experts

<ul style="list-style-type: none"> • Indoor & Outdoor Pools • Regular Maintenance & Repairs • Pool Renovations • Tiled & Liner Pools • Fully Insulated • Automatic Safety Covers 	<ul style="list-style-type: none"> • Leak Detection • All Energy Efficient Heating • Complete Packages Including Landscaping the Surrounding Area • Chemical Supplies • Free Local Delivery
--	--

Call us today for a no obligation FREE quotation on:
01420 487308 or 07738 935272
 Info@adpools.co.uk | www.adpools.co.uk






Three Frogs Nursery

For children from 1 to 5 years

48 weeks of the year

- ✦ Small, family run nursery
- ✦ Affordable and flexible childcare
- ✦ 15 and 30 hours funding for 3-4 year olds
- ✦ Large car park

Please contact us for more information or to book a visit

07877 699751

www.threefrogsnursery.co.uk

Liphook Methodist Church Hall
London Road, GU30 7AN

HELPING CHILDREN LEAP INTO THEIR FUTURE

TRY TAE KWON DO FOR FREE! NOW ENROLLING NEW BEGINNERS!



Learn Self Defence, Improve confidence, strength, fitness, flexibility and co-ordination in a fun and friendly atmosphere!
 Suitable for ages 6-55

Mondays: 7.15pm-8.15pm
 Liphook Methodist Church, London Road GU30 7AN

Book your two free trial classes here:
www.bookwhen.com/bytomictkd



Book Now:

Website: www.btkd.co.uk
 Email: info@btkd.co.uk

ENRICHING, EMPOWERING AND IMPROVING LIVES THROUGH MARTIAL ARTS

Mustangs at the Deers Hut

By Simon Catford.

The dictionary definition of a mustang is a free-roaming horse of the Western United States, descended from animals brought to the Americas by the Spanish conquistadors. But to members of the Surrey Mustang Owners Club the mustang means only one thing - a big American gas-guzzling muscle car! And they should know, as they all own and drive one (if not more) of these iconic motor cars from the 'sixties to the present day. And what beautiful machines they are too.

Like any owner's club, members like nothing better than to meet with fellow owners and discuss their pride and joy. Essential to any such meeting is a) some good food, b) a great location and c) a chance to cruise in their Mustangs. And the club have found no better place for all three than at the Deers Hut on the edge of the village.

Says pub Managing Director Deborah Steel "We have been proud to welcome the club to the Deers Hut for four years now and they try to come twice each year. What lovely people they are and it is a joy to lay on some refreshments for them and wander amongst the cars!" The most recent visit was on 23 August 2025 when some 32 cars assembled in glorious weather on the nearby A3 before they cruised into the pub car park which had been specially laid out for their use. A BBQ was in full swing and members and the public alike could chat with owners and admire these iconic, glistening vehicles. All very relaxed and a



Photo courtesy of Surrey Mustang Owners Club.

far cry from the hugely successful (too successful!) but manic classic car rallies held at the Deers Hut in recent years.

"This number is far more manageable for us at the Deers Hut," says Debbie "and we would encourage local 'petrol-heads' to come along when they next join us in 2026 to celebrate their 10th anniversary and enjoy the spectacle. We are promised some very special cars indeed and we cannot wait to welcome them!"

More details of the Surrey Mustang Owners Club and dates of their forthcoming visits can be found at:

<https://www.surreymustangownersclub.co.uk/>

There are also some good videos on YouTube of their arrival at the Deers Hut in August.

"Hasta la vista, baby" as Steve McQueen didn't say in Bullitt (with the best-ever movie car-chase scene featuring - you guessed it - a Ford Mustang!).

Liphook Millennium Centre

By Laura Russell.

Over the last few months we have had the privilege of hosting the BLACS annual art exhibition; Silly Scott's Halloween Spooktacular; McCarthy and Stone's Discovery Day; Fundraising events for Macmillan Research and a Himalayan Trek, Roller Skating, U3A open day; Stable Boxing match; Year 6 school leavers' disco; Hollycombe School end of year production, Planet Dance Show and countless parties.

We are already taking many bookings for 2026, so if you are responsible for booking events please get in contact with our Marketing and Events Officer, Laura, on: **01428 723889** or: events@bramshottandliphook-pc.gov.uk

Looking for a last minute Christmas present? Show tickets are always a hit! Here's a look at some of the shows and events taking place soon . . .



EPIC COMEDY

Following their sell out show in October, Epic Comedy are back with not one but TWO shows! Get ready for their Christmas show with TV sensations Paul Tonkinson (Live At The Apollo, Michael McIntyre's Comedy Roadshow), Russell Hicks (The Last Leg, Have I

Got News For You) and Esther Manito (Live At The Apollo, Hypothetical). Following this, they are booked to return on February 14th. Acts TBC soon! For more information or to book, please head to: www.epiccomedy.co.uk



AN EVENING OF CLAIRVOYANCE WITH LESLEY CARVER

As both a gifted medium and spiritual teacher Lesley has become known internationally through her stage shows, one to one readings and psychic classes as well as offering clients the opportunity to call one of her team.



PHIL GREEN

Comedian Phil Green will be heading over to the LMC at the start of 2026. Having definitely, totally 100% recovered from a breakdown, Phil now presents a show to save us all from a mental health crisis (well, maybe not everyone). As heard on BBC Radio 4. Following a sold-out run at Edinburgh Fringe and multiple award nominations. For more information go to:

<https://linktr.ee/philgreencomedy>

DATE FOR YOUR DIARY

MAD Panto . . . February 2026 Jack and the Beanstalk. More info coming soon.

ANNUAL PICNIC ON THE GREEN - MAY 10TH

We are offering local bands, singers and dance troupes the opportunity to showcase their talents in 20-30 minute slots. If you are interested, please contact the Events Officer on: **01428 723889** or: events@bramshottandliphook-pc.gov.uk

Girlguiding Liphook District

Liphook District has three Rainbows Units (ages 4 - 6), three Brownie Units (7 - 9), two Guide Units (10 - 13), one Ranger Unit (14 - 17), and a Trefoil group for adult members. Units are led by volunteers - trained Leaders, adult Unit Helpers and Young Leaders.



Brownies climbing.

Each group follows an age-appropriate Girlguiding programme relating to six themes, encouraging girls to gain badges which lead to bronze, silver and gold awards. Weekly meetings provide opportunities for girls to make new friends, discover and develop their talents, learn new skills, try new experiences, face challenges, learn to work independently and within a team, and have lots of fun in the process.

The range of activities covered in the past year is vast - the following is a small selection:

Rainbows held a unicorn themed sleepover in the Guide Hall. Together with some Brownies and Guides, they visited Bembridge Lifeboat Station on the IOW and were fortunate to arrive just in time to watch the lifeboat returning from a call-out and observe the boat inspection and cleaning routine.

Brownies attended the MAD Pantomime. They participated in events at the Mary Rose Exhibition and Legoland. One Unit had a Christmas themed weekend at Tilford and the other two Units held a residential weekend near Farnborough where they tried wall climbing and enjoyed a silent disco.

Guides had a fun evening at Ninja Warrior, Guildford, a 'night hike' at Waggoners Wells, cooked on fires in Blackmoor, floated miniature twig and string rafts in Radford Park, and practised

shelter building followed by a water fight on Bramshott Common.

Rangers and older Guides covered over 14 miles on foot, participating in the London Monopoly Run. They attended the County Rangerfest event in Shedfield, taking part in a wide range of challenges and activities. They stayed at Girlguiding HQ, London and saw Mamma Mia.

The annual Guide and Ranger summer camp was held near Hailsham and included a visit to an observatory and an evening at stock car racing.

Girls from each section attended a sleepover at a local library. They took part in Liphook Carnival, attended Remembrance Service, saw the film Moana 2 at Guildford Odeon, participated in Thinking Day celebrations in Portsmouth, made cakes and sold refreshments at both the Liphook VE Day event on the Green and the Carnival Fun Day . . . and so much more!



Our new Bell tents.

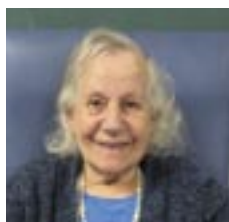


County Thinking Day event in Portsmouth.

LIPHOOK DAY CENTRE

Betty Stephenson

By Gabrielle Pike.



Betty was born in Basra, Iraq, into a Roman Catholic family. In the late 1950s, after the fall of King Faisal, life became increasingly dangerous for Christians. Betty's family made the brave decision to leave their homeland in search of safety and a better future.

At just 18 years old, Betty came to England to study nursing and she never looked back. Her compassion and dedication led to a long and rewarding 40-year career as a senior registered nurse with the NHS, caring for others and making a real difference to countless lives.

Betty married Ronald Stephenson and together they raised four wonderful daughters - Christine, Caroline, Angela, and Marie. The family spent two exciting years living in Canada during the 1970s before returning home to the UK. Today Betty's family has grown to include nine grandchildren who are her pride and joy.

Betty has always loved pasta, fish and chips, and a traditional Sunday roast. In her younger years, she adored dancing and

shared her home with her much-loved cat, Willow.

Betty will be turning 90 this year and her warm smile lights up the room. She enjoys all the games and absolutely loves music and dancing. She always tells everyone at the Day Centre how beautiful and lovely they are which makes Betty the beautiful and lovely one. She is part of the Liphook Day Centre family - caring with a cheeky glint in her eye.

LIPHOOK SCOUTS

Christmas Post

Liphook Scouts are again running their Christmas Card delivery service. The yellow collection boxes will be in Sainsbury's and Co-op from 6th - 20th December (noon).

40p PER CARD

Delivery from 21st December in Liphook, Bramshott, Passfield, Conford and Fernhurst areas only.

1st Liphook Scouts

1st Liphook Scouts has been running for over 50 years and comprises three Beaver colonies (6 - 8 years), three Cub packs (8 - 11 years), two Scout troops (11 - 14 years) and an Explorer unit (14 - 18 years). The group is run by a team of over 50 adult volunteers, bringing a wealth of experience from all walks of life. Having fun, playing games, working in a team and taking on new challenges are all part of the adventures our members undertake during their time in our group. We offer an extensive range of fantastic activities and opportunities for young people. From air rifling and archery (we have our own shooting and archery clubs) to camping and kayaking, 1st Liphook has something for everyone! Over the summer, we held camps for each section. Beavers spent time in Tilford, with activities including cooking on fires, archery and water games. The Cubs visited Tangmere Military Museum, went hiking and climbing, amongst other things. Meanwhile the Scouts and Explorers spent a week near Goodwood, with the packed programme including kayaking, cycling, orienteering, woodwork and much more.



Beavers have recently been hiking in the woods, working towards their Space Activity badge, baking for their cooks badge, learning about Diwali and dressing up for a Halloween-themed meeting.



Cubs have been climbing and pioneering, hiking, and playing wild games as well as going doughnutting and trying indoor caving.

Scouts have been working towards their Outdoors Challenge badge, focusing on knife and axe skills, fire lighting and shelter building.

Explorers have been undertaking another adventurous autumn programme. Recent activities include taking on a mountain bike trail, a night hike, a cooking challenge and a team building exercise.

LIPHOOK HERITAGE CENTRE Winter 2025 News

By Jenny Woodsford. Photos reproduced courtesy of the Heritage Centre.

The volunteers have had a busy few months again. Over the past couple of issues, we have heard about donations to the archive and another recent one is that of a horse brass.



A horse's bridle "brass" notated "Hogsflesh & Son Makers Liphook" was found by Russell Sansom with a metal detector at Hollycombe Home Farm during 2025. The Heritage

Centre already had some information, including a photo, about Tom Hogsflesh thanks to research carried out by the late Laurence Giles. Tom Hogsflesh, along with his father William, ran a harness and saddle makers workshop in The Square, conveniently near Windibanks Forge in the early 1900's. Indeed, whilst Hogsflesh & Son would have been leather workers, making bridles, harnesses and saddles, the horse brass, acting as their publicity on an item, would have much more likely been cast in the Forge.

Tom Hogsflesh, born in 1876 in Liphook, was a member of the Royal Flying Corps during World War 1 and we also know that he was the Clerk of Liphook and Bramshott Parish Council 1904-08, a Parish Councillor 1910-28 (less the years of his war service) and Chairman of the Parish Council 1924-25. The harness and saddle makers business appears to have ceased with Tom's retirement.



Visitors are always welcome in the Heritage Centre which is upstairs in the Millennium Centre and is open:

Monday 10.00am to 12.30pm

Wednesday 10.30am to 2.00pm

Friday 10.00am to 12.30pm

Saturday mornings when the Artisan Market is open

Email: liphookheritage@gmail.com

Phone: 01428 727275

Family Business Est 1985



AMBASSADOR
CLEANING SPECIALISTS

01428 722551

www.specialistcleaningcompany.co.uk
info@specialistcleaningcompany.co.uk

Quick Dry Deep Cleaning

Carpets • Rugs
Furnishings • Curtains

All types of flooring, including tile and grout,
limestone, marble and granite



**The Millennium
Centre**





**LIPHOOK
Village Market**

**Liphook
GU30 7LD**



Due to the resignation, for personal reasons of two committee members the Market on 13th December will be the last run in its present format. However, we are pleased to be able to announce that from the New Year the Market will be organised by Bramshott and Liphook Parish Council.

On behalf of the committee and stallholders, we would like to take this opportunity to thank all who have supported Liphook Village Market over the last 12 years, not only at the Millennium Centre, but also previously to that, at the Village Hall. Your support has been very much appreciated.

CHIROPODIST (PODIATRIST)

Regular visits to Liphook and surrounding areas

Patrick A. Brown MBChA MSSCh

Tel: 01730 821153

Ryonen, Nyewood, Petersfield, Hants GU31 5JA



CLARKE C-G GAMMON
1919



To arrange a **FREE Market Appraisal** of your home, contact your local Liphook office.
We also have offices in Haslemere & Guildford.

01428 728900

2 Midhurst Road, Liphook, Hampshire, GU30 7ED
www.clarkegammon.co.uk



**BAKEHOUSE
LIPHOOK**

*Freshly Made Loaves,
Sandwiches, Cakes
and Fresh-Ground Coffee*



Open: 07.00 - 14.00. Monday to Saturday

26 Station Road, Liphook, Hants GU30 7DR
Telephone: 01428 727771
Email: info@bakehouse.store

LIPHOOK • HASLEMERE • LISS
WWW.BAKEHOUSE.STORE

HEALTH AND WELLBEING

Joy in Beauty Beauty Treatments & Massage

By Jenny Woodsford.



I was recently invited to meet beauty therapist Lucy Tikaram in her studio which is tranquilly situated in the garden of her mother's home. Lucy moved to Liphook 22 years ago and attended Liphook Junior and Bohunt Schools before studying Beauty Therapy at South Downs College in Waterlooville. She has since worked in the beauty industry for the

past thirteen years, gaining more experience and also, about ten years ago, studying Reflexology. Lucy set up her own beauty salon in March 2025 and her business is rapidly gaining momentum, so much so that she is currently increasing her business hours and Joy in Beauty will be full time from January.

Lucy offers a full range of the usual beauty treatments such as waxing, eyebrow and lash tinting and lash lifts. Currently her Massage treatments are proving very popular. She offers a full range starting from back, neck and shoulder massages to full

body deep tissue or Hot Stones, Indian Head Massage and Reflexology. In addition, she offers Pregnancy Massage and Reflexology which Lucy finds particularly rewarding.

Reflexology is a non-invasive complementary health therapy that helps reduce stress and tension by using pressure on certain points of the feet or hands. Reflexologists are trained to use a "foot map" or "hand map" where certain areas correspond to areas in the body. Whilst reflexology is not used to diagnose or cure disease it is extremely useful as a complementary treatment alongside conventional medicines or treatments or can merely be used for relaxation purposes. Lucy offers taster Reflexology treatments for 25 minutes or a full session for 40 minutes.

Lucy says that one of her packages - A Moment of Bliss - almost always sends her clients to sleep as it is so relaxing; it consists of 30 minutes of Back, Neck and Shoulder massage and 30 minutes of Reflexology. It sounds very inviting!

Have a look at Joy in Beauty on Facebook or Instagram and maybe book a treatment accompanied by calming music in Lucy's garden studio.

E: joyinbeauty@outlook.com

I: [joyinbeautybylucy](https://www.instagram.com/joyinbeautybylucy)

M: 07837732337

Highfield and Brookham Schools

Following our recent Harvest Festival, some of the Year 8 pupils, along with Head, Suzannah Cryer, delivered the collection in person and met with the team at the Food Bank. "We were genuinely moved by the generosity shown by our school community," said Mrs Cryer. "Supporting our Local Food bank gave our pupils a real sense of purpose and a tangible way to give back. Our pupils truly embraced the spirit of giving, and they felt proud to contribute to a cause that directly helps local families."



Mary Braitch, Trustee at Liphook Food Bank, commented, "I want to thank everyone at Highfield and Brookham who donated, collected or delivered the most amazing haul of Harvest Festival goodies. It was incredibly generous of everyone involved and will make a huge difference to the lives of many local people who struggle to feed themselves and their families. As you know, the price of food (as well as other essentials such as energy) is at a very high level and still increasing, so more people are having to use Food Banks to help. We are proud to be able to provide a service to many households, but we could not do this without the support of generous partners such as Highfield and Brookham."



The Local Story of the National Trust

By Simon Catford.

Devil's Punchbowl.



One of the many benefits of living in the parish of Bramshott and Liphook is the easy access to huge tracts of open spaces including commons, heath and woodlands much of which is owned by the National Trust (NT). As it celebrates its 130th anniversary, readers might be interested to know that much of the foundations of the NT were laid here in the Surrey hills which might account for the high proportion of local land in its ownership.

The NT was originally founded as a charity in 1895 by three eminent Victorian luminaries; Sir Robert Hunter (Solicitor to the General Post Office, who lived in Haslemere from 1882); Octavia Hill and Canon Hardwicke Rawnsley, both social pioneers of their time. All three were passionate about providing clean, fresh air and a natural environment for city-bound workers and their families and that nature, beauty and history were for everyone. Although Sir Robert was perhaps a little less high-profile than his fellow founders, he was the NT's legal advisor and its inaugural Chairman.

The first land-holding given to the NT was five acres of clifftop at Dinas Oleu in Wales; its first building was Alfriston Clergy House in East Sussex purchased for £10 in 1896 and its first nature reserve in 1899 was Wicken Fen, near Cambridge. But then they landed a very high-profile acquisition - that of Hindhead Commons and the Devil's Punch Bowl. This was in no small way as a direct result of Sir Robert's local contacts.

Hindhead Common and the Devil's Punch Bowl were owned by the Bishops of Winchester for many centuries, but by the mid-1800's had become part of South Park Farm, immediately south-east of Hindhead. However, in 1890 a wealthy financier, Whitaker Wright, acquired South Park and the adjacent estate. Wright had made his fortune in mining, spending much of it on impressing guests with an enlarged house and gardens, naming his extended estate Lea Park. However, his business empire collapsed and the estate had to be sold to pay his debts*. With Sir Robert's legal expertise and local knowledge, he wasted no time in securing some 750 acres of Lea Park. Through the Haslemere Commons Preservation Society (now the Haslemere Society) he raised £3,625, successfully bid for the land in 1905 and the following year it was gifted to the NT.

Nothing succeeds like success and the acquisition of the Hindhead Commons created so much public interest and support for the new NT that further gifts of land and money were quick to follow, thereby firmly establishing the charity.

But that was not all; this land needed to be managed although in those early days the Trust had no means of doing so. Enter Sir Robert again who set up the Hindhead Commons Management Committee. Acting as Chairman he recruited his local friends to join including Sir Arthur Conan Doyle (creator of Sherlock Holmes who lived at Hindhead in Undershaw House) appointing him as Honorary Fire Captain.

It seems this first Committee was mostly concerned about fire, disfigurement of the hillside by unauthorised quarrying and inappropriate use of vehicles. Not much has changed over the decades! Volunteers continued to manage the local commons for over 80 years until the NT secured the funding to provide full-time management. However, remnants of the old committees can be found as the Black Down and Hindhead Supporters and the Ludshott Committee (from whom much of the research for this article was based) who continue to advise and raise funds for local NT properties. Further information can be found at:

<https://blackdownhindheadnts supporters.org/history/>

Over the years, more sites came under the protection of the Hindhead Commons Committee and the NT and readers might be interested to know how they came about:

1931 - **Tyndall's Wood** was a bequest from the widow of Professor Tyndall, the renowned nineteenth century physicist, who first explained why the sky looks blue.

1938 - 170 acres at **Highcombe Edge** were acquired with part of a substantial bequest from W.A. Robertson made on behalf of two of his brothers who were killed in World War I.

1936 and 1945 - 60 acres at **Marley Wood** were gifts from the Misses E.A. and Phillis Day.

30 acres at **The Roughs**, 27 acres at **Boarden Door Bottom** and the **Shottermill Ponds** were acquired via anonymous gifts and local appeals.

1927/28 - The first 85 acres of the wooded **Golden Valley** were bought by public subscription and the help of Dr. Marie Stopes (another social pioneer). Most of the remaining 41 acres was given in 1973 by Haslemere Urban Council and Cdr. Ronald Manners-Clarke, a Hindhead Commons Committee chairman.

1942 - Approximately 500 acres of the **Black Down** hilltop were offered for sale by the Cowdray estate. Mr Edward Hunter (no relation to Sir Richard...) purchased the land and gave it to the NT in 1944 in memory of his wife, Mabel. The circular stone bench at the Temple of the Winds is dedicated to her.

1952 - 60 acres at **Swan Barn Farm**, immediately behind Haslemere High Street, were left to the NT by Mrs Potter, but

(unusually) without an endowment. Substantial gifts from the Rt. Hon. Lord Alvingham (who had been chairman of the Haslemere Preservation Society) and an anonymous donor, allowed the Trust to take on this traditional small-holding of small fields and ancient woodland along the valley at the northern foot of Black Down.

1955 - 50 acres at **Hurt Hill** were acquired as the result of a bequest from Mr E.S. Arnold. Formerly part of the original Lea Park estate, this predominantly wooded area had been the deer park created by its owner, Lord Pirrie, in about 1910. He also built the belvedere at the Temple of the Four Winds where his shooting party guests enjoyed lunches overlooking his magnificent Lea Park Estate.

1991 - **Valewood Park** was acquired as the result of a local appeal and a bequest from Mrs G.M. Mills. Adjoining Black Down,

its 99 acres consist of meadows and parkland surrounded by woodland and lie between Chase Valley and Fernden Lane.

And in the present day the NT continues to prosper despite the ever-increasing costs and obligations that come with such a large land-holding. Interestingly, membership of the Gen Z demographic shows the biggest growth in recent times and it is pleasing to see that the hard work and vision of the founding fathers over a century ago is still enjoyed by so many people. And it is all on our doorstep. To join the National Trust visit:

<https://www.nationaltrust.org.uk/membership>

**Wright's story has an unhappy ending; he was accused of fraud, fled to New York but was returned to face trial at the Old Bailey in 1904 where he was sentenced to prison. But he took his own life in the cells below court rather than face a life in jail.*

LIPHOOK u3a

The Sky's the Limit - Literally

By Andrew Earwaker.



Following a short break, the Liphook u3a's 2025 programme of speaker presentations resumed in the

Autumn. The programme commenced with Sheila Willis providing a carefully researched and personal account of the history of women in the police force; this was followed in October by Neil Tucker, describing the work of his charity, Aerobility, which teaches people with disabilities to fly in specially adapted planes. One of our members was so inspired that she signed up on the spot! We hope to provide photos and more details of her adventures in due course.

This was followed by Bobbie Darbyshire on 3rd November with a talk entitled "A Beginning, a Muddle and an End" which explored the creative writing process for novelists. Our final offering of the year on 1st December will be Jenny Mallin giving a rare and fascinating insight into production life at the BBC.

An exciting and varied programme is now being pulled together for 2026. By way of a sneak preview, however, we have four speakers confirmed to take us up to Easter:

In January (5th) Sheila Willis returns with "Beside the Seaside". In February (2nd) Tony Harris, last seen as Margaret Thatcher, makes his debut as Donald Trump! Our March (2nd) event features Jim Miles on William Morris which takes us to 13th April and the AGM when Barrie Watson will talk on Domesday Liphook. All dates and details will be found on our website.

In the meantime, our special interest groups continue to thrive. For example, the Geology Group has taken its members back in time to the Cretaceous period through an exploration of the rocks and fossils deposited under Liphook. The Theatre Group has unveiled its programme of visits for early 2026 including Agatha Christie's "Death on The Nile" at CFT and Matthew Bourne's "The Red Shoes" at the Mayflower Theatre. Our 'Have a Go Group' has featured in the national u3a press describing the range of activities enjoyed by its members including indoor sky-diving, go-karting, clay pigeon shooting and segway riding.

VOLUNTEER NEEDED

We are seeking a volunteer, with experience of Wordpress and/or Siteworks, to help us maintain and develop the Liphook u3a website. The time commitment is around 3/4 hours per month variable. If you are able to help, please contact: chairmanliphooku3a@yahoo.com

U3A COOKS UP A SUCCESSFUL AUTUMN OPEN EVENT

The "Men Wot Cook" Group led by the irrepressible Martin Humphreys was one of twenty special interest groups which took part in the Liphook and Area u3a Autumn Open Event held at the Millennium Centre on 22nd October.

Kind weather, and perhaps also the prospect of the excellent home-made cakes which were served up with tea and coffee by u3a volunteers, ensured a strong turnout from the local community, including a number of residents new to the area. Visitors were able to see at first hand the variety of activities which the u3a in Liphook has to offer for those who are no longer in full-time work, or who are retired or semi-retired.



Displays covered a wide range of interests from the cultural such as - Theatre, Creative Writing, Film Appreciation and Exploring Arts to more practical activities like flower arranging, cardmaking/papercraft and games. Those looking for outdoor pursuits were not disappointed as Golf, Walking, Geology, Boules and "Have a Go" (at anything) were also featured. Some groups, such as Creative Writing 2 and Poetry Appreciation, were recruiting for the first time thereby adding to the wide range of special interests available to members.

The success of the event could be measured not only by the high level of interest generated amongst visitors but also by the numbers who subsequently signed up to join the u3a and its groups on the day.

If you missed the Open Event and would like more information on Liphook u3a and how to join, visit: liphook.u3asite.uk



ROBERT HERRON BDS.DPDS
DENTAL SURGEON

**AFFORDABLE PRIVATE
DENTAL CARE FOR
ALL THE FAMILY IN
A CARING, FRIENDLY
ATMOSPHERE.**

DENTAL PRACTICE
6, HASLEMERE ROAD
LIPHOOK, GU30 7AL

TEL: 01428 723096

EMAIL: R.HERRON@RHERRONDENTAL.CO.UK

WWW.RHERRONDENTAL.CO.UK



**PRINT+
DESIGN IT**
GRAPHIC COMMUNICATION

FESTIVE OFFERS

Christmas Cards, Calendars,
Gift vouchers and Digital
Christmas advertisement.

We're a graphic communication
company based in Liphook, ready
to create, produce & fulfil all of your
business or personal design and
print requirements.

01428 728 620

www.printanddesignit.co.uk
work@printanddesignit.co.uk

Unit 12 | Beaver Ind Est | Liphook | Hampshire | GU30 7EU



Picalily

 GARDENING

**We are proud to announce that we are now offering a full tree surgery service,
including crown reductions, tree removal, T.P.O. advice and stump grinding.
We can also advise and supply trees to regenerate areas.**

Let us help you keep warm
this winter with seasoned
logs, kindling wood and
coal that can all be
delivered free of charge.

**Rain or shine you'll
see us out there!**

We can supply -

Bare root hedges, trees of all sizes, woodchips, spring bulbs and a vast
array of shrubs and summer bedding.



All your Garden needs -

- Mowing, strimming and turfing
- Weeding to rotavating
- Plant and shrub care
- Leaf clearing to garden clearance
- Gutters and drains
- Paths, patios and drive cleaning
- Domestic Fencing
- Green waste removal
- Hedge cutting, pruning to small tree removal.



**For a free friendly quote call Pete on:
0777 587 4988 / 01730 894429**

Email: picalilygardening@gmail.com Web: pic-a-lily.co.uk

Laughing Our Way Around Norfolk

By Marilyn Ambrose.

That is how I would sum up the Countryside Companions Walking Group annual holiday in October. Over three days, nine of us walked 24 miles along the Peddars Way from our base in Watton over somewhat flatter terrain than we are used to in Surrey and Hampshire. The full title of this path is the Peddars Way & Norfolk Coast Path, which is slightly strange as we were



nowhere near the coast - we will only get sea glimpses next year when we continue the path north. But you kind of know it's going to be enjoyable when the text goes out around 6.00pm on the first evening "Gin o'clock?"

The first days' walk started from Hockham Heath and took us south, stopping for an amazing lunch break at the Pit Stop just off the main road at Roundham Heath - totally recommended if you are ever on the A11 near Thetford. After lunch we set off through woodland, spotting Vipers Bugloss and Evening Primrose on the way, crossing the River Thet to arrive at Thorpe Forest. Describing it as a holiday park does not do it justice, as it is a collection of luxurious log cabins beautifully dotted about in the woodlands (shades of French holiday parks) where they also had a fabulous café, to sustain us for our onward trek to Knettishall Heath.



Next day saw us back at the same starting point, Hockham, but this time we went north, walking all the way back to Watton. The weather was perfect, making the autumn colours of the trees look especially stunning. We passed enclosures containing Norfolk Black turkeys - feeling slightly guilty as they seemed so pleased to see us - they might not be so pleased in a few weeks' time! The terrain was a bit different today - quiet forests, with pine, oak and beech trees, passing the serene Thompson Water. This area is an SSSI and contains a number of pingos, damp, water-filled depressions formed by the melting of ice at the end of the last glaciation. (In writing this article, I confess I have only just found this out, which would explain why we kept seeing signs for the pingo trail - there was me expecting to see Pingu every time we rounded a corner.) Clear blue skies meant it also was our best day for glimpsing (and hearing) distant F15's flying out from one of the many air force bases nearby.



All too soon the last day arrived - our final route took us from South Pickenham, via a community run café (great cakes) in North Pickenham, up to Castle Acre, where we discovered (some to our horror) that there are hills in Norfolk! Different terrain again today - through farmlands, passing many varieties of pig house. We were particularly fascinated by what looked like pig glamping tents - igloo type structures (officially called domed farrowing huts). Apparently Jeremy Clarkson had a hand in designing a piglet safety feature for these. We climbed up to the ruins of the Castle and the Priory in Castle Acre - in fact it is only 197 feet high, half the height of the highest point in Norfolk - sad our holiday had come to an end but with some great memories to take home with us and looking forward to more

adventures along the Coast Path next year.

You see an area so differently and find out so many random facts when you are walking, especially with friends.

If you have enjoyed this glimpse into our walks, do look at our Facebook page, Countryside Companions Walking Group, to see if you might like to join the group on our weekly walks locally.

Pig Arks by Marilyn Ambrose.



Answers to the Quiz in the Autumn Edition

Where in the Parish of Bramshott and Liphook?

- 1 'Liphook' sign outside the Sorting Office.
- 2 Gateway to St Mary's Church churchyard. Designed by Harry Inigo Triggs.
- 3 Roundabout Cottage Bramshott. Boris Karloff.
- 4 Goldenfields Chiltley Lane.
- 5 Clock above Hamptons Estate Agent. Roman numeral IIII used to avoid confusion with VI and IV.
- 6 Railway Station.
- 7 Tap House the Square.
- 8 The Prince of Wales pub Hammer Vale.
- 9 Outside the old rectory in Portsmouth Road. A Church signboard was originally mounted on the wall.
- 10 St Mary's Churchyard / Bramshott Manor.
- 11 Located on Foley Manor Drive. Field Marshall Hugh Rose, Lord Strathnairn, Commander in Chief India 1861-1865.
- 12 Radford Aqueduct.
- 13 Bier House St Mary's Church. Used to store bodies securely before burial to prevent body snatchers.
- 14 St Mary's Church weathervane. No compass points 'NEWS'.
- 15 Malthouse Farm barn Haslemere Road. It is a heraldic plaque of William of Wykeham Bishop of Winchester. inscription reads 'Manners make Man'.
- 16 The Links pub Portsmouth Road.
- 17 The Gate House in front of Little Boarhunt Portsmouth Rd. Designed by Harry Inigo Triggs.
- 18 Under the A3 River Wey Bridge.
- 19 Sign from the Seven Thorns Pub at Bramshott subsequently renamed The Spaniard. Now demolished and replaced with a car showroom and garage.
- 20 Milestone Portsmouth Road.

The Churches of Liphook



Welcome to Liphook Churches' Christmas Services 2025

Details are correct at time of going to press, but please check before attending.

METHODIST CHURCH

Saturday 13th December

Carol Service - 6.30pm.

CATHOLIC CHURCH

Friday 5th December

Candlelit Carol Service at St Joseph, Grayshott - 7.00pm.

Wednesday 24th December

Christmas Carols at Immaculate Conception, Liphook - 6.00pm.

Vigil Mass of Christmas at Immaculate Conception, Liphook - 6.30pm.

Christmas Mass in the Night at St Joseph, Grayshott - 10.00pm.

Thursday 25th December

Christmas Mass at Dawn at St Joseph, Grayshott - 9.00am.

Christmas Mass in the Day at Immaculate Conception, Liphook - 11.00am.

CHURCH OF ENGLAND

Sunday 14th December

Carol Concert at St Mary's Bramshott - 6.00pm.
Followed by Drinks and Eats.

Sunday 21st December

Crib Service at St Mary's Bramshott - 9.30am.

Kids are invited to come in character!

Wednesday 24th December

Christingle Service at Liphook Church Centre - 4.00pm.

Midnight Communion at St Mary's Bramshott - 11.00pm.

Thursday 25th December

Christmas Day Celebration at St Mary's Bramshott

- 9.30am (or at 8.00am for the keener quieter ones!)

TRINITY

Sunday 21st December

Christmas Family Service at Liphook Infant School - 11.00am.

Carol Service at Liphook Infant School - 5.30pm

Thursday 25th December

Christmas Day Family Service at Liphook Infant School - 10.00am.



Methodist Church

Recently, we had to have our elderly cat put to sleep, and I'd like to thank the wonderfully kind staff at Woodland Vets who made a painful time bearable for our family.

The cat truly left a mark on me, for a few weeks before she died, she decided to bite my hand. She had scratched me before, and I used to deal with the problem using antibacterial spray and antiseptic cream.

Teeth, however, are a different matter and before long, my hand swelled up. The village surgery advised me to go to the Minor Injuries Unit at Haslemere. When I got there, I discovered they were no longer the Minor Injuries Unit but the Urgent Treatment Centre and they lived up to their new name. I was seen within fifteen minutes of arrival and the staff member who treated me was excellent.

"How long since you last had a tetanus jab?"

"No idea, I don't go on exotic holidays, so maybe not since school."

"Are you allergic to antibiotics?"

"No, I've never had a problem with them."

"Well, these are very strong antibiotics: you will need to cancel your diary for the next few days."

Cancel my diary? That took me aback. But he was right. I had quite a few 'spaced out' episodes while I was on the tablets.

Having to cancel the diary can be sobering. It reminds me that the world doesn't depend on me. It's not my efforts that make a decisive difference.

Neither is it my efforts that make the decisive difference in being accepted by God. I will always fall short of his standards. So will you. In the Christian faith, we don't climb up to God by our good deeds for none of us can reach his standards. Instead, he descends to us.

And that is what we celebrate at Christmas. God bridged the gap where our efforts fall short by sending his Son, Jesus.

Why don't you try one of the Liphook churches over Christmas and find out more about this God who reaches out across that gap through Jesus?

I hope to meet you there.

Reverend Dave Faulkner

The Methodist Church

Sunday Worship at 10am

www.liphookmethodist.org

Good News!

A community cafe will be opening every Thursday morning, beginning 8th January 2026 in St Mary's Church Bramshott from 11.00am to 1.30pm.

We will be serving coffee and tea with biscuits, homemade cake and homemade soup with bread; donations will be very welcome (cash only please). Well-behaved dogs on leads are welcome and there is a play area for young children with toys and books.

We look forward to welcoming you all.

Mo & Friends

Church of England

There are three ways we get it wrong! When we look into the eyes of a small child, we can often find in their innocent gaze something that we've forgotten. A hope and a joy in the world around them, an innocent trust that we miss. Then there's all the rubbish we inherit. Our parents may have been amazing but they probably got it wrong in some way too! However loving and kind they can't help passing the rubbish on.

There are many addictions and some are even socially acceptable like worry, ambition, independence and pride.

Finally, we have this amazing capacity for stupidity! We cross the line. You just have to tell a kid not to do something and they want to do it. We may think we learn from all our mistakes but we tend to get tarnished along the way, and we've probably hurt other people too.

No wonder when we look at the world around us amidst the beauty and the sheer magic of it all - this incredible gift that took 4.5 billion years to make - we see so much pain! It's into this world that our amazing Father sent a gift that was just so precious, so pure, so full

of life and beauty and gentleness, that 2 billion people are still talking about it. The gift of a baby who in his pure humanity redefined what it means to be alive, and showed us the way back to the love and delight and peace of the Father. For to us a child is born, to us a son is given! This is the heart of Christmas. So come to church. There are 4 churches in our village we're all doing really great things over Christmas. Be open, step out of your front door and try a different universe. You'll discover more than you could possibly imagine!

Reverend Valentine Inglis-Jones



**St Mary's Bramshott
Church Centre Liphook**

Sunday worship at St Mary's, Bramshott at 9.30am
Sunday worship at Church Centre, Liphook at 10.45am

www.liphookchurch.co.uk

Catholic Church

There should be no shortage of chestnuts to roast 'by an open fire' this Christmas if my Presbytery garden and car park are anything to go by. I have been inundated with the prickly shells and glossy nuts; plenty to give bagfuls away to friends and relations as well as for my own use. And it is not just chestnuts. In the wild, beech nuts and acorns are in abundance; in orchards and gardens it has been a record-breaking year for apples and plums. Such a year of unusual abundance of crops is known as a Mast Year and scientists are not sure how the trees coordinate the response which happens across species and across geographical areas. Some think it might be a response to the severe environmental stress of the long, dry summer we had this year and that, by producing far more seeds and nuts than the squirrels etc could possibly eat, the trees are trying to ensure that if they should perish there may be new trees to replace them.

Our society has also been under great stress over the past few years with great political and economic uncertainty and deep

divisions both in our country and across the world. The Church has not been immune to these stresses, but we have begun to see signs of hope that the Holy Spirit may be prompting it to produce its own new abundance of fruit. My own experience matches a recent survey which identified a quiet revival in churchgoing, led predominantly by young people of the so-called Gen Z, seeking a meaning to life beyond the materialistic culture in which we live. Let us pray that we might see a bountiful crop of kindness, compassion and generosity in our country and across the world.

Father Simon Chinery



LiphookCatholic.uk

Church of the Immaculate Conception

Sunday Worship at 11.00am

www.grayshottcatholic.uk/mass-schedule

Trinity Church

As I write this article there has recently been the start (and I hope is still continuing when you read this) of a much welcome ceasefire in the Gaza conflict. Whatever your view of that situation we can all, I hope, welcome the end to hostilities and the hope of a more peaceful future.

We all desire peace. We long for it. Whether amidst the rancour of family squabbles or the aggressive campaigning of one political faction or another, we know these situations are less than ideal. We want harmony, we don't want discord.

For the Christian the hope of real peace is found in the Christmas story, in the words of the angels to the shepherds recorded in Luke 2:14, where the angels speak of 'peace' on earth. But that doesn't mean an inner or subjective peace, but rather it means the opposite of discord. It means reconciliation. And that is how Charles Wesley put it in his famous carol 'Hark! The herald angels sing'. In the first stanza we find these words: "peace on earth and mercy mild, God and sinners reconciled!"

This is the peace that is promised at Christmas. That in Jesus we can find peace with God. That of course is the big problem we all face, that we are those who have rejected and turned away from our good creator. But in Jesus there is wonderful hope that our broken relationship with God can be mended. That we can be reconciled to our creator. If you'd like to find out more about this good news why not come along to one of our Christmas services? You would be most welcome.

Pastor Sean Clokey



trinitychurch

Sunday worship at Liphook Infant School
Trinity Kids - 9.45am Trinity Training - 9.45am
Morning Service - 11.00am Evening Service - 5.30pm

www.trinitychurch.tc



Dedicated To Supporting You Along Every Step Of Your Business Journey

Expert, trusted, and affordable accountancy services for every budget.
Visit www.jmbaccounting.co.uk or get in touch today on 01428 727313



CHIROPODY

THE SQUARE, LIPHOOK

CALL:

FIONA WEBBER

01730 710461

FOR APPOINTMENTS



CR11BBB

3A High Street
Headley
Bordon
Hampshire GU35 8PP

For Airport
Connections and
Business Travel

Contact: Paul Cribb
Bookings: 01428 717 896
Enquiries: 07777 673 953
Email: cr11bbb@btinternet.com

THIS IS THE WAY FORWARD

BROWNING PEST SERVICES LTD.

MOLES • RABBITS • SQUIRRELS
RODENTS • WASPS



NO CATCH NO FEE

for Moles and Squirrels

- Full insurance and CRB checked •
- Based in East Tisted, North Hampshire •

Contact Nick on:

0771 713 2276

FIND US ON FACEBOOK



Local care, tailored to you.

McDonald
HOMECARE

01730 624 070
mcdonaldhomecare.co.uk

Telephone us for a friendly
call about care in your home



Music and Beer Festival

By James Graves. Picture by Debbie Curnow-Ford

Bramshott and Liphook Social Club manager James Graves proposed a collaborative event between the Village Hall and the club - a Free-For-All Festival - to give something back to the community while raising awareness of these local facilities.

He said: "The event was fully funded by our generous local businesses through sponsorship donations. In return, their branding was featured on the club's website, social media, radio promotions, event banners, and mentioned on stage throughout the day. I want to say a special thanks to our sponsors - Liphook Carpet Warehouse, Liphook Howdens, One Six Events, Homes Estate Agents, JMB Accounting and Smart Signs Group for their contributions."

Stalls on the Day were:

- Buckaroo Brew (Tea, Coffee, and Toasties) with their converted horse trailer
- Gourmet Grub Hub in their large food trailer (extremely popular!)
- Ponnamma Kitchen (a new Sri Lankan takeaway in Liphook)
- Beer and Ale Festival Tent (provided by the Social Club)
- Children's Drinks and Soft Drinks Stall
- Cocktail Bar (provided by Berkshire Bar Co)
- Liphook Howdens Stall (one of our sponsors)
- The Social Club Bar was also open inside.

A huge marquee and stage hosted live performances from



Charlie Luffrum, Willie Austen, and One Chamber Down, followed by a disco that kept the party going into the late evening.

James added: "The music was outstanding and received phenomenal feedback from attendees. The food and beer festival was a big hit. The event ran seamlessly, with everyone clearly enjoying themselves. The positive comments shared across Facebook were wonderful to see. The ticket-free event ran from midday until late evening, it was a long but incredibly rewarding day for us organizers.

"We're excited to announce that next year's festival is planned for Saturday, 15th August 2026. Who knows - this could become an annual tradition!"

BRAMSHOTT & LIPHOOK VOLUNTARY CARE

Set the Wheels in Motion

By
Wendy
Moore.

A year or two ago, I wrote a piece for the Magazine about this remarkable charity which operates locally. It primarily provides transport for those in the Parish of Bramshott and Liphook who need any medical treatment, be it hospital or dental appointments, visits to opticians, podiatrists or ear clinics. Having then provided information on Bramshott & Liphook Voluntary Care, I'm now on the hunt for more drivers.

Unfortunately, due to natural wastage (age and infirmity!) the number of drivers is so few that on many occasions, much as we would like to, we are unable to provide someone to drive to an appointment and we would like to change this.

DO CONSIDER VOLUNTEERING AS A DRIVER

You would be contacted by the Voluntary Care Co-ordinator and offered a drive and if you accept it, you are then provided with the pick-up address. People may have fold-up walkers or wheelchairs but if they need assistance, then they will need to bring a friend or relative along to assist as we are not permitted to do so as a driver. In any case, sometimes it is impossible to stop for more than just the time it takes the passenger to get out of the car. We try to get some idea of how long the appointment is likely to be so we can decide whether to wait nearby, go off and do some shopping or find somewhere for a cup of coffee. When the appointment is over, the person

involved (or receptionist) will phone you and you return to pick them up from where you dropped them off and then take them home. Most are straightforward visits to local surgeries and hospitals where you can wait in the car park for your passenger to come out. Visits are also made to hospitals further afield such as Southampton, Basingstoke and Frimley and on occasions, to London.

You can decide how frequently you want to drive and there is absolutely no obligation to accept any drive. You can elect to only drive on a Tuesday, say, or only to local appointments. As a driver, you will need to make a judgment call as to how long it will take you to get to wherever you're going and often have to factor in the Liphook "rush hour". Mileage is paid at the standard Government rate and you will need to let your insurance company know that you are driving voluntarily. My own insurance company is perfectly happy with this arrangement and there is no extra charge required.

If you are interested in volunteering for a very rewarding job, and would like to give something worthwhile back to the community, then please contact Voluntary Care on **01428 723972** for more details. You just might get to meet some very interesting people as you transport them to their appointments and learn some fascinating histories of both them and the village.



Private Dentistry
Welcoming new Patients

OAK LODGE DENTAL

- Family dentistry
- Invisalign® teeth straightening
- Implants
- Teeth whitening
- Advanced root canal treatment
- Advanced periodontal treatment
- Facial aesthetics
- Sedation
- Interest free payment scheme
- Dental maintenance plan

Contact us now for further details

Telephone: 01428 723179

Email: smile@oaklodedental.co.uk

Find us on:
Facebook: Oak Lodge Dental
Instagram: @OakLodgeDental

Oak Lodge Dental, Headley Rd, Liphook, GU30 7NS

BLACK RHINO ELECTRICAL

Your local, family run domestic electrician with over 20 years experience. No job too big or too small. Please feel free to contact us to discuss your electrical needs.



- Full Re-wires
- Electrical designs
- Additional circuits
- Light installations
- Inspection and Testing
- Consumer unit changes
- Extensions
- Fault finding and repairs



Contact Details:
Mobile: 07842 571 413
Email: blackrhinoelectricaluk@gmail.com

At Liphook Tree Surgeons we offer a full range of arboricultural services from planting right through to felling and stump grinding.

With 20 years experience in the industry we're confident we can meet any requirements you may have. Feel free to get in touch with us to discuss how we can help.

Services we offer include:

Felling & Dismantling	Stump Grinding
Crown Reduction	Specialist Machinery
Hedge Cutting	Dangerous Tree Removal
Site Clearance	Woodland Management



Call: 07920 057 009 | www.liphooktreesurgeonsltd.co.uk | Email: liphooktrees@gmail.com

Liphook in Bloom



By Allison Harding.
Photos by Liphook in Bloom.

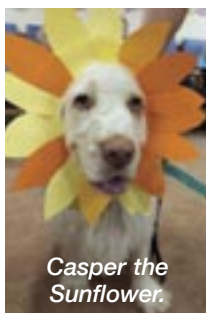


Sunflower.

From small beginnings, mighty things can grow! This has always been true for Liphook in Bloom and our sunflower competition this year produced some simply stunning flowers. The tallest sunflower made a spectacular 360cm (that's 11 feet and 9 inches), and the plant with the most blooms had 65 flowers! Yes, we did count them.

Some of the competition entrants had

such fun that they have decided to join our fabulous group of volunteers who keep the village looking so good. Not everyone fared well with their seeds, but the Liphook Day Centre members remained undaunted and entered themselves, and Caspar the dog - as sunflowers.



Casper the Sunflower.

The large bed outside the Sorting Office has been very popular this year with a cottage garden theme, and all the plants grown from seed by our volunteers. We grew beans, tomatoes, courgettes, chard, cavolo nero, and lettuces in amongst the cottage garden flowers. The produce was not wasted as our volunteers took it home to enjoy. Let's not forget the scarecrow! If you attended the Carnival, you would have seen him making his final appearance on the Liphook in Bloom Carnival float.

J.R. Luff and Co. of Headley supply Liphook in Bloom with quality bedding plants, which have continued to bloom throughout the Summer. In addition, they also planted the bed by the Parish Office with a very colourful display.



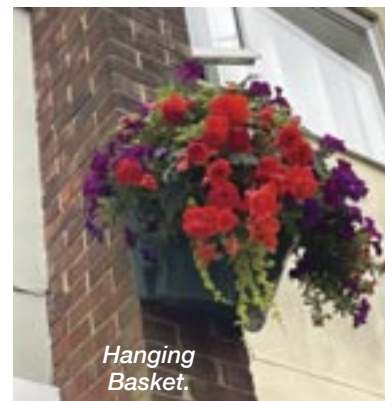
Wild Flower Patch.

The wildflower display by the Millennium Hall has done very well again. But wild does not always mean effort free. The ground is mowed by the Parish Council Grounds Team who scythe the flowers so that LIB can collect the seeds to re-seed the display for the following year. Every three years, the area needs to be revitalized by rotavating the ground which is then re-seeded. This year the Grounds Team did that work

for us, for which we are grateful, and we look forward to enjoying that area again next year.

As we get ready to wrap up the year, we take a break from tending the beds. The summer bedding has been cleared, the beds dug over, and in some cases sieved to remove persistent weed growth, and the bulbs have been planted - some 7,000 of

them! The Christmas lights are up in the village, and our volunteers are taking a well-earned rest. But as gardeners know, they are planning ahead for a new year of gardening. All that remains is to wish you a very happy Christmas and New Year season from the Liphook in Bloom Volunteers.



Hanging Basket.

If you are regular readers of the Liphook Community Magazine, you may have noticed that Barbara Miller has not authored this piece. She is taking a break after writing for us for about nine years. Big thank you Barbara for all your time and effort.

REMEMBERING

As we took time to remember the service and sacrifice of those who have served our country to defend our freedoms and protect our way of life, the Liphook Branch of the British Legion and Liphook in Bloom joined forces to attach poppies to the lamp posts throughout the village. Not only are the poppies a reminder of the many sacrifices made for us, but also represent the ongoing need to support the whole of the Armed Forces community, including serving personnel, veterans, their families and the bereaved.

Liphook in Bloom began the annual poppy display throughout the village, and now places a soldier silhouette in the Millennium Bed on Midhurst Road. Terry Burns, President of Liphook in Bloom said "We began doing this several years ago and it is now an annual collaboration with the British Legion, locally. A fine bit of teamwork which we know that people in the village appreciate."

In addition to the lamp post poppies, a team of veterans led by Alan Clare installed a moving display in Bramshott Church. The area within the church provided a beautiful space for veterans and anyone

wanting to take a moment to remember the fallen and the service of veterans. Alan said "We do this out of respect for fallen soldiers and to support the work of the British Legion." Alan served in the Royal Corps of Transport and has visited military cemeteries in ten countries.



Church poppies close up.

DO FOLLOW US ON FACEBOOK

<https://www.facebook.com/LiphookInBloom/> or get in touch through our website: <https://www.liphookinbloom.co.uk/> if you would like to join us, we would love to see you.



News from the Federation of Liphook Infant & Junior Schools

In **Year R**, our youngest children are developing their personal and social skills by sharing, taking turns and learning together. They are developing the language to negotiate and turn-take. Our outside areas have been well used and the children are developing their physical strength which will help them in many other ways over the course of the year. We have been lucky to have visitors into school as well - the Year R children listened very carefully to Firefighter Meekins as he told them all about the special clothing he has to wear in order to be safe doing his job.



As an oracy centre of excellence, we work hard to provide the children across the federation with a range of opportunities and audiences to talk and listen to. This year is no exception, and the children are developing excellent communication skills.



In **Year 1**, the children have been communicating in lots of ways. In our Traditional Tales topic, they have looked for clues to name the character that was responsible for causing a mess in our community room - the porridge oats and broken chair gave them quite a big clue! Following this, they have orally rehearsed

and then written sentences to describe a range of fairy tale characters, before designing and making fruit kebabs to take to Little Red Riding Hood's grandma. The children learned how their non-verbal communication helped their partners to work out if they were tasting something sweet or sour!



The **Year 2** children have had a wonderful start to their school year. They have enjoyed weekly forest school, collaborating on mini projects and identifying trees. Their art has focused around the wonderful work of David Hockney where they have explored pattern and landscape work. They were fortunate to have an

excellent trip to Gilbert White's house for a day full of science exploring roots, shoots and fruits, all involving discussing and sharing their observations with each other and the adults that were working with them.



Year 3 have been studying the artist Carolee Vitaletti who uses bold, bright colours to paint pictures of animals. The children enjoyed researching Vitaletti and choosing an animal to paint in her style. Year 3 used a variety of brush strokes to create their fantastic paintings.



Year 4 had a brilliant time on their recent visit to The Living Rainforest, where they immersed themselves in the wonders of tropical ecosystems. Guided by expert staff and sharing knowledge that they have gained in school, the children discovered fascinating facts about the diverse plant and animal life that

thrive in rainforest habitats. Highlights of the day included close encounters with snakes, a vibrant toucan, a curious iguana, and many other exotic creatures. The excitement peaked when we all spotted the famously laid-back sloth, Cinamon, lounging high up in the trees - a rare treat that delighted everyone!

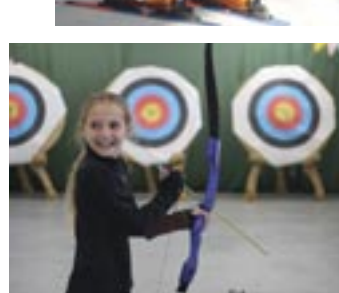


Year 5 had a fantastic time exploring the River Wey at Radford Park as part of their local river study. While investigating the sediment on the riverbed, the children discussed and described the erosion and deposition which they could see. Then they took a walk along the river and identified both human and physical features, which they could see and hear. They discovered a

variety of habitats in the trees, along the riverbank and within the park. As budding geographers, they measured the flow of the river and created detailed sketches to capture its features. It was a hands-on, engaging experience, full of discussion and communication, that brought their classroom learning to life, within our beautiful village!



Year 6 had a fantastic time at the annual residential trip to Calshot Activities Centre in the New Forest. The children successfully, faced challenges (and sometimes fears!) as they made memories and strengthened friendships over their 4 days at the centre. The looks on their faces say all that needs to be said – we are very proud of all of the Year 6 children!



CarpetBaggers

Carpetbaggers is your local family run flooring company with over 20 years' experience within the flooring trade.

We stock leading makes of carpets, Amtico, Karndean, Vinyl, Wood, Rugs and Blinds to compliment your décor.

We provide free estimates and provide a professional design and planning service.

We are conveniently located in the heart of Liphook with ample free parking so for expert advice, come and visit our showroom at:

7 Headley Road, Liphook, Hampshire, GU30 7NS.

Web site: www.carpetbaggers-liphook.com

Email: sales@carpetbaggers-liphook.com

Telephone: 01428 724449. **Mobile:** 07880 876858.

Opening Times:

Mon, Tuesday, Thursday and Friday 9.30am - 5.00pm.

Wednesday: 9.30am - 1.00pm. Saturday 9.00am - 1.00pm.



HOLISTIC HEALING FOR THE SOUL, BODY & MIND

REIKI - REFLEXOLOGY - INDIAN HEAD MASSAGE

sarajway@hotmail.com

www.glowinglotusholistichealing.com

07818 159 729

County Decorators

Based in Liphook



Interior/exterior painter & decorator with over 35 years experience providing decorating to high standards



For a free estimate contact Keith Keen:



01428 724536 - 07817 804352

countydec@gmail.com



CJ Hampshire Appliances euronics

Internet prices on the High Street



As an established independent electrical retailer we offer a wide range of products at competitive prices

We have a reputation for value, service and after sales care

You can NOW shop online www.cjhampshire.co.uk as well as phone and collect.

Experienced engineers and sales assistants with extensive technical and product knowledge.

Member of Euronics - Europe's largest buying group offering competitive prices

Friendly and efficient service.

Free quotes to replace built in appliances when ordering from us

Recommended specialist companies providing gas, aerial and electrical support



LIPHOOK: 01428 722416 - MIDHURST: 01730 816219

www.cjhampshire.co.uk



Church and Village Life

By Keith Ireland.

TEA AND COMPANY

This group was started in 2005 by Hazel Pounds as a bereavement support group but has expanded to include those divorced or separated or have partners who suffer from dementia and want company.



We meet twice monthly at the church centre on a Monday afternoon. There is no charge to attend. Our guests tend to be 60yrs + and come to socialise and make friends in a safe environment. We do not offer bereavement counselling. This is a social event.

We visit the seaside in August and musicals locally in March and October and we offer lifts to those with mobility issues.

LUNCH BREAK

This club was started in 2010 by Bob and Stella Fells as a purely social event for singles and couples, available to anybody in the village, mainly retired folk.



Our guests enjoy a hot freshly cooked two course meal followed by tea and coffee and a 30 min. talk by a speaker on topics of local or national interest.

We meet regularly on the 3rd Wednesday of each month. Lifts are available and the cost is £8 per person to cover food and speakers' expenses.

For more details on both clubs visit: liphookchurch.co.uk

15 Years of Love To Sing

By Vanessa K. Breach.

Fifteen years ago last October, Chris Booth (pianist) and I started a fun choir in Liphook called Love To Sing, that still runs in Liphook today. Through the years we have met every Wednesday evening to sing and socialise, and we have played many concerts raising funds for local causes. We have played to local nursing homes and care homes in the area, performed several shows together with The MAD Company - The Pirates of Penzance, The Mikado, HMS Pinafore and Joseph And His Amazing Technicolor Dreamcoat. We've sung at weddings, funerals, parties, Christmas Fairs, New Year's Eve Celebrations, and basically, wherever we've been invited. Unfortunately, during this time we've lost Chris, our amazing pianist, but have been able to continue using instrumental backing tracks. Also, Covid played its part in making many people wary of singing together and our numbers reduced but we're still going strong and still thoroughly enjoying our singing sessions and our concerts.

During this festive season we will be singing at the charity bazaar and Artisan market on 13th December at the Millennium Hall and at The Links on Sunday 21st December from 6.30pm.

We welcome all new members - there is no need to be able to read music or have any musical experience, and we don't hold auditions. Anybody who wants to sing with other people is valued at Love To Sing. We sing all styles and genres of music and meet on a Wednesday evening at 7.30pm to 9.30pm in Liphook Methodist Church Hall for a very informal but enjoyable evening. We are a very sociable group and anyone who joins us is guaranteed a warm welcome (together with coffee and biscuits). Just come along for a free taster session, join in or just sit and listen and see how you get on. We look forward to meeting you.

Liphook Village Christmas Market

By Jenny Woodsford.



Love to Sing Choir.

By the time you read this another successful Christmas Market will have taken place on 22nd

November in the Millennium Hall. The regular stallholders from the monthly market will have been joined by some extra seasonal stalls. These included textiles, greeting cards, home baking and preserves, Christmas themed gifts, knitted gifts, melts and diffusers, a local artist, jewellery, pyrography and refreshments.

Regular guests at the Christmas Market for many years have been our local community choir Love To Sing. Their rendition of Christmas Carols and songs during the morning really help to get us all in the festive mood. I took the photo of Love To Sing at last year's market when we all enjoyed their contribution which included some Christmas songs that we could all sing along too whilst enjoying a cup of coffee.

It's not too late to support local craftspeople and get some last-minute gifts as the last monthly market of 2025 will be on 13th December along with a local fund raising bazaar and another visit from Love To Sing. Come along to enjoy the festive season and get some Christmas gifts.

From Next Year The Village Market will be run by Bramshott and Liphook Parish Council. For more information please see advert on page 8.

Showcasing a Memor

A clear wintery sky on the night the clocks go back provided the backdrop for the 2000 revellers from the parish and surrounding areas during this year's Liphook Carnival procession.

Carnival favourites, the Batala Samba Band from Portsmouth, led the evening's entertainment with their distinctive rhythmic drum lighting system and colourful costumes, getting the party atmosphere going. They kept the crowds entertained all evening during the procession along Portsmouth Road, Station Road and Midhurst Road, before returning to the Square.

Vern Pitt, Liphook's newly elected Town Crier, made his first appearance keeping revellers informed of upcoming proceedings.

The royal float, carrying this years Carnival Queen Amber, Princess Libby, and attendants Georgie, Summer and Ava-Rose arrived to tremendous applause. Amber was modelling her stunning evening dress donated by Hindhead's Bridal and Prom boutique "Your Little Secret". She was crowned by 2023 Carnival Queen Ali Vaughan.

More entertainment was provided by these first timers - the Bournemouth Carnival Brass Band - all dressed in Spiderman costumes.

Liphook Guides Space ship showed a strong out of this world presence with 36 members all reaching for the stars, winning them first place in the children's float category. The Scouts came second with their magic Harry Potter float, casting spells across the crowds.

As ever the Forrest Lane Friends did not disappoint with their Three P's Saloon Float (Peter, Paul and Pip), depicting "Wild Westhook" and all its villains, winning the Best Street Award.

The MAD Company showcased all of their main characters from recent pantomimes on their float, winning first place in the Clubs, Groups and Organisations category, while first time participants River Wey Trust, who highlighted the return of water voles to the River Wey, came second. Long time supporters of the Carnival, Liphook in Bloom, were presented with the Bronze Award.



Carnival Royalty.



*Crowning
Carnival
Queen.*



*Batala
Samba
Band.*



Town Crier.



Bournemouth Carnival Brass Band.



Girl Guides.



Scouts.



Three P's Saloon.



Three P's Saloon.

able Liphook Carnival

By Gabrielle Pike.

Rake Activity Club's float was all about the Toy Story and its instantly recognisable characters like Woody and Buzz Lightyear, winning them the Committee Choice award.

The Best Newcomer trophy was given to Jason Hooker, who took part in the procession with his Focus ST Sonic car, which he showcases at events, raising money for Cancer and Alzheimer's charities, amounting to £7,000 this year alone.

The Best on the Move trophy was presented by Carnival Chair, Dianne Heath, to the Disking Star Wars float, a family owned business that has been serving Liphook and neighbouring areas for over 30 years, who turned out with two futuristic cars, as well as depicting characters from Darth Vader to Luke Skywalker and Princess Leia.

Showing off their mighty steam engines and partying along the route were four engines from Hollycombe, with Wallace and Steevens winning first prize and the Tractor Float second prize. Third prize out of four was for the Tractor named Florence.

Driven by Juliette Hooker she was also presented with the Best Illuminated of the night trophy by Carnival chair Dianne Heath.

Despite a call out to Lindford, Liphook Fire and Rescue came back just in time to take part in the procession, showing off their new fire engine after taking possession of the state-of-the-art truck in May.

Revellers were then invited to the spectacular fireworks events sponsored by Old Thorns Golf and Country Club, held at the recreation ground and organised by Paul Wright of Genesis Motors.

Carnival chair Dianne Heath, who took over last year, said: "This year's carnival was a night to remember - full of energy, tradition, and community spirit. As the sixth oldest running carnival in the UK, we're proud to keep it thriving thanks to our amazing volunteers and generous sponsors who make it all possible." They include the AMK Group, Grayshott Pottery, One Six Events as well as many local businesses, Bramshott and Liphook Parish Council and East Hampshire District Councillors.



Mad Company.



River Wey Trust.



Liphook in Bloom.



Rake Club.



Jason Hooker.



Disking.



Florence the Tractor.



Florence.



Bill Moulard, EHDC Councillor, Greg Stafford MP, Liphook, Bordon, Farnham, Sally Cameron - Bramshott & Liphook Parish Council chair.

BURLEY GEACH solicitors



Your leading local law firm with a reputation you can trust based on years of steady growth and client recommendation.

Liphook 01428 722334
Haslemere 01428 656011
Petersfield 01730 262401

Further information and full contact details are available on our website:

www.burleygeach.co.uk



HERE WHENEVER YOU NEED US

Hamptons Liphook

10 The Square, Liphook, Hampshire GU30 7AH
Sales: 01428 722031
liphook@hamptons.co.uk
hamptons.co.uk

Hamptons

THE HOME EXPERTS



SMALL WORLD VET CENTRE



PHILL ELLIOTT BVM&S MSc MRCVS

32 STATION ROAD, LIPHOOK GU30 7DR T: 01428 788659
smallworldvets.co.uk

**'Independence' is more than a word...
it's what gives us wings!**

Your pets will always come first - it is what we are here for, after all - but we want to go further and recognise that the health of our pets, ourselves and that of our environment are all linked - 'One Health'.

Caring for the environment is not traditionally the role of a veterinary practice, but is a foundation stone of Small World Vet Centre - the clue is in our name! Faced by a biodiversity and climate crisis, this has never been more important.

From energy efficiency and minimising waste, to promoting green pet ownership, and raising money for conservation projects... there is no aspect of our locally-owned, independent business that is not tilted towards this aim, without ever compromising the standard of service we provide or adding to our fees.

Find out more here



£10 OFF YOUR FIRST CONSULTATION WHEN YOU REGISTER WITH THIS ADVERT. QUOTE LCM0124



Small World Vet Centre



@smallworldvets



Small World Vet Centre

YOUNG TALENT AND FAMILY RIVALRIES SHINE

Liphook Autumn Show

By Anne Govier and Sally White, Show Secretaries. Photos by Brian Simmons and Malcolm Harvey.

Archie Gooding (age 13) became the youngest ever winner of the Cookery Cup in the Liphook Horticultural Society's Autumn Show held on Saturday 6th September. He entered all the classes and received firsts for his rustic loaf and date and walnut cake along with seconds and thirds for the other classes beating the competition including his grandmother, Lesley Hollands. Well done Archie!

The Society were also pleased to see that Malcolm Harvey came first in all three classes in the flower arranging winning the Floral Cup. His entry in the "Hot Hot Hot" class was stunning as was his entry in the "Wind Chimes" class. He soundly beat his wife Kim-Britt into second place.

The Show was a success with the tables full of colorful veg, beautiful flowers and scrumptious apples and pears - all despite

the weird weather of 2025 (first bone dry, then almost floods).

Other cup winners were Ian Haussauer winning best in show for his wonderful basket of veg, and the Bob Bell trophy for being the most successful in the vegetables, wife Ann winning best in show for the flower classes and other cups. Christine Hill won the W.A. Coyte trophy for her pot plants. Tim Wayne was delighted to win the Novice Cup with his mixed dahlias.

Children's classes this year were a gingerbread man, undersea collage and own made up Lego model which proved very popular with ten children taking part. Winners were Chloe in the under eight section and Milly in the 8 to 13 category.

Thanks go to all those who entered and made the Show a success.



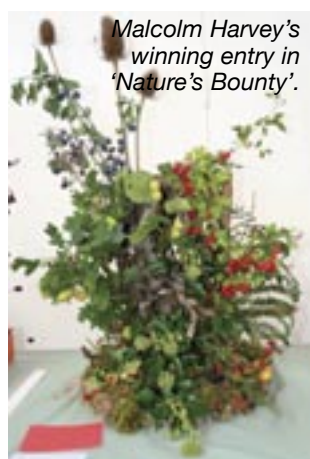
Admiring the beetroot.



Fruit & flowers (sun & shade).



Dahlias.



Malcolm Harvey's winning entry in 'Nature's Bounty'.



Liphook Horticultural Society Committee at their Autumn Show.



Vegetable Classes.



John Gilbert won Best Vegetable with these Cauliflowers.



Ian Haussauer's Basket of Vegetables was the best exhibit in the show.



Hot Hot Hot in the Floral Art Classes.



Sunny Flowers.

C.J. Sheppard

Building Services

- Extensions
- Alterations
- Renovations
- Roofing
- Carpentry
- Qualified Plumber
- Kitchen and Bathroom Fitting
- Tiling
- Painting & Decorating

*References available
Please call for a free no obligation estimate*

Tel: 07968 452126 / 01420 478383
Email: cjsheppard79@btinternet.com
 79 Liphook Road, Lindford, Hants, GU35 0PG



Downsizing?
Selling up?
Clearing out?
Too many books?

I buy interesting books and give them a good home.

Books bought and sold
Let me find that elusive book for you

Ring Paul Robinson
Amazing Book Company
07968 429227



We at **Traviss & Co** believe in building genuine relationships. Our commitment is simple: understanding, supporting, and serving your unique accounting needs. We're beside you, whether you're already in business, starting a business or navigating personal tax intricacies.

As well as providing traditional accounting and taxation services for businesses and individuals, we also offer a range of support services, including:

Payroll & automatic enrollment pension filing
 Bookkeeping
 MTD compliance
 Software training



WHY NOT CONTACT US AND ARRANGE A MEETING?

TRAVISS & CO CHARTERED CERTIFIED ACCOUNTANTS

Office: Newtown House, 38 Newtown Road, Liphook, Hampshire, GU30 7DX
 t: 01428 724001 e: info@traviss.com w: traviss.com



LIPHOOK TRAVEL



**TRAVEL PROFESSIONALS
A COMPETITIVE PRICE WITH
EXCELLENT ADVICE**

**INDEPENDENT FAMILY BUSINESS
ESTABLISHED FOR OVER 50 YEARS
WITH YOU EVERY STEP OF THE WAY**



22 The Square
Liphook
Hampshire
GU30 7AH

Tel: 01428 723525

Email: info@liphooktravel.co.uk
 www.liphooktravel.co.uk



HEALTH AND WELLBEING

Acupuncture South Downs in Liphook

By Jenny Woodsford with Ben Carrigan.



Ben in his treatment room.

I recently had the pleasure to meet Ben Carrigan, a fully accredited acupuncturist, who, as an extension to his busy London practice, has recently opened his Acupuncture South Downs clinic in Chiltlee Manor, Liphook.

Acupuncture is not just a treatment

modality but a doctrine of medicine, rooted in more than 2,000 years of continuous clinical experience and observation. It relies on the placement of very fine needles, which are inserted at certain sites throughout the body for therapeutic or preventative treatment. Classical acupuncturists believe that the body's vital energy, qi (pronounced chi), flows along specific meridians throughout the body; essentially, if the qi is balanced, the person is healthy. Depending on the style of acupuncture, needles are placed on certain points along these meridians and then manipulated by the acupuncturist either manually or using low level electrical stimulation depending on the type of acupuncture. Ben practises classical acupuncture, which does not involve electrical stimulation.

Acupuncture is particularly effective in the treatment of pain and is recognised by NICE guidelines in the treatment of chronic primary pain, migraines and headaches. It is particularly effective in the treatment of conditions such as:

- Headaches and Migraines ● Fibromyalgia ● Osteoarthritis ●
- Tennis elbow ● Low back pain ● Nausea ● Addiction ●

However, as a holistic medicine, Ben sees many patients in the treatment of women's health and fertility, autoimmune conditions, mental health, stress and anxiety, digestive issues and sleep disorders - essentially anything you would see your GP about.

Because of its age, acupuncture is rooted in a classical medical language that developed through careful observation of the body in relation to the environment we live in. Terms such as yin, yang and qi may sound unusual when compared with modern Western biomedicine, but within this holistic framework, they provide a highly practical template for understanding, diagnosing and treating the whole individual, including the interconnectivity of different systems. Despite the language, therefore, the system itself is inherently pragmatic, treatment-focused and individualised to each patient.

It is also worth noting that there are many different types of acupuncture practised today. In the UK, regulation is problematic, so it is particularly important to find a practitioner who is fully accredited. For example, members of the British Acupuncture Council are the only acupuncturists whose register is accredited by the Professional Standards Authority (PSA), giving patients confidence in their training, professional conduct and safety standards.

Previously, Ben trained as a musician and worked as a session musician in the Film and TV industry. At a certain point, he developed a condition called hyperacusis (sensitivity to noise) alongside tinnitus. Having been told by conventional Western medicine that he would have to live with it, Ben turned to other approaches. Through his own experience, he found that acupuncture within the Chinese medicine model brought significant results, and within three weeks he was back to normal. Inspired by this transformation, he went on to study for a BSc in Acupuncture, training for three years before opening his main practice in Southfields in London 10 years ago.

On consulting Ben for the first time, he takes details of the whole body and health in order to make a full diagnosis. He then looks at re-balancing the whole system. Everybody has to be treated differently not, like in Western medicine, treating the symptoms, but looking into the cause and re-balancing the qi accordingly.

Ben moved to the Liphook area last year from London where he continues to work in his multibed practice in Southfields. On moving down, Ben wanted to work closer to home and therefore opened the new Liphook clinic in March 2025. He currently splits his time between the Liphook and London practices. He strongly appreciates the calm and quiet at Chiltlee Manor. His new practice has quickly gained in popularity and success locally, and Ben is looking to increase his hours in Liphook. He is striving to take part in the community and, in particular, always happy to open the conversation with other alternative health practitioners locally.

Website: <https://acupuncture-southdowns.com>

Email: hello@acupuncture-southdowns.com

Phone: 01428 731 175

New Opportunity

Liphook Magazine needs a **Minutes Secretary** to attend four Committee Meetings and the AGM each year which are all held in the afternoon. For this post you will need to prepare the agenda, take and write up the minutes and circulate them to the committee.

For more information, please email our Chairman Roger Miller at: liphookmagazine@gmail.com.

Magazine Writer

Anyone out there who is longing to see their words in print but hasn't yet had the opportunity to do so?

Well, this is your chance.

The magazine needs a new writer to join our team of five.

We meet before each edition to plan the items we are going to write about. When you join us, you will receive a gentle introduction to the art of writing for the magazine and plenty of encouragement and help.

The subjects you write about are your choice but we can provide ideas if needed. Give it a go, email our Editor: fay.lcm@outlook.com today.



CHURCHER'S
COLLEGE

Frosty days & future stars

Winter Wonderland Open Morning

For families with children aged 3-7 years

Saturday 6 December 9am - 11am
Junior School & Nursery, Liphook

Discover our Junior School with Frosty's
Festive Challenge, crafts, campfire,
s'mores and more!

Join the fun! Book today at ChurchersCollege.com

Join the fun!
Book today



Genesis

AUTOMOTIVE

The Total Motoring Solution



 **RMI**

- **Servicing and repairs to all makes of vehicle**
- **MOT Testing Centre**
- **Electronic Diagnostics**
- **Exhaust and battery centre**
- **Unbeatable prices on all makes of tyres**
- **Full air-conditioning service available**

CALL NOW ON

01428 727117

Unit A1, Beaver Industrial Estate
Midhurst Road, Liphook GU30 7EU

HAMPSHIRE AND ISLE OF WIGHT POLICE AND CRIME COMMISSIONER DONNA JONES VISITS

The Stable Boxing Club

By Gabrielle Pike. Photos by Debbie Curnow-Ford & Gabrielle Pike.



Debbie Curnow-Ford, Jack Castle and Donna Jones.

Local professional Jack Castle, who has defeated super lightweight champion Darren Hamilton, has opened a not-for-profit amateur boxing club at the Church Centre in Liphook, which opens its doors three times a week, offering young people low cost training, the chance to keep fit and make a real difference to their lives.

Jack has 12 professional fights under his belt while he was a member of Camberley and Epsom Boxing Clubs.

"Everyone is welcome to come along", he says.

"I wanted to offer young people access to training facilities at an affordable cost of £1.60 per session which works out

at £20 per month for 3 sessions a week. With it being a not-for-profit club, I can apply for support and funds from the local council to help finance the equipment and insurance. There are no local amateur boxing clubs in the area and we have already attracted a lot of young boys and girls from Liphook and the surrounding areas since we opened in February, who love coming along to our training sessions. They can start at age seven or eight."



Angela Glass, Jack Castle and Donna Jones.



something to do which they enjoy. Sport is so important for young people. It stops them getting bored and gets them off the streets. As Police and Crime Commissioner, I can give grants to clubs like this one to help combat anti-social behaviour."

To find out more about the Stable Amateur Boxing Club call Jack Castle on: **07517 701452.**



The Recreation Ground

By Gabrielle Pike.

Liphook Football Club as well as the Bowls and Tennis Clubs were delighted when Donna Jones, Hampshire and IOW Police and Crime Commissioner, recently paid a visit to Liphook's Recreation Ground to meet Bramshott and Liphook's Police Liaison representatives and find out more about ongoing graffiti and antisocial behaviour.



She met with Jenni Weston, Vice Chair of Liphook FC as well as Mike Gunton, Captain of Liphook Bowls Club, discussing their problems during a walk about. Also present were Jane Sawyer, clerk of Bramshott and Liphook Parish Council, her deputy Geraldine Sheedy, Cllr. Jon Woodrow as well as Cllr. Debbie Curnow-Ford and Hampshire District Councillor Angela Glass, who were pointing out other recurring issues in the parish including speeding and congestion.



Donna Jones was keen to prioritise and address some of these problems through her own department, praising the football club for providing sports facilities for young boys as well as an increasing number of girls.

The Car Network

By Lesley Howes.



When local businesswoman Lesley Howes, known as the trusted Car Lady, founded The Car Network back in 1986, her goal was simple - to make life easier for businesses trying to find the right car or van to lease for their work. At the time, the idea of an Independent Leasing Broker was still new, and being a woman in the motor trade was almost unheard of, let alone running her own business from

home. But Lesley built a business based on trust, personal service, and genuine expertise.

"Many of my early customers were local business owners and tradespeople who just wanted someone reliable to sort it all out for them," Lesley explains. "They were fed up with wasting time visiting multiple dealerships, getting different prices and mixed advice. I realised there was a better way."

Nearly forty years later, that personal approach remains at the heart of The Car Network. From small businesses with one van to growing local companies with small fleets, Lesley and her team help customers lease the right vehicles at competitive prices without the hassle. Her long-standing industry relationships means she can source any make or model and give independent advice that is based solely on what is best for the customer.

"Our customers benefit from a lifetime of knowledge, experience

and contacts we know and trust," says Lesley. "We take care of the details so they can focus on running their business."

More and more local businesses are now exploring the switch to electric vehicles, and Lesley has been helping them make the transition with confidence. Electric cars and vans don't just offer economical, smooth, quiet driving, they also contribute to cleaner air across our towns and villages by producing zero tailpipe emissions.

For business owners, there is a financial bonus too as drivers of electric vehicles currently enjoy much lower "Benefit-in-Kind" tax rates, making them a very smart choice for Company Directors and company car drivers alike. Lesley helps customers weigh up running costs, charging options, and the practical benefits, making sure each business finds the right fit.

As the seasons change, Lesley is quick to remind drivers that a few simple checks can make all the difference in winter conditions:

- Check your tyres for tread depth and pressure - good grip is vital.
- Top up washer fluid with a proprietary screen wash to prevent freezing.
- Carry the essentials: de-icer, scraper, torch, and warm clothing.
- Slow down and leave extra space between you and the car in front, as braking distances can increase dramatically in the wet or on ice.

Lesley and The Car Network team are always happy to help with friendly advice and expert knowledge. For more information call: **01428 707993** or visit: **www.thecarnetwork.co.uk** or: **www.electriccarlady.co.uk**

LIPHOOK'S FOREST'S HUGE HARVEST

Mast Year 2025

By Eva (Junior Writer).



For the sleepy season of autumn, the forests have never seemed so alive. Leaves crunch beneath your feet, but do not lay solitary on the deep yellow-orange carpet. Keeping them company are a flurry of acorns, chestnuts, apples, beechnuts and all other sorts of goodies for man and beast alike. Blackberries speckle the bushes, spurts of purple in a slowly browning world. This rare hyper production of fruits and nuts

is known as a 'mast year', but why have our woods sprung into action? This year, many woodland monitors across southern England are reporting a significantly higher-than-normal acorn/seed fall for species like oak and beech, and the reason is far more interesting than you would expect.

CLIMATE & SURVIVAL: CAUSES OF THE BUMPER CROP YEAR

The truth is that scientists can't be sure what truly triggers mast years, one of nature's wellkept secrets. However, forestry experts

theorise that due to the cross-species synchronisation of the mass seed production, it is likely to be triggered by a specific set of weather conditions. For example, 2025's warm, dry spring allowed for a high pollination rate, leading to a large number of flowers maturing into fruits and nuts. This combined with the UK's hottest summer on record put stress on our trees, causing them to mast as a survival strategy. Every 5 - 10 years, trees produce more crops than predators could possibly eat, leading to a significant amount of seeds germinating, therefore guaranteeing the reproduction of the species. An alternative, more underground theory is that our woodlands coordinate mast years through fungal or chemical signals, a fascinating hypothesis being currently researched.

HOW WILL THE MAST YEAR AFFECT OUR GARDENS AND GREEN SPACES?

Our furry and feathered friends



will without a doubt thrive this winter. In the cold months to come, badgers, voles, mice and other small mammals will feast on plentiful stores of nuts, causing a spike in their populations. This will then have a knock on effect on predator populations, boosting numbers of kestrels, stoats, foxes and owls. Other birds like jays as well as deers will benefit from the harvest, along with a large food supply for moth larvae that feed on nuts. All together, charming sights of busy creatures can be seen in

every nook of greenery this winter!

The mast year is our very own Christmas gift from the natural world, sprucing up the bitter winter months with a vibrant handful of life. Despite the harsh temperatures, don't let this present go to waste! Take a moment outside, witness the sparkle of life hidden in the dark; discover, enjoy, and savour this once in a decade event!

UPDATE FROM East Hampshire District Council

LOCAL GOVERNMENT REORGANISATION

At Full Council on Thursday 17th July, a decision on the preferred option for Local Government Reorganisation was submitted for consideration by all District Councillors.

The purpose of the report was to allow Council the opportunity to consider and commend to Cabinet the recommendations that had been prepared by officers, namely that East Hampshire District Council's preferred option, aligned with that of Hampshire County Council, is the creation of four unitary authorities for Hampshire and the Solent.

The North option would consist of Basingstoke and Deane, East Hampshire, Hart, Rushmoor and Winchester. This decision was based on clear evidence and facts, which would create a strong new unitary council. The approach was grounded in robust evidence, financial realism, and the decades of experience in Hampshire County Council, delivering crucial local services to residents, schools and communities across the county.

The South-West option would consist of Eastleigh, New Forest and Southampton.

The South-East option would be Fareham, Gosport, Havant and Portsmouth.

The Isle of Wight would form its own unitary authority.

The Leader of the Council, Cllr. Richard Millard, introduced the report and the recommendations, which were seconded by the Deputy Leader, Cllr. Andy Tree.

The Chairman opened the debate and invited group leaders to speak on the item first, before opening the debate to all Members. Members from all parties spoke and voiced their opinions on the option that was proposed. Following the debate a request was made for a recorded vote, in accordance with Standing Orders, and the vote was carried 23 for, 8 against, and 2 abstentions, and it was resolved that Council recommend the report and appendices to Cabinet, that took place on Friday 18th July, for decision. At Cabinet on the 18th July, the recommendations were unanimously approved.

An online programme of engagement and consultation started on the 21st July and ran until the 17th August, offering residents the opportunity to comment on the proposals.

Subsequently, following further amendments to the documents, Full Council on Thursday 25th September approved the submission, with Cabinet ratifying this on Friday 26th September, when the proposal was submitted to Government. It is thought that the final decision on the proposals from across the country will be made by Government in January 2026.

PLANNING

Proposed SANG at Iron Hill. On the 10th July, the South Downs National Park Authority planning committee considered the application from Bloor, at Chiltley Lane Poultry Farm, to provide a Suitable Alternative Natural Green Space, (SANG), at Iron Hill. After much deliberation, following representations against the proposal from Cllr. Bill Mouland, and members of the South East Liphook Residents Group, the committee voted in favour of the proposal, with the vote being six in favour, four against and two abstentions. The application for the development of up to 67 houses at Chiltley Lane Poultry Farm came before the EHDC Planning Committee for decision in September and was approved.

Largely as a result of the Government's doubling of the housing targets for East Hampshire the Planning team is handling a high number of major residential planning applications, (schemes above ten dwellings) with around 30 large scale proposals across the District. This is on top of a large number of non-major applications, (approximately 500). The backlog in validations, caused through the introduction of the new Idox Cloud computer system, has been reduced to three weeks.

Following a four-week consultation, the planning policy team, in collaboration with housing colleagues, has produced an Affordable Housing Supplementary Planning Document (SPD). This sets out clearly what the Council expects from development proposals, in terms of affordable housing provision. It has been considered by both the Planning Policy Committee and Cabinet. The document can be found on EHDC's website.

ELECTIONS

It is anticipated that Mayoral elections for a mayor for the new unitary authority, will take place next May 2026. Donna Jones, the present Police and Crime Commissioner for Hampshire, has been chosen as the Conservative candidate. Before then, under the Election Act 22, a renewal of absent votes has begun which will involve writing to 15,000 postal voters asking them to renew their postal vote, before the 31st January, 2026.

The EHDC election team have been in talks with other Election teams across Hampshire to discuss the best way to prepare for votes for 16 year-olds.

Please do not hesitate to contact any one of us, should you need help with anything related to the District Council. We still have some money left in our grant pots, so do not hesitate to tell us whether you need help with a project.

Cllr. Angela Glass angela.glass@easthants.gov.uk
Tel. 07790 234448

Cllr. Bill Mouland bill.mouland@easthants.gov.uk

Cllr. Nick Sear nick.sear@easthants.gov.uk

SK Electrical & Security Systems Ltd

Website: www.skelect.co.uk

Email: info@skelect.co.uk

Address: Unit 9, Beaver Industrial estate, Midhurst Rd, Liphook GU30 7EU



We have over 38 years of experience
in providing electrical services,
call us on:

Tel: 01428 725536

- ☐ Electrical installation,
test and inspection
- ☐ Security system installation
- ☐ Heating/Ventilation



Aster Daisy Nursery

Quality Day Nursery and Pre-School
in Rake for ages 3 months to 5 years

Superb historic location,
forest school chalet,
library, sensory space, art
studio, bespoke soft
play house and



Arrange your visit
01730 858480
mydaisynursery.com

Liphook Skin & Beauty

Advanced Cosmetic Procedures

Skin Tag Removal • Thread Vein/Wart/Sun Damage
Removal • Electrolysis

Treatments

Manicures & Pedicures • Shellac & Gel Polish •
Hot/Strip Waxing • Female Intimate Waxing
Massage • Lash Lift • Eyebrow Tinting & Shaping
Men's & Women's Waxing

Laser Hair Removal

01428 288182

www.liphookskinandbeauty.co.uk

22 Station Road, Liphook,
GU30 7DR

Free Parking • Gift Vouchers

NEW

SKINSTORM
6 STAGES TO THE
PERFECT SKIN

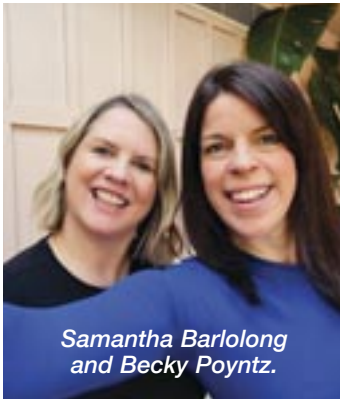


Facials

DIBI Milano • Skin Analysis
Golden Radio Frequency • CACI
Synergy • Crystal Clear COMCIT

Planet Dance & Fitness Academy

By Samantha Barolong.



Samantha Barolong
and Becky Poyntz.

We started our dance business 'Planet Dance & Fitness Academy' in Liphook in December 2000. Within a few weeks we had a loyal following of keen students which was exciting.

We started off teaching street dance to children from 2½ years right up to adults on Monday and Thursday evenings. Our classes have

always been great fun, and we've had a loyal client base for the 25 years that we've been teaching at the Millennium Centre.

In that time we have put together many showcases which have always been a huge success. Our first was at the Millennium Centre, but unfortunately, we were struck by a power cut just as the performance started. Amazingly and in true showbiz fashion the show had to go on, so some parents and friends drove their cars around the back of the hall which was laid out differently in



those days and we danced by headlights. The atmosphere and support from everyone was wonderful and the children didn't have to suffer disappointment. After about 20 minutes the lights came back on and we were able to continue as planned.

From then our academy grew and our students have had the opportunity to dance in a professional theatre with full staff and audiences of 500 at a time. We were also asked to perform at The Lord Mayors Show in London for the Mayor's float and separately another performance at the London Palladium.

We have seen many of our students go on to shape their own dance careers becoming teachers and performers. We have always prided ourselves on the fact that our dance academy is inclusive for all no matter your ability. Dance for us is about expressing yourself, building confidence, but most of all having fun. Now that we have hit the 25-year mark we are seeing our past students bring their own children to us to be taught now. There is nothing that makes us prouder than seeing our students enjoy the love of dance, and being able to feel part of something - our dance family.

If you want to take part in any of our classes please get in touch with us via our website: www.planetdanceacademy.co.uk

FROM CRÊPES TO CONVERSATION

Discovering Languages at Churcher's

At Churcher's, languages are brought to life through creativity, curiosity, and cultural discovery. From their very first lessons, pupils are encouraged to see language learning not just as a subject, but as a window into the wider world.

French and Spanish are taught with a strong focus on communication, confidence, and fun. Pupils learn through songs, stories, drama, games, and hands-on experiences that make language meaningful and memorable. Whether ordering breakfast in a mock café, performing a short play, or trying traditional foods, pupils enjoy authentic opportunities to use their language skills in real contexts.

Clubs and events across the school further enrich language learning. Our popular French and Spanish Clubs give pupils a chance to explore culture through cooking, crafts, and music - from tasting crêpes and tortillas to dancing to Spanish pop hits. The Day of Languages is another highlight, bringing the whole school together to celebrate global diversity and inspire a love of learning about different countries and customs.



French cafe.

SublimePilates

CONNECTING BODY & MIND



CLASSICAL
REFORMER PILATES
& CLASSICAL
REHAB PILATES.

PRIVATE & SMALL
GROUPS OF THREE.

EXPERT TUITION
IN AN INTIMATE
SETTING.

JOIN OUR
FRIENDLY WELLNESS
COMMUNITY.
QUOTE "LMAG"
FOR 25% DISCOUNT
ON 1ST CLASS.

CONTACT DETAILS -

45 HEADLEY RD, LIPHOOK GU30 7NS.

EMAIL: AMANDA@SUBLIMEBODYMIND.COM

PHONE: 07803 032463

WEB: SUBLIMEBODYMIND.COM

OLSON PET CARE

Caring for your beloved animals in the comfort
of their own home...



PROFESSIONAL PET SITTING SERVICE

CATS & SMALL DOMESTIC ANIMALS

LIPHOOK, HASLEMERE, FERNHURST, BEACON HILL, HINDHEAD, LISS, CREATHAM,

PETERSFIELD, PASSFIELD, BRAMSHOTT, COMFORD, HEADLEY, LINDFORD

GRAYSHOTT & SURROUNDING AREAS

TRUSTED, RELIABLE, EXPERIENCED, FULLY INSURED

Tel: 07713 929 529

Email: sumiolsonpetcare@gmail.com

Website: www.olsonpetcare.com



Loving care when
you're not there...

JULIE HARRIS FOOTCARE SERVICE



Trained and
Recommended
by Age Concern



Enhanced DBS
certified foot
care specialist

This home visit service is ideal for those who find
it difficult to cut their own toe nails.

I've been professionally treating for over 15 years,
dealing with simple to complex toenail issues.

I will cut and file your nails and reduce any hard skin.
Finishing with a relaxing, moisturising foot massage.

£28 for one person

OR

£48 for a couple

CALL ON : 07932 510855

1st Advanced landscapes Ltd



SUPPORT
Local
BUSINESS



Create your idyllic outdoor space
with expert hard landscaping,
driveways, patios, stone & brick walls,
new lawns, drainage & full
garden design projects.

Quality craftsmanship from a
trusted local business.

- Business established in 2012
- Member of Checkatrade since 2014
- 5 year guarantee on workmanship
- £2m Public Liability insurance with AXA



01428 606763 or 07798 811 941



www.1stadvancedlandscapes.co.uk

Whispers, Tower Road, Hindhead, GU26 6SL



Plan your garden
project with us early

Voles in the Wey

By Alistair Young.



A quick health check before putting the vole into the release pen.

In an ambitious programme to bring water voles back to our river, the end of August saw the completion of the first phase in the South Wey with the introduction of nearly 200 water voles to six selected sites.

Britain's fastest declining mammal, the water vole has been declared locally extinct in our river catchment, suffering from both reduced habitat

and increased predation. Following the model of the Waterlife Recovery Trust which has achieved remarkable success in East Anglia and Lincolnshire, the project group has been led by the South Downs West National Trust and the Environment Agency, and includes the River Wey Trust, and South East Rivers Trust.

It is the first in a programme of reintroductions over the next two years which aim to provide a sustainable population of water voles that can breed and flourish, repopulating 1000 square kilometres of the River Wey catchment, from the South Downs to the Thames.

For the South Wey this reintroduction is a step towards correcting the imbalances which have led to a degrading river ecosystem and help nature recover. Water voles play an important role in the biodiversity of riverside ecosystems. They are a source of food for struggling predators like barn owls and otters. Where they graze on grasses and rushes, they help reshape habitats and create space for rare plants to grow. Yet during the 20th century, the population of the water vole in England declined by 93% and there has been a further rapid decline since 2000.

Once regularly spotted at the riverbank, the distinctive 'plop' as they enter the water was a familiar sound for past generations. One of the key reasons for this decline is predation by North



River Wey Trust volunteers, National Trust staff and volunteers, and Derek Gow Team members preparing the release pens.

American mink, introduced by fur farms in the 20th century. Water voles and numerous other species of wildlife such as kingfishers and sand martins suffered dramatically as a result, and managing this has been an important part of the preparation.

By taking a positive approach to these problems, each doing a little, shows how individuals, organisations and communities working together can make change happen. The most common reaction to passers-by when seeing the volunteers at work has been 'oh good, when will this happen?' and often 'how can we help?'. We are all more aware of the environment, and anxious to help. It is with these and similar projects that the Trust and similar organisations give opportunities to be involved, and the benefit of being part of this work.

The project has been funded by the National Trust, the Environment Agency's Water Environment Improvement Fund, and the Black Down and Hindhead Supporters, with a breeding programme by Derek Gow Consultancy.



One of our new neighbours.

Green Oak Carpentry Company

By Emma Lee.



Rob and Jamie.

Next year marks a proud milestone for The Green Oak Carpentry Company, the Hampshire-based oak framing specialists who have been shaping beautiful homes,

barns and garden buildings across Hampshire, Surrey, Sussex and beyond, for almost 30 years.

Built on traditional craftsmanship, care and community spirit, the business has grown from humble beginnings into one of the region's most trusted names in oak construction. From beautiful bespoke homes and characterful extensions to intricate conservation carpentry and specialist structures, each project reflects the company's enduring commitment to quality and sustainability.

"For 30 years, we've poured our heart into every project," says Jamie Croucher, Green Oak Director. "It's wonderful to take a step back and celebrate what we've built - both in the physical sense and as a team."

As part of the celebrations, the company is hosting a landmark 'festival style' event, bringing together like minded local professionals to celebrate shared values, strengthen partnerships and showcase the beauty of oak framing. They will be kicking off their birthday year in January with the announcement of an exciting new partnership, followed by a fresh new look. The team will also be heading over to France later in the year to visit the sustainably managed forests where their oak is sourced, reconnecting with the origins of the material at the heart of their craft.

"Oak is at the centre of everything we do," adds Rob Kennard, Green Oak Director. "Understanding where it comes from keeps us grounded in our values of quality and sustainability."

UPDATE FROM Bramshott & Liphook Parish Council

TOWN CRIER

In the last Community Magazine, we introduced you to our new Town Crier, Vern Pitt. We wanted to share a new photo of Vern in his livery.

By the time you read this article, Vern will have performed his first 'cry' at the Liphook Carnival, and we hope you saw - and heard - him there.



LITTLE REC SCOOTER TRACK

You may have noticed building work going at the Little Rec during September and October. This was to complete a new scooter track for young children. The track should be completed by the time this article is published, and we hope that children and young families are enjoying this addition to recreation options available for our youngest residents.

We are always keen to hear ideas from residents about recreational facilities in the parish, so please do talk to us by either contacting us using the details below or come along to one of our meetings which are detailed on our website.

PUBLIC TOILET DOORS

We have recently upgraded the doors to our public toilets in the Midhurst Road car park. I'm sure you'll agree these look a lot smarter and have improved the facilities offered.



GRANTS

Bramshott & Liphook Parish Council has a limited amount of funding available to support charities and organisations that

serve our Parish. We are pleased to announce that the application window for grants for the year 2026/27 is open but only until 15th December 2025.

You will find our current Grant Policy and Application Form in the Accounts and Finance section of our website or contact us for more information. We look forward to receiving your funding request.

LIPHOOK MILLENNIUM CENTRE

We continue to offer event spaces at our Millennium Centre for parties, fitness classes, voluntary organisations and business meetings. Please visit our website www.liphookmc.co.uk for further information.

BAMBOO REMOVAL IN RADFORD PARK

If you have visited Radford Park over the last few weeks, you might have noticed some extensive works being carried out to remove a large swathe of bamboo that was planted many years ago. Bamboo is an invasive species, so its removal is a careful process. The work will now be monitored annually for a few years to ensure the bamboo does not return.

HOW YOU CAN GET INVOLVED

The parish office is open from 10am-1pm Monday to Friday, and residents are always welcome to pop in with any concerns, or you can contact us using the links at the end of this article. You can find us at the entrance to the Midhurst Road car park.

You are also welcome to attend any of our council or committee meetings (details on our website) and there is an opportunity to speak during the meetings.

Email: clerk@bramshottandliphook-pc.gov.uk

Telephone: 01428 722988

Website: www.bramshottandliphook-pc.gov.uk

Facebook: facebook.com/bramshottandliphook

FRIENDS OF THE SOUTH DOWNS

Young Adults Free Membership



Young Adults in Liphook may be interested to hear of a new free membership for those aged 18 - 30 which was recently launched by the Friends of the South Downs. The aim is to broaden and expand the membership base and strengthen community engagement among Gen Z. By opening up its membership, the Friends hope to hear from a more diverse audience and respond to the

growing concerns posed by the climate crisis among young people.

David Green, Chairman of Friends of the South Downs commented, "Young Adults must be given the chance to influence what we do. We want to create a vibrant and inclusive member-based organisation that delivers on the expectations for all those who share our love of the South Downs."

The charity works with young people of all ages, from schoolchildren to university students, supporting projects that help to preserve and promote nature in the South Downs. We look forward to welcoming new young adult members and engaging with the South Downs community.

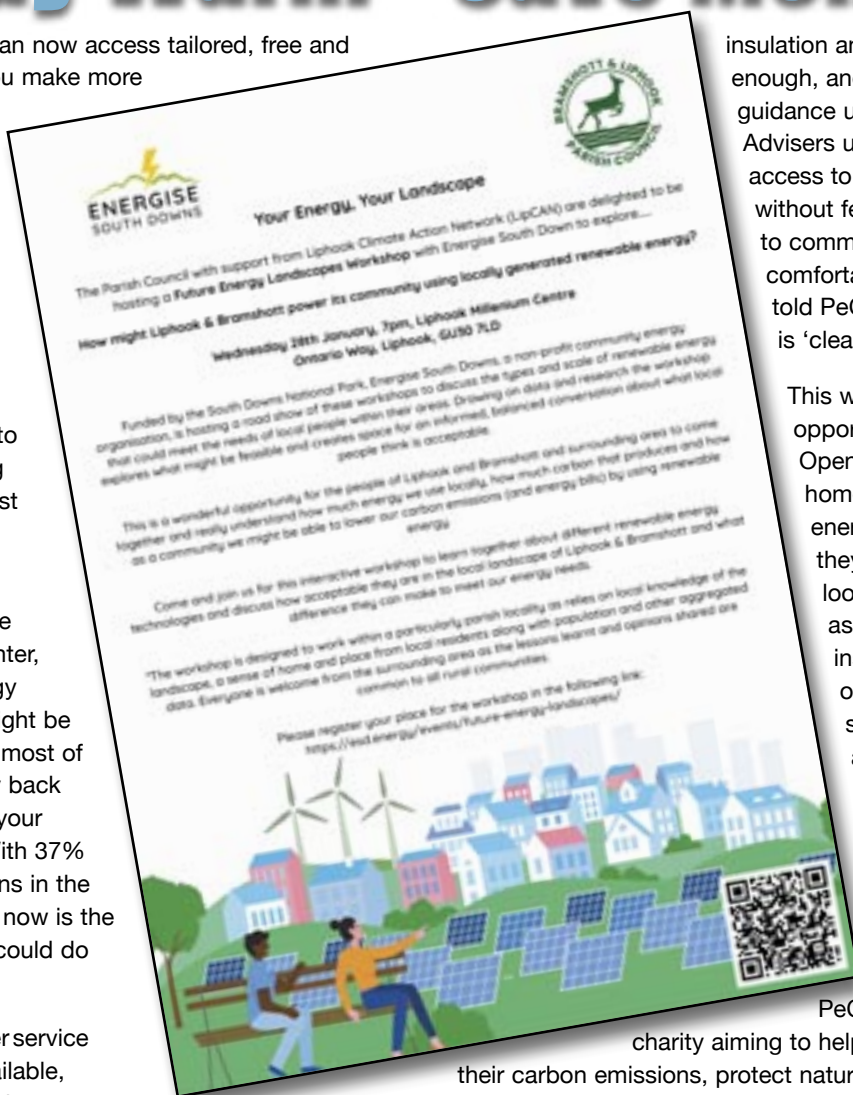
To find out more visit: <https://friendsofthesouthdowns.org.uk/support-us/young-adult-membership/>

THIS WINTER Stay Warm - Save Money

Hampshire homeowners can now access tailored, free and impartial advice to help you make more informed decisions about home energy upgrades, thanks to the My Home Made Better energy advice service. The experienced advice team at Petersfield Climate Action Network (PeCAN) are working alongside energy advisers at the Environment Centre (tEC) to deliver the service, helping residents across South East Hampshire.

Advisers could help you understand why your home might be losing heat in winter, what is causing high energy bills, and whether there might be opportunities to make the most of grant funding, earn money back from the grid, or increase your property's overall value. With 37% more renewable installations in the first half of 2025 (vs 2024) now is the time to find out what you could do with your home.

The My Home Made Better service recognises that widely available, generic information on heat pumps,



insulation and solar panels is not enough, and that you need relatable guidance unique to your home. Advisers understand the demand for access to reliable, trustworthy advice, without feeling under pressure to commit to work you're not comfortable with. Recipients have told PeCAN that the advice offered is 'clear and extremely helpful'.

This winter, PeCAN offers you the opportunity to visit a local 'Warm Open Home' to speak to the homeowner directly about the energy saving improvements they have made. You can look at the technology, ask residents about the installation process, and find out how much they are really saving on their energy bills as a result. Further details of the open homes and how to book a visit will be posted on the PeCAN website, in the monthly PeCAN newsletter, and on social media.

PeCAN is an environmental charity aiming to help local communities reduce their carbon emissions, protect nature, improve resilience, and adapt to the changing climate. Their projects include the immensely popular A Fruit Tree in Every Garden scheme, which has seen over 3,000 subsidised fruit trees distributed across East Hampshire over the past five years. Their biennial Petersfield Eco Fair welcomed more than 1,500 visitors in 2024, and is set to return in July 2026. Their education outreach programme, working with local primary and secondary schools, has seen more than 100 free workshops and assemblies delivered to over 5,000 students.

If you'd like to start exploring options for your home, email: mhmb@petersfieldcan.org, fill in the contact form on PeCAN's website: petersfieldcan.org/projects/home-energy/my-home-made-better or call the Environment Centre on free phone line: **0800 804 8601**.

For more information, inspiration, case studies, and videos from around the region, head to: www.myhomemadebetter.org

My Home Made Better has received funding from the Energy Industry Voluntary Redress Scheme. It is supported by Hampshire County Council, Southampton City Council, and Portsmouth City Council, and delivered by the Environment Centre, in partnership with Petersfield Climate Action Network, Winchester Action on the Climate Crisis and Energy Alton.

CLUBS AND ORGANISATIONS IN AND AROUND LIPHOOK

AGE CONCERN LIPHOOK - 01428 735123.

w: www.ageconcernliphook.org.uk e: info@ageconcernliphook.org.uk

ALCOHOLICS ANONYMOUS - 0800 9177 650.

ALZHEIMERS SOCIETY - Dementia Helpline: 0845 300 0336.

ARTS SOCIETY GRAYSHOTT - Kathy: 01428 608842.

w: www.theartssocietygrayshott.org

ARTS SOCIETY HASLEMERE - Chairman: Mrs Sarah Barnes.

w: www.theartssocietyhaslemere.org.uk

BADMINTON CLUB - Morgan Thompson: 01730 817881.

BEEKEEPERS ASSOCIATION (Petersfield and District) -

Jenny Peters: 01730 821920.

BELL RINGERS (Bramshott) - Diane Hart: 01428 723798.

BORDON BOULE CLUB - Mr A. Thomas: 01420 478298.

BOWLING CLUB, LIPHOOK - Mike Gunton, Tel 01428 714609, 07594 568190.

BRAMSHOTT EDUCATIONAL TRUST -

e: clerk.bramshott.trust@hotmail.co.uk

BRAMSHOTT & LIPHOOK BRANCH OF THE EAST HAMPSHIRE

CONSERVATIVE ASSOCIATION - Angela Glass: 01428 722375.

BRAMSHOTT & LIPHOOK HERITAGE SOCIETY (Bramshott and Liphook) - 01428 723325.

BRAMSHOTT & LIPHOOK SOCIAL CLUB - 4 Headley Road, Liphook, GU30 7NP: 01428 727111. e: info@blsc.org.uk w: www.blsc.org.uk

BRIDGE CLUB (Liphook) Friday Evenings - Judith Wheatley: 01428 713913.

BRITISH RED CROSS - Mrs C. Saunders, Chase Community Hospital, Conde Way, Bordon: 01428 488801.

CANCER RESEARCH U.K. (Shop) - 20 Station Road: 01428 724664.

CITIZENS ADVICE BUREAU - National Number: 03000 0231 231.

CONFORD VILLAGE HALL TRUST - Mrs R. Parry: 01428 751364 and Deputy, Mrs G. Woodward: 01428 751474.

COUNTRYSIDE COMPANIONS WALKING GROUP -

Barbara Miller: 01428 722859. e: ccwalkinggroup@gmail.com

CRUSE - bereavement care. Confidential counselling and information: 0808 808 1677.

DREAMS COME TRUE - Sophie Gunner, Community Fund Raiser:

01428 726330. e: Sophie@dreamscometrue.uk.com

DYSTONIA SOCIETY - Jennifer Wiseman: 01428 722516.

FLORAL DECORATION SOCIETY (Liphook) -

Wendy Evans (Sec): 01428 722212.

FRIENDS OF THE SOUTH DOWNS - 01798-8750732.

e: enquiries@friendsofthesouthdowns.org.uk

FURNITURE HELPLINE - Gerald Robinson: 01420 489000.

GUIDE DOGS FOR THE BLIND ASSOCIATION -

Pam Higgins: 01428 751572.

HAMPSHIRE BADGER GROUP - Mick Neeve: 01420 87366.

HASLEMERE BORDER ATHLETIC CLUB -

e: Contact@hbac.co.uk or w: www@hac.co.uk

HASLEMERE CAMERA CLUB - Clinton Blackman LRPS: 01428 727403.

HASLEMERE PERFORMING ARTS - Angela Canton: 01428 652360.

HASLEMERE MUSICAL SOCIETY - (Choir & Orchestra Rehearsals Mondays). Sue Ecclestone: 01428 605612.

e: susan.ecclestone@tiscali.co.uk w: www.hmsoc.org.uk

HASLEMERE SWIMMING CLUB - Helen Reynolds,

e: admin@haslemereswimmingclub.co.uk

HASLEMERE TOWN BAND - e: hello@haslemeretownband.co.uk

GREEN PARTY - alison.evans1948@yahoo.co.uk

HERITAGE CENTRE - 1st Floor Millennium Centre: 01428 727275.

e: liphookheritage@gmail.com

HOCKEY CLUB (Haslemere Ladies) - Home ground at Woolmer Hill.

Pauline McBrown: 01420 477409.

HOLLYCOMBE STEAM and WOODLAND GARDENS SOCIETY -

Mor R. Hooker: 01428 724900.

HORTICULTURAL SOCIETY (Bramshott and Liphook) -

Secretary: Ann Haussauer, 41 Chiltley Way: 01428 723045.

w: www.liphookhortsoc.org.uk

LABOUR PARTY (Liphook Branch) - Dr. John Tough, Horseshoes,

Griggs Green: 01428 724492.

LIBERAL DEMOCRATS LIPHOOK - Mr M. A. Croucher: 01428 723834.

LiDBA - (Businessmen's Association). e: info@lidba.co.uk

LIPHOOK ARTS & CRAFTS SOCIETY -

Linda Beck. e: membership@liphookartsandcrafts.org.uk

Andy Tubbs. e: chair@liphookartsandcrafts.org.uk

w: liphookartsandcrafts.org.uk

LIPHOOK CARNIVAL - Dianne Heath: 07778 281379.

LIPHOOK & RIPSLEY CRICKET CLUB - Secretary - Nick Clansfield:

07789 284568. e: Nick.cansfield@hotmail.co.uk Youth Co-ordinator

- Steve Saycell: 07771 788486. e: stevesaycell1@gmail.com

LIPHOOK CARERS SUPPORT GROUP - Sonia Meredith: 01428 288913.

e: soniameredith@icloud.com

LIPHOOK CHURCH CENTRE - Enquiries: 01428 725390.

LIPHOOK COMMUNITY LAUNDRY - Helen Brown: 01428 722875.

e: info@liphookcommunitylaundry.co.uk

LIPHOOK DAY CENTRE FOR THE ELDERLY - Peak Centre:

01428 724941.

LIPHOOK FOOD BANK - w: www.liphookfoodbank.com 07871 287295

e: liphookfoodbank@gmail.com

LIPHOOK IN BLOOM - Paul Johnson: 01428 724813 & 07854 074276.

e: paul@tethersend.uk

LIPHOOK & DISTRICT MODEL RAILWAY CLUB - Nick Harling.

e: ldmrc-Secretary@outlook.com

LIPHOOK MILLENNIUM CENTRE - 01428 723889.

w: www.liphookmc.co.uk

LIPHOOK MODELLERS CLUB - John Clare: 01428 729967.

LIPHOOK TABLE TENNIS - Peter Ritchie: 01428 727815.

LIPHOOK TENNIS CLUB - Simon Hargreaves: 01420 474899/07717 016374.

LIPHOOK UNITED FOOTBALL CLUB -

Chairman: Mark Culverhouse. e: mark@football-fit.co.uk

John Raeyen. e: media-contact17@liphook-united.org

LIPHOOK VILLAGE HALL - Bookings. e: chair@liphookvillagehall.org.uk

LIPHOOK VILLAGE SURGERY PPG - 01428 728270.

LIPHOOK WOMEN'S INSTITUTE - e: liphooksec@hampshirewi.org.uk

w: www.facebook.com/LiphookWI/

LISS IN STITCHES - Deirdre Mitchell: 01730 267214.

LOVE TO SING CHOIR - Liphook Methodist Church Hall.

Contact Vanessa K. Breach: 07766 083862.

LUDSHOTT PHOTOGRAPHIC CLUB - Diana Grant: 01428 713706.

LYNCHMERE CRICKET CLUB - Contact Richard Saulet:

e: lynchmerecc@gmail.com

LYNCHMERE SOCIETY - Conservation and Natural History.

Membership enquiries - Louise Searight: 01428 723715.

w: www.thelynchmeresociety.org

MACULAR SOCIETY HASLEMERE SUPPORT GROUP - 01428 602991.

M.A.D. COMPANY (Methodist Amateur Dramatics) - 07766 083862.

MUSICAL SOCIETY (Haslemere) - Choir and Orchestra, Rehearsals

Mondays. Sue Ecclestone: 01428 605612.

MYAWARE CHARITY (Myasthenia Gravis) - Mrs J. Finney: 01428 776467.

NATIONAL TRUST - Ludshott Commons Committee -

Susan Salter: 01428 751409.

OPERA SOUTH - Caroline Martys: 01428 64476 or 07950 646326.

OPTIMIST BADMINTON CLUB - Bohunt - David Lush: 01428 725166.

PARISH COUNCIL - Bramshott and Liphook - The Haskell Centre,

Midhurst Road, Liphook: 01428 722988.

PEAK CENTRE - Booking Secretary, Ann Hall: 01428 727751.

PETERSFIELD YOUNG FARMERS CLUB - 8-10pm

Suzy Goring, 01420 488325.

RAMBLERS (Liphook & District) - Secretary, Raj Jas:

e: rajjas@hotmail.co.uk w: www.liphookramblers.wordpress.com

RAPE AND SEXUAL ABUSE SUPPORT CENTRE - 01483 546400 or

Freephone: 0800 0288022.

RIVER WEY TRUST - e: office@riverweytrust.org.uk

w: www.riverweytrust.org.uk

ROTARY CLUB - Haslemere, Debbie Morley: 01428 643416.

ROYAL BRITISH LEGION - Sean Brady RM: 0771 100 6847.

ROYAL NAVAL ASSOCIATION (Liss & District) - 01730 895470.

R.S.P.C.A. - Di Fowler: 0771 303 8429.

SSAFA/FORCES HELP (Soldiers, Sailors & Airmans Families Association)

East Hants Branch, Divisional Sec., Patricia Lyons: 01420 561264

SELF SUFFICIENCY GROUP - East Hants, Dru Furneaux: 01730 814193.

STANDFORD, PASSFIELD AND HOLLYWATER COMMUNITY

ASSOCIATION - Sue Sergeant: 01428 751326. Hall Bookings,

Ron Sergeant: 01428 751326.

TANTUM TRUST (local charity for local people) - Shops in

Station Road (01428 727211) and in Bordon, Grayshott & Haslemere,

e: info@thetantumtrust.co.uk w: www.thetantumtrust.co.uk

THE CHILTLEE BRIDGE CLUB - Mrs Sue Monks: 01428 723306.

u3a LIPHOOK - e: membership1@liphooku3a.org.uk

VOLUNTARY CARE GROUP (Bramshott and Liphook Parish) -

01428 723972. Transport provided for those in need.

WOOLMER FOREST ARCHAEOLOGICAL and HISTORICAL SOCIETY -

1st Wednesday of month, Colin Brash: 01428 713256.

WOOLMER FOREST LIONS CLUB - Ken Bassett: 01428 713285.

CHILDREN'S AND YOUNG PERSONS' CLUBS AND ORGANISATIONS

ARK PRE-SCHOOL - Cleone Inglis-Jones: 07775 394230
e: info@thearkliphook.co.uk

ARMY CADET FORCE - No. 6 Platoon, 'A' Company, 1st Battalion
Hants & I.O.W. ACF - Detachment Commander: Staff Sergeant
A. Steven: 07796 268095, Parade Night: Tuesday at Wolfe House,
Bordon, 7.00 - 9.30 p.m.

CHILDREN'S CHILD HEALTH CLUB -

Millennium Centre, 9.30 - 11.00am: 01428 483827.

FERNHURST CENTRE IT COURSES & INTERNET CAFE -

2, Crossfield, Vann Road, Fernhurst, GU27 3JL: 01428 641931.

HASLEMERE TOWN BAND - TRAINING BAND -

e: hello@haslemeretownband.co.uk

INFANT SCHOOL PTA - e: Lisfa@Liphook-infants.sch.uk

JUDO CLUB - Mr M. Poke, Bohunt Centre: 01428 724324.

LIPHOOK AND RIPSLEY CRICKET CLUB YOUTH MEMBERSHIP -

Steve Saycel: 0777 178 8486. e: Lrccyouthcricket@gmail.com

LIPHOOK CRUSADERS GROUP - For 4-14 year olds. Friday evenings
Church Centre. Contact Church Centre Office: 01428 725390.

LIPHOOK JUNIOR SCHOOL P.T.A. - e: foljs@liphook-jun.hants.sch.uk

LIPHOOK THEATRE CLUB - For 5-11 year olds: 01428 722813.

LITTLE BADGERS PRE-SCHOOL - For 2-4+ year olds

Sports Pavilion, Headley: 01428 714827.

LITTLE LAMBS - Tuesday 9.45 - 11.45am

Contact Church Centre Office: 01428 725390.

MADHATTER NURSERY BOHUNT SCHOOL - 01428 727288.

SWIMMING CLUB - e: admin@haslemereswimmingclub.co.uk

TOTS & TINIES - Toddler group for 0-5's and carers. Thursdays
9.30 - 11.30am term time at the Millennium Centre: 07971 435728.

e: totsandtiniesliphook@gmail.com

TRAINING BAND - Maurice Wright: 01428 723940.

membership@liphookscouts.org.uk

If you have any other questions about Scouting or our Group then
please contact:-

- **Mark Boosey and Neil Caie** (Group Leaders)
e: leaders@liphookscouts.org.uk for enquiries about Scouting and
our sections.
- **Stuart Clark** (Group Chairman) on **07900 463482**
e: chair@liphookscouts.org.uk for volunteer and fundraising
enquiries as well as for general enquiries.
- **David Hains** (Treasurer)
e: treasurer@liphookscouts.org.uk for subs enquiries.
- **Alison Jackson** (Scout Shop) on **01428 723248**
e: alisonjackson@btopenworld.com for uniform or equipment
enquiries.

Scouting sections:

- Willow Beavers - Monday
- Ashdown Beavers - Tuesday
- Maple Beavers - Thursday
- Downlands Cub Pack - Tuesday
- Oakhanger Cub Pack - Thursday
- Wheatsheaf Cub Pack - Friday
- Shackleton Scout Troop - Wednesday
- Scott Scout Troop - Friday
- Stirling Explorer Unit - Monday

*Any changes, please email to Fay Boyett:
fay.lcm@outlook.com
by the copy date shown on the Inside Front Cover*

GIRLGUIDING LIPHOOK DISTRICT

With guiding, girls have fun, adventure and the space to discover their
potential. If your daughter would like to join our active Girlguiding
District in any section then register at:

www.girlguiding.org.uk/information-for-parents/register-your-daughter/
and the unit leader will contact you directly.

Guiding Sections:

RAINBOWS AGES 5-7

1st Liphook Rainbows - Tuesday

2nd Liphook Rainbows - Thursday

BROWNIES AGES 7-10

2nd Liphook Brownies - Mondays

5th Liphook Brownies - Tuesday

4th Liphook Brownies - Thursday

GUIDES AGES 10-14

2nd Liphook Guides - Monday

1st Liphook Guides - Wednesday

RANGERS AGES 14-18

1st Liphook Rangers - Wednesday

VOLUNTEERING OPPORTUNITIES:

Young Leaders ages 14-18

Adult Volunteers 18+

For any other enquiries please contact: Girlguiding Liphook District
Chair Ruth Whiting:

liphook-guides@outlook.com

SCOUTS

1st Liphook Scout Group - Scouting offers young people, aged
between 6 and 25, a fantastic range of fun, exciting, challenging and
adventurous activities. In Liphook we have one of the largest and most
active Scout Groups in Hampshire. 1st Liphook Scout Group has over
200 members and runs 3 Beaver Colonies (for those aged 6-8), 3 Cub
Packs (9-11), 2 Scout Groups (11-14) an Explorer Scout Unit (14-18)
and has strong links to our District Scout Network Scout Unit (18-25).

If you live in Liphook or the surrounding villages and you would like your
son or daughter to experience the everyday adventure of Scouting, then
please contact our Membership Secretary, Vic Pires, to find out more
about joining:



*Millie holding her Chestnut Cup
awarded for Best Overall in the
younger children's classes at the recent
Horticultural Society's Autumn Show.*

