

# Liphook

COMMUNITY MAGAZINE  
WINTER 2016





## PARISH PEOPLE

# Brenda and Tony Halsey

Brenda and Tony are soul mates who have been married for over fifty years, having had the distinction of being among the first to hold their wedding reception in Farnham Castle, after getting married in St Thomas on the Bourne. Four children and nine grandchildren have added to their contentment. They came to live in their house in South Road over twenty-five years ago as Brenda had links with Liphook and Tony is amazed that they live just a hundred yards from Littlefield, which was Brenda's first school. When her grandparents retired in 1931, after working in the Sudan, they came to live in Quarry House, near Liphook Golf Course. Subsequent members of the family, including Brenda, have been members of the Golf Club ever since. Her parents retired to Holly Cottage in Bramshott. Brenda arrived in England with her family when she was eight, having lived in Alexandria, Egypt and also South Africa where the family were evacuated during the war, while her father was a prisoner of war first in Italy and then in Germany. The family travelled to England in a troop ship which docked in the Clyde. Brenda was overwhelmed by the sight of the green fields of the British Isles and after joining her grandparents in Liphook attended Littlefield School. Until then she had been educated by her beloved Nanny, but she had been remarkably well taught. She went on to study French and Spanish at London University.

Tony was born in Walthamstow and became a chorister at the Choir School of All Saints Church in London's Margaret Street (just behind Oxford Circus). A music scholarship took him to school in Canterbury and a choral scholarship to King's College, Cambridge where his life was immersed in singing in the world famous chapel. Later he qualified as a solicitor. He was ordained priest in the Church of England in his early forties and after a curacy in Derby spent ten years as Chaplain at Canford School, Wimborne. Returning to full time legal work in Weybridge, he and Brenda moved to their present home and Tony became an Assistant Clergyman to Robin Ewbank at St Mary's, Bramshott, taking Sunday services, weddings, baptisms and funerals, which he has been doing ever since. In fact he told me that sometimes he takes three services on a Sunday if the Rector, Reverend Valentine Inglis-Jones and other members of the team are not available. He still loves music and took over from Daphne Stafford organizing visits to the opera in London, Southampton and Glyndebourne until he retired after 44 trips. He extemporizes on their beautiful grand piano every day. At Christmas he organizes the Church Carol Service and conducts the choir.

Brenda used to work in the village, being in the Church Office for ten years, and has recently retired after four years as a church warden, a job that involves organizing rotas of church helpers, repairs to the fabric of the building and the upkeep of the



churchyard. Every five years the church building has to be inspected by an architect who advises on repairs needed. There are many small details to be attended to by the churchwarden in order to ensure that Church life is running smoothly.

She and Tony are very interested in the joining together of all the churches in the village in special projects. Taking over from Clare Hartley fifteen years ago Brenda has organized the yearly Christian Aid Week which takes place every May in which all the churches of Liphook are involved. The lead up to it is very busy. There is a meeting of the church representatives in January to discuss the programme and the materials are ordered (envelopes for house to house collections, identity cards etc.) which are bundled up for each street collector from the various church congregations. The Christian Aid Coffee Morning, held during Christian Aid Week at the Church Centre

with stalls selling delicious cakes, plants, toys etc, is a great money spinner. The Christian Aid Harvest Supper took place in September and over that weekend over £550 was raised for Christian Aid. So far this year the total raised has reached an amazing £5,450. Tony is the treasurer. New volunteers to do the house-to-house collecting are always needed. The watchword of the charity is 'We believe in life before death'. The focus at harvest was to assist farmers in Kenya where drought conditions, due to climate change, have caused crops to fail. The local church there is helping to build special sand dams to preserve water and enable farmers like Rhoda to grow enough vegetables to make a living and even pay to send her children to school. Previously she and her children spent up to five hours a day carrying backbreaking water containers to the plants. There was no time or money for schooling. Now the next generation can look for a better future.

July 1st is an important day in St Mary's Church calendar when Canada Day takes place. There is a service on the nearest Wednesday to commemorate the deaths of 319 Canadian soldiers billeted on Bramshott Common at the end of the First World War, who died here, mostly from a particularly virulent influenza virus. Liphook Junior School liaises with the Church and children learn about the war and can adopt a soldier, drawing little maple leaves to put on the graves. In 2014 the Commonwealth War Graves Commission invited Brenda and Tony as representatives of the Church, to a special dinner on board HMS Victory as a thank you gesture for hosting the Canada Day Service. Tony remembers that his dining table on the gun deck was suspended on ropes in true nautical style.

Tony and Brenda have every intention of passing what remains of their lives in their Liphook bungalow among their friends in church and village.

*June Wright*

Christmas Special   Christmas Special   Christmas Special

Christmas Special



## Liphook and Fernhurst Scouts

Christmas Special

YOUR CHRISTMAS CARDS  
HAND DELIVERED FOR 25p

A Christmas offer you can't refuse  
in Liphook and Fernhurst

Post cards with payment into a  
local Liphook Scout Post box\*  
from 3rd December

or

at the Fernhurst Centre in the  
heart of Fernhurst Village

Last Posting Date Saturday  
17th December at noon

Deliveries from 18th December to the following areas  
Liphook, Passfield, Conford, Bramshott  
and the whole of Fernhurst

\* Scout HQ, Sainsbury, Gables News, Route 6, Passfield Store,  
Co-op, Country Wide Stores, Hiscocks Pet Supplies, The Deer's Hut

Christmas Special



Christmas Special

Christmas Special   Christmas Special   Christmas Special



# Can We Help You?

Are you 25 or under?

Do you live in the Parish of  
Bramshott and Liphook?

The trust is a fund to support young people by awarding grants to help towards the cost of educational activities. These may include educational trips, specialist courses and tuition, pursuit of sports, extra-curricular activities, purchase of books, specialist tools and other equipment.

See our website for further information or to download an application form.

[www.bramshotteducationaltrust.org.uk](http://www.bramshotteducationaltrust.org.uk)

The views expressed in this magazine are  
those of the contributors and not necessarily  
those of the Magazine.

Copies of this magazine can be viewed on the  
Liphook website as well as being delivered to  
your door by hand in the usual way.

[www.liphook.uk](http://www.liphook.uk)  
then go to Community Magazine

## The Liphook Community Magazine

exists to help maintain, encourage and initiate aspects of community life in which individuality, creativeness and mutual fellowship can flourish.

It is produced and distributed by volunteers, free, to every household in the Parish of Bramshott and Liphook. It is financed by advertising and donations from individuals and organisations.

The circulation is 4,000 copies per issue

### Contents

Montage by Patricia Worrall	O.F.C.
Parish People: Brenda and Tony Halsey	I.F.C.
Scouts Christmas Cards / Bramshott Educational Trust	1
Liphook Library / Pooh's 90th Anniversary	2
Peep Inside / WEA	3
Liphook in Bloom	5
Liphook Carnival	6
Where Are We?	7
Heritage Centre News / Model Railway Club	9
From the Riverbed	10
Bohunt School	11
Churches of Liphook	13/14/15
Love to Sing	17
Millennium Centre, Liphook / Lynchmereans Present . . .	18
Federation of Liphook Infant and C of E Junior Schools	19
MAD - There is Nothing Like a Dame	20/21
BL&DHS Show and Results	22/23
Churchers College	25
Crankers Annual Bike Ride	27
The Fernhurst Centre	29
The Beatrice Potter Story	31
Womens' Institute / Rubbish - Litter - Waste	32
NHS and Emigrants / Roald Dahl	33
Poets Corner	35
The Royal Exchange First Anniversary	37
Liphook and Canada	38
Clubs & Organisations	39/40
Learn Sign Language	I.B.C.
Picture by George Ayling	O.B.C.

### Magazine Committee

President: Mrs. M. Wilson. Tel.: 722464  
 Chairman: Mr. Roger Miller. Tel.: 722859  
 Editor: Mrs. H. Williams. Tel.: 722084  
 or email: [hazel@jadehouse.force9.co.uk](mailto:hazel@jadehouse.force9.co.uk)  
 Secretary: Mrs. P. Worrall. Tel.: 723850  
 or email: [quarwoodpw@talktalk.net](mailto:quarwoodpw@talktalk.net)  
 Treasurer: Mr. J. Anthistle. Tel.: 723676  
 Distribution Manager: Mrs. S. Knight. Tel.: 723502  
 Editorial: Mrs. M. Wallace, Mrs. J. Wright, Mr. R. Sharp

### Contacts

Advertisements Enquiries: Treasurer. Tel.: 723676  
 or email: [mag@liphook.myzen.co.uk](mailto:mag@liphook.myzen.co.uk)

Next Copy Date: 27th January 2017

Advertisements (Colour - cost each)	1	4 or more
Eighth page	£40	£35
Quarter page	£80	£70
Half page	£160	£140
Whole page	£320	£280

© Liphook Community Magazine and Authors

COPY: The Magazine is always interested to receive articles  
of Local or Historical Interest, Club News or Stories. Contact  
Hazel Williams or Patricia Worrall for more information.  
Email copy to: [quarwood@aol.com](mailto:quarwood@aol.com)



# Liphook Library

## Grown-ups Colouring Club at Liphook Library

Do you remember colouring in when you were still at school? Did you draw silly patterns on a sheet of paper and then colour it in using all the colours of the rainbow?

People talk about it as helping with stress relief, focus, creativity and social interaction. And let's face it, just a little bit of fun thrown in for good measure.

After doing a bit of research on the internet these are some of the reason that have been given for joining the clubs that are already up and running in some of Hampshire's libraries.

1. Colouring pages for adults help de-stress
2. Colouring activities activate both parts of the cerebral hemisphere
3. Colouring pages for adults take them back to childhood
4. Colouring is like meditation
5. Colouring for adults helps reduce anxiety
6. Colouring for adults helps them re-discover themselves
7. Colouring for adults helps spark creativity
8. Colouring helps adults reconnect with their Inner Child

Colouring in on your own is ok but imagine the fun you could have in a group. You're never too old or young to join in. At a children's activity event we ran in the autumn half term, mums couldn't wait to join in with the colouring of fishes, crabs and seahorses. Some of their colouring even ended up on the display board in the children's library.

In the New Year the library is hoping to start a Grown-ups Colouring Club. Every Friday morning, between 10:30 and 12:00. Why not come along and join in this social gathering. You can keep it simple with a couple of colours or really go for it with as many as we've got. The Library will supply all the colouring sheet, pens and pencils; all you have to do is bring your imagination and company.

If you want to come along and just find out what it's all about, we have a couple of samples you can take away with you to try at home. The Sessions in the library will be a drop in session with limited numbers.

## Summer Reading Challenge statistics 2016

While I've got your attention, I'd also like to send out a huge thank you to everyone who took part in the Big Friendly Read Summer Reading Challenge this year. Not only did we have a group of amazing volunteers, both returning ones and new ones, running the desk for us, but the children of Liphook knocked the statistics right out of the park. The number of starters at Liphook Library was up by a staggering 53% on last year figures, putting us at the very top of the statistics list for all Hampshire Libraries. The number of finishers was up by an amazing 34%, beaten only by Stubbington Library. YOU GUYS ROCK!!

Take care and see you soon

Lucy

# Pooh's 90th Anniversary

**This year it is Pooh's 90th anniversary - the most famous bear in literature and possibly the best philosopher in history.**

Here are Pooh's answers for children, and adults, to help with the understanding on how to live a good life:

**If the string breaks, try another piece of string.**

**Nothing is impossible but I do nothing all day. There are four or five meanings of nothing in this little sentence.**

**It is best to know what you are looking for before you look for it.**

**It's more fun to talk with someone who does not use long difficult words, but rather short easy words like "What about lunch".**

**When you get a sinking feeling, don't worry, it's probably because you are hungry.**

**If the person you are talking to does not appear to be listening, be patient. It may simply be that he has a small piece of fluff in his ear.**

When AA Milne's Winnie the Pooh, based on his son Christopher and his stuffed toys, was first published it was an instant hit selling 35,000 copies in Britain and 150,000 in America. Take care and see you soon.



Pooh with new friend Penguin.



# Peep Inside

*Peep Inside* has graced Station Road with its presence for 15 years, first in No. 30, and now (since 2006) in no. 22. It's obvious, from the name, that owner Linda Costello wants would-be customers to do just that - peep inside - and see what's there. The name came to her in the middle of the night. She scribbled it on the back of a coaster, then found the bird motif which shows a feathered friend bringing the gift of a flower in its beak, which became the store's logo.



The range and amount of stock in the shop is impressive. Linda goes up to the National Exhibition Centre in Birmingham twice a year to trawl around in the vast gift fairs - 19 halls with about 150 wholesalers in each. She tells me it's exhausting but important as it gives her ideas for new items, as she changes her stock with every season. Besides cards, wrapping paper, stationery and toys,

she also sells large, beautifully-patterned scarves, stylish handbags of jazzy colours and a range of snazzy, reasonably priced jewellery - different from what's on the High Street. She also stocks fold-up umbrellas, colourful shopping bags within shopping bags - waterproof and compact - so useful now that shops charge for carrier bags. You can also purchase luscious Belgian and English chocolates in personalised gift boxes. (I'm advised that salted caramel and lime and chilli are the current favourites.) With Peep Inside on one side of the street, and the General Wine Company on the other - your gift-shopping needs can be fulfilled in minutes!

Cards are the mainstay of the business, although Linda originally wanted Peep Inside to be solely a gift shop. Her product line has continued to expand over the years. She can provide helium balloons, for all occasions (see photo). The newest addition is personalised gifts, eg mugs, cards, cushions - done within 15 minutes of selection. You can have a photo or picture as well as a message printed on the chosen object. Cards can be posted direct from the shop. A sample mug set had 'Mr and Mrs Anderson' printed on it. A customer came in and asked to buy this very set to give to their friends who just happened to be a Mr and Mrs Anderson! Other items Linda and her staff can personalise include ribbons, sashes and banners as well as iron-on tapes for school uniforms with, not only the child's name, but also a relevant motif such as a football! How more personal can you get?

Peep Inside's normal opening hours are from 9 - 5 Monday to Friday, 9 - 3 on Saturdays BUT on Monday evening, 19th December, they will stay open until 8pm, for late night pre-Christmas shopping. Come in and have a glass of Prosecco and a chocolate while you decide upon your purchases. Linda will have new stock for Christmas, including a line of children's story books manufactured by a company called Jellycat. The product is a cuddly soft toy animal with accompanying book in which the toy is the star of the story. What fun!



Peep Inside: 01428 722233. [www.peepinside.co.uk](http://www.peepinside.co.uk)

Mari Wallace



## LIPHOOK WEA BRANCH Spring Courses 2017

### Literature Course

**Thomas Hardy - Under the Greenwood Tree**  
*We will discuss various aspects of the book and perhaps look at some of Hardy's poems.*

**Tutor:** John Haynes BA PhD  
**Venue:** Liphook Millennium Centre  
**Days:** Wednesdays 10:00am - 12 Noon  
**Start:** 4th January 2017 - 10 sessions  
**Fee:** £86.10

### History

**The Romanovs**  
*One hundred years after the Revolution. The dynasty which reigned over Russia from 1613-1917.*

**Tutor:** Colin Parrish  
**Venue:** Liphook Millennium Centre  
**Days:** Fridays 10.00am - 12 noon  
**Start:** 6th January 2017 - 10 Sessions  
**Fee:** £86.10

### Study Day

**Russian Music Before The Revolution**  
*This course complements the course on the Romanovs.*

**Tutor:** Jeremy Neville MA & ALCM (piano)  
**Venue:** Liphook Village Hall  
2 Headley Road  
Liphook GU30 7NT  
**Date:** Saturday 18th March 2017  
**Time:** 10:00am - 4.00pm  
**Fee:** £25 which includes refreshments in the morning and afternoon, and a light lunch.

For more information please contact:

**Judith Harris**

**Tel: 01428 609996**

## LIPHOOK



THE UNIVERSITY OF THE THIRD AGE

*The U3A is a self help organisation for people no longer in full time employment, providing educational, creative and leisure opportunities in a friendly environment.*

The approach is learning for pleasure, with members running their own Groups by drawing on their own experience.

Liphook U3A has over 40 Groups covering subjects such as history, computing, crafts, photography, walking, trips out to places of interest and theatres, plus many more.

Our monthly meetings at the Millennium Hall are also very popular and we enjoy some very interesting speakers covering many topics of general interest.

*If any reader would like to find out more or join, contact Terry Pate, Chairman, on 01428 729180 (E-Mail: [chairman1@liphooku3a.org.uk](mailto:chairman1@liphooku3a.org.uk)) or [membership1@liphooku3a.org.uk](mailto:membership1@liphooku3a.org.uk)*

There is lots of information on our website  
[www.liphooku3a.org.uk](http://www.liphooku3a.org.uk)

## Need Help with your Accounts or Tax Return?

[www.jmbaccounting.co.uk](http://www.jmbaccounting.co.uk)



Contact JMB Accounting on

**01428 727313**

or call in for a chat

**10 London Road Liphook**

*We're friendly and very approachable!*



**CONTACT LENSES VARIFOCAL LENSES HOME VISITS SUNGLASSES**

**YOU SHOULD HAVE GONE LOCAL!  
YOUR LOCAL PROFESSIONAL OPTICIAN AND CONTACT LENS SPECIALIST**

Liphook Eye Care is completely devoted to the highest standard of sight care:

**KEEP IT LOCAL** and experience the benefits of personal service with very competitive prices!

31 Station Road, Liphook, GU30 7DW

Tel: **01428 725158**

Website: [www.liphook-eyecare.com](http://www.liphook-eyecare.com)



**£40 OFF LISTED BRANDS WITH THIS VOUCHER**

THIS OFFER CANNOT BE USED IN CONJUNCTION WITH OTHER OFFERS.



# Liphook in Bloom

Members of Liphook in Bloom, friends, helpers and sponsors gathered at The Millennium Hall Liphook on 26 September for a Social Evening. There was a very welcoming atmosphere with tables laid with flowers, wine and photo albums. The albums weren't just there for browsing, but to help with the questions on the very searching quiz sheets. The quiz was an ideal ice breaker as people arrived and chatted not only with their fellow table guests, but with other tables to find the answers. Terry Burns, President of Liphook in Bloom gave a most interesting and entertaining presentation about the organisation's history. This too would prove useful in getting that quiz done.



Just as everyone's brain was beginning to ache - there was some entertainment provided by Luke Evans and his cousin Jake; two very talented young men who wowed the audience with their juggling and unicycle skills.



This was followed by a sumptuous buffet prepared by Barbara Frost and helpers and another chance for guests to mingle.

Once the guests had done justice to the marvellous spread, they were able to sit back and enjoy a video produced by Jan Roles, Russel Ellis and Paul Johnson showing highlights of the Liphook in Bloom year.

Then came the moment everyone was waiting for – the answers to the quiz! Nobody got them all right - in fact not many people had even attempted all the questions, it was such a 'social' evening, that that was what everyone had been busy doing - just socialising! However the person with the highest score was Philip Jordan. Well done Phil!

The evening was coming to a close and it was time for Irene Ellis, Chairman to say a few words. She said how pleased she was to see everyone there and thanked them for their help and support throughout the year. She stressed that she hoped that would continue as and when a few longstanding members of the organisation stepped down and new team members took over. The evening finished with the presentation of the Chairman's Award. This went to Vice Chairman Keith Tipping who is stepping down from his role in charge of the watering team. His enthusiasm and dedication will be sorely missed.

As a final goodwill gesture everyone was given a bag of bulbs to take home. What a party!

At the time of going to press, the team are now preparing for spring. The summer bedding and containers have all been cleared ready for bulb planting after the carnival - talking of which they are even getting an entry ready for that! Then we can all look forward to the Christmas lights going up. Our village would certainly be rather dull without all the time and effort put in by Liphook's Bloomers. Perhaps you might be able to spend a little time helping next year? For further information please go to [www.liphookinbloom.co.uk](http://www.liphookinbloom.co.uk)

*Barbara Miller*





# Liphook Carnival 2016



*This years Carnival Queen.*



*The Emu Race which took first prize in The Walking Group category.*



*The Splash Cash and the Leprechauns was Liphook in Blooms entry and they won the Tim Wheatley Memorial Cup.*



*Donald Trump's visit to Trumpton by The Deer's Hut.*



# Where Are We?

Here is a little quiz showing some local items or places found in the Liphook/Bramshott area.

Can you find their exact location? We'll start you off with an easy one.



## ANSWERS

1. St. Mary's Church, Bramshott. The clock has only one face which can be seen from Church Road.
2. Oak leaf carved on the memorial bench for Elizabeth Thunbeck, situated in Radford Park.
3. A small gatehouse, the last surviving piece of an Elizabethan house known as Bramshott Place. It is now a focal point in the Bramshott Place retirement village.
4. Road sign showing a toad is visible in the mating season when many toads cross the road to reach the river, Tunbridge Lane (opposite The Mill House).
5. Scottish immigrant at Bramshott Vale Farm, off Tunbridge Lane.
6. A decorated window topping on a side window at 12 London Road, Liphook.
7. A toy Biffa truck is seen in the Heritage Centre. The Biffa refuse company was the donor of a sizeable grant which was added to the fund needed to set up the Centre in its early days.
8. This school bell is in Liphook Library and was used when the building was a mixed infant and girls' junior school.
9. The Well House, 5, Haslemere Road.
10. The bust of Flora Robson is now inside the Liphook Library having been moved there from its position outside the old post office (now the Sorting Office).





# Keats

independent estate agents

**keats.biz**

SURREY SUSSEX HAMPSHIRE LONDON

1a The Square  
Liphook  
Hampshire  
GU30 7AB

**sales:** 01428 724 343

**letting:** 01428 724 444

info@poochtrekker.co.uk  
www.poochtrekker.co.uk



**Pooch Trekker**  
dog sitting services tel: 07923531999

Old Barn Farm Cottage Hewshott Lane Liphook GU30 7SY



- Baby Massage Courses
- Mum and Baby Yoga
- Toddler and Children's Yoga
- Music and Movement for under 5s
- Song and Action for Babies and Crawlers

Liphook, Liss and Grayswood

vera@muzitots.co.uk www.muzitots.co.uk

Facebook: muzitots.co.uk

**0773 508 4771**



Specialising in the sale of all types of properties in Hampshire, Surrey and West Sussex.

**Hamptons Liphook**

10 The Square, Liphook, Hampshire GU30 7AH

Sales. 01428 768168

liphook@hamptons-int.com

[www.hamptons.co.uk](http://www.hamptons.co.uk)



*Beyond your expectations*

## CHIROPODIST (PODIATRIST)

Regular visits to Liphook and surrounding areas

**Patrick A. Brown** MBChA MSSCh

**Tel: 01730 821153**

Ryonen, Nyewood, Petersfield, Hants GU31 5JA

**Now in Liphook and here to help!**  
**BOOKKEEPING, PAYROLL, TAXATION  
& ACCOUNTANCY SERVICES**

**Tel: 01730 606511**

**Email: info@visoff.co.uk**



Visualize Office Solutions Ltd

Call in and see us at:  
Exchange House  
33 Station Road  
Liphook GU30 7DW  
[www.visoff.co.uk](http://www.visoff.co.uk)



# Heritage Centre News

There's still time to see the two main exhibits at the Heritage Centre as featured in the Autumn issue of the LCM. One celebrates the 500th anniversary of the Royal Mail, and the other celebrates the 100th anniversary of the arrival of author Flora Thompson to Liphook.

The President of the Petersfield Philatelist Society paid a visit to the Heritage Centre recently. He provided useful information for the current exhibit focusing on Liphook and the Royal Mail. Two visitors, who were philatelists themselves, came expressly to see the exhibit as a result of having read about it in the Petersfield Post. Another visitor, a member of the 'Letter Box Study Group', supplied the Heritage Centre with two model post boxes, both of which are on display.

The Heritage Centre has been entrusted with several photo albums of Liphook scenes, mainly of the 1970s and 1980s. These have been amassed by a former Liphook resident who had assisted Laurence Giles with his archives which, of course, form the 'backbone' of the HC's collection.

The town of Warsash, near Fareham, also has a Heritage Centre, which was started in 1998. Their representatives came to see the set-up in Liphook, and were impressed with the layout, the displays and the volume of information available.

The Heritage Centre has welcomed a new volunteer, Wilma Ridgwell. A Liphook resident for 46 years, Wilma is very interested in local history, primarily the history of her village, so helping out at the HC is ideal for her. As Wilma is not a computer user, she finds the work she's been assigned - going through archive boxes and ensuring that the right material is in the right box - is perfect

## LIPHOOK POST OFFICE (UNDER PETERSFIELD)



*The Post Office and Shop at Liphook in 1877.*

for her particular skills. The Heritage Centre is always grateful for helping hands - and those hands do not have to touch a computer!

The photograph accompanying this article is of Liphook's post office in 1877. The postmaster at this time was Alfred Fewtrell, and post office premises was in what is now Inwood Stoves.

The Heritage Centre is located on the first floor of the Millennium Centre. Opening hours: Monday and Friday, 10 - 12; Wednesday 2 - 4. Saturday morning: 10th December. No entry fee.

Email: [enquiries@liphookheritage.org.uk](mailto:enquiries@liphookheritage.org.uk) Tel.: 01428 727275.

*Mari Wallace*

## LIPHOOK & DISTRICT

# Model Railway Club

By the time readers see this, our 7th Annual Open Day "Model Trains in the Valley" will have been done & dusted and hopefully will have attracted enough visitors to cover its costs.

The Open Day is our chance to show off the club and its members model railway layouts.

This year we have invited our "neighbours" the Farnham & District Model Railway Club, to show their new O scale layout Haydon Square set in north London. This is our contribution to celebrating the 60 years since the Gauge O Guild was formed in 1956. It is now the largest single scale model railway club in the world with around 6000 members.

In the far off days of 1956 O scale was in danger of disappearing from the UK model railway scene. Today it is a vibrant scale, even if many of the modellers are in their second childhood! Many major manufacturers are now producing "ready to run" models in this scale - possibly many more than in the scales heyday of the 20's & 30's.

A few club members will also have had a trip in mid-November, to Cologne to attend a major model railway exhibition.. This is a city I first visited aged 13- when the main station was alive with steam engines of many types and West Germany was a few years out of

direct control by the Allies but still couldn't afford to import real coffee! The country's capital was then in Bonn a few miles up the Rhine.

After around 13 years as a member & holding various posts in the club, I have resigned from the club and with immediate effect Nick Harling will take over as Secretary.

Good Luck to Nick. I haven't given up on the hobby, so I may get some more time to work on the various layout projects I have & continue to make long railway journeys to mainland Europe..

Please continue to support the club- it's a great asset, to the local area!

*Tony Bettger*

**VILLAGE HALL**

**A.G.M.**

**26th January 2017 at 8.00pm**

**LIPHOOK VILLAGE HALL, HEADLEY ROAD**

# THE RIVER WEY TRUST

## From the Riverbed

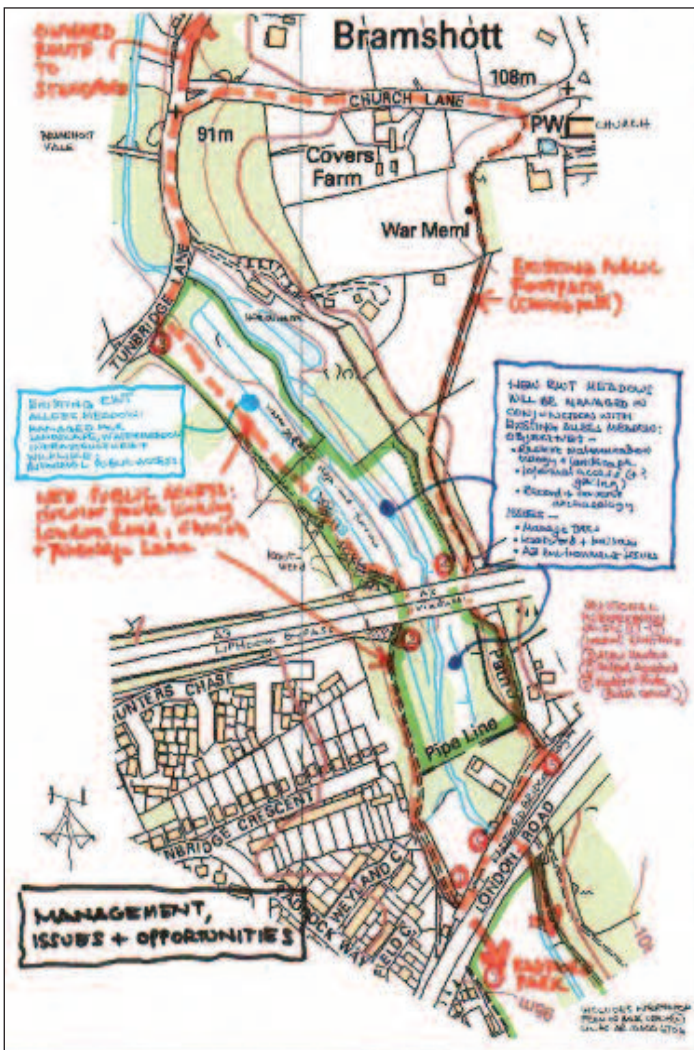
Those who attended our recent Annual Meetings or this year's Summer Party will have been told of our hopes of acquiring some 6 acres of land immediately upstream of our Allees Meadow at Bramshott: this further land runs almost up to the London Road (former A3) into Liphook - the A3 bypass viaduct crosses the river there. The land is part of a slightly larger area bought by GreenConstruct (from previous owners Danisco) - they want to build houses on a relatively small area of land by the London Road layby on the Liphook side of the river. On balance, we think that this is a good deal for the Trust (we would be given the land as part of a planning agreement) and, more importantly, for the community and wider interests such as securing continuity of river corridor, access, landscape and the watermeadow archaeology.

The matter is not of course for us to decide, and we understand that there will be an application for planning permission to East Hampshire District Council shortly.

If it happens, there will be plenty of management work for us to undertake, but those who know Allees Meadow or who remember this land from walks back in the 1980s will understand its potential - some of this and our aspirations are shown on the plan here.

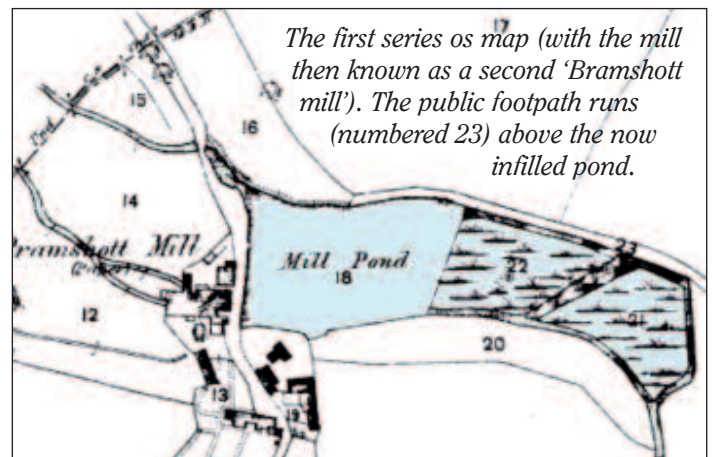
You can see more about GreenConstruct's proposals at:

<http://www.londonroadliphook.co.uk/londonroadliphook/>



### Passfield Mill

The Trust has joined with nearby residents in objecting to the way an extension to a factory building at the Passfield Mill Business Park has been carried out (Planning Permission still pending), extending the original main industrial building towards the river, with halfhearted screening when seen from the public footpath on the other side of the river. This is a particularly sensitive issue because Passfield Mill lies along one of the best stretches of the Southern Wey for the enjoyment and appreciation of the particular qualities of the river corridor, which are easily diminished by the impact of the industrial activities of the Business Park: upstream is the Passfield Sluice and Watermeadows in amongst the more recent alder woodland, with permissive access along the river bank from Passfield Road (with the public footpath a little farther 'inland'); downstream are the Hatch Farm Watermeadows (unwooded and open here) and Aqueduct, again with permissive access as well as the public footpath from Tulls Lane. In addition to the landscape issues, there are potentially environmental issues this close to the river. That said, the Mill has a long and distinguished history of industrial activity - there was originally a corn mill on the site. Later, in the 1580s the Hooke family from Bramshott Place established an iron forge from which cannon balls have been found, and it became a paper mill in 1684: the Warren family were papermakers here from the mid 1820s. The surviving "original" mill buildings are comparatively modern, dating from 1856 to 1876. A billhead from the 1880s advertised "paper and bags of all kinds made for every trade to order" including coloured papers, envelopes, account books, cards and note papers. Paper was made from rags (later wood-pulp) which were cut up, washed, and pounded to a pulp, originally by water-driven hammers and later in a rotating drum. The pulp was then boiled in a vat with water and other additives, according to the paper being made. The resulting mixture was scooped up in a tray with a fine wire mesh bottom, drained, and inverted on a layer of felt, and the resulting sheets pressed, dried, and hung on ropes suspended in drying lofts. The Warrens also had a printing press. From 1907 the mill produced postal order paper, and later the first Old Age Pension forms. Papermaking ceased in 1924 since when various light industries have occupied the site, with the millpond progressively filled in - this is the location of the current controversy, where the river runs along what was originally the northern edge of the pond, with the public footpath across the river on the right bank.







# Bohunt School



## BOHUNT OPEN EVENING BEATS PREVIOUS RECORD

Explosions in Science with John Tickle, the new Sixth Form building, the Bohunt Little Big Band, tales of expeditions, real-life Meer Kats and a Religious Studies teacher bathing in the 'Ganges' drew the largest crowds ever to Bohunt's Open Evening.

On Thursday 22 September more than 500 families flocked to Bohunt School in Liphook to enjoy their 'Festival of Learning' Open Evening. The atmosphere was electric with prospective students and their families immersing themselves in a range of exciting activities and experiences, guided and encouraged by the current Year 7 and 8 cohorts.

The evening was a chance for parents to immerse themselves in the wealth of opportunities, from outstanding academic provision to expeditions to Mongolia and Greenland; learn about how the house system allows individual students to be known, nurtured and challenged and hear about how results are rising - despite a declining national picture - due to the superb teaching that has led to Bohunt's Teaching School designation.

As always, it was a superb opportunity for students to bring their talents to the local community. The Big Band, who recently played the Haslemere Fringe; the iPad Band who performed to thousands in London; the winner of the HSBC Mandarin speaking competition; the students who presented on the main stage of the Royal Geographical Society, Gold Duke of Edinburgh Award holders and the national semi-finalists of the Schools Basketball Cup were all able to show off their talents to pupils from the local primaries and their parents.

Science once again put on a fantastic display of learning, ably assisted by John Tickle who returned to Liphook once again to perform a fascinating show of experiments and demonstrations. Visitors could interact with robots in IT, exercise their deductive powers in solving the English department's murder mystery and test their arithmetic and problem-solving skills in Maths' number-based fairground games. Other highlights included a chance to explore the globe interactively in humanities, debate global affairs with the student politics group and get stuck into the outdoors with demonstrations and talks from both staff and students involved in the varied Outdoor Education programmes.

Countless parents commented on the enthusiasm and professionalism of the young tour guides, many of whom have only been students at Bohunt for a matter of weeks, and were glowing in their praise of the older pupils who were leading sessions and activities across the curriculum range.

**Neil Strowger, Headteacher of Bohunt School, said:**

*"Our outstanding examination success, TES Award and featuring in Tatler's 2016 'Top State Schools' list has come about for a number of reasons, but in large part it is due to a culture of innovation, the provision of fantastic learning environments and a wealth of opportunities that develop leadership, ambition and self-esteem, as well as outstanding attainment. The level of interest in Bohunt this evening, and the superb summer results are testament to the hard work of our students and staff in making our ambitious educational vision reality."*

## NEW BOHUNT SIXTH FORM OPEN EVENING - A BIG SUCCESS

Bohunt Sixth Form Open Evening was well attended by in excess of 450 people. Students and parents had the opportunity to talk to A level subject leaders and teachers as well as to see the progress of the new building, which is located on the site of Bohunt School, as a separate, bespoke building.

The Sixth Form vision of personalised curriculum and high quality learning and teaching were at the centre of a presentation given by the CEO of Bohunt Education Trust, Neil Strowger and Head of Sixth Form, Clare Hodgson.

Students from Bohunt School and The Petersfield School were well represented alongside students from Ditcham Park, Amery Hill, Bedales and Churchers College.

There was also the chance for future students to find out more about programmes to support progression to university and enrichment offers such as Gold Duke of a Edinburgh award.

### Quotes from parents on the night:

**Tony Burns (a parent from Amery Hill)**

His son is looking at coming here instead of going to Alton (even though they live opposite). Looking for a new start, doesn't want to be with the same kids.

He commented on the enthusiasm of the Bohunt Staff on the night. Liked the fact that they were honest when asked questions, no blagging but admitted they didn't know how things were going to go/work as it was a new venture. Which he found very honest and reassuring.

He found teachers very inspiring about 6th form AND especially the next steps of moving on to University.

Some parents liked the fact that as it was a start-up (and with BET previous experience/history) it meant that there is no way it would fail - we just wouldn't let it! The counter argument to being guinea pigs . . .

They liked the fact that there would be smaller classes initially, so more individual support/interaction with 6th form staff.

The 2nd lighting guy said you could see the pink glow from the A3, and round at old Thorns.

Great to see TPS kids . . . and others too!

## Little Gems of Wisdom from Giles Brandreth

**Question:** What is your top tip for a happy marriage

**Answer:** Find a happy wife.  
A happy wife is a happy life.  
The way to keep a wife happy is to do as you are told.  
Failing that say sorry as often as you can.

# AMBASSADOR CLEANING SPECIALISTS

Quick Dry Deep Cleaning

Carpets, Rugs, Furnishings, Curtains

01428 722551

All types of flooring, including tile and grout, limestone, marble and granite

www.specialistcleaningcompany.co.uk

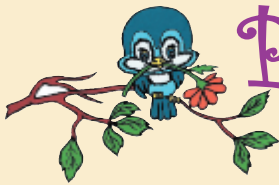
Proud members of

**Checkatrade.com**

Where reputation matters

Info@specialistcleaningcompany.co.uk

Family Business Est 1985



Peep  
Inside

Cards • Gifts • Chocolates • Toys  
Iron-on-Labels • Personalised Gifts  
Balloons • Banners and Sashes

22 Station Road, Liphook GU30 7DR

Telephone: 01428 722 233

www.peepinside.co.uk

## LIPHOOK BAKERY

We have available  
freshly made Pastries,  
Loaves, Sandwiches,  
Cakes and much, much more.

**We can do Sandwich Platters to order!**

26 Station Road, Liphook

Tel.: 01428 727771

Open: Tues, Wed, Thurs, Fri

6.00am till 4.30pm

Saturday 7.00am till 2pm

**NOW OPEN AT**

34B Station Road, Liss

Tel.: 01730 893175

Open: Tues, Wed, Thurs, Fri 8.30am till 2pm

Saturday 8.30am till 1pm

## liphook carpet warehouse

carpets • wood flooring • vinyls

**NOW OPEN**

Monday - Friday: 9-5 • Saturday: 10-3

Unit B, Bleaches Yard, Station Road, Liphook, GU30 7DR

(Down the road to the side of Countrywide, past Liphook Motors and to end..)

Tel: 01428 723513



CARPETS  
FROM  
£4.99 sqm



BIG STOCK  
OF  
REMNANTS



FREE  
MEASURE  
&  
ESTIMATE





# THE CHURCHES OF LIPHOOK WELCOME YOU TO THEIR SPECIAL CHRISTMAS SERVICES 2016



## Sunday 11<sup>th</sup> December

ANGLICAN  
St Mary's, Bramshott  
6.00pm Candlelit Carols and Readings  
(for adults & older children)

TOWER ROAD GOSPEL HALL  
6.30pm Carol Service

## Sunday 18<sup>th</sup> December

ANGLICAN  
St Mary's Bramshott  
10.30am Crib Service  
(specially for young children)

METHODIST CHURCH  
6.30pm Carols by candlelight

TOWER ROAD GOSPEL HALL  
6.30pm Carol Service

TRINITY CHURCH (at Liphook Junior School)  
10.30am Service of Carols & Readings

## Christmas Eve

### Saturday 24<sup>th</sup> December

ANGLICAN  
Church Centre  
6.00pm Christingle & Carol Service  
St Mary's, Bramshott  
11.00pm Candlelit Holy Communion

METHODIST CHURCH  
8.00pm Christmas Communion at Lindford  
Methodist Church

ROMAN CATHOLIC CHURCH  
6.00pm Christmas vigil

## Christmas Day

### Sunday 25<sup>th</sup> December

ANGLICAN  
St Mary's, Bramshott  
8.00am Holy Communion (BCP)  
9.30am Family Communion  
Church Centre  
10.30am Family Communion

METHODIST CHURCH  
10.00am Family Worship for Christmas

ROMAN CATHOLIC CHURCH  
10.15am Family Mass

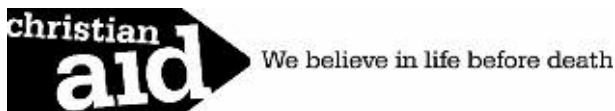
TOWER ROAD GOSPEL HALL  
10.30am Christmas Service at STANDFORD  
GOSPEL HALL

TRINITY CHURCH (at Liphook Junior School)  
10.00am Christmas Day Family Service

## Sunday 1<sup>st</sup> January

METHODIST CHURCH  
10.00am Worship for the New Year, led by  
members

TRINITY CHURCH (at Liphook Junior School)  
10.30am "Fearfully & wonderfully made"  
(for further details see Trinity Church website:  
[www.trinitychurch.tc](http://www.trinitychurch.tc))



Liphook Churches were able to send £633.00 to Christian Aid following our successful Harvest Supper and Harvest collections. We have funded projects to preserve water for farmers in Africa who are suffering drought conditions. Thank you to everyone who contributed.

The final total banked after Christian Aid Week was a splendid £4,836.63 and HMRC will have added another £447.50 from the Gift Aided contributions – well done Liphook, once again!  
*Brenda Halsey, village organiser.*





# THE CHURCHES OF LIPHOOK



## CHURCH OF ENGLAND

**Life** - This morning I got up to pray. I pray every day, usually quite early, and as I was crooning gently to the soft sounds of my guitar the dogs came in. Two of them jumped on the sofa, while the third paced around looking a bit nervous and then promptly sat down and did a wee all over my study floor. Bandits. And it's not the only time they've done it. Last Christmas, on the morning of Christmas eve I was groping around for a light switch on my way to morning prayer when I trod in a dog poo. I didn't have any slippers on. Happy Christmas! There was a year when our garden fence was blown down and one of our dogs took it into her head to do a runner, not once, but three times. She was so wily about it. She'd just pretend to be chillaxing around the veggie patch, and then you'd blink and she wasn't there. The fact that I had a heavy cold and that almost everyone seemed to be around in Liphook at the times she made her good escape, didn't seem to matter to her at all. She showed no mercy.

Aren't Dogs just a metaphor for life! Life can be so inconvenient. Everything can be going swimmingly and then we get a parking ticket, or we pick up a minor injury on the kids trampoline, or the washing machine breaks down. And the more these things happen the less funny we find them. The more serious we

become. The more we find ourselves slowly losing our sense of humour. The problem is its only going to get worse! I know this because I have all sorts of conversations with people whose lives are falling apart. It might be slow, it might be quick but it happens to us all, and the tragedy is that we can easily if we're not careful end up looking back on our lives realising how incredibly blessed we were. Looking back on our happiest moments, and seeing that we never stopped to notice them.

How can we stop the rot! The answer is so simple, just give thanks. Thankfulness is the enemy of the boring and the sensible, it's the enemy of the mundane and the serious. At its root is a recognition that most of the most important things in life, our relationships, our health, the gifts we've been given are beyond our control, and that all we can do in response to such blessings is be thankful. So I thank God for my dogs, for inappropriate weeing that gave me great subject matter for this article, for all that they do that is inconvenient and annoying and that reminds me that I've got to stop taking myself so seriously and just give thanks to the great Father who gave me all that I have and all that I am.

*Rev. Valentine Inglis-Jones*

## TRINITY CHURCH

### No Ordinary Birth . . . No Ordinary Life . . .

I've been reading some of the latest 'Christmas Material' that has been published and one booklet asked the question: "If you were God and you wanted to introduce yourself, how would you do it?" Imagine asking this question to a class full of seven year-olds. I wonder what sort of responses you'd get? A crash of lightning? Something written in the sky? . . . Or "Be born as a baby?" So the central thought is that Christmas is about God 'Introducing Himself' to mankind but is that really what Christmas is about?

In our main teaching series we tend to work through a book of the Bible and as it happens this year we find ourselves approaching, 'Passion Week' at the end of Luke's Gospel as Jesus goes to the cross. Now based on the premise I started with God's 'introduction' doesn't seem to have gone too well?

As I thought about these two events (Christmas and Easter) I was struck by the disconnect that has taken place over the years (commercialisation has certainly played its part), perhaps in

particular for those seven year-olds!

You see God has introduced Himself to each one of us by creating us as creative, thinking, moral beings; the problem is we are now flawed by sin and relationship with God is broken. We are also told that God has 'introduced' Himself in everything that He has made and done. We live in an area of great natural beauty, that for those who will see it . . . Has God's stamp all over it.

Christmas isn't about God introducing Himself; it's the beginning of a story of 'redemption', God restoring that which was broken, the story itself begins way back in Genesis but at Christmas the intervention by God begins with an extraordinary birth; an extraordinary life and an exceptional death and resurrection . . . Now we can indeed be 'introduced' to God on a personal level through Jesus Christ . . . And Him alone. This year, keep your Easter close to your Christmas and see the difference it can make!

*Love in Christ, Pastor Jim Downie*





## CATHOLIC CHURCH

As I write this, we are preparing to celebrate the time of Advent when our liturgies focus on the feast of the Coming of Our Saviour. We try to step aside in prayer from the secular Christmas rush which has so disfigured the true meaning of the coming feast. My mind goes back to the beautiful XIVth century English poem. "Sir Gawain and the Green Knight" to the passage where Gawain, on his mysterious quest finds himself on Christmas Eve riding alone through the forest and longing to find somewhere to celebrate the Christmas feast:

**Beginning . . .**

*By a mount in the morn merrily he rides  
into a forest full deep that truly was wide,*

**and later: . . .**

*Being concerned for his plight,*

*lest he never should see the service of that Sire,  
that on that self night, a bright maid was born  
our burden to quell.*

*And therefore sighing he said; "I beseech thee, Lord and  
Mary, that is mildest mother so dear,  
of some harbour where highly I might hear Mass  
and thy Matins tomorrow, meekly I ask,  
and thereto promptly I pray my Pater and Ave  
and Creed".*

It is hard to imagine how counter-cultural the Christian approach to Christmas can be in contrast to the tinsel jollity of the secular celebration. That is why we try to make this time of Advent one of effort to step aside for some extra reflection and prayer to catch the true meaning of our Christmas feast.

*Rev Mgr Provost Cyril Murtagh*

## TOWER ROAD GOSPEL HALL

Shepherds and sheep feature often in the Bible. Many of the great leaders in the Old Testament times were originally shepherds, such as Joseph who became second in command to Pharaoh Moses, he who led the children of Israel out of Egypt; and David who was anointed King over Israel, to name a few.

It's not surprising then that shepherds no doubt very caring people had the great privilege of being told personally by the Angel of the Lord that "Today in the town of David a Saviour has been born to you; he is Christ the Lord" – Luke 2 v 8-11.

Christmas is a happy time when we celebrate the birth of our Saviour, but I am also reminded that Christ was born into this world for a specific purpose. Jesus likened himself to a shepherd. "I am the good shepherd", he said. "The good shepherd lays down his life for the sheep". - John 10 v 11. Again in verse 18 Jesus is

saying "No one takes it from me, but I lay it down of myself. I have power to lay it down and I have power to take it again". So, although Jesus was put to death and was laid in a tomb, he arose the third day and returned eventually to Heaven at the right-hand of God his Father to intercede for us.

As we celebrate this Christmas, may we realise that this baby was born so many years ago, grew up to become the Good Shepherd who gave his life for our redemption. May Christmas be a happy time for us knowing that the Lord Jesus is a caring, loving Shepherd as we trust Him.

*RJM*

## METHODIST CHURCH

There are some events which we know changed the course of history. The Battle of Hastings in 1066 would be one event without which we know that British history would be very different. Some of those events seem relatively small in themselves but afterwards we can look back and describe them as 'defining moments'. They're in some way representative of what followed which grew out of all proportion to the original events. The day Rosa Parkes refused to give up her seat on a bus would be one such event. Perhaps nailing a document for public discussion to a church door would be another seemingly insignificant event but it sparked the Reformation.

But what about your life? What are your defining moments? What made you what you are? Many people point to major life-events like getting married or having children. Others can identify what set them on their chosen career path. Some mention a conversation or comment from a teacher or minister. Even others say it was a dissatisfaction with how someone else did something that made them think 'I could do that better than that'.

And what about faith or belief? Are there moments or events that have defined how you approach the big questions of life?

Perhaps even more important, are you on the lookout for defining moments still – times when something makes you stop and think and perhaps change course?

*David Muskett*

## GRAYSHOTT DECORATIVE AND FINE ARTS SOCIETY

offers you the opportunity to learn more about  
the decorative and fine arts:

- Attend regular lectures at Grayshott Village Hall on the first Thursday of the month at 2.00 p.m.
- Enjoy stimulating study days and tours.
- Meet new friends with similar interests.
- Take part in a range of volunteer activities.

**Jan 5** 'For the Inspection of the Publick' - *Helen Hillyard*

**Jan 18** **Visit** - National Portrait Gallery - Picasso's Portraits

**Feb 2** 'Seurat . . . DOT . . . DOT . . . DOT' -  
*Eveline Eaton*

**Mar 2** 'An Ideal Partnership: Lutyens & Jekyl' -  
*James Bolton*

**Visitors are very welcome. Their fee at lectures is £7**

For more details contact Caroline Young on

**01428 714276**

or look on our website

[www.grayshottdfas.org.uk](http://www.grayshottdfas.org.uk)



**ROBERT HERRON BDS.DPDS**  
DENTAL SURGEON

**PRIVATE DENTAL  
CARE  
FOR ALL THE FAMILY**

DENTAL PRACTICE  
6, HASLEMERE ROAD  
LIPHOOK, GU30 7AL

TEL: 01428 723096

**NEW PATIENTS WELCOME**

PLEASE TELEPHONE FOR A  
PRACTICE BROCHURE.

# Liphook Art & Framing

**Tel.: 01428 724331**

47 Headley Road, Liphook, Hampshire GU30 7NS  
artwork@uwclub.net www.liphook-picture-framing.co.uk

*Bespoke In-store Workshop Framing • Art Gallery  
Numerous Artists Materials • Limited Edition Prints  
Stationery • Greetings Cards • Gifts  
Craft Kits (Candle Making, Airfix, Painting by Numbers etc.)  
Photocopying • Ready Made Frames • Mount Cutting*

9.30am - 5.00pm Monday to Friday (closed Wed afternoon).  
9.30am - 3.00pm Saturday. Free Parking.

## Kate Land

Master Nail Technician  
with over 15 years experience  
Specialising in natural looking nails

- Shellac
- Bio Sculpture Gel
- LCN Hard Gel
- Fibreglass
- Pedicure & Manicure

**Liphook 07767 334034**



# Picalily GARDENING

*Hate Mowing, Weeding, Hedge Cutting, etc.  
...We Love it Here at Pic-a-lily*

Let Us take the backache out of having a lovely garden. With our friendly, flexible, personal service, we offer anything from weeding to garden clearance. No job too large, no job too small.

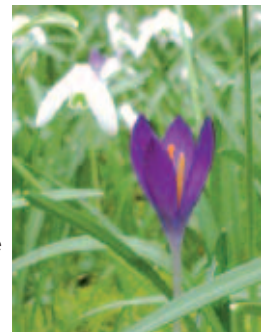
*Rain or shine you'll see us out there!*

**We can supply decorative bark, shingle, slate, etc.  
Composts and top soil. Fencing, trellising, etc.**



*All your Garden needs -*

- Mowing, strimming and turfing
- Hedge cutting, pruning to small tree removal
- Weeding to rotavating
- Plant and shrub care
- Leaf clearing to garden clearance
- Green waste removal
- Gutters and drains
- Paths, patios and drives, created and cleaning
- Fencing, panels, chestnut, post & rail, closed board etc.



*A vast range of plant material at very competitive prices*

*For a free friendly quote call Pete on:*

**0777 587 4988 / 01730 894429**

*Email: picalilygardening@gmail.com Web: pic-a-lily.co.uk*



# Love to Sing



Did you know that Liphook has its very own choir? It's called 'Love to Sing' and has a total of some 60 members. Vanessa Breach started the choir six years ago with her great friend and pianist, Chris Booth, and gave it the name, 'Love to Sing', because that's just what it's all about - a choir for people who simply love to sing, with no auditions or previous experience required. The repertoire is wide: musical theatre, gospel, rock and pop, operetta, jazz, classical, folk, carols. Vanessa loves to introduce new styles to the choir, and welcomes members' suggestions.

Vanessa is a woman of many talents. In addition to the choir, she also runs the MAD (Methodist Amateur Dramatics) Company who, as most of you know, put on a yearly panto that's always a sell out . . . as well as the Liphook Theatre Club, for children ages 5-11.



Vanessa has always sung, and sang professionally until starting a family. When she moved to Liphook, she studied with Heather Keens, who is an opera singer and music teacher. She briefly attended Rock Choir and, on television, keenly observed Gareth Malone's methods of creating wonderful choirs of disparate people - all of which contributed to her desire to embark on her own project.

Here's how it works. Vanessa teaches the songs at the regular Wednesday evening session and also provides CDs of rehearsal tracts for altos and for sopranos. The men in her choir generally sing with the sopranos, but an octave lower. Traditionally, sopranos sing the melody of a song but she swaps things around so that the altos get a chance to sing the melody, and the sopranos get to sing the 'more challenging' harmonies that are usually sung by the altos. Members pay £7 for each session which covers Vanessa's time and input, and costs such as the rental of the hall, making the CDs and printing off lyric sheets. There is no sheet music because of copyright restrictions.

The choir performs regular concerts, mainly for charities such as Macmillans, Action for Children, Fletchers Field, the Over 60s Club, the Day Centre. They recently performed a concert in aid of the Dreams Come True charity. Vanessa also had plans for the choir to sing at the Christmas market in the Millennium Centre on 26th November - unfortunately, it was too late to advertise in the Autumn issue of the LCM. If contracted to sing for entertainment, rather than for a charity, Vanessa will charge a fee but this will then be used to fund the choir's party.



Vanessa feels it's time to bring Gilbert & Sullivan to Liphook by means of an ensemble cantata version of 'Pirates of Penzance'. Her plan is for the 'Love to Sing' choir to do the singing, MAD members to take on the main roles, and the children of the theatre club to add to the chorus and do some acting. Watch this space!



When asked if there were any memorable events since starting the choir, Vanessa proudly tells me that two members met and married as a result of joining. The choir sang at their wedding - as a 'flash mob'. This is when a group of people assemble in a public place (as at a wedding) and individuals suddenly pop up and sing or perform for a brief time, then disperse. I've never experienced a 'flash mob' but have certainly been entertained by them on Youtube.

If you are interested in finding out more about 'Love to Sing', then come along for a free 'taster' session. The choir meets on Wednesday evenings from 7.30 - 9.30 in the Liphook Methodist Church Hall (next to the Library, in the London Road).

Contact Vanessa: [vanessakbreach@gmail.com](mailto:vanessakbreach@gmail.com).

Telephone: 01428 722813 or 0776 608 3862

*Mari Wallace*

## EVENTS AT THE

# Millennium Centre, Liphook

### FILM NIGHT

*1st Friday of each Month for Film Nights*

<b>December</b> Friday 2nd	<b>Eye in the Sky</b> Starring Helen Mirren and Alan Rickman
<b>December</b> Sunday 18th	<b>Family Christmas Film</b> Polar Express 3pm
<b>January</b> Friday 6th	<b>Love &amp; Friendship</b> Starring Kate Beckinsale
<b>February</b> Friday 3rd	<b>Bridget Jones Baby</b> Starring Renée Zellweger, Colin Firth Patrick Dempsey
<b>March</b> Friday 3rd	<b>Sully (true story)</b> Starring Tom Hanks
<b>April</b> Friday 7th	<b>Queen of Katwe (true story)</b> A Disney Production

### COMMUNITY COFFEE MORNINGS

*A chance to get out and make new friends at the Millennium Centre*

**Friday 18th and Friday 16th December**  
10.15am - 12.15am - *Donations to cover costs*

### DISCO SKATE

*Roller skating at the Millennium Centre*

**28th November** from 6pm - 9pm

**16th December** from 6pm - 9pm

**21st December** from 5pm - 9pm

All age groups welcome, there is a £4 charge per person - the hire of skates are included in the price, to ensure everyone enjoys these event we advise that the younger skaters come along earlier, with teens and adults later on through the evening.

### OTHER EVENTS

**December**  
Tuesday 20th  
Professor Potty and the worlds Doziest Dog will be appearing at the Centre (this event is for 4 - 8 year olds). *For details please contact us.*

For details of any of the above events, or if you would like to make suggestions for events at the Liphook millennium Centre please email:

[Events.manager@bramshottandliphook-pc.gov.uk](mailto:Events.manager@bramshottandliphook-pc.gov.uk)

## THE LYNCHMEREANS PRESENT THEIR 69TH PANTOMIME

# Little Red Riding Hood

**AT THE HARDMAN HOYLE MEMORIAL HALL, HAMMER ON**

**Monday 26th December Matinee at 2.30 p.m**

**Tuesday 27th December Matinee at 2.30.p.m**

**Wednesday 28th December Evening at 7.00 p.m**

It's that time of year again folks! Time for the Lynchmerean's 69th pantomime, which this year is Little Red Riding Hood! Follow us on our journey into the woods, across the glen and over many a mossy knoll in our unique retelling of a classic tale where we meet not only Little Red Riding Hood but the Three Little Pigs, Hansel and Gretel and a whole host of other beloved fairy tale characters all trying to stay out the clutches of the Big Bad Wolf. What you think you know will be turned on its head as we discover what really happened at Granny's cottage, who was really to blame for all the huffing and puffing and what really lies at the end of a trail of bread crumbs. Could it be that the Big Bad Wolf is not so big and bad after all? Is a little girl in a red hood all she seems? Is there such a thing as too many puns???

These questions, and many more, will be answered at Hardman Hoyle Memorial Hall on the **26th, 27th and 28th of December**, and trust us, we will not disappoint. You'll shriek with laughter and wriggle with excitement and you'll leave the show with a song in your heart and a spring in your step. But don't take our word for it! Come and see for yourself!

Seats may be reserved from the Box Office:

**Elizabeth and Stuart Ibbotson at 17 Marley Coombe Road. Telephone: 01428 658179**

**Email: [elizabethibbotson@btinternet.com](mailto:elizabethibbotson@btinternet.com)**

**TICKETS PRICES ARE £6.50 EACH. FAMILY TICKETS TO INCLUDE AT LEAST ONE CHILD £5 EACH, GROUP TICKETS (10 OR MORE) £4.50 EACH**



NEWS FROM THE FEDERATION OF  
*Liphook Infant & Junior School*



*Pupils enjoying their first term at school.*



*Year 2 investigating Durleighmarsh Farm to find out more about the harvest.*



*Lots of children from across the federation enjoy taking part in Tri-hi, the triathlon club.*



*Pupils in Year 6 enjoying their residential trip to Calshot activity centre, where they participated in lots of activities including climbing, sailing, snowboarding, skiing and archery.*



*Pupils in Years 5 and 6 learnt how to restart a heart.*



*Children from Years 2 and 6 achieved their civic award, this is a precursor to The Duke of Edinburgh Award scheme.*



*Junior road safety officers lead assemblies and promote road safety to pupils throughout the federation.*



*Copy and picture courtesy of Jacky Taylor*



## 25 YEARS OF LIPHOOK'S MAD COMPANY, TRADIT

# *There is nothin*

This year saw the 25th (Silver Anniversary) pantomime production from Liphook's Methodist Amateur Dramatic (MAD) Company, written and directed by Vanessa K Breach. With vibrant, packed audiences at full capacity, The MAD Company were delighted at such strong levels of support at their anniversary show.

The show was set in the kingdom of Butterscotch where life was sweet. In the village of Caramel, owner of the village bakery Dame Eccles (David Jenner) could barely keep her hands off Cooper the Barrel-maker (Kevin Stephenson) and made an extravagant promise to the sweetly ineffectual King Marzipan (Tony Robinson) and his money loving wife Queen Madeleine (Mandy Coluccia) that his daughter could solve all their money

worries by turning straw into gold. But how could his daughter, the beautiful Victoria (Becca McGregor) ever do that and marry her true love, the dashing Prince Florentine (Arran Treacher Evans). All was surely lost? Oh no it wasn't! Enter a magical chap by the name of Rumpelstiltskin (Caroline Thompson), but there was a price to pay for his help. The Royal baby! Unless someone could guess the name of the cheeky chap. Thankfully friendly Simple Simon (Grace Jenner) could 'Talk to the Animals' and with the help of lovely Buttercup the Cow (Bethany Leybourne) was able to save the day and the Royal baby, by sending the small chap packing. The show was as ever a heart-warming, feel-good production, with humour, magic and fairy tale characters, as well as a timely reminder of the importance of keeping your promise.





# IONAL PANTOMIME FOR THE LOCAL COMMUNITY

## *g like a Dame!*

MAD Company productions are well known for their amazing sets and costumes. Five themed dame costumes, the most sparkly golden dress a Princess has ever worn, 1920s flapper dresses, ballroom scenes and glow in the dark skeletons, the show was a true feast for the senses. Vanessa K Breach, Writer & Director added: "This year we celebrated our Silver Anniversary with our 25th annual pantomime. It's fair to say that we love it as much today as when we started in 1992, with many of the original founding group still involved. The sense of family within The MAD Company makes working together an absolute pleasure. This year we have a new venue at Liphook's Millennium Hall and we are adding an extra weekend matinee performance on the Sunday, as these are so popular. We hope you enjoy!"

### LOOKING AHEAD

The MAD Company return to the stage with Cinderella, on **Friday 24th - Sunday 26th February 2017**, at new venue, **Liphook Millennium Hall, GU30 7LD**.

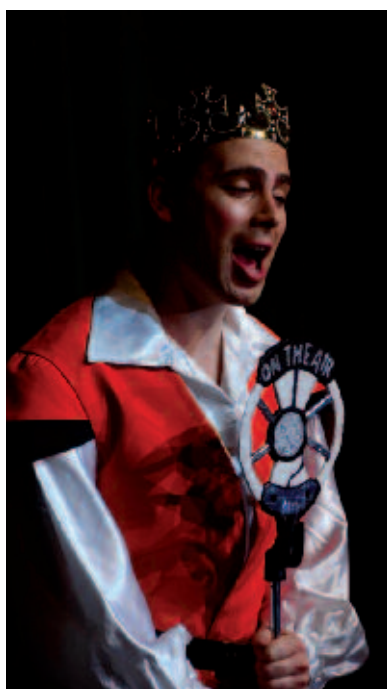
**Tickets:** £10 adults (£6 concessions) are available from 1st December 2016 at:

[www.thelittleboxoffice.com/MAD](http://www.thelittleboxoffice.com/MAD)

or ring Jo on **01730 263152**.

All other enquiries to: [madpantomime@gmail.com](mailto:madpantomime@gmail.com)

*Photos below are from The MAD Company's 2016 production of Rumpelstiltskin.*





## BL&DHS BEST IN SHOW

# Chairman's Fuchsia Wins

Bramshott, Liphook & District Horticultural Society held their final show of the year on Saturday 3rd September at the Church Centre, Liphook. The committee was delighted with the very high standard of entries, which was also echoed by the two judges, Mrs S Rapley and Mr J Eckton. The tables were full to the brim with beautiful flowers of all colours and superb vegetables.

Chairman, Lesley Hollands, was very surprised and delighted to win The Lady Skelhorn Trophy for her magnificent, rather large fuchsia along with the Cookery Cup and the WA Coyte Trophy for pot plants. Ann Haussauer was also delighted to win 2 cups and 2 medals including both the silver and bronze medals for her perfect Dahlia exhibits. Joining in with her success was husband Ian who won the Bob Bell Trophy for being the most successful

exhibitor in the vegetable classes. John Gilbert won the silver medal of the National Vegetable Society for his splendid exhibit in the coloured potato class. He also won the Vian Cup for his exhibition shallots.

The floral art classes this year were entitled Memory Lane, Sunset and for beginners, Explosion of Colour. Kat Bicknell won two firsts to win the Floral Cup. Her daughter Chloe was joint winner with Archie Gooding in the under 8 children's classes. The Judge Susan Harris was very impressed with Archie's decorated cup cake and accompanying jelly worms!

Further information about the Society can be obtained from Helen Brown on **01428 722875**.

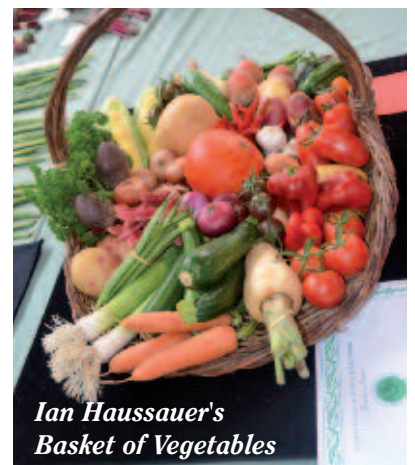
*Anne Govier*



*Katerina Bicknell's winning entry in 'Explosion of Colour'*



*The dahlia exhibits*



*Ian Haussauer's Basket of Vegetables*



*Tomatoes*



*The cut flower and fuchsia classes*



*Carol West's winning cluster roses*



*The Mini Beast Monster class*



*Parsnips*





*Ann Haussauer's entry in the mixed cut flower class*



*The vegetable exhibits*



*This pumpkin's almost as big as me - Thomas Simmons admires Leslie Hollands's pumpkin*



*Ann Haussauer with the Countess of Brecknock cup for the flower classes*



*Chloe Bicknell with the Betty Coyte cup which she shared with Archie Gooding*

## RESULTS

- 101: **Runner Beans** - 1st Ian Haussauer, 2nd Terry Burns, 3rd Heather Bicknell  
 102: **Beetroot** - 1st John Gilbert, 2nd Terry Burns, 3rd Hazel Simmons  
 103: **Cabbages** - 1st Ian Haussauer, 2nd No Entry, 3rd No Entry  
 104: **Carrots** - 1st Terry Burns, 2nd John Gilbert, 3rd Ian Haussauer  
 105: **Leeks** - 1st Terry Burns, 2nd Ian Haussauer, 3rd Lesley Hollands  
 106: **Onions, Large** - 1st John Gilbert, 2nd Lesley Hollands, 3rd Robert Ilsley  
 107: **Onions, Small** - 1st John Gilbert, 2nd Roy West, 3rd Robert Ilsley  
 108: **Onions, red** - 1st Lesley Hollands  
 109: **Parsnips** - 1st John Gilbert, 2nd Terry Burns, 3rd Ian Haussauer  
 110: **Potatoes, white** - 1st Ian Haussauer, 2nd John Gilbert, 3rd Terry Burns  
 111: **Potatoes, coloured** - 1st John Gilbert, 2nd Terry Burns, 3rd Ian Haussauer  
 112: **Shallots, exhibition** - 1st John Gilbert, 2nd Hazel Simmons, 3rd Sally White  
 113: **Shallots, pickling** - 1st John Gilbert, 2nd Ian Haussauer, 3rd Terry Burns  
 114: **Tomatoes, Medium** - 1st Ian Haussauer, 2nd Terry Burns, 3rd Robert Ilsley  
 115: **Tomatoes, Small** - 1st John Gilbert, 2nd Terry Burns, 3rd Ian Haussauer  
 116: **Tomatoes, Other** - 1st Ian Haussauer, 2nd Ian Patterson, 3rd Terry Burns  
 117: **Sweetcorn** - 1st Lesley Hollands, 2nd Ian Haussauer, 3rd Katerina Bicknell  
 118: **Any Other Vegetable** - 1st John Gilbert, 2nd Terry Burns, 3rd Ian Haussauer  
 119: **A Basket of Veg** - 1st Ian Haussauer, 2nd John Gilbert, 3rd Hazel Simmons  
 120: **Cut Flower & One Veg** - 1st Ian Haussauer, 2nd John Gilbert, 3rd Robert Ilsley  
 121: **Longest Runner Bean** - 1st John Gilbert  
 122: **Heaviest Pumpkin** - 1st Lesley Hollands  
 123: **Blackberries** - 1st Brian Simmons  
 124: **Any other Soft Fruit** - 1st Sally White, 2nd Anne Govier, 3rd Lesley Hollands  
 125: **Apples, Cooking** - 1st Anne Govier, 2nd L Futcher  
 126: **Apples, Dessert** - 1st Anne Govier, 2nd Hazel Simmons, 3rd Lesley Hollands  
 127: **Any Other Fruit** - 1st Ian Haussauer, 2nd Anne Govier, 3rd Lesley Hollands  
 128: **Roses, Large One** - 1st Ann Haussauer, 2nd Dr J Shaw, 3rd Miranda Rowe  
 129: **Roses, Large Three** - 1st Ann Haussauer, 2nd Lesley Hollands  
 130: **Roses, Cluster** - 1st Carol West, 2nd Lesley Hollands, 3rd Judith Patrick  
 131: **Chrysanthemums 3** - 1st Dave Long  
 132: **Chrysanthemums spray 3** - 1st Ann Haussauer, 2nd Anne Govier, 3rd Dave Long  
 133: **Chrysanthemums spray mix 3** - 1st Ann Haussauer, 2nd Dave Long, 3rd Anne Govier  
 134: **Dahlias, decorative** - 1st Ann Haussauer, 2nd Ian Patterson, 3rd Margaret Ilsley  
 135: **Dahlias, cactus** - 1st Ann Haussauer, 2nd Martin Bell, 3rd Brian Simmons  
 136: **Dahlias, pompon** - 1st Ann Haussauer, 2nd Ian Patterson  
 137: **Dahlias, Colletterte** - 1st Ann Haussauer  
 138: **Dahlias, waterlily** - 1st Ann Haussauer  
 139: **Dahlias, mixed** - 1st Ann Haussauer, 2nd Martin Bell, 3rd Margaret Ilsley  
 140: **Michaelmas Daisies** - 1st Heather Bicknell, 2nd Miranda Rowe, 3rd Ann Haussauer  
 141: **Cut Flowers Mixed** - 1st Ann Haussauer, 2nd Miranda Rowe, 3rd Anne Govier  
 142: **Cut Flowers 3 kinds** - 1st Ann Haussauer, 2nd Sally White, 3rd Heather Bicknell  
 143: **Shrubs 3 kinds** - 1st Mrs Judith Patrick, 2nd Mrs Anne Govier, 3rd Mrs Ann Haussauer  
 144: **Fuchsia** - 1st Lesley Hollands, 2nd Frances Town-Jones, 3rd Mrs Anne Govier  
 145: **Pot Plant Flowering** - 1st Mary Eyre, 2nd Margaret Ilsley, 3rd Lesley Hollands  
 146: **Pot Plant Foliage** - 1st Mary Eyre, 2nd H Brown, 3rd Robert Ilsley  
 147: **Orchid** - 1st Anne Govier, 2nd B Holt, 3rd H Brown  
 148: **Dahlia, grown from cutting** - 1st Lesley Hollands, 2nd Mrs H Brown, 3rd Margaret Ilsley  
 149: **Explosion of Colour (Beginners only)** - 1st Katerina Bicknell, 2nd Robert Ilsley  
 150: **Memory Lane** - 1st Margaret Ilsley, 2nd Wendy Evans  
 151: **Sunset** - 1st Katerina Bicknell, 2nd Margaret Ilsley, 3rd Wendy Evans  
 152: **Mint Jelly** - 1st Ian Patterson, 2nd Lesley Hollands, 3rd B Holt  
 153: **Red Onion Marmalade** - 1st B Holt, 2nd Lesley Hollands, 3rd Margaret Ilsley  
 154: **Plain Scones** - 1st Lesley Hollands, 2nd Miranda Rowe, 3rd B Holt  
 155: **Iced Fingers** - 1st Lesley Hollands, 2nd Katerina Bicknell, 3rd B Holt  
 156: **Mary Berry's Ultimate Chocolate Fudge Cake** - 1st Lesley Hollands, 2nd B Holt, 3rd Katerina Bicknell  
 157: **Muesli Flapjacks (Men only)** - 1st Ian Patterson  
 158: **Mini Beast Monster U8** - 1st Ilsa Eyre, 2nd Elsie Eyre, 3rd Archie Gooding  
 159: **Autumn Colour Collage U8** - 1st Celia Inward, 2nd Archie Gooding, 3rd Chloe Bicknell  
 160: **Decorated Cupcake U8** - 1st Chloe Bicknell, 2nd Sarah Bicknell, 3rd Archie Gooding
- HIGHLY COMMENDED:**  
 Terry Burns - Class 106 and 112    Ian Patterson - Class 110  
 Sally White - Class 117    Carol West - Class 141  
 Robert Ilsley - Class 144    Heather Bicknell - Classes 141 and 145  
 Sarah Bicknell, Chloe Bicknell - Class 158    Jasmine McKechnie - Class 159  
 Ilsa Eyre and Elsie Eyre - Class 160  
**Vian Cup for Exhibition Shallots:** John Gilbert  
**Bob Bell Trophy for Vegetables:** Ian Haussauer  
**Silver Medal of the National Vegetable Society:** John Gilbert for Class 111, Coloured Potatoes  
**Silver Medal of the National Dahlia Society:** Ann Haussauer for Class 135, Cactus Dahlias  
**Bronze Medal of the National Dahlia Society for most consistent Dahlia exhibitor:** Ann Haussauer  
**Reg Elliott Trophy for Cut Flowers:** Ann Haussauer  
**Countess of Brecknock Cup for the Flower Classes:** Ann Haussauer  
**WA Coyte Trophy for Pot Plants:** Leslie Hollands  
**Lady Skelhorn Trophy for Best Exhibit in Flower, Fruit and Vegetable classes:** Leslie Hollands for Class 144, Fuchsia  
**Floral Cup:** Katerina Bicknell    **Cookery Cup:** Leslie Hollands  
**Betty Coyte Cup for children under 8:** Chloe Bicknell and Archie Gooding



# SK Electrical & Security Systems Ltd

- Electrical installation, test & inspection
  - Security system installation
  - Heating/Ventilation



For an electrical contractor with over 30 years experience call us on

**01428 725536**

[info@skelect.co.uk](mailto:info@skelect.co.uk)  
[www.skelect.co.uk](http://www.skelect.co.uk)



## SMALL WORLD VET CENTRE PHILL ELLIOTT BVM&S MSc MRCVS

32 STATION RD, LIPHOOK, GU30 7DR  
 t: 01428 788659

- Complete vet care, all in one location
- Separate facilities for dogs & cats
- 15 minute appointments
- 24 hour on-site emergency care provided to registered clients by your own vet & nurses



**£10 OFF** YOUR FIRST CONSULTATION  
 WHEN YOU REGISTER WITH THIS ADVERT  
**QUOTE LCM03**

Small World Vet Centre
 @smallworldvets
 Small World Vet Centre

# C.J. Hampshire

**Tel: 01428 722416**

email: [mail@cjhampshire.co.uk](mailto:mail@cjhampshire.co.uk) [www.cjhampshire.co.uk](http://www.cjhampshire.co.uk)

- We price match
- Experienced staff
- Competitive prices
- All leading brands supplied
- Free local delivery
- Member of Euronics
- Specialist agents for Miele and Panasonic
- Free installation excluding built in and gas appliances
- Television installation and set up
- Free quotes and advice to replace built in appliances
- Qualified service engineers able to repair most brands



**OPEN ALL DAY**

Monday-Friday 9am to 5pm, Saturday 9am to 3pm

▶ Washing Machines ▶ Fridges/Fridge Freezers ▶ Dishwashers ▶ Vacuum Cleaners ▶ Televisions ▶ DVDs ▶ Radios



YOU CAN NOW FIND US AT  
**28 STATION ROAD,  
 LIPHOOK, GU30 7DR**





# Churcher's College

## A SPECIAL READING WORKSHOP

*The Reception Class at Churcher's College Junior School were thrilled to welcome their parents and visitors to their new classroom for a special Reading Workshop.*

Everyone enjoyed learning more about teaching and learning sounds and letters in Class R with an opportunity to see the children's learning in action; joining in with games, puzzles and a whole range of creative activities. It was so wonderful to welcome the parents to the school and demonstrate how



important the partnership between school and parents is at Churcher's College Junior School. Learning to read is one of the most important skills that the children develop in the early years and throughout their time in the Infant Department and we are very fortunate that parents contribute greatly to this process. The children dressed up as a favourite character from a book and enjoyed some cosy reading time with their parents before leaving. What a lovely afternoon!

## OWL AND PUSSYCAT ARTS WEEK

*An air of excited anticipation enveloped the school as Arts Week began. This annual event takes place in the Autumn Term and for the week the whole school curriculum is based upon a theme.*

This year the week was based on Edward Lear's Poem "The Owl and The Pussy Cat" to celebrate the opening of Churcher's College Nursery School in January. The Nursery will have the youngest Churcherians joining the Pussycat class and the older infants will become Owls.



In every classroom lessons were linked to the poem and the enthusiasm of children, teachers, parent helpers and visitors was evident at every turn. Lessons were linked to all curriculum subjects and also to topics already part of the programme of study.



Sharon Hurst, local watercolour artist worked with the Year 3 pupils to create an amazing trio of silk banners and then gave a master-class in silk painting to Year 5. The pupils were delighted with their silk sun catcher owls that will form a chandelier in the Nursery.

During the week Year 4 visited Southampton Art Gallery and Year 3 went to Churt Sculpture park. Music featured high up on the arts week programme and the Infants spent a fun filled afternoon in their own workshop created by music teacher Hamish Newport and Year 6 produced a xylophone for the nursery walkway out of painted guttering pipes.



Every year all the children work together to form a piece of art work that is linked to the theme and is a collaborative whole school project. This year they worked on a project to recreate the poem outside along the nursery walkway using recycled materials. Resources had been collected since the beginning of term by parents, staff and children and sorted into colour groups by the children. The infants produced a pea green boat mosaic featuring the owl and the pussy cat on the start of the journey using a collection of bottle tops and helped by the Head of the Nursery - Annabel Knowles. This linked into a woven picture featuring the land where the bong tree grows created from strips of plastic bags woven into the fence with flowers and a bong tree manufactured from recycled bottles. Art teacher, Catherine Foley worked with Year 3 pupils to produce an amazing three dimensional turkey, cat and owl from chicken wire with plastic bag feathers and fur that was added to the walkway.

The week culminated with a Victorian themed dress up day and a special Owl and Pussy cat lunch.



# LIPHOOK TRAVEL

*Worldchoice*

11 Headley Road

Liphook  
Hampshire  
GU30 7NS



*Independent Family Business  
Established over 40 years  
Contact us for all your travel needs*

## Travel Professionals

A competitive price - with excellent advice

Tel: 01428 723525

email: [info@liphooktravel.co.uk](mailto:info@liphooktravel.co.uk)

[www.liphooktravel.co.uk](http://www.liphooktravel.co.uk)



# CR11BBB

3A High Street  
Headley  
Bordon  
Hampshire GU35 8PP

For Airport  
Connections and  
Business Travel

Contact: Paul Cribb  
Bookings: 01428 717 896  
Enquiries: 07777 673 953  
Email: [cr11bbb@btinternet.com](mailto:cr11bbb@btinternet.com)

**THIS IS THE WAY FORWARD**

## THE ACORN CLUB

QUALITY DENTAL CARE FOR CHILDREN

Check-ups and hygienist appointments for all children from birth to 12 years are completely free of charge and our 12-18 year old members pay just a very small monthly charge. All children get:

- 3x check-ups per year
- 1x hygienist appointment per year
- 50% off all treatment
- Worldwide dental emergency insurance

Call 01428 723179 for further information

*Terms and conditions apply*

**OAK LODGE**  
DENTAL PRACTICE

3 Headley Road, Liphook, Hampshire GU30 7NS  
T 01428 723179 E [smile@oaklodgedental.co.uk](mailto:smile@oaklodgedental.co.uk)  
[www.oaklodgedental.co.uk](http://www.oaklodgedental.co.uk)

## B&G BURLEY & GEACH

SOLICITORS AND FAMILY MEDIATORS

Index House | Midhurst Road | Liphook | GU30 7TN

Our friendly and approachable solicitors can help you with:-

- Residential Property • Wills • Probate
- Trusts • Powers of Attorney
- Divorce & Separation • Children & Finance
- Family Mediation • Crime & Road Traffic
- Disputes & Disagreements

We can provide help on a wide range of legal services.  
Please see our website for full details:  
[www.burley-geach.co.uk](http://www.burley-geach.co.uk)

Alternatively please call for more information or to  
arrange an appointment:  
01428 722334

**We stand by  
our reputation**

Offices also in Grayshott (01428 605355) Haslemere (01428 656011)  
& Petersfield (01730 262401)

## County Decorators

*Based in Liphook*



Interior/exterior painter & decorator with  
over 35 years experience providing  
decorating to high standards



**For a free estimate contact Keith Keen:**

01428 724536 - [countydec@gmail.com](mailto:countydec@gmail.com) - 07817804352



Promotional offer when mentioning this advert:

**22% off all confirmed work**





# Crankers Annual Bike Ride



*Remember this lot - The Management Team? They will be after you again next year for the annual Charity Bike ride.*



*Registration Team.*



*First Lady Back.*



*Hampshire Rescue for the bikers if needed.*



*The Dinosaur team.*



*Dick & his 1958 bike.*



*Kevin Hughes ex RN and Hand cycle.*



# Complete Building Service

- ◆ Extensions
- ◆ Renovations
- ◆ Alterations
- ◆ Kitchen and Bathroom fitting
- ◆ Qualified plumber
- ◆ Painting and Decorating
- ◆ Wall paper hanging

*Experienced and Reliable Service,  
References available*

## C.J. Sheppard

Tel: 01420 478383

Mobile: 07968 452126

*Fernhill, 79 Liphook Road,  
Lindford, Hants GU35 0PG*



## CHIROPODY

AT

“MARIONS”

THE SQUARE, LIPHOOK

CALL:

FIONA WEBBER

**01730 710461**

FOR APPOINTMENTS



The Community Connection

### Winter Course Programme

Do you need help with your 'Smart Phone'?

**eBay** Convert your clutter to cash!

**iPad / tablet** so many functions, how many do you use?

**Weave a Christmas Tree** New textile session in December

Free Refreshments with each course session

Hands on Tuition in small groups



### Fernhurst Centre Café

Fabulous 'bean to cup' coffee and fresh locally made cake

Come in and see us - we think you will be impressed

**Free parking close by**

visit our website: [www.fernhurstcentre.org.uk](http://www.fernhurstcentre.org.uk)  
email: [ferncent@gmail.com](mailto:ferncent@gmail.com) - tel: 01428 641931

## A&D SWIMMING POOLS LTD



- New Builds
- Renovations
- Landscapes
- Maintenance



T: 01428 724345  
M: 07738 935272

[www.adpools.co.uk](http://www.adpools.co.uk)





# The Fernhurst Centre

**The Fernhurst Centre has Christmas sorted AND can help you put your New Year's Resolutions into Practice!**

The Fernhurst Centre, the internet hub and coffee shop in the heart of Fernhurst Village has had a complete refurbishment and modernisation and is open for business in time for the Christmas rush.



Particularly popular at this time of year are the Centre's individually commissioned Christmas cards featuring colourful paintings of local scenes and the Fernhurst 2017 Calendar with amazing photographic 'Peeps from the past in the village'.

Experience shows that the

Christmas cards, as well as the Centre's own greetings cards and notelets, are perfect for sending to friends and family far away, as the local aspect gives the seasonal greetings such a special touch. Also on sale are an array of brightly coloured jute shopping bags which are ideal presents all year round, and in December the red bags double up nicely as Santa sacks and gift wrapping.



Another seasonal offering is the Fernhurst and Liphook Scout Christmas Post, whereby the Fernhurst Scouts, teaming up with their counterpart Scout Group in Liphook, offer to hand deliver any Christmas card within Fernhurst or

Liphook for just 25p. This explains the bright red Scout Posting boxes that can be spotted from early December in several locations in Liphook and Fernhurst. Last year over 2000 cards were delivered this way and the Scouts are standing by for an even bigger haul this year.

The Fernhurst Centre is offering something new to fight the Post Christmas Blues and help fulfil many people's New Year's Resolutions. How many of us think we really should learn how to use all those functions on our smart phone or secretly envy others as they effortlessly manage their photos on an iPad? The truth is, we probably use about 5% of the available functions of the IT gadgets at our disposal and sometimes panic if our computer or smart phone offers us an update. We keep meaning to find out what else we can use our phones and tablets for but it is hard to know where to start.

If you would like you change all that, the Fernhurst Centre Winter Course Program can help. The Centre runs inexpensive courses in small groups on a wide range of iPad, tablet, desk top computer and smart phone topics. As one recent course attender put it, "I feel so much more confident using my iPad now and am enjoying exploring all the things it can do. Being taught in a small group meant there was time to ask questions and then put the answers into practice straight away."

When the Centre first opened in 2003, relatively few households had their own computer or broadband, now the emphasis has shifted to making the most of new technology and superfast connection speeds. Courses on offer include 'How to get the best

out of your Tablet or iPad', 'Find your way around an iPhone', 'Using your new Windows 10 Software' as well as courses on Selling on ebay, storing on the Cloud, Researching Family History and French conversation." It is such an easy way to learn about these topics and there is ample local parking and free refreshments in the course break.



The recent refurbishment of the Centre has given a larger coffee shop area with comfortable seating, softer lighting and contemporary décor. The modernised kitchen boasts a bean to cup coffee machine, fresh locally made cake and an array of snacks and nibbles, all of which makes the Centre an ideal meeting place for young and old alike. There's a toy box, free computer use for children and free wifi for adults buying refreshments as well as a free book and DVD library and a choice of the Week or local papers to read.



A key factor in the success of this internet café and coffee shop as a social focus of the village is its volunteer team who are involved in every aspect of the Centre's activity. Nearly 30 local residents volunteer at the Centre, manning the counter, ordering refreshments, teaching the courses and maintaining and tidying the premises. There is even a free recycling scheme for unwanted IT equipment and printers, which means the Centre is doing its bit for the environment as well. Inquiries about recycling are welcome, all personal data is removed from computers and destroyed in the recycling process. Anyone wanting to bring items in should contact the Centre in advance using the contact details below.

The Centre, at 2 Crossfield, Vann Road in the heart of Fernhurst, is open 10 - 5pm on weekdays and 10-12 on Saturdays and there is always a friendly welcome for visitors. More information can be found on [www.fernhurstcentre.org.uk](http://www.fernhurstcentre.org.uk) or call 01428 641931

**Antonia Plant**



Churcher's College Nursery  
for children from 2 years 9 months  
opening Jan 2017

**CHURCHER'S COLLEGE**  
**nursery**

**Meet our Liphook  
Nursery Team**

We are welcoming  
young pupils to  
our new nursery  
in Liphook from  
January 2017

For more information call  
**01730 236870**

Churcher's College Nursery, Midhurst Road, Liphook, Hampshire GU30 7HT  
Tel 01730 236870 Email: [nursery@churcherscollege.com](mailto:nursery@churcherscollege.com)  
[www.churcherscollege.com](http://www.churcherscollege.com)

# Genesis

## AUTOMOTIVE

**The Total Motoring Solution**



- Servicing and repairs to all makes of vehicle
- MOT Testing Centre
- Electronic Diagnostics
- Exhaust and battery centre
- Unbeatable prices on all makes of tyres
- Full air-conditioning service available

CALL NOW ON  
**01428 727117**

Unit A1, Beaver Industrial Estate  
Midhurst Road, Liphook GU30 7EU






# The Beatrix Potter Story



Although we cannot claim Beatrix Potter as a Hampshire writer, I'm sure we can all claim her as 'one of ours', thanks to the wonderful books and indelible characters she gave us that have delighted generation after generation. Your American-born reporter, Mari Wallace, experienced the joy of reading them to my children who loved not only the imaginative stories but also the charming illustrations. I also loved

the film, *Miss Potter*, starring Texas-born Renee Zellweger as the eponymous heroine. Her English accent was most convincing. I have to admit that mine, despite living in Britain for 42 years, is virtually non-existent!

Beatrix Potter was born in Kensington 150 years ago, on 28th July, 1866. She never enjoyed living in London. Her heart was always in the countryside, and it was during family holidays in Scotland and latterly but most importantly, in the Lake District, that she really came alive.

As a young child she took an avid interest in natural history. She and her brother were allowed to keep a virtual menagerie in their home – these included, at various times, rabbits (of course!), a green frog, lizards, newts, bats, snails, guinea pigs, a canary, a budgie, duck, tortoise and hedgehog. She was able to observe them closely, drawing them incessantly. The famous 19th century artist Millais, who was a friend of Beatrix's father, saw her artwork and said, 'Plenty of people can draw... but you have observation.'

In 1893, when she was 27, she created a 'picture letter' which she sent to the son of a former governess. It was of a disobedient young rabbit called Peter. She then sent another picture letter to the lad's younger brother about a frog called Jeremy Fisher. At around the same time, Beatrix was also working on serious artwork, specifically of fungi, and wrote a scientific paper on the subject. But it was her picture letters that proved to be pivotal. At the suggestion of the boys' mother, Beatrix tried to get a publisher for these stories but was rejected by them all on the grounds that the illustrations were in black and white. Enterprising lady that she was, Beatrix had 'The Tale of Peter Rabbit' printed privately (twice) at her own expense. Today, we know that self-publishing is a regular occurrence, but Beatrix did it more than 100 years ago! She showed her book again to publishers Frederick Warne & Co. and created colour illustrations for them. They published it in 1902. It was an immediate success. Beatrix then published, herself, a version of 'The Tailor of Gloucester' (with colour illustrations throughout) before that, too, was published by Warne, together with 'The Tale of Squirrel Nutkin'. Twenty more books followed. A real entrepreneur and a woman ahead of her time, Beatrix also registered a Peter Rabbit doll in 1903, qualifying him as the oldest licensed literary character. She recognised that 'spin off' merchandise, ranging from tea sets to bedroom slippers to board games, would be marketing assets. When my children were christened, they received gifts of mugs, plates, bowls, even money boxes with Beatrix Potter characters on them, as well as, of course, the books. I'm sure many of you can say the same. All such products have to adhere to the same sort of strict criteria set down by Beatrix Potter decades ago, and

are carefully controlled and licensed..

Beatrix Potter became unofficially engaged to Norman Warne of the publishing house that produced her books. Unofficially, because her parents did not approve of her marrying into 'trade'. Tragically, he died of leukaemia before they could marry. It was during this very sad time that she took particular solace in the countryside of the Lake District. She bought Hill Top Farm, near Sawrey, which was her inspiration for so many books to follow. She became heavily involved in the farming community, and even became an expert on the breeding of Herdwick sheep.

In 1909 she purchased Castle Farm. That became her residence but she continued to use Hill Top as her writing retreat. Thanks to the income from her books, she was able to buy more land in the Lake District with a view to protect it from development. She was encouraged in this endeavour by solicitor William Heelis whom she married in 1913, when she was 47. The couple were enthusiastic supporters of land conservation and early benefactors of the National Trust. When Beatrix Potter Heelis died in 1943, she left 15 farms and more than 4,000 acres of land to the Trust. As a tribute to her generosity and commitment to the philosophy of the Trust, they have called their headquarters in Swindon 'Heelis'.

Beatrix Potter's books are sold around the world – more than two million a year, four every minute.

If you venture up to the Lake District, do go and visit the sites associated with her. Hill Top Cottage is kept just as it was when Beatrix was there – wholly authentic, complete with furnishings that belonged to her. You almost expect her to appear at the door at any moment!

For further information, contact The Beatrix Potter Society ([www.beatrixpottersociety.org.uk](http://www.beatrixpottersociety.org.uk)) – whose patron is actress Patricia Routledge – which exists to promote the study and appreciation of her life and work – as an author/illustrator, landscape and natural history artist, diarist, farmer and conservationist.

*Mari Wallace*





# Womens' Institute

The words 'Women's Institute' seems to conjure up a number of different images for different groups of people in our society.

For some its 'Jam and Jerusalem' and for others it's a force for change. With active national campaigns supporting a number of initiatives to improve the fabric of local life. These initiatives include supporting British milk production and highlighting the food miles involved in supplying our daily shopping lists and the reduction of supermarket packaging. Campaigning against practices that are detrimental to our native bee population and campaigning for health related issues, relating to mental health care and the midwifery services nationally.

But for others, it's a way of meeting new people and integrating into a local community.

The monthly meetings bring together socially, women in the local area. Group activities, linking other local the institutes, and

theWI  
INSPIRING WOMEN

1915 FOR 100 YEARS 2015

county federation events link with those across the country, everywhere from rural villages to towns and cities.

The WI offers its members the opportunity to be entertained and educated with interesting talks at the monthly meetings, offers access to a dedicated college teaching everything from craft and cooking to history music and fitness. Finding ways to create, make,

recycle, upcycle and reuse and keep alive skills that are embedded in history.

So ladies of Liphook, if you fancy doing something different in 2017 consider joining the WI. **We meet on the 3rd Wednesday of the month at 7:30pm in the Liphook Village hall. For further information on Liphook WI programme of events, call Maureen Truss on 01428 723836.**

*Sue Gaffyne  
Press Officer Liphook Branch*

## Rubbish - Litter - Waste

I know such a boring subject – At the time of starting to write the article I had just returned from a month spent in Australia. It was then the early March and the backward spring in the UK had given little encouragement for vegetation to wake from its winter sleep, and in consequence had provided small cover for the rubbish we humans disperse along the sides of our roads. The contrast to our roads and the cleanliness of the Australian highways, and byways was then by comparison startling.

In July, with verges in and around Liphook in full flower and looking glorious and remembering with delight the swathes of oxeye daises on the islands and central reservations in June; my observations seemed altogether inappropriate. However in March, I did wonder why there was such a dramatic contrast. I was, aware that each year though out Australia a 'Clean up Australia Day' is held in which communities, schools and organisations are all involved. I had been there before and helped with this, but not really thought too much about the founding of the day and or, the history and the culture which has arisen since it was first founded.

My daughter, a resident of many years, was only too happy to enlighten me on the pride that her friends and neighbours hold in looking after their environment, not just on the one designated day but throughout the year. Some even going to the extent of following litterbugs home to return litter dropped. This brought back a memory of an Australian family who I met in Kenya in 2010. It was only their second day in the country and to entertain the children it was decided to take them to the elephant sanctuary on the outskirts of Nairobi. When driving along the Ngong road, the elder of the children turned to me – with a look of complete disgust asking "who are; these dirty people, who drop rubbish in their streets?" Nairobi at that time was not the cleanest of environments and blue plastic bags were evident almost everywhere. I cannot remember my answer, but do remember being embarrassed on behalf of our then driver. Clean up Australia have for many years fostered relationships with Schools encouraging them to build care for the environment into their curriculum and via the 'Clean Up' web site providing free lesson plans on the many aspects of waste. Youth Clubs, Guides, Scouts and University Students are also encouraged to join a 'Youth Cleanup Day' not

too clean up youths you understand; but again to clean parks, beaches and waterways! Working relationships with businesses and councils have also been established.

'Clean up Australia Limited' is a not for profit organisation and was (I have read) founded by Ian Kiernan and co founded by Kim McKay in 1989 with the first clean up day held in January 1990 and as you can see it has grown into a national institution and one which so many of its citizens embrace.

Here in the UK in 1954 the National Federation of the Women's Institute launched an initiative 'To Keep Britain Tidy'. This was well before the advent of cans and plastic bags, then, a fine of £5.00 was imposed for dropping litter. Presently councils may impose fines between: £50 - £80. KBT is an environmental charity; it works in a similar manner to 'Clean up Australia', engaging with government, schools and business, Costa and Lidle being two. In March of this year in collaboration with Country Life 'Clean for The Queen' was launched. This had a mixed reception from us British. Thankfully many volunteers turned out locally, and their work made an immense difference to the Lanes in our area.

KBT's web site claims, that during the campaign 300,000 bags of rubbish was collected country wide!

A further Clean, up Britain campaign was launched in 2015, (cleanupbritain.org) with Jeremy Paxman lending his name and support to the organisation. Its web site encourages people to sign the peoples pledge and to start or join a clean-up group.

And in Liphook, Liphook in Bloom have once a year and for many years cleaned our village streets, of cans, bottles, sweet wrappings, even cellophane off cigarette packages, which perhaps because it is made of a clear material is considered invisible by those who discard it!

Despite all the efforts of councils and organisations, litter and waste of every kind is still and will continue to be an immense and costly problem. However we could all help a little in Keeping Britain Tidy by simply taking our litter home with us.

*Patricia Worrall*

# NHS and Emigrants

Turn on your television news most days and there are items about how the NHS is in trouble, or how the emigrants are coming to our country and taking up positions in work places that should be preserved for British people.

I had the misfortune to test these theories at first hand when I had a fall at home recently.

My wife summoned an ambulance which came within ten minutes. The paramedic and driver were extremely efficient and I was whisked to the Royal Surrey Hospital in seemingly no time where the A&E staff were anticipating my arrival.

My only problem was the bottleneck in A&E. As it was considered that my injury was non-life threatening I was put aside to wait my turn for an X-Ray and given morphine for the awful pain. It was six hours before I was eventually taken to the X-Ray department, where it was revealed I had a severe fracture of the hip and was then taken to a ward to sleep. A surgeon came to see me early next morning and explained the operation procedure that would be done that day.

After five days I left the Royal Surrey thankful for the skill and kindness of the staff and was transferred to a rehabilitation hospital in Surrey.

In the course of my work over forty years I had travelled around

the world and lived in several places and was able to understand and communicate with the people of many countries.

Apart from the physiotherapists and senior nurses I estimated that the community hospital was staffed by 80% of people from foreign countries all of whom spoke good English in different accents that I recognised.

The Nigerian girls with their smiles used to brighten my day with their laughter resounding down the corridor. The night shift consisting of Indian and African nurses who were so polite it was almost embarrassing how they looked after me so well. One little lady from Ghana who said she came to England forty years ago, always had a cheerful word for me at six in the morning.

There were mixtures of religions also. I noticed on one day three nurses on duty, one was a Rastafarian from Nigeria, the second an English nurse wearing a cross around her neck and another a Muslim girl whose father was a doctor in Holland. They all integrated very well. Where would the NHS be without these amiable, really hard working people?

Because of the excellent physiotherapy my wife was able to take me home by car after five weeks. I will be ever grateful to the NHS and their staff.

*Malcolm Nolan - USA Creative Writing Group*

## Roald Dahl

Roald Dahl the well-known children's writer, British novelist, screen writer and fighter pilot would have celebrated his 100th birthday this year. Born on 13th September 1916 in Llandaff Wales of Norwegian parents who named him after the polar explorer Roald Amundsen.

At the age of nine, Roald went to boarding school at St. Peter's in Weston-Super-Mare followed by Repton School in Derbyshire, which had a reputation for academic excellence. He was not interested in academia and just wanted a job where he could see places like Africa and China. He corresponded with his Mother and sisters regularly and together with his school reports they became the basis for his story, 'Boy: Tales of Childhood'.

Just before the second world war he was employed by Shell in Dar-es-Salaam, but when war broke out he joined The Royal Air Force. Following a plane crash in Alexandria where he suffered serious spine and hip injuries he was transferred to Washington as assistant Air Attaché. Whilst there he met C.S. Forester who encouraged him in his writing. His first piece of remunerated writing was entitled 'Shot Down Over Libya'.

Roald's first children's story was 'The Gremlins', taken from RAF folklore where it was rumoured that 'the little creatures were responsible for mechanical failures in planes'. Walt Disney read 'The Gremlins' and after the inevitable talks, work started to make his stories into films.

In 1948 Roald wrote his first adult novel entitled 'Some Time Never: A fable for Superman'.

Roald met his first wife Pat Neal at a dinner party and in 1953, they were married in New York. A year later they purchased Little Whitefield Cottage in Great Missenden, renaming it Gipsy House.

'Charlie and the Chocolate Factory' was published in the US in 1964. Roald was fascinated with chocolate and was known to have told children not to bother with the Kings and Queens of England, learn the history of chocolate and memorise the dates bars were invented.

It was a long time before Dahl found an English publisher. The film 'Willy Wonka and the Chocolate Factory' was released in 1971. He wanted Spike Milligan or Peter Sellers to play the part of Wonka but it was not to be.

'Fantastic Mr Fox' was partly inspired by the tree growing outside his house, which he called the witches tree. He used to tell his children stories of the fox family living beneath it.

Roald Dahl died in 1990 after contracting a rare blood disease and is buried with his snooker cues, good brandy, chocolates, HB pencils and a power saw in St Peter and St Pauls' Church graveyard in Great Missenden. To find his grave follow The BFG's footprints.

The Roald Dahl Museum and Story Centre set up by his second wife Felicity d'Abreu Crossland opened in 2005. The Solo Gallery has on display the interior of Roald's writing hut, completely as he left it right down to the waste paper bin.

If you decide to go to Gt. Missenden be sure to leave time to visit RHS Waterperry Gardens.





# Alan Greenwood & Sons

Independent Family Funeral Directors

[www.alangreenwoodfunerals.com](http://www.alangreenwoodfunerals.com)



## Top Quality Funerals at a Fair Price

*The Greenwood Family are directly involved in the running of the Company, ensuring that your wishes are carried out with the utmost dignity and precise attention to detail.*

Latest Jaguar and Mercedes Hearses and Limousines  
Home Visit Arrangements  
Private Chapel of Rest  
Pre-paid Funeral Plans  
Very Competitive Charges



19 Junction Place, Shottermill, Haslemere, GU27 1LE

[haslemere@alangreenwoodfunerals.com](mailto:haslemere@alangreenwoodfunerals.com)

**01428 656364**

## Are you a Carer?

Why not come along to a

**'Carers Get-together'**



and gain support from talking to others like you...

Every **1st Wednesday morning** at the

Millennium Hall

Between 10am and 12noon

All Carers welcome

If you would like further information please contact:

**Bramshott & Liphook**

**Voluntary Care Group**

**Tel: 01428 723972**

**COUCHMAN  
HANSON  
SOLICITORS**

We are experienced local solicitors offering straightforward, practical advice.

We cover a wide geographic area and offer out of hours appointments and home visits at no extra cost.

Employment – Employer and Employee | Wills | Lasting Powers of Attorney | Trusts | Probate | Civil Litigation | Advocacy | Company & Commercial | Debt Recovery

**Tel: 01428 722189**

Web: [www.couchmanhanson.co.uk](http://www.couchmanhanson.co.uk)  
Email: [enquiries@couchmanhanson.co.uk](mailto:enquiries@couchmanhanson.co.uk)  
Chittlee Manor, Haslemere Road,  
Liphook GU30 7AZ



*Zannah M. Charman*  
Fitness Instructor

Mixed Ability  
Pilates Class  
Monday Morning -  
Liphook  
9.15am-10.15am

Mixed Ability Pilates Class  
Wednesday Evening - Milland  
6.15pm – 7.15pm

Hatha Yoga Class  
Tuesday Morning – Liphook  
9.15am – 10.45am

**\* BEGINNERS WELCOME \***  
Contact Zannah

on  
**07710 328844**

or Email:

[zannah.charman@hotmail.co.uk](mailto:zannah.charman@hotmail.co.uk)



# Poets Corner

## Wintry Weather Over Arundel Wetlands

The sky's a clear bowl of light in early day,  
Wind sweeps drenching clouds away  
Earth sodden, mired, puddled,  
Sun gleams on surface water  
Creates shimmering steel.  
Clouds rise from horizon's rim  
And spread outwards,  
Puffs of smoke trail  
Into milky patterns,  
Grey masses, dense and darkening, follow.

Through reed-beds  
Spasms of rain spit.  
Clouds blacken, water spouts from sky,  
Wind whips through reeds  
Subdues and crushes,  
Colours dim.  
Water sweeps through wild woods  
Sighing and swirling.  
Long live the weeds  
And the wilderness yet.

A skein of lemon light  
Unravels in the western sky.  
The storm clouds swiftly flee  
Driven by blustering air.  
Iridescent lights edge  
Misty clouds with rainbow colours.

Clear skies emerge.  
Low winter sun  
Dances dizzily across water's surface.  
Colours emerge electrifying,  
Orange of willow,  
Blood red of dogwood branch.

Then through the clear air  
A startling swiftness of flight,  
Arrow straight,  
Electric blue-back,  
Bronze-burning breast,  
As kingfishers catch fire.

Light dims, sun sets  
The darkness spreads  
Until stars prick the blackness  
Earth's wrapped, subdued, dimmed.  
The heavens are alive.  
Look, look up at the stars  
Look at all the firefolk  
Sitting in the air.

**Ruth Howes**

*with thanks to Gerard Manley Hopkins*

## Fish Pie

On Monday we had a fish Pie for our tea,  
There was too much to eat for herself and for me,  
The pie dish was hot so couldn't go in the fridge  
So in to the microwave oven it was popped for a smidge.

It was clearly forgotten and as the week it went on  
There was an interesting smell as though  
something was wrong,  
On Thursday I needed my coffee to warm  
and opened the microwave as was the norm.

Out wafted the gas built up through the week  
Fish pie was now off and it's future looked bleak,  
Thrown out on the lawn for the birds to eat  
The interesting smell was transferred to the street.

Soon after the postie arrived with our post  
He arrived with an expression like he'd seen a ghost,  
He said there's a gas leak from somewhere round here  
But I knew what the smell was, it was perfectly clear.

**Frederick Werner**

## Run, Run, My Love

Run, run, my love, through open door,  
Down stone strewn path, in dappled shade,  
Your skirts asweeping forest floor,  
Your hair afire, in open glade.

Run, run, my love, let gentle breeze  
Caress and tousele as you pass,  
The burnished bracken, whisper, tease,  
And intertwine with russet grass.

Run, run, my love, the time is yours,  
Your hopes, your fears, your wildest dreams,  
As high atop Queen's Bank you pause,  
And gaze the Deer's Hut, ancient beams.

Run, run my love, what ere awaits,  
Let not the silken sand slip by.  
And if through storm, when that abates,  
Say not, you wish, "If only I..."

Run, run my love, your life is here,  
Who knows the peaks and troughs ahead,  
Seize now the day, the month, the year,  
Be soft the pillow, on your bed.

**Angela Glass**





# Hansons

## HAIR STUDIO

30 Station Road, Liphook

### Opening Times:

Monday: Closed

Tuesday: 9.30am Till Late

Wednesday, Thursday and Friday: 9.30am to 5.00pm

Saturday: 9.00am to 2.00pm Sunday: Closed

*Appointments outside normal hours available by request*

30 Station Road, Liphook, Hants GU30 7DR

- **Collect Hansons Privilege Points with our Loyalty Scheme**

- **Look Out For Our Monthly Offers**



## Telephone: 01428 723636

# AdamsGale Ltd

<p>system health checks bathrooms wet rooms underfloor heating tiling</p>	<p>unvented cylinders landlord certification gas / oil / lpg systems radiator balancing solar installation</p>	<p>boiler servicing boiler replacements electric boilers power flushing kitchen refurbishments</p>
---	--	--

**Free quotes with no obligations**

## 01428 727895 or 01420 83308

www.adamsgale.co.uk | info@adamsgale.co.uk

## VILLAGE PUB SAVED FROM CLOSURE

# First Birthday Celebration

Saved from being yet another ailing British pub statistic that calls time on its customers, one year on, The Royal Exchange in Lindford is celebrating its first year in business, having firmly rooted itself as a pub the village, and surrounding areas, all can love, frequent again and be very proud of.

Since reopening last November, following an £850,000 refurbishment, The Royal Exchange, has received a big thumbs up from locals who first approached Red Mist Leisure in 2011, as a reputable local pub group, by a member of the 'Pub Task Force'. The Task Force had formed to try and save the Royal Exchange which had been put up for sale and was in a very ramshackle state, having suffered years of neglect and lack of investment.

Highlights over the year have included:

- Being made to feel so welcome within the village and surrounding areas and receiving such positive feedback for the food, service and atmosphere which the team work hard to deliver on a daily basis.
- Committing to raising 10k (which it plans to exceed) over three years for the Hampshire and Isle of Wight Air Ambulance, a nominated charity by its customers.
- Launching the Bordon Business Exchange, connecting local businesses with a monthly, free networking event with guest speakers and held in partnership with Bordon and Whitehill Regeneration and Enterprise Nation.
- Raising nearly £2,500 for charity since opening with a 26 miles 'Red Mist Ramble', Red Mist Ale donations, networking events and prize donations of over £500 to local schools and fundraising events in the area.
- Teaming up with Grayshott Cricket Club to sponsor the pavilion at Broxhead Common, around the corner from the pub. Supporting the clubhouse and the team and also providing sponsorship as part of the popular Wine and Beer festival held at the Grayshott Cricket club in the summer.
- Hosting the bar at the successful annual Lindford Village Fete.
- Continued liaison with Linford Parish council - discussing Christmas events, advising on a new planting scheme to replicate the pub's design at the entrance to the village
- Becoming members of Hampshire Fare to further champion the great produce which the county offers. New producers and suppliers include The Great British Butcher, Alf Turner, Meadow Cottage Ice Cream based in Bordon, serving Mozzo Coffee using selected beans roasted in Hampshire, Rapeseed Oil from The Cold Pressed Oil Company based in Crondall, Twisted Nose Gin from the watercress beds in Arlseford and popular cask ales from the Hop Art Brewery in Blacknest and Triple FFF in Alton.

Renowned for its fresh, seasonal and local British food, and offering an authentic pub setting serving a wide array of local ales, craft beers, local and specially selected wines and a great selection of local artisan Gins.

The kitchen team, have focused on creating a seasonal pub menu featuring such greats as Best of British sharing board -



Homemade Scotch egg, Woodall's Blackcombe ham, chicken liver parfait, Alf Turner's Hampshire rare roast beef, pork and leek sausage with horseradish cream, red onion marmalade, Royal Exchange salmon gravlax donker rye bread, caper dressing, Roasted butternut squash, red pepper and rocket grilled goat's cheese on ciabatta crostini, toasted pine kernels, honey and mustard dressing, Hampshire 30-day dry aged sirloin steaks and a range of daily specials featuring such dishes as West Country mussels with leeks, white wine and garlic and Sussex belly of pork with apricot stuffing and apple jus. For those with a sweet tooth, the handmade plum and almond tart with Meadow Cottage Farm honeycomb ice cream or Cherry and lemon baked cheesecake strawberry sauce and mixed berry compote.

Provenance and sustainability of food is increasingly important to customers, so the Royal Exchange have taken steps to ensure suppliers come from Hampshire and the South East of England wherever possible and to support small British producers.

The heart of the pub has a large bar area which has a cosy log burner and is perfect for a leisurely drink with friends and family whether it be real ale, great coffee, a glass of specially selected wine or a local gin.

Dog friendly and with full wheelchair access, The Royal Exchange's interior also boasts exposed beams and a high roof barn to add to the welcoming atmosphere where a countryside chic and contemporary feel (in terms of decor and banquet seating) fuse effortlessly.

The patio area has proved popular this summer with bi-fold doors along the length of the building opening onto the terrace to give that inside out feel, as well as in the winter months, when customers could help themselves to a cosy blanket, sit under the heaters and enjoy a mulled wine or cider.

Comments Royal Exchange Pub Manager, Donna Richards, ***"We're delighted by the response we have had to the pub over the last year and the support we have had from locals. I am so proud of what we have all achieved together and look forward to the years ahead"***.



# Liphook and Canada

I'm sure we all remember watching the news footage on television of the devastating fires that raged in parts of Canada this past spring. Spread over more than 1,500,000 acres in northern Alberta and into Saskatchewan, it is said to be the costliest disaster in Canada's history.

Liphook resident and District Councillor, Bill Mouland, approached the East Hants District Council, hoping they would be able to contribute to the Canadian Red Cross's Appeal, given our historic links with Canada, going

back more than 100 years. The Council said it could not fund appeals outside the parish so Bill Mouland, undaunted, then contacted many of the local organisations that the Council had helped with grants in the past. Many of these responded, as did individuals. The Bramshott and Liphook Parish Council gave £250 from the 'Chairman's Allowance' on the grounds that it was 'fostering relations with an important community overseas'. This encouraged Bill to put forth a motion to the EDHC asking for £1,000, seconded by

our other District Councillor, Angela Glass - which was unanimously approved. In his speech, Bill told councillors about the Canadians who were billeted here during the First World War and about the lines of graves in St. Mary's Church yard. He said that Bramshott and Liphook had never forgotten the Canadians and commemorated the link every year with a moving ceremony led by children from the Junior School. Council officers said that they had found a way in which money could be given.

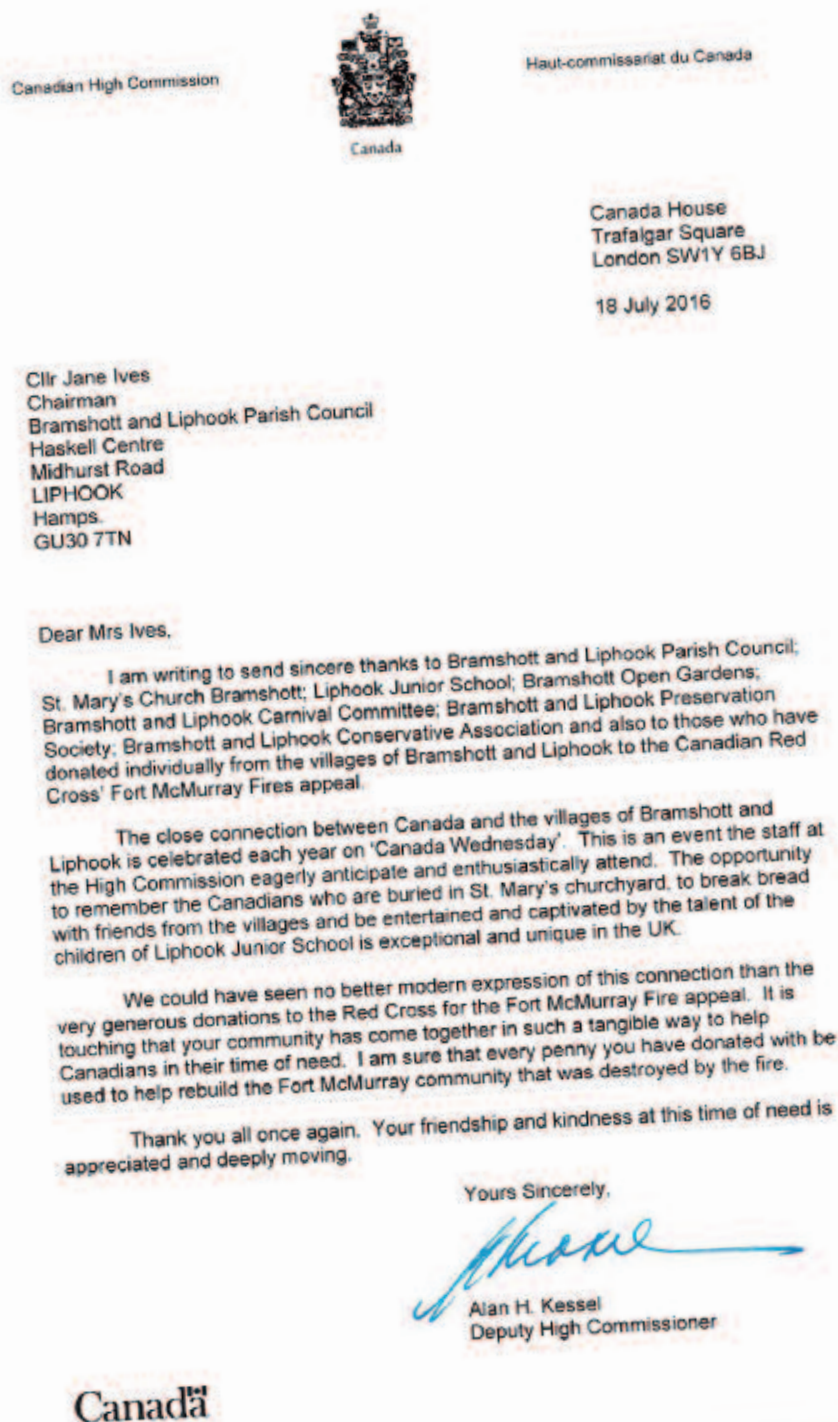
The motion read: 'This council acknowledges the historic ties between the parish of Bramshott and Liphook and Canada over more than 100 years and resolves to give £1,000 to the Canadian Red Cross to support its efforts to help the people of Albert and Fort McMurray following the devastation caused by the fires in May when 2,400 homes were destroyed.'

The result is that our community gave more than £2,000 to the Canadian Red Cross Appeal, a sum which the Canadian government then promised to match.

The letter reproduced here is the one sent from the Deputy High Commissioner of the Canadian Embassy to Jane Ives, chairman of our Parish Council.

We can be justifiably proud of Bill's efforts and the money raised in our parish of only about 8,700 residents.

*Mari Wallace*



## CLUBS AND ORGANISATIONS IN AND AROUND LIPHOOK

- AC MEON (Sunday Football Club)** - Russell Kirk, 725303.
- AGE CONCERN LIPHOOK** - Robin Young, 723255.
- ALCOHOLICS ANONYMOUS** - 0845 769 7555.
- ALZHEIMERS SOCIETY** - Dementia Helpline: 0845 300 0336.
- ARTHRITIS RESEARCH CAMPAIGN** - Susan Sinnatt, 751687.
- ATHLETIC CLUB** - Haslemere Borders - Secretary: Dave Bateman, 658739.
- BABY LIFE SUPPORT SYSTEMS (BLISS)** - Dianne Bennett, 642320.
- BADMINTON CLUB** - Vanessa Stopher, 01428 741231.
- BEEKEEPERS ASSOCIATION** - Petersfield and District - Jenny Peters, 01730 821920.
- BELL RINGERS** - Bramshott - Kathy Ark, 714781.
- BORDON BOULE CLUB** - Mr R. Bulman, 01420 489454.
- BORDON'S TAP DANCING GROUP FOR ADULTS** - Wednesdays (except first in the month) at 8pm. Beryl Greenslade, 604479.
- BOWLING CLUB** - Liphook - Bruce Penny, 01428 722013.
- BRAMSHOTT EDUCATIONAL TRUST** - Email: clerk.bramshott.trust@hotmail.co.uk
- BRAMSHOTT & LIPHOOK ARTS & CRAFTS SOCIETY (First Tuesday of the month 7.30pm)** - Alison Bundy, 01420 488695. Email: Yobund@yahoo.com
- BRAMSHOTT W.I.** - 2nd Monday of the month. 2pm Church Centre. Jean Cordy-President, 01420 474346. Christine Weller, 01428 712593.
- BRIDGE CLUB** - Liphook, Friday Evenings - Mrs M. Paterson, 723177.
- BRITISH RED CROSS** - Mrs C. Saunders, Chase Community Hospital, Conde Way, Bordon. 488801.
- CANCER RESEARCH U.K.** - Shop - 20 Station Road, 724664.
- CARE OF THE BLIND** - Hampshire Association, 023806 641244.
- CARNIVAL COMMITTEE** - Chairman, Karen Feeney, 723971.
- CHILTLEY BRIDGE CLUB** - Mr R. Jones, 651622.
- CITIZENS ADVICE BUREAU** - Liphook Millennium Centre, 20 Ontario Way, Liphook, 0844 411 1306.
- CONFORD VILLAGE HALL TRUST** - Mrs R. Parry, 751364 and Mrs G. Woodward, 751474.
- CONSERVATIVE ASSOCIATION** - Liphook Branch of N. East Hampshire Angela Glass, 722375.
- COUNTRYSIDE COMPANIONS WALKING GROUP** - Mrs Harsha Patel, 724747.
- CRUSE** - bereavement care. Confidential counselling and information. Tel. (01420) 561456.
- DAY CENTRE** - Midhurst Road, (Car Park), Liphook 724941.
- DIABETES UK** - (Petersfield & District) - Mike Ling, Liphook, 724267.
- DREAMS COME TRUE** - Tony Cook, Liphook, 726330.
- DYSTONIA SOCIETY** - Jennifer Wiseman, Liphook 722516.
- FLORAL DECORATION SOCIETY** - Liphook - Wendy Evans (Sec), 722212.
- FOOTBALL CLUB (Liphook United)** - Chairman: Nigel Marr, 727661. Sec. (Youth): Martin Feast, 722677. Sec. (Men's): Helen Atkin, 729939.
- FURNITURE HELPLINE** - Gerald Robinson 01420 489000.
- GRAYSHOTT NADFAS** - Caroline Young, 01428 714276.
- GUIDE DOGS FOR THE BLIND ASSOCIATION** - Mrs Pam Higgins, Cope Cut, Passfield Common, Liphook 751572.
- HAMPSHIRE BADGER GROUP** - Paul Wallace, 642058.
- HASLEMERE SWIMMING CLUB** - Helen Reynolds, admin@haslemereswimmingclub.co.uk
- HASLEMERE DECORATIVE FINE ARTS SOCIETY (NADFAS)** - Jane Larkin, 01428 645054.
- HASLEMERE SUB AQUA CLUB** - Every Thursday at the Herons Leisure Centre at 7.45pm for lecture and 8.45pm for pool training.
- HASLEMERE CAMERA CLUB** - Clinton Blackman LRPS, 01428 727403.
- HASLEMERE HARD OF HEARING SUPPORT GROUP** - Liphook 658190.
- HASLEMERE PERFORMING ARTS** - Angela Canton, Liphook 652360.
- HASLEMERE TOWN BAND (BRASS)** - Chairman, Maurice Wright, 01428 723940.
- HERITAGE CENTRE** - 1st Floor Millennium Centre, 727275. E-mail: liphookheritage@btconnect.com
- HOCKEY CLUB** - Haslemere Ladies (Home ground at Woolmer Hill) - Mrs Pauline McBrown, 01420 477409.
- HOCKEY CLUB** - Petersfield - Andy Owen, 01730 267286.
- HOLLYCOMBE STEAM and WOODLAND GARDENS SOCIETY** - Mr R Hooker, Liphook 724900.
- HORTICULTURAL SOCIETY** - Bramshott and Liphook - Secretary: Ian Haussauer, 41 Chiltley Way. 723045.
- LABOUR PARTY** - Liphook Branch - Dr. John Tough, Horseshoes, Griggs Green. 724492.
- LAMPS** - Dave Rowlandson, 01420 475195.
- LIBERAL DEMOCRATS LIPHOOK** - Mr M. A. Croucher, 723834. Mrs C. Gunn, 722867.
- LiDBA** - (Businessmen,s Association) Sec. Ken Charles, 727438.
- LIPHOOK ACADEMY OF DANCE** - Rebecca Paris, 725267.
- LIPHOOK BOWLS CLUB** - Bruce Penny, 01428 722013.
- LIPHOOK & RIPSLEY CRICKET CLUB** - Nick Clansfield, Lrcyouthcricket@gmail.com
- LIPHOOK CARE** - Charity Shop, 727211.
- LIPHOOK CHURCH CENTRE** - Booking 725390.
- LIPHOOK COMMUNITY LAUNDRY** - Irene Ellis, Chairman, 723823.
- LIPHOOK HISTORICAL WARGAMES GROUP** - Trevor Maroney, 725193.
- LIPHOOK IN BLOOM** - Irene Ellis, 723823.
- LIPHOOK MEDICAL AID FUND** - J.D. Meech, Liphook 727617.
- LIPHOOK & DISTRICT MODEL RAILWAY CLUB** - Nick Harling, Email: idmrc-Secretary@outlook.com
- LIPHOOK MODELLERS CLUB** - Mr. E. Hobbs, 683427.
- LIPHOOK OVER 60's** - Mrs Sue Knight, 723502.
- LIPHOOK PARISH PLAN** - Simon Cooper, 723759.
- LIPHOOK TABLE TENNIS** - Peter Ritchie 727815.
- LIPHOOK TENNIS CLUB** - Katie Land, 722331.
- LIPHOOK UNITED FOOTBALL CLUB** - Chairman - Steve Davis, 07917 131759. Youth Secretary - Neil Pirie, 01428 725754.
- LIPHOOK VILLAGE SURGERY PPG** - 01428 728270.
- LIPHOOK YOUTH CLUB** - Clive Evenden, 722184.
- LIPHOOK WOMEN'S INSTITUTE** - Secretary, Maureen Truss, 723836.
- LISS IN STITCHES** - Deirdre Mitchell, 01730 267214.
- LUDSHOTT PHOTOGRAPHIC** - Diana Grant, 713706.
- M.A.D. COMPANY** - (Methodist Amateur Dramatics) 722813.
- MARTIAL ARTS CLUB** - Sundays - Glen Robertson, 724600.
- MEALS ON WHEELS** - Apetito, 01962 779338.
- MILLENNIUM CENTRE, LIPHOOK** - 723889.
- MOTOR CYCLING CLUB** - Haslemere - Mrs T.C. Reffold, 19 The Links, Whitehill, Hants GU35 9HB.
- MUSICAL SOCIETY** - Haslemere - Choir and Orchestra, Rehearsals Mondays. Sue Ecclestone, 605612.
- MYASTHENIA GRAVIS ASSOCIATION** - (Hampshire Branch) - Secretary, Mrs J. Finney, 776467.
- NATIONAL CHILDBIRTH TRUST** - Samantha Hannay, 606886.
- NATIONAL TRUST** - Ludshott Commons Committee - Susan Salter, 751409.
- OPERA SOUTH** - Caroline Martys, 64476 or 07950 646326.
- OPTIMIST BADMINTON CLUB** - Bohunt - David Lush, 725166.
- PARISH CLUB AND INSTITUTE** - 4 Headley Road, Liphook, 722711.
- PARISH COUNCIL** - Bramshott and Liphook - Mr. P. Stanley, The Haskell Centre, Midhurst Road, Liphook, 722988.
- PEAK CENTRE** - Booking Secretary, Ann Hall, 727751.
- PETERSFIELD AREA WILDLIFE GROUP** - Mr & Mrs Oakley, 01730 2663920.
- PRESERVATION SOCIETY** - Bramshott and Liphook - 722162.
- RAMBLERS** - Liphook & District - Secretary, Caroline Lemka, 713727. Web: www.liphookramblers.wordpress.com
- RAPE AND SEXUAL ABUSE SUPPORT CENTRE** - 01483 546400 or Freephone 0800 0288022.
- RIVER WEY TRUST** - Mr Adrian Bird, 722162.
- ROTARY CLUB** - Haslemere Debbie Morley, 643416.
- ROYAL BRITISH LEGION** - Lt. Col. J.M. Jack, 724002.
- ROYAL NAVAL ASSOCIATION** - Liss & District 01730 895470.
- R.S.P.C.A.** - Mrs Jane Sim-Davis, Liphook 723736.
- SSAFA/FORCES HELP** (Soldiers, Sailors & Airmans Families Association) East Hants Branch, Divisional Sec., Mrs Patricia Lyons, 01420 561264
- SELF SUFFICIENCY GROUP** - East Hants - Dru Furneaux, 01730 814193.
- SENIOR CITIZENS LUNCH CLUB** - Robin Young, 723255.
- STANDFORD, PASSFIELD AND HOLLYWATER COMMUNITY ASSOCIATION** - Mrs Sue Sergeant, Passfield 751326. Hall Bookings, Ron Sergeant, Passfield 751326.
- TAI-CHI** - Diana Forbes, 0777 569 6249.
- THE COMMUNITY SUPPORT LAUNDRY OF LIPHOOK** - Irene Ellis, 723823.
- THREE BORDERS KNITTING CLUB** - Tel 606957, 712055.
- U3A LIPHOOK** - Steve Priestley, 712814.
- VILLAGE HALL** - Bookings: Mrs M. Madgwick, 729080.
- VOLUNTARY CARE GROUP** - Bramshott and Liphook Parish.723972.
- WOMEN'S FELLOWSHIP** - Philippa Holland, 727074.
- WOOLMER FOREST ARCHAEOLOGICAL and HISTORICAL SOCIETY** - 1st Wednesday of month, Colin Brash, 713256.
- WOOLMER FOREST LIONS CLUB** - Ken Bassett, 713285.
- WORKERS EDUCATIONAL ASSOCIATION** - Mrs S. Martin, 641907.



# CHILDREN'S AND YOUNG PERSONS' CLUBS AND ORGANISATIONS

**ARMY CADET FORCE** - No. 6 Platoon, 'A' Company, 1st Battalion  
Hants & I.O.W. ACF - Detachment Commander: Staff Sergeant  
A. Steven, 07796 268095, Parade Night: Tuesday at Wolfe House,  
Bordon, 7-9.30 p.m.

**BALLET & JAZZ DANCE CLASSES** - from 2½ years at Liphook  
Church Centre, Hindhead & Haslemere, Angela Canton, 652360.

**CHILD WELFARE CLINIC** - Church Centre 1.30-3.00pm - Health  
Visiting Team, 01420 488801.

**CHILD MINDER GROUP** - Mon. a.m. at The Village Hall,  
Jeanett Kirby, 729404.

**DANCE & DRAMA CLASSES** - Ballet, Tap, Modern Jazz Dance etc., from  
2½ years at Headley Village Hall, Grayshott Village Hall and Pinewood  
Village Hall, Bordon. Contact Hilary Bishop AISTD on 605290.

**FERNHURST CENTRE IT COURSES & INTERNET CAFE** -  
2, Crossfield, Vann Road, Fernhurst, GU27 3JL. 01428 641931.

**HASLEMERE BAND (BRASS)** - Graham Ingram, 01252 33828.

## INFANT SCHOOL

**PTA** - Lisfa@Liphook-infants.sch.uk

**JUDO CLUB** - Mr M. Poke, Bohunt Centre, 724324.

**LIPHOOK AND RIPSLEY YOUTH MEMBERSHIP** - Steve Saycel,  
0777 178 8486 or Lrcyouthcricket@gmail.com

**LIPHOOK CRUSADERS GROUP** - for 4-14 year olds Friday evenings  
Church Centre. Contact Church Centre Office, 725390.

**LIPHOOK JUNIOR SCHOOL P.T.A.** - foljs@liphook-jun.hants.sch.uk

**LIPHOOK PARENT AND TODDLER GROUP** - Friday am. - Mrs Janet  
Stovold, 722333.

**LIPHOOK THEATRE CLUB** - For 5 - 11 year olds, 722813.

**LIPHOOK UNITED FOOTBALL CLUB** - Chairman, Nigel Marr, 727661,  
Secretary, Martin Feast, 722677.

**LITTLE BADGERS PRE-SCHOOL 2-4+** - Sports Pavilion, Headley.  
714827.

**LITTLE CHERUBS NURSERY** - Mrs M. Powers, Liphook. 723438.

**LITTLE LAMBS** - Tuesday 9.45 - 11.45a.m., Contact Church Centre  
Office, 725390.

**MADHATTER NURSERY BOHUNT SCHOOL** - (01428) 727288.

**MATRIX MAJORETTES** - Mrs Julie East (01420) 487804.

**METHODIST YOUTH** - Mrs Sharon Tikaram, 723801.

**PETERSFIELD YOUNG FARMERS CLUB** - 8-10pm  
Suzy Goring, (01420) 488325.

**RED BALLOON NURSERY** - Hammer, Mrs Susan Lovelock, Magnolia  
House, Churt Road, Hindhead. 607499.

**ROCK CHILDREN'S CHARITY** - Robin Oliver, Liphook. 722734.

**STAGECOACH THEATRE ART** - 4-16 yrs. Drama, Dance & Singing,  
0845 055 6376.

**ST JOHN AMBULANCE & NURSING CADET DIVISION** - Liphook  
Member in charge, John Tough, Liphook. 724492. Millennium Hall  
every Wednesday. Cadets 6.30 - 8.00pm. Adults 8.00 - 10.00pm.

**SWIMMING CLUB** - admin@haslemerswimmingclub.co.uk

**THE ROYAL SCHOOL NURSERY** - Portsmouth Road, Hindhead. 604096.

**TIDDLERS LIPHOOK INFANTS SCHOOL** - Community Room,  
Mondays 9.30-11.00am, 01428 725746.

**TRAINING BAND** - Maurice Wright, 723940.

**WEYHILL MONTESSORI NURSERY SCHOOL** - Scout H.Q. Wey Hill,  
Michele Dows-Miller (01374) 936960 or (01420) 472282.

**WILLOWS NURSERY SCHOOL** - (2 yrs to school age) Jackie Finlayson,  
(Mobile) 07765 675175, (Eve) 722358.

**YOUTH CLUB** - John Tuff, (01428) 724492.

## GUIDES

To join Girlguiding Liphook as a Volunteer or to register your daughter's interest, please complete the online form by visiting [www.girlguiding.org.uk](http://www.girlguiding.org.uk) and clicking the 'Parents' link or 'Get involved'. You will then be contacted by a unit leader.

**Rainbows 5 - 7 Years:** 1st Liphook - Tuesday. 2nd Liphook - Thursday.

**Brownies 7 - 10 Years:** 2nd Liphook - Monday. 4th Liphook - Thursday.  
5th Liphook - Tuesday

**Guides 10 - 14 years:** 1st Liphook - Wednesday. 2nd Liphook - Monday.

**Rangers 14 - 25 years:** 1st Liphook - Thursday.

**Trefoil Guild - Adults only:** 4th Tuesday of each month.

Contact Barbara Ellis via [liphook-guides@outlook.com](mailto:liphook-guides@outlook.com)

**Girlguiding Liphook District Commissioner:** Rachel Topping, to contact use [liphook-guides@outlook.com](mailto:liphook-guides@outlook.com)

## SCOUTS

**1st LIPHOOK SCOUT GROUP** - Scouting offers young people, aged between 6 and 25, a fantastic range of fun, exciting, challenging and adventurous activities and in Liphook we have one of the largest and most active Scout Groups in Hampshire. 1st Liphook Scout Group has nearly 200 members and runs 2 Beaver Colonies (for those aged 6-8), 3 Cub Packs (8-11), 2 Scout Troops (11-14), an Explorer Scout Unit (14-18) and has strong links to our District Network Scout Unit (18-25).

If you live in Liphook or the surrounding villages and you would like your son or daughter to experience the everyday adventure of Scouting, then please contact our Membership Secretary, Clare Smith, at [membership@liphookscouts.org.uk](mailto:membership@liphookscouts.org.uk) to find out more about joining.

If you have any other questions about Scouting or our Group, then please contact:

- Bryan Jackson (Group Scout Leader) on 01428 723248 or by email at [bryan.jackson@btinternet.com](mailto:bryan.jackson@btinternet.com) for all enquiries about Scouting and our sections;

- Kevin Stephenson (Group Chairman) on 01428 724186 or by email at [kevin.stephenson@btopenworld.com](mailto:kevin.stephenson@btopenworld.com) for all volunteer or fundraising enquiries;

- Mark Tellyn (Group Secretary) on 01428 741509 or by email at [info@liphookscouts.org.uk](mailto:info@liphookscouts.org.uk) for all general or subs enquiries;

- Alison Jackson (Scout Shop) on 01428 723248 or by email at [alisonjackson@btopenworld.com](mailto:alisonjackson@btopenworld.com) for all uniform or equipment enquiries.

If you are already a member of the Group or the parent of a member, then if you have a question about your section, then please contact the relevant Section Leader:

- Willow Beavers Colony (Monday) - Mark Boosey on 07949 408093;
- Ashdown Beavers Colony (Tuesday) - Mark Stocker on 07976 845670;
- Downlands Cub Pack (Tuesday) - Kevin Carrig on 01428 727063;
- Oakhanger Cub Pack (Thursday) - Trevor Holden on 01428 722810;
- Wheatsheaf Cub Pack (Friday) - Jez Turner on 01428 751926;
- Shackleton Scout Troop (Wednesday) - Nigel Woods on 01730 261072;
- Scott Scout Troop (Friday) - Sheila Woods on 01730 261072;
- Stirling Explorer Scout Unit (Monday) - Stuart West on 01420 474573;
- Thesiger Network Scout Unit (Wednesday) - Mark Boosey on 07949 408093.

*Any changes please notify Hazel Williams on 01428 722084*

# Learn Sign Language

In the UK there are approximately 1 million deaf people, of which 45,000 are children. After successive years of 'no government support' for British Sign Language (BSL), the UK now finds itself in a national crisis. The majority of deaf children have parents that cannot sign; schools with Hearing Impaired Units cannot find staff with signing skills; ditto for the charities that work in the social care sectors caring for the deaf in our community such as RNID / Action on Hearing Loss / The Royal Association for Deaf People (RAD). Shockingly, there are now only 1,000 qualified BSL interpreters for the whole of the UK.

As far as promoting deaf language and understanding, we contrast very poorly with America. American Sign Language (ASL) is now the 4th most popular language. Here, it is not even on the radar – despite being a recognised Native Language of the UK such as Gaelic or Welsh.

This has left a massive communications 'hole' and is creating damaging barriers for deaf people. Few hearing people are able to communicate with the deaf – even at a basic level. This also comes at a time where Deaf Schools and Deaf Clubs are being closed down. Many deaf people now lead lonely isolated lives with little or no human interaction with their hearing neighbours.

There is a shortage of organisations that teach BSL in the South East. This geographical pocket suffers unduly; not only with recruitment issues but in the wider teaching of family members of deaf children. Imagine visiting your family and sitting in the corner because no one can talk to you . . . unthinkable for a hearing person, but for deaf children all too common.

Also, people are reticent about signing up for a Sign Language course as they think it is too expensive. Any language course which lasts for an academic year is costly, but the hourly breakdown which you are paying is only about £6 per hour. Less than the average yoga class. Sadly, a number of colleges had to cancel their courses this year as not enough students enrolled - although the French, Spanish and German GCSE classes still ran - at the same cost.

Dot Sign is a community-serving 'not-for-profit' organisation, devoted to raising Deaf Awareness and the learning of British Sign Language. Dot Sign strive to create community links, particularly involving young people who are often seeing a deaf person and BSL for the first time. We can attend your School assemblies or Scout Groups for Question and Answer sessions, where

children take away a positive message about deafness. This exposure means that they are then less likely to 'recoil or avoid' speaking to deaf people which, sadly, is often the case with adults.

We understand that people do not want to commit to a course of learning without knowing if they have an aptitude for it. For this reason we run 'Taster Sessions' which last 2 hours (with tea and biscuits in the middle). Here you will learn some basics without having to worry about an exam at the end. You will get a 'feel' for whether BSL comes naturally for you and if you want to take it further.

**Don't learn a foreign language - learn a British one!**

There are currently Taster sessions running in Guildford and Woking and a new BSL Level 1 course starting in February 2017.

To find out more please go to:

<http://www.dotsignlanguage.co.uk/course/bsl-taster-sessions>

**Alternatively telephone: 01428 751561. Text: 07989 017945.**

**Email: [bsl@dotsignlanguage.co.uk](mailto:bsl@dotsignlanguage.co.uk) or find us on Facebook.**

*The Committee of the Liphook Community Magazine  
would like to wish all our readers a  
very happy Christmas with a good year to follow.*



*We would also like to thank those who have contributed  
to the pages of the magazine over the past year.*

Picture title: Little Nell By the Sea



*Picture by George Ayling*

