

Liphook

COMMUNITY MAGAZINE
SUMMER 2018



INSIDE THIS EDITION:

History of Liphook • Citizens Advice
Hollycombe Steam • Parish Council
The Ark • Red Kites

PARISH PEOPLE

Paul and Shirley Briggs

Shirley and Paul are ready to go. Their cupboards are empty, their precious collections of china and belongings safely packed and they await the journey across the Solent to The Isle of Wight, a place they have both come to love during many holidays there. Last year, when they were on holiday there they were tempted to look around Bayview, a development of warden assisted flats and realised that the facilities there would be more suited to their lives. Shirley suffers from Spondylitis and Fibromyalgia and requires constant care so Paul has given up his job to become her full-time carer. At the moment she wears a help button device which is self operating if she falls and has a blackout but Paul is always worried that she might be taken ill while he is out of the house. At Bayview a warden living on site could be summoned much more quickly in the case of an emergency. The development features a lovely communal lounge and a small guest suite which can be hired when family come to stay as the couple's two children and their families love to visit them. All these things helped them to make up their minds. As neither of them drive, the island's regular bus service was the icing on the cake so they decided to make the move.

This couple have generous natures, always working hard to make community projects successful and love to do things for the regulars who visit the Liphook Day Centre on Wednesdays. Although Shirley is poorly she puts on her 'outdoor face' when she leaves the house and I know this includes a big smile. They organise raffles and Shirley provides the prizes, making up colourful hampers of goodies, with beautiful sellophane wrappings and ribbons. She says that when she found out there was a Poundshop in Alton she was in her element. Shirley enjoys her job as Bingo caller and leads the singing sessions and gets through dozens of eggs when making cakes for the Centre. She tells me that new helpers and drivers are always needed.

The couple are well-known for their charity work which started with the charity MIND which does so much to help people to deal

with their unhappiness. Shirley helped to run a day group in Bordon. They baked cakes and provided raffle prizes when the Liphook village held its Macmillan Cancer Support Day.



They worked with TLC, a charity (standing for Tending, Listening and Comforting) which provided volunteers to help people suffering constant pain. Debra visited Shirley once a month to give her reflexology therapy sessions which were very relaxing. Later Heidi became Shirley's counsellor and they became firm friends, laughing about husbands and families. Paul and Shirley have worked hard with the TLC support group and the photograph of the pink-clad support workers show the team in action at a Blackmoor Apple Farm Open Day.



Liphook's most active fund-raising couple said their final goodbye to Liphook at the Millennium Centre, at the February monthly market, when they held a big raffle to raise more funds for the Liphook Day Centre. They both know that they are going to miss all their friends in Liphook and although Shirley says she needs to take life at a slower pace, with some quiet hobbies, such as crocheting. Paul thinks it will be difficult to 'rein her in' as her urges to help everybody are hard to repress. We wish this warm hearted couple all the best in their new home in Lake, in the Isle of Wight and may the sun shine on them often.



Photo courtesy of Liphook Herald

June Wright

Front cover picture of a Red Kite courtesy of R.S.P.B.

What's on in Liphook

8th June - Friday Film Night

Millennium Centre - The Greatest Showman.

9th/10th/11th June - Bramshott Open Gardens

6th July - Friday Film and Food Night

Millennium Centre - Darkest Hour.

6th July - Liphook Social Club

The Blues Boys. 7.00pm for 7.30pm.

7th July - Church Centre

Liphook Carnival's Fun Day.

9th July - St Pauls Church, Chichester

Fernhurst Coral Society. Verdi's Requiem. 7.30pm. Tickets £16.00.

14th / 15th July - Millennium Centre

MAD's Panto - The Mikado. 7.00pm for 7.30pm.

20th July - Friday Film Night

Millennium Centre - The Post.

21st July - Church Centre

B.L.D.U.S. Show.

3rd August - Friday Film Night

Millennium Centre - Three Billboards Outside Ebbing, Missouri.

The Liphook Magazine Spring Appeal 2018

THANK YOU to all our many Contributors

All the volunteers connected with the magazine - those who write the words, compile the pages, deliver the finished article and host the online edition - say a very big THANK YOU for your generous donations.

You have contributed over £1500, sufficient to cover more than 40% of the cost of one quarterly issue - a huge boost to our finances.

This, coupled with the income from our many loyal advertisers, ensures we can confidently continue to produce and also further enhance, future editions.

Thank you once again to everyone, we hope you continue to enjoy your Magazine throughout the year.

John Anthistle - Hon. Treasurer

The views expressed in this magazine are those of the contributors and not necessarily those of the Magazine.

Copies of this magazine can be viewed on the Liphook website as well as being delivered to your door by hand in the usual way.

www.liphook.uk - then go to Community Magazine

The Liphook Community Magazine

exists to help maintain, encourage and initiate aspects of community life in which individuality, creativeness and mutual fellowship can flourish.

It is produced and distributed by volunteers, free, to every household in the Parish of Bramshott and Liphook. It is financed by advertising and donations from individuals and organisations.

The circulation is 4,000 copies per issue

Contents

Red Kite	O.F.C.
Parish People: Paul and Shirley Briggs	I.F.C.
What's on in Liphook / Village Market / Magazine Appeal	1
Notice Board	2
A History of Liphook - Part Two	3
Liphook Library / Milland Valley Railway Modellers	5
Triggs and Me	6/7
Olivia Breen / Forthcoming Mad Production	9
Voluntary Care / Citizens Advice Bureau	11
The Webbs of Passfield Corner	13
Churches of Liphook	14
Churches of Liphook / Sampson and Me	15
Federation of Liphook Infant and C of E Junior Schools	17
Heritage Centre News	19
Hollycombe Steam in the Country Museum	20/21
A Welcome Splash of Colour in Liphook	22/23
Bramshott & Liphook Parish Council / Bramshott Open Gardens	24
Liphook in Bloom / Neighbourhood Development Plan	25
Liphook Carnival	27
News from the Ark Pre-School	29
Liphook U3A Open Day	31
Churcher's College	32
Spike Milligan and Me	33
B.L.A.C.S.	35
Red Kites	37
Poets Corner	38
Clubs & Organisations	39/40
Report to the Liphook Community Magazine	I.B.C.
Tri-High	O.B.C.

Magazine Committee

President: Margaret Wilson. Tel.: 722464

Chairman: Roger Miller. Tel.: 722859

Editor: Hazel Williams. Tel.: 722084

or email: hazel@jadehouse.force9.co.uk

Secretary: Patricia Worrall. Tel.: 723850

or email: quarwoodpw@talktalk.net

Treasurer: John Anthistle. Tel.: 723676

Distribution: Sue Knight. Tel.: 723502

Editorial: Mari Wallace, June Wright, Rod Sharp, Paul Robinson

Contacts

Advertisements Enquiries: Treasurer. Tel.: 723676

or email: mag@liphook.myzen.co.uk

Next Copy Date: 27th July 2018

Advertisements (Colour - cost each)	1	4 or more
Eighth page	£40	£35
Quarter page	£80	£70
Half page	£160	£140
Whole page	£320	£280

© Liphook Community Magazine and Authors

COPY: The Magazine is always interested to receive articles of Local or Historical Interest, Club News or Stories. Contact Hazel Williams or Patricia Worrall for more information. Email copy to: quarwood@aol.com

GENERAL DATA PROTECTION REGULATION 2018 - The Liphook Community Magazine has taken note of the new regulations and can confirm that the information we hold has been fully assessed. We are aware of our obligations to comply and confirm that individuals' data will not be shared outside the Liphook Community Magazine's Committee. A full copy of our Privacy Policy is available on request.

Whilst every effort has been taken to ensure the information supplied for inclusion in the magazine is accurate, responsibility cannot be accepted for any omissions or inaccurate information.

NOTICE BOARD

Bramshott Open Gardens

9th and 10th June, 11.00am to 5.00pm

"Can you see the people walking down our ancient, sunken lanes?
Can you see the ticket sellers, on the green", the guide explains?

Can you hear the Village Cryer as he calls us gather near,
And proclaims the Gardens Open for another umpteenth year?

Is the chap from Downton Abbey really cutting through the tape?
Does it matter if it's crowded and we stand around and gape?

Can we buy a winning ticket on the Grand Tombola stall,
And take prizes to the Car Park, which is free as I recall?

Will you come and see our gardens, both the large and very small?

Will you wonder at the effort that's expended by us all?
Will you join us in the Tea Tent, for a homemade, luscious tea,
Or are burgers from the Barbecue, the fare for you and me?

Come and smell the scented flowers on display within the Church.
Scan the Scroll for names of loved ones, as in pews you gently perch.

Why not listen to the music while it concentrates your gaze,
And join us here in Bramshott, for our special Open Days?

Angela Glass

Lasham Music

7th - 10th June 2018

Profits go to The Esseham Music Charity. Profits from the Festival go to providing grants to young pupils and students attending school or college within a 16 mile radius of Lasham Village.

For more details contact
www.lashammusicfestival.co.uk

West Meon Music Festival

14th - 16th September 2018

Marking the end of the first World War.

The Primrose Piano Quartet. Tickets from £12.00 including refreshments.

Tickets on www.westmeonmusic.co.uk or by post at:

Box Office,
Walnut Cottage, Hampton Hill,
Swanmore SO32 2QN

30 YEARS
dreams come true
CELEBRATING 30 YEARS OF DREAMMAKING

OUR BIG BIRTHDAY CELEBRATIONS!

It is Dreams Come True's 30th birthday in October, but we didn't want just one day that was special so we will be celebrating all year and we hope you'll join us for all the fun!

For more information telephone:

01428 726 330

Liphook Millennium Hall

In the future we hope to arrange family film shows on Saturday afternoons. We are looking for people to help choose the films.

If interested please contact The Events Manager, Millennium Hall

Headley Theatre Club

Headley Village Hall at
8.00pm on Friday 13th,
Saturday 14th, Friday 20th
and Saturday 21st July 2018.

"Over the Top"

A last reflection on World War 1, including the "Goodbye" episode from 'Blackadder Goes Forth'

The History of Liphook

LIPHOOK – On the Map at last!

Liphook was not mentioned as a village in the Domesday record of 1086 . Instead, there were three Manors (Bramshott, Ludshott and Chiltley) and two subsidiary estates (Oakhanger and Rogate-Bohunt) belonging to larger manors centred elsewhere.

The first indications of our modern village name came in the records of Bramshott Manor Court in which appear Robert of Lupe (1281), Matilda of Lhupe (1337) and William at Lupe (1365). Legal documents record that John Maunser acquired land and a tenement at Leope (1423) identified as between modern London and Headley Roads; Sir Edmund Pakynham acquired land at Lepoke (1527); and John Hooke, a successful Godalming clothier, bought Chiltle Manor at Lepuck (1590). By the end of C16th, Liphook spelt variously as was common, was in use as a place name and began to appear on maps from early C17th: John Nordern's map of 1607 (shown) spells it as Lippocke. We were on the map at last !

The name is commonly understood to derive from 'a leaping place' at an enclosure or 'hoc' of land. The East Hants District Council identify this as being a deer enclosure between the modern London and Headley Roads, though some scholars are reluctant to place it so precisely. Flora Thompson, author of 'Lark Rise to Candleford', writing in her 'Guide to Liphook , Bramshott and Neighbourhood' in the 1920's placed the location there or thereabouts: 'In the heart of this lovely country . . . at a point where 6 roads meet and form the 'loop' from which it was probably named, stands the village of Liphook. Technically speaking

it is not a village at all, but a hamlet of the neighbouring but much smaller village of Bramshott.'

Bramshott was the more important location for centuries, appearing in the records as Brenbresete, Brembresete, Bremblesathe, Bremblesshute, and at least 3 dozen more spellings. Its early pre-eminence is reflected still in our parish title: Bramshott and Liphook and the location of our parish church. Bramshott was awarded to Edward de Salisbury in 1066, though it is unlikely he lived there, since it was one of 34 manors he was given, including Salisbury from which he took his name. He sub-let Bramshott to a knight who adopted it as his family name and whose descendants were in residence for around 500 years. William de Bramshott, second generation lessee, built a house in c1220 and a small chapel, which is the chancel of today's church. The first Manor Court recorded at Bramshott was on 28 October 1280 'on the morrow of the festival of Apostles Simon and Jude' and it continued into the C20th.

Neither of our other two manors – Ludshott and Chiltley – enjoyed such continuity. Ludshott, awarded in 1066 to Hugh de Port, was not lived in by him or his family. It was leased to William of Arundel, who made various grants of land fragmenting the Manor. The records of Ludshott Manor Court begin in 1400 providing access to justice only to the population of Ludshott. Chiltley, retained by William the Conqueror himself, for many years had no resident Lord. John de Chiltlee is mentioned in a grant of land to Selborne Priory in 1270 and by 1387 the family had adopted the name Weston. However, Chiltley Manor had no

Manor Court nor a Church and its few people looked to Bramshott for the sustenance of God and Justice, central to their spiritual and civic lives.

John Hooke, who bought Chiltley Manor in 1590 also bought Bramshott Manor around 1594, uniting the two . He built himself a new residence at Chiltley Place, the Gatehouse to which still stands.

The shifting of the centre of gravity from Bramshott to Liphook will be the subject of an article in the next issue. If you were not tempted to visit the Liphook Heritage Centre at the Millenium Hall by the article in the previous Community Magazine, go now to see the Exhibition: 'The Coaching Stop that Grew'.

Sources:

'A Hampshire Parish: Bramshott and Liphook' by Roger Chatterton Newman

'Liphook Calendar 1066 to 1989'
by Bramshott and Liphook
Preservation Society

Wikipedia





Keats

independent estate agents

keats.biz

SURREY SUSSEX HAMPSHIRE LONDON

1a The Square
Liphook
Hampshire
GU30 7AB

sales: 01428 724 343

letting: 01428 724 444

JFB UPHOLSTERY

Call Jo: 01730 821153 • 07544 300486

Traditional and Modern Techniques. Antique and Contemporary Work Undertaken. Nursing / Slipper / Dining Chairs, Ottomans, Piano / Foot Stools, Window Seats, Bespoke Re-covering Service and more.

jfb@qualityservice.com

Ryonen, Nyewood, Petersfield, GU31 5JA

LOCAL • FRIENDLY • RELIABLE

CHIROPODIST (PODIATRIST)

Regular visits to Liphook and surrounding areas

Patrick A. Brown MBChA MSSCh

Tel: 01730 821153

Ryonen, Nyewood, Petersfield, Hants GU31 5JA



Pooch Trekker

dog grooming & daycare 07923531999

New Groom Room now available!

Pooch Trekker has launched Julie's new Groom Room offering

- Full groom
- Full groom with hand stripping
- Bath and brush only
- Nail clipping

Hurry and get 10% off your first groom before 31st July 2018 using this advert!

10%

off first groom*

*ends 31st July 2018



Old Barn Farm Cottage
Hewshott Lane
GU30 7SY
Liphook



07923 531 999

info@poochtrekker.co.uk

www.poochtrekker.co.uk

LIPHOOK LIBRARY

Mischief Makers

Once again, your library in Liphook will be enthusiastically taking part in the annual Summer Reading Challenge which encourages children aged 4 to 11 to read six library books during the long summer holidays.

Children's reading can "dip" during the summer holidays if they don't have regular access to books and encouragement to read for pleasure. The Challenge helps get three quarters of a million children into libraries each year to keep up their reading skills and confidence, because everything changes when we read.



There is a different theme each year. Children can read whatever they like; from fiction to factual books, picture books to audio books, just as long as they are borrowed from the library.

They receive special awards (usually a sticker) when they finish a book and there's a certificate for everyone who completes the challenge.

It is open to all children of primary school age and is designed for all reading abilities. Schools work with local libraries and give out information to encourage children to take part. In addition to library staff, adult and teenage volunteers support children, helping them to discover new authors and explore a wide range of different types of books.

The theme for the 2017 Summer Reading Challenge was Animal Agents, illustrated by the UK's best-selling children's illustrator Tony Ross. A total of 761,758 children across the UK took part in Animal Agents at their local library, an increase of 6,550 from 2016.



The Summer Reading Challenge 2018 will be called Mischief Makers, inspired by the much-loved iconic children's title Beano, which celebrates its 80th anniversary. Children will explore a map of Beanotown to find the mysterious buried treasure and become ultimate mischief makers! Dennis, Gnasher and friends will help them solve clues and collect stickers, having lots of fun and adventures along the way!

More volunteers would be welcome at Liphook to help run this year's challenge which runs from Saturday 14th July.

Additional volunteers would also be much appreciated for Rhyme Time and Story Time on alternate Wednesdays from 10.30 – 11.00 a.m. Following the appeal in our Spring issue, there are now three volunteers who run these sessions but do get in touch at the library if you'd like to help out as it would be good to have more volunteers to provide cover for sickness and holidays.

The weekly Saturday morning Construction Club, on Saturdays from 09.30-12.30 p.m., featured in the Spring issue, has become really popular. Parents or carers are required to stay with their children for the duration of their visit.

And for the adults, the Reading Group which meets in the library on the second Monday of every month from 2.15-3.15 p.m. are always looking for new members. Refreshments are provided to assist the members in discussing their last book choice, collecting the next one and choosing future titles.

Rod Sharp and Ashley Adkin - Library Team Manager

Milland Valley Railway Modellers

Liphook U3A / Midhurst U3A - afternoon special interest group (formerly Building a Model Railway Group).

All Change!

A New Name. To come into line with the change from an instructional group to an afternoon club. **A New Venue.** From the May meeting we meet at Redford Village Hall, Redford, Midhurst GU29 0QF. **And New dates.** We have reverted to the third Wednesday of each month (no meetings in July August and December) and the hours are 14.00 to 16.00hrs.

No Change!

We are still a small friendly group (6) with copious quantities of coffee/tea and chocolate digestive biscuits throughout the sessions.

We are currently working on an N scale modern image tram layout-set local, which we hope to exhibit in October

Details

Subs are £20 per year (April 2018 to March 2019) plus Membership of Liphook or Midhurst U3A. Members of Petersfield, Haslemere or Woolmer Forest U3A's are also welcome.

For more information visit the Liphook or Midhurst U3A websites:
millandvalleyrailway.co.uk

or Email: model.railways1@liphooku3a.org.uk

We look forward to hearing from local railway modellers who would like to join us - **Happy Modelling.**

Tony Bettger

Triggs and Me

Our relationship goes back to the 1980s: I'd often wondered about the moderately well-known Arts and Crafts architect who lived locally at Little Boarhunt, off the Portsmouth Road. In the first part of the last century - Harry Inigo Triggs: an intimidating, heavily bearded figure, no doubt, looking rather like Society for the Protection of Ancient Buildings (the SPAB) founder and Arts and Crafts guru William Morris.

Business for me was a little slack in the late 1980s, and our Preservation Society historian Laurence Giles had, by way of giving me a bit of a prod, tracked down Triggs' surviving elder daughter, Margaret Triggs who lived at the Coxwells in Oxfordshire. This visit proved a revelation, with a treasure-trove of family albums covering the years from Triggs' marriage in 1907, to Gladys Hill (daughter of a Welsh coal-baron Sir Edward Stock Hill), all the way to his early death in 1923 ... and beyond. These albums were a series of large books containing not just photographs of projects and of family, but also drawings, records of events, visits to friends (and to clients), write-ups by visitors to the Triggs household and paste-ins of other documents. Other records included some practice photo albums, accounts and other more personal documents. After Margaret Triggs' death the information went to her nephew Wynyard Wallace, son of Triggs' other child Julia, who continued to give us access to it.

The reality was that Inigo Triggs was a rather jolly looking chap, especially when pictured with his young family. They moved to Liphook in 1909 after Triggs had joined his erstwhile (around 1901) employer W.F. Unsworth (best known for his Shakespeare Memorial Theatre in Stratford - subsequently burnt down) and



In the garden at Little Boarhunt: Triggs with his daughters Margaret and Julia.

his son Gerald in the expanded practice of Unsworth, Son and Triggs, based in Petersfield and in Sackville Street, London. Initially the family rented Yew Cottage in The Square (latterly the Royal Anchor Annexe, of unhappy memory, demolished in 1977 to accommodate the realigned Longmoor Road) whilst their purchase of Frys Farm off the Portsmouth Road was extensively remodelled to become their new home, Little Boarhunt.

Little Boarhunt was in a romantic Arts and Crafts style - a style which dominated the practice's style at least until Triggs' death (the practice continued under Gerald Unsworth until his death after World War II, and then under other partners until the 1960s - the last



Cooper's Bridge - just occupied.

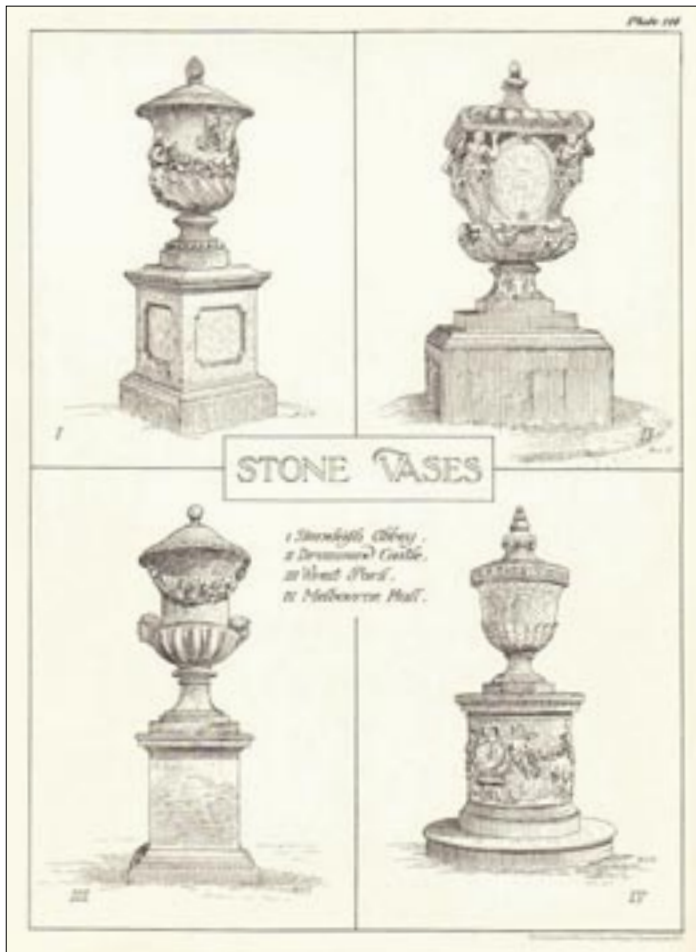
being Charles Piazza, who retired to Liss). In 1911, Coopers Bridge in Bramshott was built - with a small sunk garden, a stunning outlook over the dammed stream from Waggoners Wells and extensive outbuildings ... almost a 'model farm'. Triggs' first significant commission in Liphook itself was "Hailie", completed in 1913 for a Mr Carlyle. This small (by the then standards) house is a beautifully composed project with the 2-storey porch dominating the asymmetrical front elevation with a yew-hedged path leading from the Portsmouth Road to the front door and a Triggs garden design with a typical 'sunk' rose garden to the south side and an orchard (now largely built over) to the back. After the First World War, in 1922, the house became the Rectory and remained so until the new rectory was built next to the Church Centre in 2004.



Hailie - from the garden.

The chapel at Highfield School (1912) was designed by the practice. Their client Canon Mills had also commissioned to carry out other substantial projects - particularly the grand houses at Durford Wood (Hill Brow) - and they continued to work for the Mills estate for well into the 20th century.

Unsworth Senior had died in 1912, and the practice continued as Unsworth and Triggs. Gerald went off to war in 1914, and Triggs continued the practice - there was still work coming in in those days. Triggs, by the time the War started was aged 38 and in



A plate from 'Formal Gardens' - Drawn by Triggs ('H.I.T.').

uncertain health. For many years previously, he had been suffering from T.B., and had travelled to the Swiss Alps and north Italian Lakes as part of his 'treatment'. There he picked up commissions and undertook one of his two magnum opera on garden design "The Art of Garden Design in Italy" (1906 - the drawings and plans are still used as source-material today; his "Formal Gardens of England and Scotland" (1902) is equally impressive). There were other books too, less grand, which all helped to raise the profile of an aspiring architect and garden designer (it is this latter for which he is better known: his designs and writing were much referred to by Gertrude Jekyll in her writings).



The gateway on the Church Path.

Whilst in Italy he had also travelled south to Sicily - Taormina in particular which was a favoured playground of wealthy British families, including the Hill family and Gladys, who had a villa there. Triggs undertook a number of commissions there for the Hills and their connexions in the expatriate community.



Granny Bird outside Mill Lane; and two more generations - my father and daughter in Mill Cottage's porch.



Local work over the war period included Quarry House and Quarry Cottages (Wheatsheaf Common). Triggs was also becoming involved in local affairs. In late 1914, he became honorary secretary of the Liphook Sanitation Company, and had joined the Parish Council by 1917, becoming chairman in 1920.

In 1919 he contributed to the War Memorial Committee initial report, with a proposal to place this outside Ship House (now Lloyds Bank). Ultimately, of course, the Memorial ended up in Bramshott Churchyard (not to be confused with that for the War Graves by Sir Reginald Blomfield) where he also designed the charming gateway (alas, the gate itself has not survived) where the path from Radford Bridge enters the Churchyard. The War Memorial was one of several by the practice, to a variety of designs, including a pair as far afield as North Shields and Middlesbrough - both for the Smiths Dock company. In 1922 a fete was held at Little Boarhunt in aid of the new Church Rooms - recreated from wartime huts, and ultimately replaced by the Church Centre - and in the meantime he had been involved in the setting up of the Liphook Golf Club (its centenary is in 2021), adapting part of the Wheatsheaf Inn (now the Links) as its first clubhouse, and the small storage building, which I am sure is by Triggs, sits in the storage area opposite the Links and what is now the tenth tee ... but originally the first.

1923: Triggs was visiting Taormina and succumbed to his T.B. He was buried there in the Mortuary Chaple of the Anglo-American Church, which he himself had designed. He was aged only 47.

Enough about TRIGGS: what of the Me bit?

You may have spotted that I've been 'doing' Triggs for some thirty years now. Quite long enough, you'd think, for me to get my act together and write things up, and now that I'm practically retired, I no longer have any excuse! One final link, although I, for understandable reasons, didn't know it then: when a boy, I spent many days (and some nights) at my grandmother Bird's cottage in Steep. It was a delightful place to stay and to play, relaxed surroundings and happy atmosphere - and it was designed by Unsworth and Triggs!

Adrian Bird



Workers' Educational Association

Liphook Branch For enquiries :
Judith Harris: Tel 01428 609996
Sheila Martin Tel 01428 641907
Email liphookwea@gmail.com

AUTUMN 2018

LITERATURE: DYLAN THOMAS

10 week course starting on Wednesday 26th September

Under Milk Wood and the short stories

Tutor: John Haynes

LOCAL HISTORY: THE VICTORIANS

10 week course starting on Friday 28th September

A tumult of ideas and changes propel Britain towards the 20th century.

Tutor: Jennifer Goldsmith

Study Day

A SENSE OF PLACE : LYRICAL LANDSCAPES

Saturday 3rd November

Edward Thomas's poetry and artists' responses to the South Downs.

Tutors: John Haynes and Janet Sinclair

SPRING 2019

LITERATURE: REVOLUTION

10 week course starting on Wednesday 9th January

"A Tale of Two Cities" and "revolutionary" poetry.

Tutor: John Haynes

HISTORY: FRENCH KINGS AND EMPERORS

10 week course starting on Friday 11th January

The royal and imperial dynasties of France

Tutor: Colin Parrish

Study Day

THE DRAMATIC ART OF THE LONDON UNDERGROUND

Saturday 9th March

London's best as pictured on the walls of the Underground

Tutor: Mike Grundy

**Are you 25 or under?
Do you live in the Parish
of Bramshott and
Liphook?**

Can we help you?

The Trust is a fund to support young people by awarding grants to help towards the cost of educational activities. These may include educational trips, specialist courses and tuition, pursuit of sports, extra-curricular activities, purchase of books, specialist tools and other equipment.

See website for further information or to download an application form.

www.bramshotteducationaltrust.org.uk



LIPHOOK



THE UNIVERSITY OF THE THIRD AGE

The U3A is a self help organisation for people no longer in full time employment, providing educational, creative and leisure opportunities in a friendly environment.

The approach is learning for pleasure, with members running their own Groups by drawing on their own experience.

Liphook U3A has over 40 Groups covering subjects such as history, computing, crafts, photography, walking, trips out to places of interest and theatres, plus many more.

Our monthly meetings at the Millennium Hall are also very popular and we enjoy some very interesting speakers covering many topics of general interest.

If any reader would like to find out more or join, contact Paul Reynolds, Chairman, on 01420 768385 (E-Mail: chairman1@liphooku3a.org.uk) or membership1@liphooku3a.org.uk

There is lots of information on our website www.liphooku3a.org.uk

**guttersnipe
gutter cleaning**

local, professional gutter and window cleaning for domestic, rental and commercial properties



- Gutter clearance up to 15m (50ft)
- Soffit, fascia and cladding cleaning
- Gutter cleaning and repairs
- Window & conservatory cleaning
- Dry non-chemical roof moss removal

Tel: 01428 620308

Mob: 07427 148639

Email: laurie@guttersnipe.uk.com

www.guttersnipe.uk.com



GREAT SUCCESS FOR ONE OF LIPHOOK'S OWN

Olivia Breen

Olivia Breen has enjoyed great success in the Commonwealth Games in Australia, winning two medals. Her mother and father travelled there too and enjoyed a sunny holiday on the Gold Coast. Olivia represented Wales as her mother is Welsh and her grandparents live in Cardiff.

Olivia sent this message:-

"I have had the time of my life at The Commonwealth Games from Australia. Winning the gold medal for the long jump was like a dream come true but to go and win a bronze medal in the 100m was the icing on the cake. I have not stopped smiling. To compete in the integrated games was amazing and I really hope that more para events can be added to the next one. I am now looking forward to a couple of weeks off before starting my summer season".

June Wright

FORBIDDEN LOVE WILL SEDUCE LIPHOOK!

Forthcoming MAD Production

The MAD Company and Love to Sing Choir are reuniting on stage once more to bring a touch of style, elegance and a Japanese influence into Liphook when they return to the stage with Gilbert & Sullivan's operetta "The Mikado".

Following their successful two sold out performances of "The Pirates of Penzance" in 2017, both companies are combining their talents to perform another of Gilbert & Sullivan's comedic operas.

The cantata-style adaptation of this operetta, written by Vanessa K. Breach, will once again enthral audiences with another splendid version of the highly talented writings of this infamous pairing.

Carefully edited and condensed, this production is perfect for everyone; those who are new to Gilbert & Sullivan and also those who are already familiar with the show.

All the favourite choruses and solos are still very much in evidence in this hilarious tale of love; Nanki Poo loves Yum-Yum, only one snag, she is betrothed to Ko-Ko the new Lord High Executioner; to save his own head from the block he needs to find another to replace him and quickly! Who will be added to his list? Can an arrangement be found without anyone losing their head? Come along and be taken on a journey of love, intrigue and forbidden flirting in this hilarious comic operetta.

Rehearsals for the two companies have started in earnest for the two evening shows on **Friday 13th and Saturday 14th July 2018** at **The Millennium Centre, Liphook**.

Tickets are available by visiting www.thelittleboxoffice.com/mad from 1st May. More information can be obtained by visiting:

www.themadcompany.com or www.LoveToSing.com

or by emailing: singwithvanessa@gmail.com or themadcompany@gmail.com

The Mikado



Performed by
The MAD Company & Love to Sing Choir
The Millennium Centre
Liphook, GU13 0 7LD

7 for 7.30 13th & 14th July

Tickets Jo 01730 263152 or
thelittleboxoffice.com/mad

Hurry! Purchase your tickets to what is sure to be a fine tale of love and romance with a few dangerous liaisons and encounters along the way - chop chop!

Claire Fewings

AMBASSADOR CLEANING SPECIALISTS

01428 722551

www.specialistcleaningcompany.co.uk
info@specialistcleaningcompany.co.uk

Quick Dry Deep Cleaning

Carpets • Rugs
Furnishings • Curtains

All types of flooring, including tile and grout,
limestone, marble and granite



Cards • Gifts • Chocolates • Toys
Iron-on-Labels • Personalised Gifts
Balloons • Banners and Sashes

22 Station Road, Liphook GU30 7DR
Telephone: 01428 722 233
www.peepinside.co.uk

LIPHOOK BAKERY

We have available
freshly made Pastries,
Loaves, Sandwiches,
Cakes and much, much more.

We can do Sandwich Platters to order!

26 Station Road, Liphook
Tel.: 01428 727771
Open: Tues, Wed, Thurs, Fri
6.00am till 4.30pm
Saturday 7.00am till 2pm

NOW OPEN AT
34B Station Road, Liss
Tel.: 01730 893175
Open: Tues, Wed, Thurs, Fri 8.30am till 2pm
Saturday 8.30am till 1pm

LIPHOOK CARPET WAREHOUSE

- wood flooring • laminate flooring
- luxury vinyl tile • vinyl and carpet

Carpets from
£5.99 per sq meter



Big stock
of remnants
Free measure
and estimate

Tel: 01428 723513

Unit B, Bleaches Yard, Station Road, Liphook, GU30 7DR
(Down the road to the side of Countrywide, past Liphook Motors and to end.)

County Decorators

Based in Liphook



Interior/exterior painter & decorator with
over 35 years experience providing
decorating to high standards



For a free estimate contact Keith Keen:

01428 724536 - 07817 804352
countydec@gmail.com



Sew Heavenly Interiors

Beautiful handmade curtains,
blinds and soft furnishings for your home.

All individually crafted with exceptional attention to detail. We offer an affordable, personal service, including guidance with design, colour and fabric choice. We can source quality poles, tracks and fabrics to suit your needs. For more information please contact:

Alicia Jones: T: 01428 729856 M: 07788 702116
E: alicia-sewheavenly@hotmail.co.uk W: www.sewheavenlyinteriors.co.uk

Based in Liphook on the Surrey/Sussex/Hampshire border

THE PARISH OFF BRAMSHOTT AND LIPHOOK

Voluntary Care

We cover Bramshott, Liphook and surrounding areas with our pool of volunteer drivers. These drivers are in no way committed to being available at any specific times, so there is no such thing as being "on duty".

The co-ordinators take the incoming calls from clients with the details of their appointments along with their requests for transport. They then ring around the pool of drivers to find one who is available and is prepared to take the client. The co-ordinator then phones the client back with the name of the driver and the time they will be collected. We do not make any charge for this service, but the clients if they wish can make a voluntary donation towards the running costs of the charity and our drivers all have envelopes available which donations can be put in and sealed. These donations are all passed to the Treasurer who reimburses the drivers at regular intervals with a government approved mileage rate, depending on the journeys they have done. This mileage rate is intended to cover the running costs of their car and nobody receives a payment for their time. I would stress that we are all volunteers giving our services for free.

The demands for our services have increased considerably in recent years, but unfortunately there is a shortage of volunteer drivers, without whom Voluntary Care could not exist. During 2017 we provided support with transport to 150 different people,

51 of them only once but 32 others between 10 and 43 times each over a period of one year. During 2017 there was an approximate 9% increase in the total number of journeys Voluntary Care undertook on behalf of clients from 851 to 930. Allowing for quiet periods such as Christmas and Easter we averaged just under 20 journeys a week, but on some weeks considerably more. Unfortunately the number of drivers we have available at any one time has not kept pace with the increase in demand. Over the last year the number of drivers we have has dropped from 49 to 38 a decrease of over 20% and at any one time those available will be considerably lower due to illness and holidays. If every week followed the average things would be manageable, but of course we have weeks of peak demand where we may have up to 30 requests for transport.

Voluntary Care has been in existence for nearly 40 years providing this very valuable service to our community, but its continued ability to provide this service is under threat due to a lack of people prepared to come forward and volunteer as drivers. So please if you or anyone you know is prepared to give a little of your time to put something back into our community and help you would be very welcome. You never know one day it might be you who needs our help! For more information ring **01428 722292**.

Geoff Goldsack



EVERYBODY NEEDS A LITTLE HELP SOMETIMES

Citizens Advice Bureau

There are many reasons why people come to see Citizens Advice but the vast majority pay us a visit because they have experienced difficulties in their life. The sort of difficulties can include illness or disability, loss of income, redundancy, relationship breakdown, all of which may result in a reduction of income and leave people struggling to meet their essential living expenses.

Citizens Advice can provide guidance to access help and to determine if income can be improved under these difficult circumstances. In this article we will look at the help available from the welfare benefits system. There are two main types of help that can be provided, namely **means-tested benefits and non-means tested benefits**.

A **means-tested benefit** means that your income will be assessed to see if you qualify for assistance. For example, if you are of working age you cannot claim any means-tested benefits if you have more than £16,000 in savings. This includes the savings of your partner, whether you are married, in a civil partnership or just living together. Savings of more than £6,000 will affect how much help you may get from some benefits. Savings under £6,000 are disregarded for benefit purposes.

So, what help might you get if you are:

Made redundant: Jobseekers allowance (JSA) is available to people who do not have a job and want to find employment.

Off work because of ill health: Employment and support allowance (ESA) could be paid if you are unable to work due to ill health. You will have to supply medical evidence to support your claim and you will attend an assessment about your ability to work.

On a low income: You may be eligible for Working Tax Credit (if

you work sufficient hours) or Child Tax Credit (if you have children). Some carers and parents of young children may be entitled to claim Income Support. If you are on a Pension, you could be entitled to Pension Credit. If income is tight, you may qualify for Housing Benefit (to help pay your rent) and/or Council Tax Reduction (to help with your Council Tax bill).

A **non-means tested benefit** means that if you qualify for the benefit, for example because you are disabled, your finances are not taken into account.

Disabled: If you need extra help because of an illness, disability or mental health condition you could get Personal Independence Payment (PIP). You don't need to have worked or paid National Insurance to qualify for PIP, and it doesn't matter what your income is, if you have any savings or you're working.

Elderly: If you are 65 or over you might be able to claim attendance allowance if you have a disability or illness that makes it hard for you to look after yourself.

Carer: If you look after someone who qualifies for a disability benefit, for at least 35 hours per week, then you may be entitled to claim Carer's Allowance.

If this all sounds a bit complicated you can go to the Citizens Advice website (www.citizensadvice.org.uk) or pop into our Tuesday Citizens Advice session between 10:00 and 13:00 at the Millennium Hall, Ontario Way, Liphook, Hampshire GU30 7LD.

We look forward to helping you.

Cathey, Terence, Alan and Andrew - Citizens Advice, Liphook



Downsizing?
Selling up?
Clearing out?
Too many books?

I buy interesting books and give them a good home.

Books bought and sold
Let me find that elusive book for you

Ring Paul Robinson
Amazing Book Company
07968 429227



SMALL WORLD VET CENTRE
PHILL ELLIOTT BVM&S MSc MRCVS

32 STATION RD, LIPHOOK, GU30 7DR
t: 01428 788659

- Complete vet care, all in one location
- Separate facilities for dogs & cats
- 15 minute appointments
- 24 hour on-site emergency care provided to registered clients by your own vet & nurses



£10 OFF YOUR FIRST CONSULTATION
WHEN YOU REGISTER WITH THIS ADVERT
QUOTE LCM03

Small World Vet Centre @smallworldvets Small World Vet Centre

C.J. Hampshire

Tel: 01428 722416

28 STATION ROAD, LIPHOOK, GU30 7DR

email: mail@cjhampshire.co.uk
www.cjhampshire.co.uk

- We price match
- Experienced staff
- Competitive prices
- All leading brands supplied
- Free local delivery
- Member of Euronics
- Specialist agents for Miele and Panasonic
- Free installation excluding built in and gas appliances
- Television installation and set up
- Free quotes and advice to replace built in appliances
- Qualified service engineers able to repair most brands

OPEN ALL DAY

Monday-Friday 9am to 5pm, Saturday 9am to 3pm



▶ Washing Machines ▶ Fridges/Fridge Freezers ▶ Dishwashers ▶ Vacuum Cleaners ▶ Televisions ▶ DVDs ▶ Radios



Panasonic



BOSCH

ZANUSSI



The Webbs of Passfield Corner

"The Webbs, Sidney and Beatrice, officially The Right Honourable the Baron and Lady Passfield, are a superextraordinary pair. I have never met anyone like them, either separately or in their most fortunate conjunction. Each of them is an English force; and their marriage was an irresistible reinforcement. Only England could have produced them." So wrote George Bernard Shaw in his introduction to one of the Webbs many books.

Theirs was a true marriage of minds, both of them self taught and committed socialists. Beatrice Potter (no rabbits) was born in 1858 into an affluent upper middle class family, theirs was a life of large Cotswold houses, country estates and lavish garden parties. The family took a London home for the season when one by one their nine daughters would be presented at court to the Prince of Wales.



Beatrice, a tall, elegant, handsome girl came to despise the worship of privilege and power and the flaunting of wealth, instead she was to become a major force in the socialist movement. Choosing to live and work in among the working class in areas of real deprivation such as the mill towns of Lancashire, Tower Hamlets and Wapping she saw many examples of grinding poverty in the Victorian slums.

In 1885 she joined the Fabian Society just three months after it was formed which was to have a profound influence on British politics by advancing the principles of democratic socialism by gradual reform rather than revolutionary overthrow. It was through the Fabian Society in 1890 she was to meet Sidney Webb her future husband.

They were, in the opinion of many, an ill matched couple. He was working class, the son of a hairdresser, a short rotund little man with bulbous eyes and the trace of a cockney accent who, by dint of sheer hard work, advanced his career in local government departments. Sidney was besotted with Beatrice but initially his advances were rebuffed. Although she admired his work ethic and, more importantly, his political views. They agreed to keep their relationship secret as Beatrice knew that her father would never approve of Sidney. When Sidney suggested that he have his photograph taken for her she said "Let me have your head only – it is the head only I am marrying".

They were not to marry until 1892 shortly after the death of her father. He left her a private income for life which was to support both Sidney and herself and the research projects they were to pursue.

The London School of Economics (officially The London School of Economics and Political Science, often referred to as LSE) is a public research university located in Westminster it was founded in 1895 by Fabian Society members Sidney Webb, Beatrice Webb, Graham Wallas, and George Bernard Shaw for the betterment of society.

Beatrice Webb, because of her unique experience of work in slum areas, was elected a member of the Royal commission on the Poor Laws and Relief of Distress (1905-1909) which was commissioned by the Conservative Government of A.J. Balfour and its final report was submitted to the Liberal Government of H. H. Asquith. Beatrice herself was the lead author of a dissenting minority report which sketched out the outlines of a Welfare State which would; 'secure a national minimum of civilised life, open to all alike, of both sexes and all classes, by which we meant sufficient nourishment and training when young, a living wage when able-bodied, treatment when sick, and modest but secure livelihood when disabled or aged'.

In 1913 Beatrice and Sidney Webb co-founded the 'New Statesman' with George Bernard Shaw and other members of the Fabian Society. It was a political and cultural weekly magazine. It was to publish contributions from philosophers, economists and politicians including George Bernard Shaw, and John Maynard Keynes.

The Webbs were not to become members of the Labour Party until 1914 after which they both became active members. Sidney became the Member of Parliament for Seaham, a small coastal town in County Durham, in the General Election of 1922. He held several positions in the Labour Government of Ramsay MacDonald.

Sidney and Beatrice moved to Passfield Corner in 1928 and lived there for the rest of their lives until their deaths in the 1940s. The house was to become a Mecca for politicians of all parties and latterly, because of their interest in the communist government of Russia, Soviet leaders. Sidney was raised to the Peerage as 1st Baron Passfield in 1929. Typically Beatrice did not refer to herself as Lady Passfield or expect others to do so.

The Great Depression of the 1930s brought about the National



Government that virtually split the Labour Party and the Webbs began to take a greater interest in the Stalinist government and, following fact-finding missions to the USSR, they believed that the social policy adopted in Britain could be applied to the Soviet Union. They seemed to be oblivious of the brutal regime operating in Russia with particular regard to its agricultural workers. Historians have since criticized the Webbs for allowing themselves to become apologists and propagandists for the barbaric Soviet system.

The Webbs did not have any children but in retirement Beatrice would often reflect on their other progeny which included the foundation of the London School of Economics and 'The New Statesman'. In this centenary year of women's suffrage it is well to remember that while never a suffragette nor even a suffragist, Beatrice did more to improve the conditions of working class women long before the campaign mounted by the Suffragettes achieved the vote for 30 year old middle class women.

When Beatrice Webb died in 1943 a casket containing her ashes was buried in the garden of Passfield Corner in accordance with her wishes. Four years later Sidney's ashes were buried alongside her. Shortly afterwards George Bernard Shaw mounted a petition to have their remains moved to the nave in Westminster Abbey where they were later joined by those of Clement Attlee and Ernest Bevin.

Paul Robinson



THE CHURCHES OF LIPHOOK



LIPHOOK CHRISTIANS WELCOME YOU TO THEIR SERVICES

CATHOLIC CHURCH

Our village is still sufficiently close to rural parts for one to notice how the Gospels, despite the gap in time and in culture, still find an echo in our daily lives. One of the most evocative aspects of our village scene are the hanging baskets and the flower beds near the town centre. As I have previously said, I am struck by the energy of those who give so generously of their time and effort to presenting 'Liphook in Bloom'. The results are the fruit of many hands one can see at work on Saturday mornings. Despite the threat of more and more house building on the outskirts, the centre still presents a brave face.

I see this as an image of our church life. So many

parishioners give their time and talents to fostering this life of the family of God. And we are here because of the faith and work of so many before us.

But the fact that by residence here, we share in the life of our village is a call to be involved in any way we can in sustaining it. We are trustee of its future, we who enjoy the legacy of the past: how can we best promote this? In my position I am aware of how much service is given to the less fortunate 'under the radar' as it were by people who would only say, "well it's just part of my job" But this all builds up to sustaining our village as a living community.

Rev Mgr Provost Cyril Murtagh

METHODIST CHURCH

Have you ever felt unprepared or inadequate for a task? Perhaps you've been left to get on with something and felt that the tools, or the instructions or the training or the support was inadequate.

I imagine that Jesus' disciples may have felt similar when they stood staring into heaven as Jesus ascended. He'd just told them to be his witnesses in Jerusalem, Judea, Samaria and to the ends of the earth. That's a big job by any definition. Perhaps they were staring into heaven in disbelief that he could give those instructions and then simply disappear.

But that's not the whole story. Later they remembered something else that he said: "you will receive power when the Holy Spirit comes on you".

The coming of that power is described in the next chapter in powerful terms as a "violent wind", "tongues of flame" and being "poured out". It is as though the feeling of inadequacy evaporated and confidence grew.

If you've ever been struggling on your own and then found the load lightened by a helping hand you'll understand what this was like. Suddenly they were not on their own; God's power was at work in them – not just their own.

The good news is that the Holy Spirit is still at work today in God's people; God still gives gifts to each of us. So you don't have to do it all by yourself. There are others also doing God's work and but God himself will also inspire, strengthen and equip you.

Reverend David Muskett

TRINITY CHURCH

What price life . . . ?

I was asked by a consultant a couple of years ago when starting some investigations that had begun as a result of something found following a brain scan: '**Jim are you afraid of death?**' My response was instinctive, I laughed, '**well I'm certainly not looking forward to the process of dying, but I have no fear of death . . . I'm a Christian!**' As such I believe that God is the author and the giver of life . . . all life, that each life has equal value before God who has made us in His image, for His glory

But what is pressing on my heart at the moment is the epidemic of violence that appears to be spreading from our capital city London, in the last year by way of knife and gun crime – with homicides up 44% in the last year alone. As I write on the May Bank Holiday weekend there have been four shootings in London, another in Liverpool and several fatal stabbings. Perhaps what is really disconcerting is that most of it relates to young people . . . The youngest seriously injured was just thirteen. That there is a '**contagion**' effect is clear, that it is self-feeding on social media is equally clear . . . But it begs the question why has '**life become so cheap?**' Have we started to lose the

value of life in wider society? Are we no longer shocked by the increasing abortion figures or the move towards acceptance of euthanasia?

Against all of this, by way of stark contrast, stands the Christian message of hope, that Christ came and died, '**that we might have life, and have it more abundantly**', viewed on the surface that might be considered a massive failure but that would be a short-sighted understanding because the life we can have in Christ, is eternal, beyond the reach of gun and knife and even sickness

Our nation needs prayer, it needs '**hope beyond the grave**', in short it needs Christ! It is such truth that will set us free from the tyranny of fear and hopelessness.

*Love in Christ,
Pastor Jim Downie*

Trinity Church now meets at the Liphook Infants School GU30 7QE every Sunday morning @10.30am. All are welcome to join us. For further information call 01428 713293 or visit www.trinitychurch.tc

CHURCH OF ENGLAND

Miracles

Do you believe in miracles? It's a question that I would have instinctively said "yes" to – until I saw one. I had been a Christian for many, many years. I had heard amazing stories about God answering prayers in amazing ways, and had encountered God answering my prayers in amazing ways, but not in any way that could be counted miraculous by your average cynic.

Then I went to India. I was with a friend who likes to pray for miracles all the time and I saw one. Not just one but many in fact and some even after I had prayed for people which was truly miraculous because despite my faith I really couldn't believe what was happening. We get so conditioned in life and when something jumps out of the box that goes beyond rationalisations its profoundly challenging.

I noticed just the same curve of disbelief when I took a team recently to the very same place and they saw some beautiful,

incredible, and life changing miracles as well. I think my favourite was a little girl who had a paralysed right hand. This would mean in that culture that she would never be able to feed herself, because people don't eat with their left hands. It was the first time my friends had prayed for anyone in India and they were nervous. They started praying and this little girl just started moving her hand so naturally as if she had always done it. But she hadn't as the looks on her parents faces spelt out. Having believed in miracles for many years – but really not believed in them – I've seen too many now to not know that they really do happen. This is so exciting, because so many of us need a miracle. In my job I'm used to meeting so many people who look well put together and sorted, but who really aren't because we all have problems. So if you could ask God for anything today what would it be? Give it a go – ask him, and see what happens.

Rev. Valentine Inglis-Jones

U3A CREATIVE WRITING GROUP

Sampson and Me

Sampson and me, we look after each other, Sampson and me.

We both move a little slower these days and that suits us both just fine. We've got our little routine that gets us through each day and we can sense when the other is struggling a little - Sampson and me.

It's just the two of us now since my dear Janice passed away. I know Sampson misses her too. I've even seen him sitting on the hearth rug looking up at her pictures on the mantelpiece. She loved him like she had our children - did sweet Janice. No, now it's just us two, Sampson and me. We like it once Spring starts to come around and we can wrap up and sit outside out of the wind. The warmth of the sun does something for our bones. We take our daily stroll up to the village he waits outside the shops. We're well known around the village and he attracts plenty of pats and chats while he waits for my return.

I wish I could stretch out like he does, but I think I'd not get back up. His head is still so noble and his tail still hyperactive. It's the bits in between that cause him trouble, that little bit of extra girth and those aching bones. He gives a woof at 7.00am far better than any alarm clock. I go downstairs and let him out to scare the pesky pigeons. He doesn't chase them now, just calmly ambles about our patch. People say I should move to a smaller place, the family say so too, but I'll not move all the while Sampson's still with me. That would seem unnecessarily cruel for the both of us.

All the while I can still drive I'll take him to the places he loves to go. I have a ramp to help him up and down, there's a nice homely rug on which he lays. He loves going to the sea and I try to do it once a month, come rain or shine, we'll go. He doesn't brave the waves these days or the pebbles on the beach for that matter. No, the promenade is fine for us both with the benches to stop and sit and gaze across at the Isle of Wight. It's as if he savours the salt on the air as he sits with his head held high and the breeze ruffling his fur. In the summer's heat he'll just sprawl and slap his tail when people stop to chat as if to muscle in on the act, "and me, I'm here too!", he nuzzles for a stroke. We're known as regulars to a few of the cafés along the front. Sampson charms

the staff and gets his bowl of water when we sit outside, sometimes there's even a bonio presented to him which he gently takes and offers a paw in gratitude. By mid afternoon we're ready to wind our way back home before the rush-hour traffic snarls and frustrates.

When we get home he knows when it's time to be fed. He'll follow me into the kitchen and sit looking up at me. His head follows me round the kitchen. When he sees me reach for his bowl his front feet begin a little fidgety dance in anticipation. I stoop to put the bowl down and he almost pushes me aside. He belies his age where his appetite is concerned! After we've both eaten and I've cleared up, he's ready to lie at my feet as I watch the television.

Twice a year we have a battle when it's time for a bath for Samson. Clean water and shampoo are guaranteed to make him forget his age or aches. After I've triumphed he'll forgive me and come closer to be groomed. We've tried bathing outside in the garden, but that only gave him a bigger area in which to try and evade the water. I find the bathroom a more restrictive environment, but he gets wary when I try and entice him up the stairs.

The grandchildren are keen for me to skype them. Although I'm pleased just to chat and hear their news. No, it's Sampson who's the star of the show for them. I put the laptop on a chair and they ask him to go and fetch a toy or his butcher's bone to show them which he proudly obliges. As evenings wear on we're both inclined to doze. It's a case of which one of us will stir first to go to bed. If it's him, I'll either get a cool snout thrust in my face or, if he's feeling more generous, a lick from his tongue. If it's me, I'll say "Come on ol' fellah – time for bed." I open the back door and he'll go for a mooch around the garden. Sometimes there will be a growl for any other uninvited guest on his patch. He'll come in cocky if he's had the pleasure of a growl. I put some fresh water in his bowl and pour myself a glass of milk. I wait for him to settle in his basket. I bend down and give him a goodnight pat and thank him for his companionship. I turn the light out as I leave the kitchen and hope we'll both be here come the morning.

We look after each other, Sampson and me. If angels were dogs I'd like to think he'd be a long-haired cream coloured one.

Richard Gould



ROBERT HERRON BDS.DPDS
DENTAL SURGEON

**PRIVATE DENTAL
CARE
FOR ALL THE FAMILY**

DENTAL PRACTICE
6, HASLEMERE ROAD
LIPHOOK, GU30 7AL

TEL: 01428 723096

NEW PATIENTS WELCOME

PLEASE TELEPHONE FOR A
PRACTICE BROCHURE.

Liphook Art & Framing

Tel.: 01428 724331

47 Headley Road, Liphook, Hampshire GU30 7NS
info@liphook-art-framing.co.uk www.liphook-art-framing.co.uk

*Bespoke In-store Workshop Framing • Art Gallery
Numerous Artists Materials • Limited Edition Prints
Stationery • Greetings Cards • Gifts
Craft Kits (Candle Making, Airfix, Painting by Numbers etc.)
Photocopying • Ready Made Frames • Mount Cutting*

**9.30am - 5.00pm Monday to Friday (closed Wed afternoon).
9.30am - 2.00pm Saturday. Free Parking.**

Kate Land

Master Nail Technician
with over 15 years experience
Specialising in natural looking nails

- Shellac
- Bio Sculpture Gel
- LCN Hard Gel
- Fibreglass
- Pedicure & Manicure

Liphook 07767 334034



Picalily GARDENING

*Hate Mowing, Weeding, Hedge Cutting, etc.
...We Love it Here at Pic-a-lily*

Let Us take the backache out of having a lovely garden. With our friendly, flexible, personal service, we offer anything from weeding to garden clearance. No job too large, no job too small.

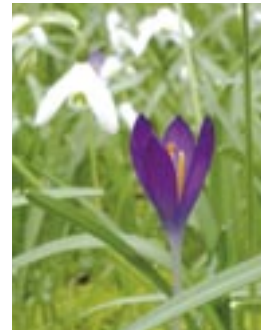
Rain or shine you'll see us out there!

**We can supply decorative bark, shingle, slate, etc.
Composts and top soil. Fencing, trellising, etc.**



All your Garden needs -

- Mowing, strimming and turfing
- Hedge cutting, pruning to small tree removal
- Weeding to rotavating
- Plant and shrub care
- Leaf clearing to garden clearance
- Green waste removal
- Gutters and drains
- Paths, patios and drives, created and cleaning
- Fencing, panels, chestnut, post & rail, closed board etc.



A vast range of plant material at very competitive prices

For a free friendly quote call Pete on:

0777 587 4988 / 01730 894429

Email: picalilygardening@gmail.com Web: pic-a-lily.co.uk

NEWS FROM THE FEDERATION OF
Liphook Infant & Junior School



Damian Hinds came to open the newly laid running track. We are keen to promote fitness and the children have enjoyed running 'the golden mile' every day.



The Junior School choir enjoyed joining with thousands of other school children to perform in front of family and friends at the O2.



The Juniors enjoyed taking part in 'Liphook's Got Talent' and raising money for Cancer Research.



The children enjoyed taking part in a wide range of science activities as part of Science Week. Bohunt and Mill Chase Academy staff gave science demonstrations which really enhanced the week.

LIPHOOK EYE CARE
Independent Opticians

Contact Details:
Telephone: 01428 725158
Email: liphook.eyecare@outlook.com



Sunglasses £99 including Standard Single Vision Lens



Non - Polarised Polarised

Upgrade to a polarised lens for £50!
Upgrade to Multifocals with a £50 reduction off the lenses!

FROM SELECTED RANGE* - SEE IN STORE FOR DETAILS

31 Station Road, Liphook, Hampshire, GU30 7DW

Need Help with your Accounts or Tax Return?

www.jmbaccounting.co.uk



JMB ACCOUNTING

Contact JMB Accounting on
01428 727313

or call in for a chat
10 London Road Liphook

We're friendly and very approachable!





BRAMSHOTT GRANGE
A CARE HOME BY MAYFLOWER CARE HOMES

NOW OPEN

Purpose built luxurious care home offering quality residential and dementia care. With a range of facilities and services all included in the weekly price, to include:

- Gym • Cinema • Beauty Salon • Bar

All on hand for residents to enjoy daily.

Arrange a visit today to find out how you could make Bramshott Grange your new home.

Tel: 01428 853393 E-mail: care@bramshottgrange.co.uk

www.mayflowercc.co.uk | 01428 853393 | Bramshott Grange, Connaught Drive, Liphook, Hampshire GU30 7GZ

Heritage Centre News

Val Gaskin, one of the stalwarts among the volunteers at the Heritage Centre, addressed the Bramshott and Liphook Preservation Society's recent AGM, focusing on the HC's anniversary. Indeed, it's been seven years since the Laurence Giles Archive, which formed the basis for the HC's growing collection, was moved from Adrian Bird's office to its cosy home upstairs in the Millennium Centre.

This was 2011 . . . and the new volunteers were "mostly strangers to one another at the time, brought together by Adrian and the late Joanne Elliott. Jo pointed us in the right direction through a daunting maze of T-boxes, never failing to share her extensive knowledge of the archive . . . Little did we know how much local information was contained in Laurence's boxes, indeed enough material to produce many exhibitions, starting with our first challenge: a pocket history of our parish, entitled Liphook, The Coaching Stop that Grew. It was anything but pocket sized, and went on to be displayed in the cricket pavilion at the Rural Life Centre (Tilford, near Farnham)."



Ariane Giles officially opens the Heritage Centre.

items such as war medals, photos of long-lost-relatives, letters and postcards, trench art etc. - just overwhelming us at times." The HC held a painting competition for Liphook Junior School, and also exhibited wonderful artwork created by Bohunt pupils. At the same time, the volunteers produced an updated version of Laurence Giles' previous exhibition of D Day/World War Two "Our two exhibitions overflowed from the centre and extended along the whole of the landing as well!" Val remembers.

The list of exhibitions created over the past seven years is impressive. A village view of Queen Elizabeth's Coronation . . . Liphook shops . . . Bohunt Manor relics . . . The Green Dragon . . . The Seven Thorns . . . Liphook Post Office . . . Liphook Railway . . . Moss Edge Tools . . . The Berg Estate . . . Flora Thompson . . . the Rex Cinema. "Have I forgotten anything?" Val asks herself. "In each case we involved our local residents and received a huge amount of memorabilia which helped to bring each subject to life, and raise interest and awareness of us in our community."

Thanks to generous donations over the years, including support from the Preservation Society, the HC has been able to purchase additional permanent display boards which has enabled them to create exhibits rather than leave material to languish in drawers, never to be seen. Equipment has been

upgraded and/or replaced. Items include a "fantastic laser colour printer, a superb laptop and up-to-date recording equipment." With the latter, the HC volunteers are in the process of producing an oral history of past Liphook life in the words and voices of local residents.

A fairly recent donation of two insignificant looking notebooks certainly surprised the volunteers. "It contained a collection of early 20th century news cuttings providing a fascinating insight into life in the district as it was 100 years ago, probably covering a span of 30 years or so. These are in a very fragile condition, almost flaking away in parts, and we have since stored each page in acid-free pouches and indexed the contents so that they can be read or photocopied without fear of damage."

Members of the public are always welcome - opening hours are listed below. There is a computer specifically for public use, on a read-only basis. "On this we have already stored many of our photographs and some reference indexes." The HC has hosted local schools, especially in connection with Canada Day, and has also welcomed volunteers from several other Heritage Centres. News of the HC's work is spreading, and they have had visitors from as far away as New Zealand!



Heritage Centre Volunteers. Reproduced by kind permission of the Farnham Herald.

AN APPEAL FOR MORE VOLUNTEERS! After reading the above, I'm sure there are people in the community who would be keen to help out. There's a lot of material that still has not been recorded or stored. Volunteering 'duties' on a weekday opening would include 'meeting and greeting' visitors and assisting with finding information (which is well indexed), or copying and filing documents onto the computer. Volunteers are also needed when the HC is open to coincide with the Village Market which takes place on the second Saturday each month downstairs in the Millennium Hall.

We are very lucky to have the Heritage Centre here on our doorstep. If you haven't been before, go now! Opening hours are: Mondays and Fridays, 10.00-12.00; Wednesdays 2.00-4.00pm. Saturday mornings to coincide with the Village Market: 9th June, 14th July, 11th August.

**Email: enquiries@liphookheritage.org.uk
Telephone: 01428 727275**

Mari Wallace

Hollycombe Steam in

I know it's almost summer time but cast your minds back to the last Sunday in April – bitter cold, biting wind – more like January than April. Because of my deadline for this issue of the Community Magazine, that was the day I had to visit Hollycombe. And to my surprise, despite the inhospitable weather, there were hordes of people – mainly families with young children – taking full advantage of all the fun of the steam fair, all smiling, definitely enjoying themselves.



The Quarry Railway was practically full when we sat down in one of the open carriages. It tooted and whistled as it chugged along the track. The woods alongside were blessed with boundless bluebells – picture postcard 'Englishness'. When the train driver made his usual stop to allow us to view the glorious Sussex Weald stretching

out below us, we all 'oohed' and 'ahhed' as expected. I felt like an 'extra' in the film 'The Railway Children'. Or a re-reading of 'Thomas the Tank Engine'.

Although we didn't go on all the rides, we stopped and admired the brave people way up on the 'Big Wheel' and those being thrown about on the 'Razzle Dazzle'. The latter is the only one of its kind (about 110 years old!) left in the world, the original 'white knuckle ride' that spins and tilts. We saw happy families riding on the merry-go-round, the Golden Gallopers. Built c.1912, it has 24 horses, 6 cockerels and 2 chariots, and is driven by a Tidman steam engine with music provided by an 1880s 62-key Gavioli trumpet barrel organ! Simon Wildgust, the new (as of December) Museum Manager, took us on an informative tour, covering every aspect of the Steam Museum. One fascinating bit of 'trivia' for me, as an American, was that although both the American and the British use the term merry-go-round, the



word carousel is only American and mainland Europe, whereas the word roundabout is only used by the British. Another difference is that while the British merry-go-rounds turn in a clockwise direction, carousels go anti-clockwise. You live and you learn!



The merry-go-round is a forerunner of the gallopers. Hollycombe's 'Golden Gallopers', built c.1912, with its 24 horses, 6 cockerels and 2 chariots, driven by a steam engine, is thought to be the only one still operating.

There are many more rides to be had – just look at their website – www.hollycombe.co.uk You'll find something for everyone.



We bravely went into the Haunted Cottage where uneven floors creaked and bucked. We held hands, as we crept around the jagged passageways, groping our way in the darkness. Built around 1915, it again is one of Hollycombe's superlatives: the oldest ghost house in the world.

Hollycombe is staffed mainly by volunteers. Simon tells us that there is a core group of around 30 but more are always needed. Training is given to people who would like to learn to run the fairground rides; other qualities needed are a desire to learn as well as patience and a willingness to work with the public. People with specific skills such as painting and carpentry/joinery are welcome, as are gardeners.

One such volunteer who obviously enjoys dealing with the public is Kevin. Decked out in a snazzy striped blazer, he stands outside the Bioscope Theatre, and like the traditional circus barker, exhorts passersby to come in and enjoy a vintage silent film. On 29th April, it was a classic Laurel and Hardy, probably from the 1920s. We took our seats inside and within minutes, the little auditorium began to fill up. Kevin gave us a brief history of the bioscope and its importance in the history of the cinema, and provided information about Laurel and Hardy's comedy. Then, to our surprise, he sat down at the piano and provided a rousing accompaniment to the silent film being screened. We all applauded at the end.

Hollycombe owes its existence to Commander John Baldock who owned the land on which the Steam Museum is situated. Seeing that the Age of Steam was coming to an end, the Commander started to collect the wonderful machines and rides that we see today. His son, David, is a trustee, thus continuing his family's involvement in Hollycombe. More about Hollycombe's history is on the website.

WORKING STEAM, RIGHT HERE IN LIPHOOK

The Country Museum



As most of the iconic rides are made of wood, preservation is of prime importance. Constant maintenance is required to keep everything in good condition. In addition, there is always machinery being renovated. A project currently in progress is the rebuilding of a World War I saw-mill – the engine dating back to 1915.

Steam and its uses are in evidence everywhere – our tour took us to the farm, the water wheel, the forge. Much to see and enjoy.

The big surprise for me was the extensive garden – Grade II* listed – which seems to be Hollycombe's best kept secret – one which Simon wants to share with everyone. Although the end of April was well past the daffodil season, we could see where swathes of them had been, and in full flower, they must have been breathtaking. There are also beautiful mature trees – in particular, many varieties of acer. We were too early to enjoy the azalea walk but maybe next year . . . On the grounds there is also a huge ice house which must have been a real asset to the Baldock family.



Simon is keen to use the garden – as well as the Museum itself – as a venue for different events. The day before my visit, a wedding was held there. (See photos!) Other weddings are scheduled this year as well as birthday parties, anniversaries, school trips, organisational trips (e.g. U3A). You can contact Simon by telephone or email for further details (see below).

Hollycombe has a large café where you can enjoy hot or cold foods cooked by members of the Hooker family. In addition to running the café, they are responsible for taking Hollycombe 'out into the community' – for events such as Liphook Junior School's Fun Day.



Hollycombe Steam Museum is open Sundays and Bank Holidays from now until 14th October. It is also open daily during half term, 30th May to 3rd June, and from 31st July to 27th August (closed Mondays except for the Bank Holiday). Gates open at 11, rides from 12.30 to 17.00. The cost is £16 for adults, £14 for seniors and £12 for children. A family ticket is £50 (2 adults, 2 children). Your ticket for entry is good for a calendar year (which enables Hollycombe to qualify for Gift Aid, very important) – so you can return and return and enjoy and enjoy. Disabled visitors are welcome at the normal admission price; one carer is admitted free on proof of bona fide registration. Well behaved dogs are also allowed as long as they are leads and their owners clean up after them!



You can find Hollycombe on Facebook and Instagram. The website, as listed above, is www.hollycombe.co.uk. Telephone: 01428 72400. Email: info@hollycombe.co.uk. Address: Iron Hill, Liphook, Hants. GU30 7LP.

Mari Wallace

A Welcome Splash a

Bramshott, Liphook & District Horticultural Society recently held their first show this year in the Church Centre, Liphook. The Show Secretaries were delighted with the outstanding number and quality of entries displayed by the members. Once again the Committee were very pleased to see entries from new members, several being placed in some classes.

All the daffodil classes were very well supported demonstrating the variety and colour of daffodils now available. Other classes with good entries included the spring flower class, the camellia class, and the single variety shrub class.

Vice President Peter Catt came up trumps with his high quality entries winning the Ted Baker Cup for best in show for his three trumpet daffodils, and the Tony West Salver for his nine mixed daffodils. The winner of the photographic class this year was

Helen Brown for her amazing photo of a butterfly for the class entitled Nature up Close.

Following the win by the Society recently of a cheque from the Skipton Building Society, Chairman Lesley Hollands announced that a further prize was being offered to those winners who submit a photograph demonstrating how that money has been spent. Therefore Lesley rallied the members and visitors round for a group photo to publicise how successful the Society is.

The next Show is on Saturday 21st July in the Church Centre, Liphook. For further information about the Society, please ring Helen Brown on **01428 722875** or refer to the Society's new website at www.liphookhortsoc.org.uk

Anne Govier



Group shot of everyone and the exhibits.



Daffodils.



Daffodils.



Spring Flowers.



General.



Lesley Hollands and Caroline Jones.

of Colour in Liphook



Ann Haussauer's winning Amaryllis.



General.



Peter Catt receiving the Tony West Salver from Susan Lowe.



Helen Brown with her prize for the winning photographic entry.

RESULTS

1. **Specimen Daffodil** : 1st Ann Haussauer, 2nd Sally White, 3rd Peter Catt
 2. **Trumpet Daffodils** : 1st Peter Catt, 2nd Ann Haussauer, 3rd Heather Bicknell
 3. **Trumpet Daffodils, white or bicolour** : 1st Peter Catt, 2nd Marie-Clare Keyser, 3rd Ann Haussauer
 4. **Large Cup Daffodils** : 1st Peter Catt, 2nd Cynthia Dawes, 3rd S.G. Gilmour
 5. **Small Cup Daffodils** : 1st Ann Haussauer, 2nd Peter Catt, 3rd Brian Simmons
 6. **Multiheaded Daffodils** : 1st Peter Catt, 2nd Ann Haussauer, 3rd Marie-Clare Keyser
 7. **Double Daffodils** : 1st Peter Catt, 2nd Ann Haussauer, 3rd Heather Bicknell
 8. **Miniature Daffodils** : 1st Nicky Cokerton, 2nd Ann Haussauer, 3rd Richard Jones
 9. **Mixed Daffodils** : 1st Peter Catt, 2nd Ann Haussauer, 3rd Margaret Ilsley
 10. **Mixed Miniature Daffodils** : 1st Anne Govier, 2nd Nicky Cokerton, 3rd Ann Haussauer
 11. **Daffodils grown in a container** : 1st Anne Govier, 2nd Peter Catt, 3rd Ann Haussauer
 12. **Daffodils Grown from Autumn Show Bulbs** : 1st Richard Jones, 2nd Sally White, 3rd Lesley Hollands
 13. **Tulips One Variety** : 1st Heather Bicknell, 2nd Peter Catt
 14. **Mixed Tulips** : 1st Ann Haussauer
 15. **Tulips Growing in a Container** : 1st Margaret Ilsley, 2nd Ann Haussauer
 16. **Any Other Bulbs in a Container** : 1st Ann Haussauer, 2nd Susan Lowe, 3rd Peter Catt
 17. **Polyanthus** : 1st Heather Bicknell, 2nd Anne Govier, 3rd Sally White
 18. **Primula** : 1st Richard Jones, 2nd Robert Ilsley, 3rd Lesley Hollands
 19. **Pansies or Violas** : 1st Peter Catt, 2nd Ann Haussauer, 3rd Robert Ilsley
 20. **Spring Flowers** : 1st Anne Govier, 2nd Peter Catt, 3rd Marie-Clare Keyser
 21. **Flowering Pot Plant** : 1st Milly Withers, 2nd Clare Singleton, 3rd Cynthia Dawes
 22. **Foliage Pot Plant** : 1st Suzanne Moss, 2nd Caroline Jones, 3rd Helen Brown
 23. **Camelia** : 1st Sally White, 2nd Peter Catt, 3rd Ann Haussauer
 24. **Flowering Shrubs - One Variety** : 1st Susan Lowe, 2nd Barbara Bell, 3rd Peter Catt
 25. **Flowering Shrubs - Mixed** : 1st Peter Catt, 2nd Anne Govier, 3rd Dr J Shaw
 26. **Spring Garden Flowers** : 1st Clare Singleton, 2nd Peter Catt, 3rd Sally White
 27. **Photograph - "Nature Up Close"** : 1st Helen Brown, 2nd Suzanne Moss, 3rd Dr J Shaw
 28. **Rhubarb** : 1st Brian Simmons, 2nd Miranda Rowe, 3rd Sally White
- Highly Commended** : Rosemary Herbert Class 21
- Best in Daffodil Classes 2 - 10** : Peter Catt, Class 4
- Best in Show** : Peter Catt, Class 9

BRAMSHOTT AND LIPHOOK PARISH COUNCIL

Summer 2018

Annual Community Meeting

We were delighted to see so many residents at our Annual Community Meeting held at the end of March and very much enjoyed speaking to so many of you. The evening kicked off with a great performance by our Liphook based Love to Sing choir who regaled us with some great songs whilst guests enjoyed wine and nibbles. We then welcomed speakers from various local organisations including the Carnival committee, Homestart, the Preservation Society, the Peak Centre Trust, Mum and Me Netball, Voluntary Care and the Community Magazine. We also heard about how Liphook could become a Dementia Friendly Society and more details will be available about this initiative shortly.

One of the messages from the evenings was that many of our local organisations are in desperate need of volunteers and if you are able to spare an hour or two a week then please drop in to the Parish Office and leave your details and we can put you in touch. Alternatively drop an email to:

council@bramshottandliphook-pc.gov.uk

We know that Liphook Voluntary Care are particularly in need of drivers to help transport people to various appointments and you can do as little or as much as you would like.

All in all, the Annual Community Meeting was a great celebration of our community and we are already making plans for next year and would welcome your thoughts on what you would like to see at this annual event. Please do get in touch.

Litter Pick

Our joint Litter Pick with our friends at Liphook in Bloom took place in March and we were joined by about 40 volunteers and many, many bags of rubbish were collected. If you would like to join in next time then we'd love to have you along and we will advertise any future events here and on our Facebook page.

Open Spaces

Now that Summer is here grass cutting on our public open spaces has started and we hope that you will enjoy the peace and tranquillity that these areas offer, particularly in our beautiful Radford Park. We are hoping to restart working parties for this particular area and if you are keen to volunteer your services every so often please get in touch. You may also notice that we are carrying out a lot of tree work at the present time following a recent survey of all council owned trees in our parish.

Neighbourhood Development Plan

Our very hard working steering group have completed the first phase of the project and the Interim Report is now available on the NDP website:

www.bramshottandliphookndp.uk

This details the findings of the community engagement events held last year and the work that now needs to be carried out to start developing policies.

The steering group now need lots of volunteers to form working parties to carry out some of the tasks and they are particularly keen to hear from you if you can offer some time. You don't need to have any particular skills or expertise (although experience is always very welcome) and you only need to commit for a short

period of time. The themes that the group are focusing on cover subjects such as community, access & movement heritage & design, housing, sports & recreation and others. If you think you can contribute then please get in touch at:

admin@bramshottandliphookndp.uk

We really want this plan to be community led so the more people that get involved the better it will be.

Parish Council Meetings

The Parish Council are always keen to see members of the public at our meetings. A full meeting schedule can be found on our website at:

www.bramshottandliphook-pc.gov.uk

You can also follow us on Facebook:

[@bramshottliphookpc](https://www.facebook.com/@bramshottliphookpc)

Telephone: 01428 722988

Email: council@bramshottandliphook-pc.gov.uk

If you wish to contact me about any business related to the Parish Council I would be delighted to hear from you.

*Cllr. Jane Ives - Chair
Bramshott & Liphook Parish Council
Telephone: 01428 722324/07736 682182*

BRAMSHOTT OPEN GARDENS

The magic is nearly here!

Hampshire is full of beautiful villages and Bramshott is no exception, renowned for spectacular houses, glorious gardens, WWI Canadian camps, sunken lanes and . . . erm ghosts!

Come and see for yourself and get to know Liphook's nearest neighbour a little better on 9, 10 June when the bi-annual weekend of open gardens takes place.

There's a wide variety of gardens, some with immaculate lawns and borders to completely wild, and classic English country gardens full of charm and imagination. Start early, doors open 11am - until 5pm, buy your ticket from the triangle opposite St Mary's, £7.50 for the whole weekend, children under 12 are free. There are regular tea stops, and in particular the lawns of St Mary's become transformed into an Afternoon Tea paradise, as well as the beautiful flower festival inside the church. The art barn is back at Covars Farm, featuring work of local artists including Kate Greenbank who is unveiling a range of watercolour and ink pictures of Bramshott. It's a wonderful day out and if you miss it, you've missed the best of summer.

<http://www.bramshottopengardens.org.uk>

Liphook in Bloom

What a winter! Spring seemed a long time coming. When the Liphook in Bloom team had their first meeting of the year in February the weather was cold, damp and dismal. The flowerbeds were covered in leaves and the only things that seemed to be growing were the weeds! However, our helpers turned out in force on the first working day of the year and soon the beds were tidied ready for the first signs of spring. We were especially anxious about the crocus, which were later flowering this year, but before long there was a beautiful display of purple crocus in the Millennium bed. These had been donated by Haslemere Rotary Club as part of their Purple 4 Polio Campaign and the team were most anxious to support this worthy cause.



Fletchers Field.



The Square.

Fortunately 'The Beast from the East' had been and gone when Liphook in Bloom joined forces with the Parish Council for the annual Litter Pick. Volunteers from Liphook Scouts, Girlguiding Liphook, the Peak Centre and LiDBA, along with other members of the public turned up to help. Litter pick-sticks, high-vis jackets and heavy duty bags were issued and the volunteers dispersed in groups throughout the Parish. It became increasingly apparent throughout the morning that the majority of litter seems to be generated by our addiction to fast food, take away coffee and drinks in cans and plastic bottles. Past generations did not have this problem; progress and innovation seem to be costing the planet an awful price.

As bags were filled, James Green from Liphook Tree Surgeons



Litter Pick.

drove round in his truck collecting them together with any glass and miscellaneous items. He took them back to Midhurst Road car park where a mountain of rubbish bags was forming, to be collected by EHDC the following day. In all about 8 cu. metres of rubbish was collected, the largest items including 2 car seats and 2 large tyres!



Millennium Bed.

No doubt there will be another Litter Pick next year, but if only people could take their rubbish home and put it in the bin there would be no need. However, we could all keep an eye on our own patch: when you put out your wheelie bin, just cast an eye up and down the road and pick up any rubbish and put it in a bin.



Purple 4Polio.

As soon as the weather began to improve the bulbs started blooming and what a show! The daffodils in The Square certainly cheered everyone up passing through, not to mention the stunning tulips and pansies in other beds throughout the village. Liphook in Bloom have been gratified by the lovely comments posted on their Facebook page.

By the time this magazine has been delivered to you the summer beds will have been planted. The Liphook in Bloom team have some lovely plans - watch the beds and containers this summer and let us know what you think. Better still come and help look after them. If you would like to know more about our activities have a look at our website www.liphookinbloom.co.uk or give Joan Holdsworth a call on 01428 724016.

Barbara Miller

LIPHOOK TRAVEL

Worldchoice

11 Headley Road
Liphook
Hampshire
GU30 7NS



*Independent Family Business
Established over 40 years
Contact us for all your travel needs*

Travel Professionals

A competitive price - with excellent advice

Tel: 01428 723525

email: info@liphooktravel.co.uk

www.liphooktravel.co.uk



CR11BBB

3A High Street
Headley
Bordon
Hampshire GU35 8PP

For Airport
Connections and
Business Travel

Contact: Paul Cribb
Bookings: 01428 717 896
Enquiries: 07777 673 953
Email: cr11bbb@btinternet.com

THIS IS THE WAY FORWARD

Look after your family's smile with Oak Lodge Dental

Exceptional dentistry in the heart of Liphook



01428 723179
smile@oaklodgedental.co.uk
oaklodgedental.co.uk



Index House | Midhurst Road | Liphook | GU30 7TN

Our friendly and approachable solicitors can help you with:-

- Residential Property • Wills • Probate
- Trusts • Powers of Attorney
- Divorce & Separation • Children & Finance
- Family Mediation • Crime & Road Traffic
- Disputes & Disagreements

We can provide help on a wide range of legal services.
Please see our website for full details:
www.burley-geach.co.uk

Alternatively please call for more information or to
arrange an appointment:
01428 722334

**We stand by
our reputation**

Offices also in Grayshott (01428 605355) Haslemere (01428 656011)
& Petersfield (01730 262401)



Gift & Coffee House

FOR THAT LITTLE SOMETHING

Tel: 01428 723 710

1 The Square, Liphook

*Unique Gifts for all Occasions,
Greetings Cards and Wrapping Papers.*

Join us for ready to go breakfast rolls, Panini's, ciabatta's, focaccia's and more. Amazing homemade cakes including Gluten Free options, fresh Columbian Coffee, organic Teas and delicious hot chocolates as well as a selection of cold refreshing 'Posh Pop' drinks.

NOW STOCKING DYLAN'S ICECREAM!

9:00am - 4:00pm Mon. to Fri., 9:30am - 2:30pm Sat. (Sun. closed).

Facebook: L&S Gift & Coffee House LTD

www.lsgiftandcoffee.co.uk

Liphook Carnival

We kicked off this year with our AGM in February, a very good turnout by local residents and those very worthy recipients who received donations from the proceeds of last years Carnival.

They include Hampshire Search and Rescue, Hants & IOW Air Ambulance, The Peake Centre, Liphook Fire Service, The Girl Guides, The Scouts, The British Legion, Bramshott & Liphook Village Hall, Liphook Laundry, Liphook over 60's Club, The Methodist Church, The MAD Company, Little Cherubs Nursery and Liphook Football Club. All deserving groups and charities within Liphook and the local area.

We also welcomed new members to our Committee, Lucy Farnell taking over from Alison Dibben-Harris as our new Treasurer. Charlotte Lawrence taking over from Jill Howie as our new Secretary and other new members including Marc Brystead, Joy Akers, Mandy Ellis and Jason Manson.

We are now in the throes of fundraising for this years Carnival. **We plan to kick off this years fundraising on Saturday 7th July with a family fun day at the Church Centre** which will include many family activities including a bouncy castle, face painting, games, stalls and bbq. There will also be an opportunity for anyone interested in joining the Carnival Procession this year to come along and chat to some of our more long standing members for a bit of help and advice. We will also be selecting our Carnival Prince or Princess at The Family Fun Day and plan to open up this event to all Schools in the local area. Application forms will be available soon.

We will continue with our very popular **Quiz Night on 22nd September**, catering for approximately one hundred guests. I think the sausage, mash and onion gravy from last years event will be hard to beat! We will hold our raffle with prizes generously donated by local businesses and will offer a super prize for the winning team.

Also in August or September we will hold our Carnival Walk in and around Liphook. We look forward to all our regular walkers who join us come rain, hail or shine, but hope to increase the turnout this year as it is such a truly fantastic event for all the family and not forgetting the dogs of course.

The Carnival this year will be held on Saturday 27th October and we hope to beat last years float turnout of thirteen, so anyone who needs any help or advice please feel free to either turn up at our family fun day or get in touch with me.

To start off our fundraising this year we were very pleased to accept a cheque from The Liphook Bowls Club. Their very generous donation will certainly make a difference to the running costs associated with The Liphook Carnival. I was very warmly welcomed by the Bowls Club and very impressed with the condition of the green and the superb Clubhouse. In the sun everything looked rather smart and no doubt keeps the club members busy maintaining such high standards. Thank you to all the members for the wonderful donation and warm welcome. Good luck with your bowls competitions this year!

Possible future events for next year will include hosting a large family fun day on the green and definitely bringing back the ever popular dinner dances, any ideas will be welcomed and considered.

We are looking to grow the Carnival and any support or ideas are gratefully received. Please feel free to get in touch with either myself on: **07717 313440** or any of the Carnival Committee. Can I ask anyone who has access to Facebook, please like us as this is a great way of keeping the local community informed. Our website address: **www.liphookcarnival.org.uk**

Thank you for your time, any queries please ask. Contact details listed under Clubs and Organisations.

Sally Cameron - Liphook Carnival and Bonfire Committee

NEIGHBOURHOOD DEVELOPMENT PLAN

Interim Report is Out!

The Bramshott and Liphook Neighbourhood Development Plan (NDP) is excited to announce the publication of an interim report by our independent consultants Fera Urbanism. Following a series of successful community engagement events last year in June and November, the interim report sets out the key themes and areas of interest for the next stage of the NDP.

Neighbourhood planning was introduced in 2012 by the Localism Act 2011 and is a community-led planning framework where local communities can produce neighbourhood plans for their local areas, putting in place a community led and shared vision for the future development of the area. Following a referendum, our Neighbourhood Development Plan will form part of the statutory planning policies for the area, providing our community with a cohesive plan and policies that reflect the desires and requirements of the community for the future of our Parish.

Following on from the community events last year the interim report contains a summary of the community engagement and data gathering process to date, and more importantly, recommendations for the structure and approach to development of the key policy themes that could form the basis of the plan.

The full interim report can be found on the NDP website and highlights 7 areas or themes of interests, which the NDP will now focus on. These are, in no particular order: Communities, Housing, Access & Movement, Public Services, Sports & Recreation and Heritage & Design and Employment. The NDP has now formed 7 working parties to look into these themes and conduct some research, evidence gathering and further community engagement.

The NDP Steering Group is keen to have more people involved in the working parties. So, if you have a passion for or interest in traffic, cycle paths, housing, employment opportunities, diversity of facilities, bringing out the historic Liphook, recreational facilities and sport facilities etc., please get in touch with NDP Steering Group on the details below. If you want to be kept up to date on the NDP progress and future events go to:

- the BLNDP webpage : www.bramshottandliphookndp.uk;
- Facebook : @BramshottandLiphookNDP; or
- the NDP notice board in the Liphook Millennium Centre.



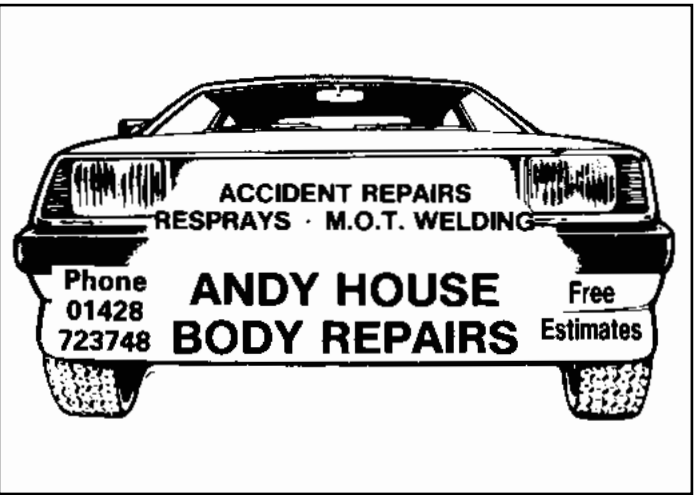
C.J. Sheppard

Building Services

- Extensions
- Alterations
- Renovations
- Roofing
- Carpentry
- Qualified Plumber
- Kitchen and Bathroom Fitting
- Tiling
- Painting & Decorating

*References available
Please call for a free no obligation estimate*

Tel: 07968 452126 / 01420 478383
Email: cjsheppard79@btinternet.com
79 Liphook Road, Lindford, Hants, GU35 0PG



CHIROPODY

AT
"MARIONS"
THE SQUARE, LIPHOOK

CALL:
FIONA WEBBER
01730 710461
FOR APPOINTMENTS

A&D SWIMMING POOLS LTD



- New Builds
- Renovations
- Landscapes
- Maintenance

T: 01428 724345
M: 07738 935272
www.adpools.co.uk



Established in 2001, we are a local firm of independent financial advisers.

We cover all aspects of financial planning including:

- Bespoke Financial Planning
- Investments**
- Pensions
- Mortgages*
- Life Insurance
- Estate Planning

CONTACT DETAILS

0330 330 0013

admin@mapfinancial.co.uk

2a Midhurst Road, Liphook, Hampshire, GU30 7ED

Regulated by the Financial Conduct Authority – Ref: 301531

** Please be aware your home may be repossessed if you do not keep up the repayments on your mortgage.*

*** Investments rise and fall in value and you may get back less than you invested.*

FREE INITIAL CONSULTATION

News from The Ark Pre-School

It is hard to believe that we will soon be in to our third term at The Ark and it has been a very happy and successful start to our new village pre school. We have welcomed many new children over the year and it has been delightful to get to know them and their families and to watch them grow and learn. Some of our children will be graduating to Year R in September and whilst we will be sad to see them go as we know them so well now, we are confident that they have had the very best start to their education.

We have reflected on what makes the Ark such a special place for our pre school children:

- the friendly staff, always available before or after school to share the day's news.
- the well planned EYFS curriculum, planned by experienced teachers who have worked in local schools, which reflects each child's interests and abilities.
- the exceptional indoor environment that has been designed by early years specialists.
- the use of various halls within the church centre for weekly drama, music and PE, delivered by trained teachers
- the special needs programme that identifies and gives support early so all children and parents will feel confident as infant school approaches
- or maybe it's the outdoor environment - our purpose built playground, the new 'living' willow walkway, the field and local country paths we use for nature studies or the regular trips we plan to the library and recreation ground.

Although we may feel all these points contribute to making our pre school an excellent early years experience for every child we feel that our children's comments say more.

Here are a few comments from some of our parents and carers:

"Billy is always asking if he is going to school today and he has many new friends. We are really pleased with the progress he is making and we enjoy logging on to 'Tapestry' at home and reading all about his activities".

"The Ark encourages the children to learn joyfully".

"Our daughter loves coming. She particularly enjoys riding the bikes and the messy play activities".

Here are some photos of a few memorable moments at school!



Would you like to find out more?

Please look on our Facebook page or phone us to arrange a visit.

The Church centre office: Tel. 01428 725390

Weekdays, 9.00 -4.00pm: Tel. 0777 539 4230

www.thearkliphook.co.uk

Alison Jackson

The Ark in Liphook is the village's new nursery which is a charitable foundation in partnership with Bramshott and Liphook churches. The Ark pre-school is based at The Church Centre, Portsmouth Road, Liphook, GU30 7DJ.

CHURCHER'S COLLEGE
NURSERY • JUNIOR • SENIOR • SIXTH FORM

Limitless Potential

Connect: /Churchers1722 churcherscollege.com

Come and see for yourself - 'School in Action' events throughout the year
Contact admissions@churcherscollege.com or 01730 263033

Genesis

AUTOMOTIVE

The Total Motoring Solution

- Servicing and repairs to all makes of vehicle
- MOT Testing Centre
- Electronic Diagnostics
- Exhaust and battery centre
- Unbeatable prices on all makes of tyres
- Full air-conditioning service available

CALL NOW ON

01428 727117

Unit A1, Beaver Industrial Estate
Midhurst Road, Liphook GU30 7EU

RMI

UNIVERSITY OF THE THIRD AGE

Liphook U3A Open Day

MONDAY, 12TH MARCH 2018

The annual event is held to promote the Liphook branch of this nationwide organisation. Nearly all the forty plus groups, ranging from Antiques and Collectables, Flower Arranging, History, Languages, outdoor activities like Boules, Croquet and Walking, along with Trips out to places of interest and Theatre Visits plus many more besides, were represented this year.



The doors opened at 2.00p.m. and from then until 4.00p.m. there was a steady stream of people visiting these various groups to learn more about how they operate and exactly what they get up to. Many were existing members of the Liphook branch, but there were also visitors attending to find out just what U3A is all about, several of whom, we are pleased to say, liked what they saw and decided that they must have some of the fun and signed up to join straight away!



There were free refreshments on offer in the Canada Room, tea, coffee and homemade cakes, which proved every popular, with John Horner and his helpers rushed off their feet.



As usual, it was a successful afternoon with many members adding membership of a new group or two to keep them active in the coming year.



Liphook U3A have their monthly meetings at 2 p.m. on the first Monday of the month (except July and August and if the 1st is a Bank Holiday it is delayed to the 2nd). These take place in the Millennium Hall when we have a variety of very interesting speakers followed by tea/coffee and biscuits.

The various interest groups meet in a variety of venues.

Further information can be viewed on the website www.liphooku3a.org.uk or telephone the Chairman, Paul Reynolds, on 01420 768385.

Mike Andrews
Publicity1@liphooku3a.org.uk
Telephone: 01730 89327

Churcher's College

CHURCHER'S NURSERY SCHOOL FIRST ANNIVERSARY

Churcher's College Nursery celebrates its first anniversary! It is one year since the brand new Nursery opened its doors and welcomed in its first children. To celebrate the occasion an apple tree was planted in the front garden by Simon Williams and Ffion Robinson, Headmaster and Head of the Junior School respectively.

Annabel Knowles, Head of Churcher's College Nursery, said: *"The apple tree will symbolically flourish and grow alongside us as we move forwards! The first year has flown by with some wonderful landmarks along the way including our first Pussycats progressing into Owls, and in turn the first Owls moving into Reception in the Junior School. We've also had a wonderful launch celebration in the summer, many lovely visitors coming to play in Little Skippers as well as campfires, bear hunts, music lessons, fairy hunting and so much more learning through play!"*

YEAR 4 STAR IN PORRIDGE

Churcher's College Junior School Year Four performed their play 'Porridge', a musical drama based on characters from nursery rhymes and fairy tales.

This created a new genre of entertainment: "Nursery Noir", mixing up popular stories with the World of Organised Crime! The children loved performing it and it was wonderful to see so much support from friends and family on the night. Judging by the laughter at the abundant jokes, hilarious one-liners and the amazing acting, singing and dancing the evening can be described as an unprecedented success.

Thanks must go to those who helped create the nursery world with costumes, scenery and direction, in particular Mrs Philippa Yugin-Power for her help with the back drop and Mrs Robyn Fairlie, Mrs Sarah Roberts, Tilly Fairlie and Hannah Moore for their help backstage. A special thanks to Mr Chris Pellett for the fantastic lighting and sound effects.

Year 4 class teachers Mrs Sarah Jane Moore and Mrs Kayleigh Pendry said *"It was the children of Year Four, working as a team, that made the characters and story come to life . . . WELL DONE to you all!"*



CHURCHER'S COLLEGE 'SCIENCE GOPHERS' WELCOME SHEET PRIMARY SCHOOL STUDENTS

On Friday 23 March Churcher's College 1st year (year 7) 'Science Gophers' hosted Sheet Primary School students for an afternoon of science experiments and learning together. The Churcher's science club students managed small groups of Year 5 and 6 Sheet Primary pupils to conduct some exciting and fun experiments including: Bubble Lab, Slime, Cool Sherbet, Walking Rainbow, and Density Detectives.

Mrs Julie Robinson, Headmistress of Sheet Primary School, joined the pupils and said: *"The children had a fabulous afternoon and really enjoyed the experiments - they were buzzing about what they had been doing!"*



YEAR 6 CHURCHER'S PUPILS ENJOY FRENCH TRIP

Year 6 pupils had a fantastic time on the school's annual residential trip to France.

The trip started well with our journey being trouble free and shortly after arriving in France we visited the Nausicaa aquarium, which has some fascinating marine creatures and some entertaining sea lions!

The next stop was the visit to the primary school that we have been in contact with, where the French children practised their English and Year 6 practised their French skills. After, we left and went to the war cemetery at Etaples and the children spent a reflective hour looking at the gravestones and the books of remembrance. The final activity after supper involved playing lotto.

Our final adventure was to go sand sailing. Despite there not being a lot of wind, the children had fun in the buggies, with some children going around cones and others knocking them over!

French Teacher Mrs Sophie Penfold said: *"By the look on their smiling faces, Year 6 will add the trip to France to their bank of happy memories from CCJS."*



Spike Milligan and Me

If Spike (born Terence Alan Milligan) were still alive (he died in 2002), he'd have been 100 years old this past April.

Roll back the years to 1975. I'd been living in the U.K., having moved here from New York, for less than a year when a friend invited me to join him to see Spike Milligan's one-man show at the Mermaid Theatre in London. Throughout the evening, I couldn't understand why the audience was laughing so much as Spike's humour went completely over my head. Still in a state of bewilderment, I accompanied my friend backstage who wanted to say hello to one of the crew. There I spotted Spike, all alone, plunking out 'The Girl from Ipanema' on a guitar. Naturally, I started to sing along. "Oh, you like jazz," he said, suddenly noticing me. "Maybe we could go out some time."

That's how it started - my friendship with Spike which lasted, on-and-off, for the next five years. I think he liked me for two reasons. Unlike his friend Peter Sellers (whom Spike always referred to only by his surname, Sellers), Spike wasn't known in the U.S. So my being an American had novelty value. Another was my surname: Zipes. My father's family came from Ukraine - hence Zipes - a name and sound which Spike readily latched onto. "It's got to have an exclamation mark at the end," he insisted. I don't think he ever called me Mari. It was always Zipes.

I became Spike's periodic dinner companion, often going to the Kensington restaurant he particularly favoured, The Trattoo. The first time we dined there it was with his co-writer for the TV series, 'Q8', currently in progress. Spike, a vegetarian, ordered a pasta dish while his friend had steak tartare. The irony of these two contrasting meal choices was not lost on me. On another occasion, also at the Trattoo, a couple of giggling teenage girls charged over to Spike, asking for his autograph. No one had any paper so Spike obliged by signing his name in pen on their forearms. Nowadays they'd probably convert his signature into a tattoo - a tattoo from the Trattoo!

Spike was, of course, renowned for saying whatever he thought, despite repercussions. He got into a bit of trouble by referring to Prince Charles, a big Goons fan, as a 'little grovelling bastard'. Although Spike was always nice to me, he did not mince his words. One evening, as I preceded Spike to our restaurant table, he got a good view of me from behind. "Zipes," he said with a chuckle, "I think you'd better lay off the bread."

We didn't always dine alone. Spike was good at bringing along people I might like to meet. One was Eric McGraw who headed a charity that Spike was involved with. Since then, Eric and I have remained friends - more than forty years. Eric was awarded an MBC in last year's Queen's Honours List - something Spike would have been pleased to know - for services to the rehabilitation of prisoners in England and Wales.

As is well documented, Spike was prone to periods of depression. Spike had invited fellow actor Graham Stark, a regular in the 'Pink Panther' films among others, to join us for dinner, the link being that I worked in publishing as a picture researcher and Graham was a keen amateur photographer. Spike had been in a strange mood all evening and suddenly stood up and announced that he was going to leave. Graham, who was more used to Spike's erratic behaviour than I was, said, 'Don't worry, Mari. I'll

take you home.' When I saw Spike again, he was back to 'normal'.

Because of my friendship with Spike, I read all of his novels and poetry, which I enjoyed. But when I tried to plough through his Goon Show scripts, I could not fathom why people thought they were so funny. I concluded that it must have been the voices of the characters and the sound effects that made the broadcasts so memorable to the dedicated listeners.

I actually 'appeared' in one of Spike's books. Norma Farnes, Spike's long-suffering manager, published 'The Spike Milligan Letters'. She included in it the letter Spike sent on my behalf to the then Home Secretary, Roy Jenkins, concerning my work permit application. Although Norma got the background information wrong, the letter is in the book - thus my five minutes of fame!

My dinners with Spike dwindled as I got more and more involved with the new man in my life whom I ultimately married. When we had our first child I sent out birth announcements, and decided to send one to Spike. His reply was typical. "Congratulations," it read. "Is it one of ours?" He signed it with his usual closing, "Love, Light and Peace".

I only saw Spike once more - when he was doing a show at the University of Brighton and kindly gave me tickets. Spike continued to be a controversial figure, even after death. He wanted his headstone inscription to be: "I told you I was ill" but the powers-that-be of St. Thomas's Church, Winchelsea, did not think it befitted the tone of their cemetery. Not to be outdone by ecclesiastic bureaucracy, Spike was determined to have the last word. And he did. In Irish. Dúirt me leat go raibh me breoite, it says. Translation: "I told you I was ill."

So, happy 100th birthday, Spike. Love, light and peace.

Mari Zipes Wallace

Smiling Is Infectious

Spike Milligan

Smiling is infectious,
you catch it like the flu,
When someone smiled at me today,
I started smiling too.

I passed around the corner
and someone saw my grin.
When he smiled I realized
I'd passed it on to him.

I thought about that smile,
then I realized its worth.
A single smile, just like mine
could travel round the earth.

So, if you feel a smile begin,
don't leave it undetected.
Let's start an epidemic quick,
and get the world infected!

**COUCHMAN
HANSON
SOLICITORS**

We are experienced local solicitors offering straightforward, practical advice.

We cover a wide geographic area and offer out of hours appointments and home visits at no extra cost.

Employment – Employer and Employee | Wills | Lasting Powers of Attorney | Trusts | Probate | Civil Litigation | Advocacy | Company & Commercial | Debt Recovery

Tel: 01428 722189

Web: www.couchmanhanson.co.uk
Email: enquiries@couchmanhanson.co.uk
Chittlee Manor, Haslemere Road,
Liphook GU30 7AZ



Yoga & Pilates



Mixed Ability Pilates Class
Monday Morning - Liphook
9.15am-10.15am

Mixed Ability Yoga Class
Tuesday Morning - Liphook
9.15am-10.45am

Mixed Ability Pilates Class
Wednesday Evening - Milland
6.15pm – 7.15pm

Mixed Ability Pilates Class
Friday Morning – Liphook
10.45am – 11.45am

*** BEGINNERS WELCOME ***
Contact Zannah M. Charman
on

07710 328844

or Email:

zannah.charman@hotmail.co.uk



Zannah Marea Charman

SK Electrical & Security Systems Ltd

- Electrical installation, test & inspection
- Security system installation
- Heating/Ventilation



For an electrical contractor with over 30 years experience, call us on:

01428 725536

info@skelect.co.uk

www.skelect.co.uk

WE HAVE MOVED TO:

Units 8/9, Beaver Industrial Estate, Midhurst Rd, Liphook GU30 7EU



NOW OFFERING Our new Mobile Vet Service!

All aspects of routine and preventative health care in the comfort of your pets own home

- Vaccinations • Claw clipping • Blood sampling
- Prescription checks • Blood pressure monitoring
- Acupuncture • End of life care

Bringing experienced, compassionate and professional veterinary care to your home.

To book please telephone – **01730 266431**

or ask at reception for more details

Fully supported by our RCVS approved well equipped veterinary surgery in Petersfield
24 hour emergency cover provided at our Petersfield surgery



www.stpetersvets.co.uk
contactus@stpetersvets.co.uk



B.L.A.C.S.

Bramshott and Liphook Art Society is going from strength to strength, with 125 members, all local artists and craft artisans. They contributed to another successful Exhibition at the Millennium Centre in Liphook last month. The exhibition was over three days and many visitors commented on the extremely high standard of work on show and the beautiful way in which it was all displayed. We had 752 visitors over the three days, with 230 pieces of framed art on show and 42 craft / 3D items. Six new members joined the Society at the exhibition where we had a dedicated membership desk for enquiries. Gift cards were on sale in the foyer and the Gift Shop in the Canada Room received lots of favourable comments on the standard of the jewellery and craft items. The Café was a great success serving panini's with delicious fillings, sandwiches and home-made cakes. The guest art group was Caroline Strong's, a local artist who has a range of workshops locally, and her students provided a stunning display. Next year we will be looking to support another local class so if you run an art class and would be interested please contact us. During the exhibition, artists provided demonstrations which attracted a lot of attention and interest, and included a sculptor.

We would like to give a big thank you to all those who made our exhibition such a success, including, our artists, visitors, advertisers in our exhibition catalogue and volunteers. Lastly we would like to thank everyone who came to see the exhibition and we hope everyone enjoyed it as much as we did.

The 2018 award winners were:

Craft Committee choice

Peta Devine - Sea Gems (223)

Elichem Award for Innovation

John Winchester - Whale Sculpture (231)

Art Committee choice

Lindsay Sword - Twilight Mapua (158)

new award for Landscape from Mrs Bywood in memory of Paul Bywood
Maria Ellis - Vibrant Tulips (58)

Public Choice for Pictures

Caroline Strong - "Catch of the Day"

Public Choice for Craft

**Julia Whittaker - "Leather Weight"
painted feather mounted on stone base**

New award for Landscape from Mrs Bywood in memory of Paul Bywood

Our ongoing programme of demonstrations and workshops has been interesting and varied, from drawing and capturing movement to portraiture. All are welcome at our demonstrations which are held at the Millennium Centre, Liphook, on the first Tuesday of the month at 7.30 to 9.30pm. Non-members are welcome and the entry fee is £5, if you are interested in art and want to see how it is done or if you are a budding artist come along and meet us, we are a friendly bunch. Our workshop programme is also open to non-members and held at the Liss Triangle on Saturdays from 10am to 4pm with exceptional artists. £35 if paid 6 weeks before date of workshop. £40 if paid within 6 weeks of workshop. See our website for information on programmes, www.liphookartsandcrafts.org.uk, or if you would like to try a workshop, contact Anne Cruickshank at: anncruickshankdesign@googlemail.com or telephone **01428 72526** to check if there are places available.

Demonstration evenings are held at the Millennium Centre, Liphook 7.30 - 9.30pm.

1st May	Drawing figures and capturing movement	Jenny Whalley
5th June	Pottery	Angela Carter
3rd July	Enamelling	Linda Connolly
7th Aug	Capturing Sunlight in Oils	Joel Wareing
4th Sept	Chinese Brush	Maggie Cross
2nd Oct	My life as a Micro Artist	Graham Short
6th Nov	Painting Animals Step by Step	Andrew Forkner
4th Dec	Contemporary Watercolour	Liz Baldwin

Workshops are held at the Triangle, Liss

16th June	Drawing figures and capturing movement	Dee Cowell
22nd Sept	Enamelling	Linda Connolly
20th Oct	Capturing Sunlight in Oils	Joel Wareing

Anyone interested in joining the society should contact the membership secretary; **Angie Pawlyszyn, 01428 722901, angie.pawlyszyn@btinternet.com**

We are a very welcoming group and if you have ever thought of giving art or craft a try, come to a meeting, we would be pleased to see you.

Barbara Morton

Liphook Social Club

The next folk evening will be on Friday 6th July. Our main guests for the evening are the Vanguards. They are a young, up and coming bluegrass band who have played at the club several times before. They have a strong following so book your tickets early!

Doors open at 7.00pm and the music starts around 7.30pm.

Tickets from Paul Johnson. Call:

01428 724813 or email: paul@tethersend.uk

Second Saturday
of each month



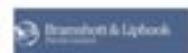
LIPHOOK
Village Market

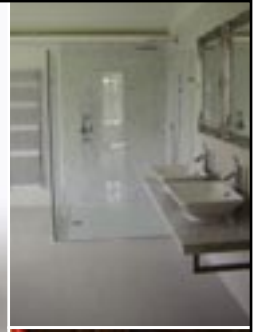
The
Millennium Centre



Come and browse the stalls in a friendly atmosphere, whilst enjoying refreshments and home baking. Stalls will include a selection of quality hand-made crafts comprising jewellery, cards, home baking, preserves, soft furnishings, children's clothes, local honey & fresh eggs

Liphook Village Market Supported by





AdamsGale Ltd

system health checks
bathrooms
wet rooms
underfloor heating
tiling

vented cylinders
landlord certification
gas / oil / lpg systems
radiator balancing
solar installation

boiler servicing
boiler replacements
electric boilers
power flushing
kitchen refurbishments

Free quotes with no obligations

01428 727895 or 01420 83308

www.adamsgale.co.uk | info@adamsgale.co.uk

The Beauti Pod

a journey to perfection

A friendly, local beauty salon, offering the very best in Client Service, Beauty, Skin Care, and Holistic Treatments.

Gel Polish • Shellac • Waxing
Manicures & Pedicures • Facials • CACI
Microdermabrasion • Massage • Spray Tans
Lash Treatments
And Many More

01428 288182
38a Station Road, Liphook, GU30 7DR
www.thebeautipod.co.uk
Free Parking



Specialising in the sale of all types of properties in Hampshire, Surrey and West Sussex.

Hamptons Liphook

10 The Square, Liphook, Hampshire GU30 7AH
Sales. 01428 768168
liphook@hamptons-int.com

www.hamptons.co.uk



Beyond your expectations

LOOK TO YOUR LESSER LINEN IN LIPHOOK

Red Kites

In the last few years a large, impressive bird of prey with a distinctive V tail has been spotted in and around Liphook. It is one of the most dramatic conservation reintroduction success stories, coming back from near extinction in this country after persecution in the late 19th and early 20th centuries to a current healthy population, and still rising in numbers.



The Red Kite (*milvus milvus*) was so well-known in Shakespeare's time that he referred to it seventeen times; it was as much a London bird – “the city of kites and crows” as he called it - as the ravens in the Tower of London, and was widespread throughout England, Wales and Scotland.

Although magnificent in appearance, the birds are scavengers, never short of a meal when people throw their rubbish in the street, and were known for stealing washing off lines for their nests; Autolycus in *A Winter's Tale*, warns “When the kite builds, look to lesser linen”. It was so well known that it gave its name to the ubiquitous children's toy, but was also considered a bird of ill-omen because of its habit of seeking out dead flesh.



As with many birds of prey, kites were persecuted in the erroneous belief they killed lambs and game birds, and they were threatened by the side-effects of pesticides. By the 1960s they had been reduced to only about a score of pairs, confined to their remote stronghold in the hill country of central Wales. An ambitious reintroduction programme between 1989 and 1994 released about 100 birds from Sweden and Spain and some from Wales. Any landscape with a combination of hills, woodland and open grassland seems to its liking and they are now breeding throughout Wales, central and southern England and in some parts of Scotland and Northern Ireland, with an estimated national population of around 2,500 pairs.



Breeding in the Chilterns commenced in 1992 and a pair nested near Overton in 1992 and one near Corhampton in 2003. In addition, the Hawk Conservancy Trust, near Andover, was behind the release in 2005 of 15 young red kites in Hampshire. The Hampshire Ornithological Society estimated there were probably in excess of 50 breeding pairs in the county in 2012 with a further 150 juveniles wandering widely.

With a wingspan of 1.8m (six feet), it is Britain's third largest bird after the white-tailed and golden eagles, and their size and habit of circling tirelessly overhead, flexed forked tail in flight and shrill, mewing “weeou-weeou-weeou” calls helps to identify them.

Rod Sharp

Poets Corner

Syria

What savagery man can do to man?
To starve a loving child
Deny it food to sustain this life
Kill the husband, maim the wife

The anguish of the parent bombed
No food for family
Just shrapnel, cordite and TNT
And mans insanity

Starving children staring eyes,
Fearing death dropped from the skies
These godless men of savagery
Where is their humanity?

No, God, condones, these, dread, filled, deeds!!!
To wound a child and let it bleed
Deny it basic food for life?
Inflicting terror, torture, strife.

This savage cycle must be ceased
Let suffering at last end
Time to plant the seeds of peace
And harvest the Amens.

Frederick Werner

Friendship

Two old Ladies, we sit down to tea,
I'm eighty four, and she's eighty three
I hate her and she hates me
But were the only ones left, you see
We meet every Wednesday at half past three
I go to her and she comes to me
I bore her and she bores me
But we've the only ones left you see

She talks of her Harry and I talk of my Fred
And of all the things they did and said
We both tell lies and never agree
But we are the only two left you see

She boasts of the party at number three
Were Fred kissed her instead of me
Nut I still wear his ring, so it's plain to see
Why I hate her and she hates me

Never trust your best friend they say
And I don't her, not to this day
But they are all gone, so pour some more tea
For were the only ones left you see.

Anon

England's High Noon

It is the month of June. In a sky with depths of blue, the sun brandishes golden light, reflecting on the sea. The water is burning in the brightness. The Solent is calm, clear, a sapphire jewel here at the land's edge.

The dust track veers left, pursues a route between scrubland and sea, down towards the shingled beach. Concrete replaces dust, a more permanent way, built seventy years ago to carry men and machines to D-Day beaches.

In a new century, I follow their footsteps, thoughts traveling back along the timefurrowed road to days in another June, when young men walked here, lived here, built here, dreaming of a better world. They have left their mark, in broken piles of stone and twisted metal tracks, flowering prettily now. Here are the flattened fields where tents were pitched and there the ragged structures jutting out to sea from which their craft were launched.

Insects sip nectar
Sea birds skim through salty air
That day and today.

My inward eye views this scene, etched in all its azure, summer beauty, seeing it as though for the last time. It is an unbearable thought. I catch my breath. And then a splash of crimson arrests attention. On a slab of stone, a spray of flowers, red poppies, poppies redolent of blood, of death, of sacrifice. The scene blurs at this memento mori, at the inscription of the names of the young men who went to fight in that fierce battle and did not return. For them, on a distant day, this jewel of coastline was their last sight of home before they journeyed on that day that marked England's high noon.

Cries of children rise
Carried clear through bright air
Joyful in freedom.

Ruth Howes

The Stolen Kiss

What could I say about it
I really do not know
It still rather irks me
Of that I am so sure
But now I think about it
The thing I know is this
I'll remember long and hard
The day he stole that kiss.

Linda Foster

CLUBS AND ORGANISATIONS IN AND AROUND LIPHOOK

- AC MEON (Sunday Football Club)** - Russell Kirk, 01428 725303.
- AGE CONCERN LIPHOOK** - Robin Young, 01428 723255.
- ALCOHOLICS ANONYMOUS** - 0800 9177 650.
- ALZHEIMERS SOCIETY** - Dementia Helpline: 0845 300 0336.
- ARTS SOCIETY GRAYSHOTT** - Caroline Young, 01428 714276.
- BADMINTON CLUB** - Morgan Thompson, 01730 817881.
- BEEKEEPERS ASSOCIATION** - Petersfield and District - Jenny Peters, 01730 821920.
- BELL RINGERS** - Bramshott - Diane Hart, 01428 723798.
- BORDON BOULE CLUB** - Mr A. Thomas, 01420 478298.
- BRAMSHOTT EDUCATIONAL TRUST** - Email: clerk.bramshott.trust@hotmail.co.uk
- BRAMSHOTT & LIPHOOK ARTS & CRAFTS SOCIETY (First Tuesday of the month 7.30pm)** - Alison Bundy, 01420 488695. Email: Yobund@yahoo.com
- BRIDGE CLUB - Liphook, Friday Evenings** - Mrs M. Paterson, 01428 723177.
- BRITISH RED CROSS** - Mrs C. Saunders, Chase Community Hospital, Conde Way, Bordon. 01428 488801.
- CANCER RESEARCH U.K.** - Shop - 20 Station Road, 01428 724664.
- CHILD WELFARE CENTRE CHILD HEALTH CLINIC** - 9.30am - 11.00am. Wednesdays. Millennium Centre. Contact: 01428 483827.
- CHILTLEY BRIDGE CLUB** - Mr C. French-Lynch, 01428 727939 or Mr Dick Roberts, 01428 722061.
- CITIZENS ADVICE BUREAU** - National Number: 03000 0231 231.
- CONFORD VILLAGE HALL TRUST** - Mrs R. Parry, 01428 751364 and Deputy - Mrs G. Woodward, 01428 751474.
- CONSERVATIVE ASSOCIATION** - Liphook Branch of N. East Hampshire Angela Glass, 01428 722375.
- COUNTRYSIDE COMPANIONS WALKING GROUP** - Mrs Harsha Patel, 01428 724747.
- CRUSE** - bereavement care. Confidential counselling and information. Tel. 0808 808 1677.
- DIABETES UK** - (Petersfield & District) - Mike Ling, 0345 123 2399 email: supportservices@diabetes.org.uk
- DOGS TRUST DOG SCHOOL HAMPSHIRE** - 01329 448243 email: hampshiredogschool@dogstrust.org.uk Web: www.dogstrustdogschoo.org.uk
- DREAMS COME TRUE** - Yvette Copping, Community Fund Raiser, 01428 726330.
- DYSTONIA SOCIETY** - Jennifer Wiseman, 01428 722516.
- FLORAL DECORATION SOCIETY** - Liphook - Wendy Evans (Sec), 01428 722212.
- FURNITURE HELPLINE** - Gerald Robinson 01420 489000.
- GUIDE DOGS FOR THE BLIND ASSOCIATION** - Pam Higgins, 01428 751572.
- HAMPSHIRE BADGER GROUP** - Mick Neeve, 01420 87366.
- HASLEMERE BORDER ATHLETIC CLUB** - Contact@hbac.co.uk or www@bac.co.uk.
- HASLEMERE CAMERA CLUB** - Clinton Blackman LRPS, 01428 727403.
- HASLEMERE DECORATIVE FINE ARTS SOCIETY (NADFAS)** - Chairman: Alison Marston, 01428 652000.
- HASLEMERE PERFORMING ARTS** - Angela Canton, 01428 652360.
- HASLEMERE SUB AQUA CLUB** - Thursdays at Herons Leisure Centre, 7.45pm for lecture, 8.45pm for pool training. Web: www.haslemeresubaquaclub.com
- HASLEMERE SWIMMING CLUB** - Helen Reynolds, admin@haslemereswimmingclub.co.uk
- HASLEMERE TOWN BAND (BRASS)** - Chairman, Maurice Wright, 01428 723940.
- HERITAGE CENTRE** - 1st Floor Millennium Centre, 01428 727275. E-mail: liphookheritage@btconnect.com
- HOCKEY CLUB** - Haslemere Ladies (Home ground at Woolmer Hill) - Pauline McBrown, 01420 477409.
- HOLLYCOMBE STEAM and WOODLAND GARDENS SOCIETY** - Mr R. Hooker, 01428 724900.
- HORTICULTURAL SOCIETY** - Bramshott and Liphook - Secretary: Ann Haussauer, 41 Chittley Way. 01428 723045 - www.liphookhortsoc.org.uk
- LABOUR PARTY** - Liphook Branch - Dr. John Tough, Horseshoes, Griggs Green. 01428 724492.
- LAMPS** - Dave Rowlandson, 01420 475195.
- LIBERAL DEMOCRATS LIPHOOK** - Mr M. A. Croucher, 01428 723834. Mrs C. Gunn, 01428 722867.
- LiDBA** - (Businessmen's Association) Sec. Ken Charles, 01428 727438.
- LIPHOOK ACADEMY OF DANCE** - Rebecca Paris, 01428 725267.
- LIPHOOK BOWLING CLUB** - Bruce Penny, 01428 722013.
- LIPHOOK CARNIVAL** - Sally Cameron, 0771 731 3440.
- LIPHOOK & RIPSLEY CRICKET CLUB** - *Secretary* - Nick Clansfield, 07789 284568. Nick.cansfield@hotmail.co.uk *Youth Co-ordinator* - Steve Saycell, 07771 788486. stevesaycell1@gmail.com
- LIPHOOK CARE** - Charity Shop, 01428 727211.
- LIPHOOK CARERS GROUP** - Enquiries: liphookcarersgroup@gmail.com
- LIPHOOK CHURCH CENTRE** - Enquiries: 01428 725390.
- LIPHOOK COMMUNITY LAUNDRY** - Irene Ellis, Chairman, 01428 723823.
- LIPHOOK DAY CENTRE FOR THE ELDERLY** - Peak centre, 01428 724947.
- LIPHOOK HISTORICAL WARGAMES GROUP** - Trevor Maroney, 01428 725193.
- LIPHOOK IN BLOOM** - Joan Holdsworth, 01428 724016 or Phil Jordan, 01428 724903.
- LIPHOOK MEDICAL AID FUND** - J.D. Meech, 01428 727617.
- LIPHOOK & DISTRICT MODEL RAILWAY CLUB** - Nick Harling, Email: idmrc-Secretary@outlook.com
- LIPHOOK MODELLERS CLUB** - Mr. E. Hobbs, 01428 683427.
- LIPHOOK OVER 60's** - Sue Knight, 01428 723502.
- LIPHOOK SOCIAL CLUB** - The Steward 01428 722711.
- LIPHOOK TABLE TENNIS** - Peter Ritchie 01428 727815.
- LIPHOOK TENNIS CLUB** - John Wichell, 01428 713618 or 01730 601490.
- LIPHOOK UNITED FOOTBALL CLUB** - 07917 131759. Youth Secretary - Neil Pirie, 01428 725754.
- LIPHOOK VILLAGE SURGERY PPG** - 01428 728270.
- LIPHOOK WOMEN'S INSTITUTE** - Secretary, Maureen Truss, 01428 723836.
- LISS IN STITCHES** - Deirdre Mitchell, 01730 267214.
- LUDSHOTT PHOTOGRAPHIC CLUB** - Diana Grant, 01428 713706.
- M.A.D. COMPANY** - (Methodist Amateur Dramatics) 07766 083862.
- MEALS ON WHEELS** - Apetito, 0808 271 6600.
- MILLENNIUM CENTRE, LIPHOOK** - 01428 723889.
- MOTOR CYCLING CLUB - Haslemere** - Mrs T.C. Reffold, 19 The Links, Whitehill, Hants GU35 9HB.
- MUSICAL SOCIETY** - Haslemere - Choir and Orchestra, Rehearsals Mondays. Sue Ecclestone, 01428 605612.
- MYASTHENIA GRAVIS ASSOCIATION** - (Hampshire Branch) - Secretary, Mrs J. Finney, 01428 776467.
- NATIONAL TRUST** - Ludshott Commons Committee - Susan Salter, 01428 751409.
- OPERA SOUTH** - Caroline Martys, 01428 64476 or 07950 646326.
- OPTIMIST BADMINTON CLUB** - Bohunt - David Lush, 01428 725166.
- PARISH CLUB AND INSTITUTE** - 4 Headley Road, Liphook, 01428 722711.
- PARISH COUNCIL** - Bramshott and Liphook - The Haskell Centre, Midhurst Road, Liphook, 01428 722988.
- PEAK CENTRE** - Booking Secretary, Ann Hall, 01428 727751.
- PETERSFIELD AREA WILDLIFE GROUP** - Mr & Mrs Oakley, 01730 2663920.
- PRESERVATION SOCIETY** - Bramshott and Liphook - 01428 722162.
- RAMBLERS** - Liphook & District - Secretary, Caroline Lemka, 01428 713727. Web: www.liphookramblers.wordpress.com
- RAPE AND SEXUAL ABUSE SUPPORT CENTRE** - 01483 546400 or Freephone 0800 0288022.
- RIVER WEY TRUST** - Adrian Bird, 01428 722162.
- ROTARY CLUB - Haslemere**, Debbie Morley, 01428 643416.
- ROYAL BRITISH LEGION** - Lt. Col. J.M. Jack, 01428 724002.
- ROYAL NAVAL ASSOCIATION - Liss & District**, 01730 895470.
- R.S.P.C.A.** - Di Fowler, 0771 303 8429.
- SSAFA/FORCES HELP** (Soldiers, Sailors & Airmans Families Association) East Hants Branch, Divisional Sec., Patricia Lyons, 01420 561264
- SELF SUFFICIENCY GROUP - East Hants**, Dru Furneaux, 01730 814193.
- STANDFORD, PASSFIELD AND HOLLYWATER COMMUNITY ASSOCIATION** - Sue Sergeant, 01428 751326. Hall Bookings, Ron Sergeant, 01428 751326.
- TAI-CHI** - Diana Forbes, 0777 569 6249.
- THE ARK PRE-SCHOOL** - Helen Jackson, 0777 539 4230 or 01428 725390.
- THREE BORDERS KNITTING CLUB** - 01428 606957, 01428 712055.
- U3A LIPHOOK** - Email: membership1@liphooku3a.org.uk
- VILLAGE HALL** - Bookings: Mrs M. Madgwick, 01428 729080.
- VOLUNTARY CARE GROUP** - Bramshott and Liphook Parish. 01428 723972.
- WOMEN'S FELLOWSHIP** - Sue Knight, 01428 723502.
- WOOLMER FOREST ARCHAEOLOGICAL and HISTORICAL SOCIETY** - 1st Wednesday of month, Colin Brash, 01428 713256.
- WOOLMER FOREST LIONS CLUB** - Ken Bassett, 01428 713285.
- WORKERS EDUCATIONAL ASSOCIATION** - Mrs S. Martin, 01428 641907.

CHILDREN'S AND YOUNG PERSONS' CLUBS AND ORGANISATIONS

ARMY CADET FORCE - No. 6 Platoon, 'A' Company, 1st Battalion
Hants & I.O.W. ACF - Detachment Commander: Staff Sergeant
A. Steven, 07796 268095, Parade Night: Tuesday at Wolfe House,
Bordon, 7-9.30 p.m.

BALLET & JAZZ DANCE CLASSES - from 2½ years at Liphook
Church Centre, Hindhead & Haslemere, Angela Canton, 652360.

CHILDREN'S CHILD HEALTH CLUB - Millennium Centre,
9.30-11.00am, 01420 483827.

CHILD MINDER GROUP - Mon. a.m. at The Village Hall,
Jeanett Kirby, 01428 729404.

DANCE & DRAMA CLASSES - Ballet, Tap, Modern Jazz Dance etc., from
2½ years at Headley Village Hall, Grayshott Village Hall and Pinewood
Village Hall, Bordon. Contact Hilary Bishop AISTD on 01428 605290.

FERNHURST CENTRE IT COURSES & INTERNET CAFE -
2, Crossfield, Vann Road, Fernhurst, GU27 3JL. 01428 641931.

HASLEMERE BAND (BRASS) - Graham Ingram, 01252 33828.

INFANT SCHOOL

PTA - Lisfa@Liphook-infants.sch.uk

JUDO CLUB - Mr M. Poke, Bohunt Centre, 01428 724324.

LIPHOOK AND RIPSLEY YOUTH MEMBERSHIP - Steve Saycel,
0777 178 8486 or Lrccyouthcricket@gmail.com

LIPHOOK CRUSADERS GROUP - for 4-14 year olds Friday evenings
Church Centre. Contact Church Centre Office, 01428 725390.

LIPHOOK JUNIOR SCHOOL P.T.A. - foljs@liphook-jun.hants.sch.uk

LIPHOOK PARENT AND TODDLER GROUP - Friday am. - Mrs Janet
Stovold, 01428 722333.

LIPHOOK THEATRE CLUB - For 5 - 11 year olds, 01428 722813.

LIPHOOK UNITED FOOTBALL CLUB - Chairman, Nigel Marr,
01428 727661, Secretary, Martin Feast, 01428 722677.

LIPHOOK YOUTH CLUB - John Tough, 01428 724492.

LITTLE BADGERS PRE-SCHOOL 2-4+ - Sports Pavilion, Headley.
01428 714827.

LITTLE CHERUBS NURSERY - Mrs M. Powers, Liphook. 01428 723438.

LITTLE LAMBS - Tuesday 9.45 - 11.45a.m., Contact Church Centre
Office, 01428 725390.

MADHATTER NURSERY BOHUNT SCHOOL - 01428 727288.

MATRIX MAJORETTES - Mrs Julie East, 01420 487804.

METHODIST YOUTH - Mrs Sharon Tikaram, 01428 723801.

PETERSFIELD YOUNG FARMERS CLUB - 8-10pm
Suzy Goring, 01420 488325.

RED BALLOON NURSERY - Hammer, Mrs Susan Lovelock, Magnolia
House, Churt Road, Hindhead. 01428 607499.

ROCK CHILDREN'S CHARITY - Robin Oliver, 01428 722734.

STAGECOACH THEATRE ART - 4-16 yrs. Drama, Dance & Singing,
0845 055 6376.

ST JOHN AMBULANCE & NURSING CADET DIVISION - Liphook
Member in charge, John Tough, 01428 724492. Millennium Hall
every Wednesday. Cadets 6.30 - 8.00pm. Adults 8.00 - 10.00pm.

SWIMMING CLUB - admin@haslemereswimmingclub.co.uk

THE ROYAL SCHOOL NURSERY - Portsmouth Road, Hindhead.
01428 604096.

TIDDLERS LIPHOOK INFANTS SCHOOL - Community Room,
Mondays 9.30-11.00am, 01428 725746.

TRAINING BAND - Maurice Wright, 01428 723940.

WEYHILL MONTESSORI NURSERY SCHOOL - Scout H.Q. Wey Hill,
Michele Dows-Miller, 01374 936960 or 01420 472282.

GUIDES

To join Girlguiding Liphook as a Volunteer or to register your daughter's interest, please complete the online form by visiting www.girlguiding.org.uk and clicking the 'Parents' link or 'Get involved'. You will then be contacted by a unit leader.

Rainbows 5 - 7 Years: 1st Liphook - Tuesday. 2nd Liphook - Thursday.

Brownies 7 - 10 Years: 2nd Liphook - Monday. 4th Liphook - Thursday.
5th Liphook - Tuesday

Guides 10 - 14 years: 1st Liphook - Wednesday. 2nd Liphook - Monday.

Rangers 14 - 25 years: 1st Liphook - Thursday.

Trefoil Guild - Adults only: 4th Tuesday of each month.

Contact Barbara Ellis via liphook-guides@outlook.com

Girlguiding Liphook District Commissioner: Rachel Topping, to
contact use liphook-guides@outlook.com

SCOUTS

1st LIPHOOK SCOUT GROUP - Scouting offers young people, aged between 6 and 25, a fantastic range of fun, exciting, challenging and adventurous activities and in Liphook we have one of the largest and most active Scout Groups in Hampshire. 1st Liphook Scout Group has nearly 200 members and runs 2 Beaver Colonies (for those aged 6-8), 3 Cub Packs (8-11), 2 Scout Troops (11-14), an Explorer Scout Unit (14-18) and has strong links to our District Network Scout Unit (18-25).

If you live in Liphook or the surrounding villages and you would like your son or daughter to experience the everyday adventure of Scouting, then please contact our Membership Secretary, Clare Smith, at membership@liphookscouts.org.uk to find out more about joining.

If you have any other questions about Scouting or our Group, then please contact:

- Bryan Jackson (Group Scout Leader) on 01428 723248 or by email at bryan.jackson@btinternet.com for all enquiries about Scouting and our sections;

- Kevin Stephenson (Group Chairman) on 01428 724186 or by email at kevin.stephenson@btopenworld.com for all volunteer or fundraising enquiries;

- Mark Tellyn (Group Secretary) on 01428 741509 or by email at info@liphookscouts.org.uk for all general or subs enquiries;

- Alison Jackson (Scout Shop) on 01428 723248 or by email at alisonjackson@btopenworld.com for all uniform or equipment enquiries.

If you are already a member of the Group or the parent of a member, then if you have a question about your section, then please contact the relevant Section Leader:

- Willow Beavers Colony (Monday) - Mark Boosey on 07949 408093;
- Ashdown Beavers Colony (Tuesday) - Mark Stocker on 07976 845670;
- Downlands Cub Pack (Tuesday) - Kevin Carrig on 01428 727063;
- Oakhanger Cub Pack (Thursday) - Trevor Holden on 01428 722810;
- Wheatsheaf Cub Pack (Friday) - Jazz Turner on 01428 751926;
- Shackleton Scout Troop (Wednesday) - Nigel Woods on 01730 261072;
- Scott Scout Troop (Friday) - Sheila Woods on 01730 261072;
- Stirling Explorer Scout Unit (Monday) - Stuart West on 01420 474573;
- Thesiger Network Scout Unit (Wednesday) - Mark Boosey on 07949 408093.

*Any changes please notify Hazel
Williams on 01428 722084*

Report to the Liphook Community Magazine

East Hampshire District Council continues with its policy to ensure that the District Council, through its Invest for Growth strategy, becomes fully independent of Central Government funding, which is about to stop.

A Local example of this is the development of the former OSU site, adjacent to The Beaver Industrial estate, into two office buildings, together with three light industrial units, which offer further employment and business opportunities within Liphook. Liphook will expand in the future with more housing, but it is important to retain employment land, so that there are local jobs available.

In Whitehill and Bordon, where building continues apace, the new Leisure Centre, with six lane swimming pool, was recently given planning permission. This is situated within the new Town Centre, where, in addition to shops, offices and housing, a new school will be completed by September 2019, to replace Mill Chase Academy.

Cllr. Ferris Cowper, former Leader of EHDC, has been active in the encouragement and pursuit of new business for Whitehill and Bordon, and the announcement has been made, that IBM will be locating to the new Town.

In addition to the new Leisure Centre at Whitehill and Bordon, EHDC is also building a new replacement leisure Centre in Alton, and undertaking a major refurbishment of the Taro Centre in Petersfield.

The new Relief Road is scheduled to be finished in the summer, while work has started, and houses completed and occupied, in the former Louisberg Barracks area, and two adjacent sites. In addition, the former Quebec Barracks site, built out by Radian, with a mix of 100 affordable, starter and market homes, is fully sold, with the exception of four properties. The new 1759 Café was recently opened by Damian Hinds. This café has been built between the former Chieftain and Centurion buildings, and links the two together.

EHDC was pleased to be able to freeze Council Tax for 2018/2019, following two former years of cutting the Council Tax. It has also been able to retain all its frontline services for residents. It was the only District Council across the country which was able to do this.

Grants

Your District Councillors have been very pleased to support numerous different projects, clubs, associations, and St. Mary's Church, over the past year. With £4,500 available to each District Councillor, it enables us to offer the community the opportunity to complete projects and aspirations, with up to £1,000 available for each applicant. The Grants for 2017/2018 have now closed. However, we are now in May, and the new grant year commences, and we look forward to being able to help more clubs, projects and associations again, over the next twelve months.

I was particularly pleased to be able to help funding towards the new Memorial Book, and display stand, which will contain the names of all those on the War Memorial, and others whose names do not appear on it. There will be space to be able to add more names in the book, in the future. This year is of course the 100th Anniversary of the end of World War I, so it is apt that this Memorial book will be dedicated this year, and kept in St. Mary's Church, for all to see.

Cllr. Bill Moulard was pleased to be able to give a large grant towards the new blue running track at Liphook Federation Schools' sports field. This is designed to encourage the children to "run a mile" every day. The Right Hon. Damian Hinds MP, Secretary of State for Education, cut the tape to officially open the track on Friday 28th April, and children from both the Infant and Junior schools ran many laps of the track.

Last year we each spent our total grant money which meant that £13,500 was distributed throughout Bramshott and Liphook and surrounding villages.

Review of Local Plan

EHDC is now embarking on a review of its Local Plan, in accordance with latest Government requirements, which deem a plan to be out of date after five years. As the present Local Plan was adopted in 2014, it will be out of date in April 2019.

Whereas the previous plan period was from 2011 to 2028, the new Plan period will take us up to 2036. At present there is a call for sites, ending on 4th May, which covers not only sites for all types of development, but also for Suitable Alternative Natural Green Spaces, or SANGS as they are known, as well as sites for Gypsies, Travellers and Travelling Showpeople.

It is hoped that the Local Plan review will take approximately two years to complete.

We will also liaise closely with the Neighbourhood Development Plan Steering Group, during this time, and thank them for all their hard work in the continuing preparation of the Neighbourhood Plan.

Sports Awards

EHDC was pleased to entertain many school and community teams and individual sports men, women and children, at Old Thorns, for the annual Sports Awards.

The event was compered by Roger Black, who presented the awards, and who was able to offer his encouragement to all those who attended.

We look forward to many more nominations for next year's awards, from the talented schools and clubs in Liphook and the district.

Sport enhances all aspects of life, and we were reminded of the great achievement of former Bohunt pupil, Olivia Breen, who gained a gold medal at the 2012 Olympics, and has just gained another gold medal at the Commonwealth Games, in Australia, competing as a Paralympian.

Boundary Commission Review

The long awaited results of the Boundary Commission Review have been published, and we are pleased that Bramshott and Liphook remain un-warded with three District Councillors representing the whole area. We believe that we can represent all areas of the Villages, without being restricted to one particular Ward each, within the parish.

Some areas of the District are not so happy with the results of the Review, which has sought to reduce the number of District Councillors from 44 to 43 across the District.

Finally, at the end of another very busy year, I would like to thank Cllr. Floss Mitchell, our County Councillor, for all that she does on behalf of Bramshott and Liphook, and also Cllr. Jane Ives and the Parish Council for the hard work which they undertake on behalf of the Parish. Your three District Councillors strive to assist all our residents throughout the year. We thank all those who have, in turn, supported us, which is very much appreciated.

Contact e-mails:

Cllr. Angela Glass: angela.glass@easthants.gov.uk

Cllr. Rebecca Standish: rebecca.standish@easthants.gov.uk

Cllr. Bill Moulard: bill.moulard@easthants.gov.uk

TRI-HIGH

Tri-High members, adults and kids have had a productive winter of training and racing (cross country) and at the time of writing it is very exciting to report that the 2018 season is well and truly upon us and not just because the weather has improved. However, mud was still on the agenda when some of the junior members competed in the 'mud kids' event in Dorking. Before long we hope to have members competing in numerous multisport events locally, regionally, nationally and overseas.

Talking about overseas, two of our adult members, Barnaby Gray and Aubrey Malcolm-Green (both ex Highfield School teachers), departed on Tuesday 24th April and competed in the North American Ironman Championships which took place in Houston at the end of April. They will both follow this up with the Switzerland Ironman in July and then Ironman Wales in September.

Junior Section Report:

Tri-High has gone from strength to strength with some fantastic achievements held by our Junior members. With careful and progressive coaching planned across the year by Head Coach James Woodhouse, we are proud to have many members win and regularly achieve top 10 placings at every outing. A notable achievement was Ethan Gubby winning the Castle Triathlon Series Junior Championship. With races across the UK, Ireland and France; this is no mean feat and well deserved. Huge congratulations should also go to Trinity Clement, Henry Plewes and Yasmin Gubby for continual high-level race performances.

Tri-High welcomes children of all abilities and Sunday training at Highfield School sees all children working together across all three disciplines of swim, bike and run. Throughout the winter, we use the time to our advantage and develop our skill, technique and endurance but all through a healthy blend of fun and games. By working together, Tri-High has established itself as a team effort. A club that is genuinely supportive of every member and uses every training session and race, regardless of the result, as a learning opportunity. It is wonderful to see our children smile through tough training sessions and demonstrate that together, we can achieve.

Over the winter period, our children have enjoyed the Lord Wandsworth Cross Country Race Series, Brutal 10 races and many school based cross-country races and training. We enjoy seeing our member's race for us but also for their schools. Using key skills learnt with us, they have begun to pass on this knowledge to friends, which is a pleasure to see. Newer members have worked hard with our sessions, some of which have been quite challenging! Needless to say, they are certainly ready for the summer ahead.

As the race season is now upon us, all of the coaches at Tri-High are excited to see what the season holds! Will we be able to keep our leading record? Who will race for the first ever time? Whatever the result, we are so proud of the effort that the children put into every training session and congratulate them for this!

Anyone interested in joining the club or learning more about what is on offer please email Barnaby Gray at:

barnaby.gray@tri-high.com

